

15 - 25 TONS PACKAGED AIR CONDITIONERS

15 TONS COOLING CAPACITY: 180,000 BTU/H

20 TONS COOLING CAPACITY: 240,000 BTU/H

25 TONS COOLING CAPACITY: 290,000 BTU/H

SUBMITTAL DATA FORM

Job Name _____

Location _____

Purchaser _____

Order No. _____

Engineer _____

Unit No. _____

Model No. _____

Unit Designation _____

Performance Data Certified By: _____

■ Standard Features

- High-efficiency scroll compressor
- Copper tube / aluminum fin coils
- Aluminum micro-channel indoor coil on 25-ton units
- 25-ton models contain two outdoor fans
- High- and low-pressure switches
- High-capacity, steel-cased filter drier
- Heater kits with single-point entry
- Crankcase heaters
- 24-volt terminal strip
- Power block for field wiring
- Units meet the performance outlined in Table 6.8.1-1 of ASHRAE standard 90.1-2013
- AHRI Certified; ETL Listed

■ Cabinet Features

- Heavy-gauge, galvanized-steel cabinet with UV-resistant powder-paint finish
- Built-in filter rack with standard 2" filters (convertible to 4" filters)
- Full perimeter rail
- Sloped drain pan



* Complete warranty details available from your local dealer or at www.daikincomfort.com.

PERFORMANCE DATA

| Cooling Performance | | |
|---|-------|------------|
| Tota Capacity | _____ | MBH |
| Sensible Capacity | _____ | MBH |
| Outdoor Design TMP | _____ | °F DB / WB |
| Air Temp entering | | |
| Evaporator Coil | _____ | °F |
| Power Input Required (less blower motor) | _____ | kW |

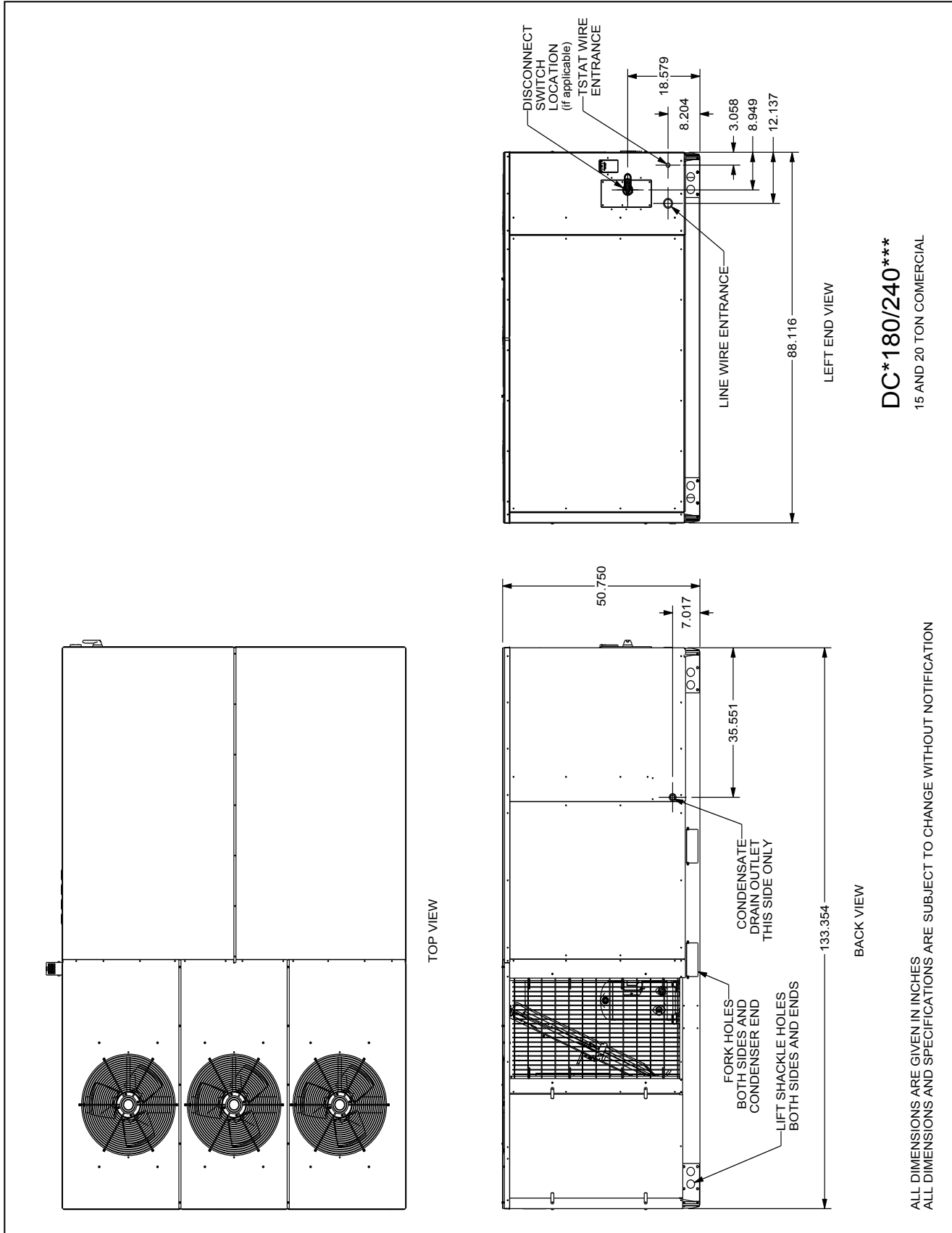
| Heating Performance | | |
|------------------------|-------|-------|
| Total Heating Capacity | _____ | kW |
| | _____ | BTU/h |

| Supply Air Blower Performance | | |
|-------------------------------|-------|-----|
| Total Supply Air | _____ | CFM |
| Ext. Static Pressure | _____ | IWG |
| Blower Speed | _____ | RPM |
| Power Output Required | _____ | BHP |
| Motor Ratings | _____ | HP |
| Power Input Required | _____ | kW |

| Electrical Data | | |
|--------------------------------|-------|--------------------------|
| Power Supply | _____ | |
| Total Unit Amps | _____ | Amps |
| Max Overcurrent Device: | | |
| Fuse | _____ | Breaker _____ Amps _____ |

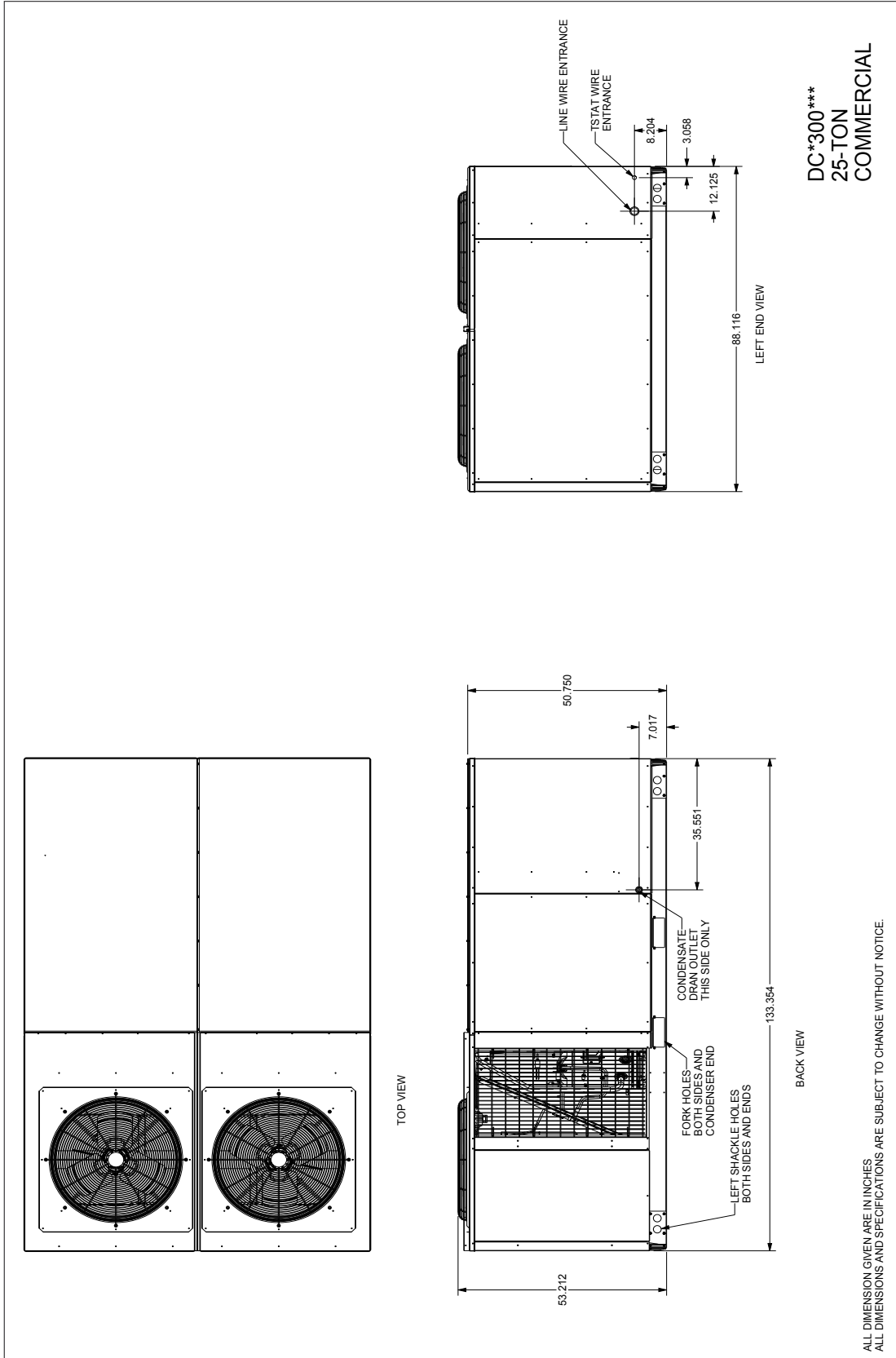
NOTES

DIMENSIONS — 15 & 20 TONS



ALL DIMENSIONS ARE GIVEN IN INCHES
ALL DIMENSIONS AND SPECIFICATIONS ARE SUBJECT TO CHANGE WITHOUT NOTIFICATION

DIMENSIONS — 25 TONS



ACCESSORIES LIST

| DAIKIN MASTER ITEM # | DESCRIPTION | FITS MODEL SIZES | FIELD- INSTALLED | FACTORY- INSTALLED | √ |
|--|---|---------------------|---------------------|-----------------------|---|
| Curb | | | | | |
| 14CURB180300 | 14" Roof Curb | 15-25 tons | √ | | |
| 18CURB180300 | 18" Roof Curb | 15-25 tons | √ | | |
| 24CURB180300 | 24" Roof Curb | 15-25 tons | √ | | |
| GHRC-180300 | Hurricane Restraint Clips | 15-25 tons | √ | | |
| Ultra Low-Leak Economizer & Power Exhaust¹ | | | | | |
| 10-365-11C | Ultra Low-Leak Downflow Economizer w/ Dry Bulb | 15-25 tons | √ | | |
| 10-366-11C | Ultra Low-Leak Downflow Economizer w/ Enthalpy | 15-25 tons | √ | √ | |
| 10-455-11-23 | Centrifugal Power Exhaust 230v | 15-25 tons | √ | | |
| 10-455-11-33 | Centrifugal Power Exhaust 460v | 15-25 tons | √ | | |
| 10-455-11-43 | Centrifugal Power Exhaust 575v | 15-25 tons | √ | | |
| 10-457-11xA-23 | Modulating Power Exhaust 230v | 15-25 tons | √ | | |
| 10-457-11xA-33 | Modulating Power Exhaust 460v | 15-25 tons | √ | | |
| 10-465-11-21 | Prop Power Exhaust 230v | 15-25 tons | √ | | |
| 10-465-11-31 | Prop Power Exhaust 460v | 15-25 tons | √ | | |
| 10-465-11-41 | Prop Power Exhaust 575v | 15-25 tons | √ | | |
| Low-Leak Economizer & Power Exhaust² | | | | | |
| DDNECNJ180300B | Low-Leak Downflow Economizer | 15-25 tons | √ | √ | |
| DPE1803002 | Downflow Power Exhaust (208/230v) | 15-25 tons | √ | | |
| DPE1803004 | Downflow Power Exhaust (460v) | 15-25 tons | √ | | |
| DPE1803007 | Downflow Power Exhaust (575v) | 15-25 tons | √ | | |
| DHZECNJ180300 | Horizontal Economizer | 15-25 tons | √ | | |
| Downflow Accessories | | | | | |
| D25FD180300 | 25% Manual Fresh Air Damper | 15-25 tons | √ | | |
| D25MFD180300 | 25% Motorized Fresh Air Damper | 15-25 tons | √ | | |
| D50MFD180300 | 50% Motorized Fresh Air Damper | 15-25 tons | √ | | |
| DDNBB180300 | Burglar Bar Sleeves with Supply and Return | 15-25 tons | √ | | |
| Horizontal Accessories | | | | | |
| HZCURB180300EDR | Horizontal Curb End Discharge Roofed In | 15-25 tons | √ | | |
| HZCURB180300NSR | Horizontal Curb Non-Service Side Discharge Roofed In | 15-25 tons | √ | | |
| HZCURB180300SSR | Horizontal Curb Service Side Discharge Roofed In | 15-25 tons | √ | | |
| HZCURB180300EDS | Horizontal Curb End Discharge Slab Mount | 15-25 tons | √ | | |
| HZCURB180300NSS | Horizontal Curb Non-Service Side Discharge Slab Mount | 15-25 tons | √ | | |
| HZCURB180300SSS | Horizontal Curb Service Side Discharge Slab Mount | 15-25 tons | √ | | |
| DHZE25FD180300 | Horizontal Fresh Air Damper 25% | 15-25 tons | √ | | |
| DHZRETPNL180300 | Horizontal Return Panel | 15-25 tons | √ | | |
| Concentrics | | | | | |
| CDK180 | Concentric Duct Kit | 15 tons | √ | | |
| CDK240 | Concentric Duct Kit | 20 tons | √ | | |
| CDK300 | Concentric Duct Kit Flush Mount Diffuser | 25 tons | √ | | |
| 3 phase 208-230V Electric Heat Kits | | | | | |
| EHK3-31 | 30kw 208-230v 3ph Electric Heat Kit | 15-25 tons | √ | √ | |
| EHK3-46 | 40kw 208-230v 3ph Electric Heat Kit | 15-25 tons | √ | √ | |
| EHK3-60 | 60kw 208-230v 3ph Electric Heat Kit | 15-25 tons | √ | √ | |
| EHK3-75 | 75kw 208-230v 3ph Electric Heat Kit | 20 - 25 tons | √ | √ | |

ACCESSORIES LIST (CONT.)

| DAIKIN MASTER ITEM # | DESCRIPTION | FITS MODEL SIZES | FIELD- INSTALLED | FACTORY- INSTALLED | √ |
|--|--|---------------------|---------------------|-----------------------|---|
| 3 phase 460V Electric Heat Kits | | | | | |
| EHK4-31 | 30kw 460v 3ph Electric Heat Kit | 15-25 tons | √ | √ | |
| EHK4-46 | 40kw 460v 3ph Electric Heat Kit | 15-25 tons | √ | √ | |
| EHK4-60 | 60kw 460v 3ph Electric Heat Kit | 15-25 tons | √ | √ | |
| EHK4-75 | 75kw 460v 3ph Electric Heat Kit | 20 - 25 tons | √ | √ | |
| 3 phase 575V Electric Heat Kits | | | | | |
| EHK7-31 | 30kw 575v 3ph Electric Heat Kit | 15-25 tons | √ | √ | |
| EHK7-46 | 40kw 575v 3ph Electric Heat Kit | 15-25 tons | √ | √ | |
| EHK7-60 | 60kw 575v 3ph Electric Heat Kit | 15-25 tons | √ | √ | |
| EHK7-75 | 75kw 575v 3ph Electric Heat Kit | 20 - 25 tons | √ | √ | |
| DDC Accessories³ | | | | | |
| | DDC communicating controller (built-in BACnet® MS/TP) includes Standard Room Sensor to be installed in field | 15-25 tons | | √ | |
| 10366D11B | DDC Ultra Low-Leak Downflow Economizer | 15-25 tons | √ | √ | |
| 10465DDC | Power Exhaust kit used with DDC Ultra Low-Leak Economizer | 15-25 tons | √ | | |
| DLAKT03 | Low-Ambient | 15-20 tons | √ | √ | |
| LONKT01 | LonWorks® card | 15-25 tons | √ | | |
| 3PMK01 | Phase Monitor (3-Phase Only) | 15-25 tons | √ | √ | |
| DFSKT02 | Dirty Filter Switch | 15-25 tons | √ | | |
| High-Static Kits⁴ | | | | | |
| HSKT180G | High-Static Kit (230/460v) | 15 tons | √ | √ | |
| HSKT180G-7 | High-Static Kit (575v) | 15 tons | √ | √ | |
| HSKT240 | High-Static Kit (230/460v) | 20 tons | √ | √ | |
| HSKT240-7 | High-Static Kit (575v) | 20 tons | √ | √ | |
| HSKT300G | High-Static Kit (all voltages) | 25 tons | √ | √ | |
| Crankcase Heater Kits | | | | | |
| 0130L00017S | 70W 230V | 15-20 tons | √ | | |
| 0130L00018S | 70W 460V | 15-20 tons | √ | | |
| 0130L00019S | 70W 575V | 15-20 tons | √ | | |
| 0130L00020S | 90W 230V | 25 tons | √ | | |
| 0130L00021S | 90W 460V | 25 tons | √ | | |
| 0130L00022S | 90W 575V | 25 tons | √ | | |
| High Efficiency Filters | | | | | |
| 0160L00202 | High Efficiency MERV 13 Air Filter Nom. Size: 20x25x2; (Order Qty 6) | 15, 20 tons | √ | | |
| 0160L00201 | High Efficiency MERV 13 Air Filter Nom. Size: 20x20x2; (Order Qty 8) | 25 tons | √ | | |
| Misc Accessories | | | | | |
| | Convenience Outlet: Powered | 15-25 tons | | √ | |
| | Convenience Outlet: Non Powered | 15-25 tons | | √ | |
| | Disconnect Switch (non-fused) | 15-25 tons | | √ | |
| LAKT23 | Low-Ambient Kit, 208-230V - non-DDC | 15-20 tons | √ | √ | |
| LAKT24 | Low-Ambient Kit, 460V - non-DDC | 15-20 tons | √ | √ | |
| LAKT25 | Low-Ambient Kit, 575V - non-DDC | 15-20 tons | √ | √ | |

| DAIKIN MASTER ITEM # | DESCRIPTION | FITS MODEL SIZES | FIELD- INSTALLED | FACTORY- INSTALLED | √ |
|-------------------------|---|---------------------|---------------------|-----------------------|---|
| LAKT05 | Low-Ambient Kit (all voltages) - non-DDC | 25 tons | √ | √ | |
| 3PMNDK01 | Phase Monitor - Non DDC | 15-25 tons | √ | √ | |
| | Smoke Detector (supply and/or return air) | 15-25 tons | | √ | |
| | Hinged Panels | 15-25 tons | | √ | |
| FSKT02A | Freeze Stat Kit ⁵ | 25 tons | √ | | |

¹ Use Economizer & Power Exhaust listed within Ultra Low-Leak section

² Use Economizer & Power Exhaust listed within Low-Leak section

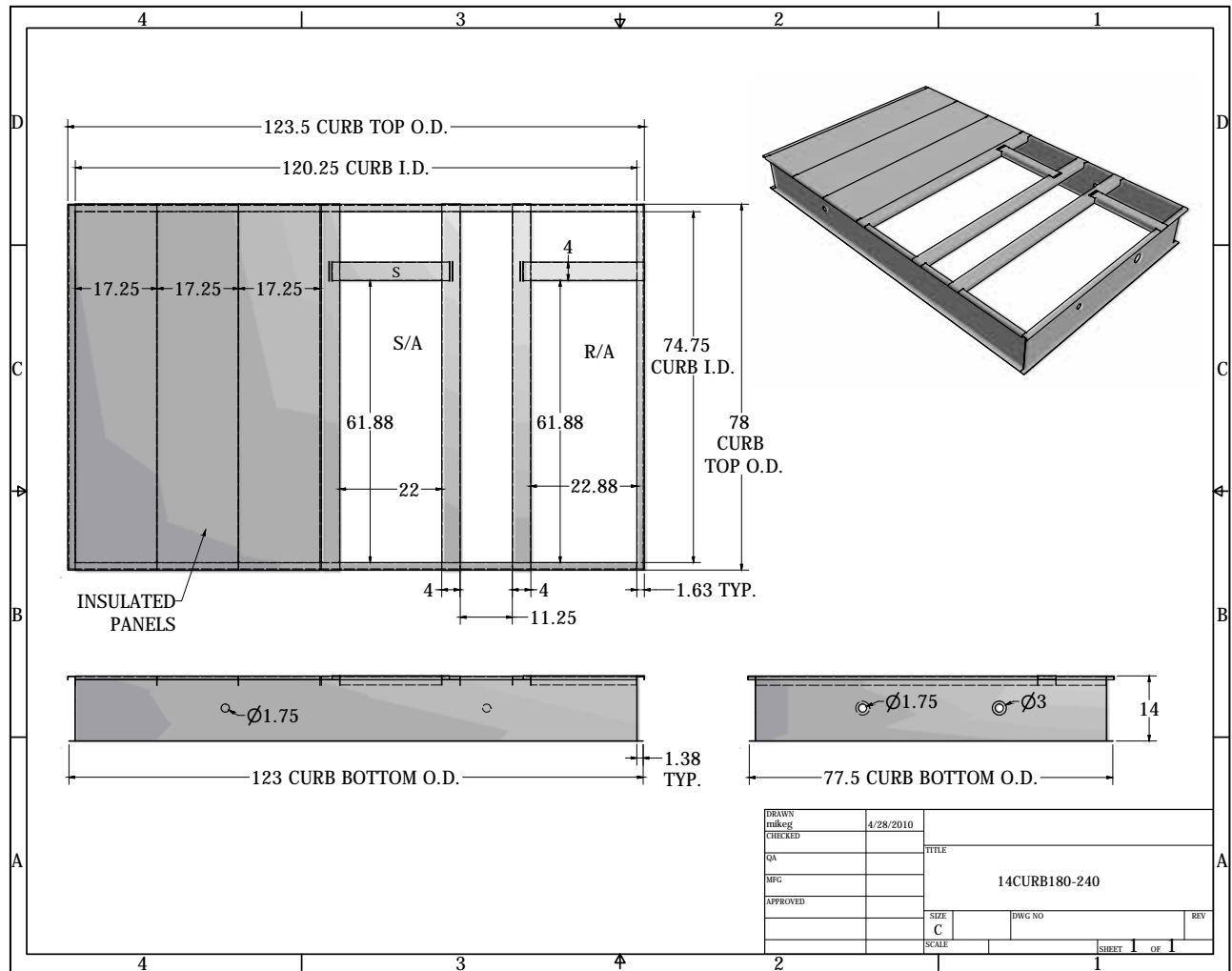
³ For a full list of DDC accessories, please refer to DDC Controller Technical Guide manual (DK-DDC-TGD-01B)

⁴ HSKT High-Static Kits are for use with standard single-speed belt-drive units only.

⁵ FSK02A is standard on 2 speed, V, models, and field installed for single speed, B, models.

Note: Where multiple variations are available, the heaviest combination is listed.

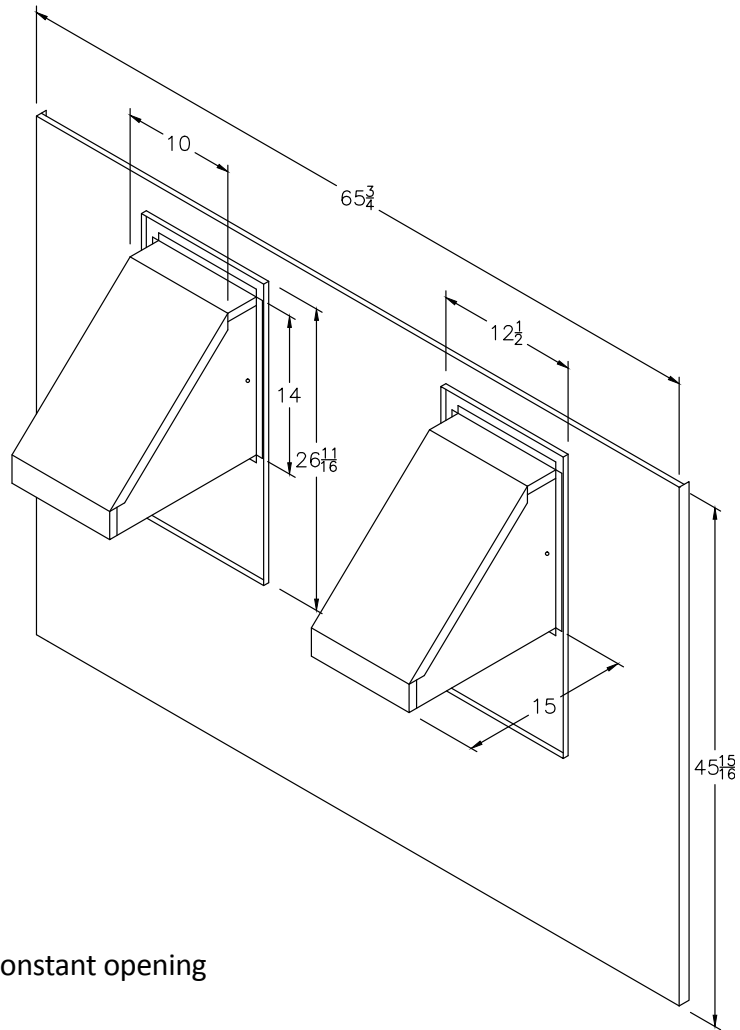
ROOF CURB — #14CRB180300



SPECIFICATIONS

- 14-Gauge construction
- 1 x 4 Wood Nailer attached to top of the curb
- Shipped knocked down with all hardware
- Gasket included
- Bed-Rail style corners

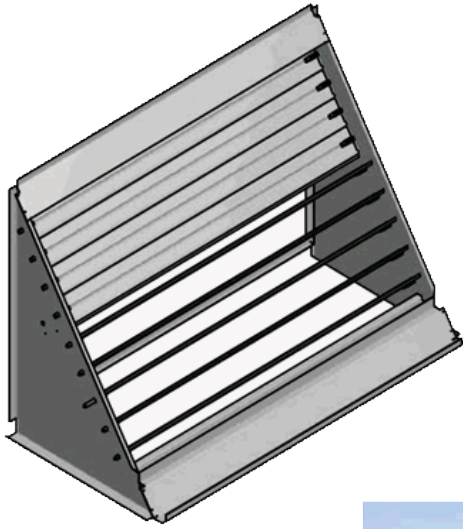
Note: outside duct dimension should be ½" less than opening dimensions above.

MANUAL FRESH AIR DAMPER — #D25FD180300**MOTORIZED FRESH AIR DAMPER — #D25MFD180300****SPECIFICATIONS****MANUAL DAMPER**

- Provides up to 25% fresh air
- Locking selection knob provides constant opening
- Painted to match the unit
- Fits 15 - 25 ton package units in all fuels

MOTORIZED DAMPER

- 24 VAC Damper motor with spring return
- Fully assembled and factory wired
- Painted to match the unit
- Fits 15 - 25 ton package units in all fuels

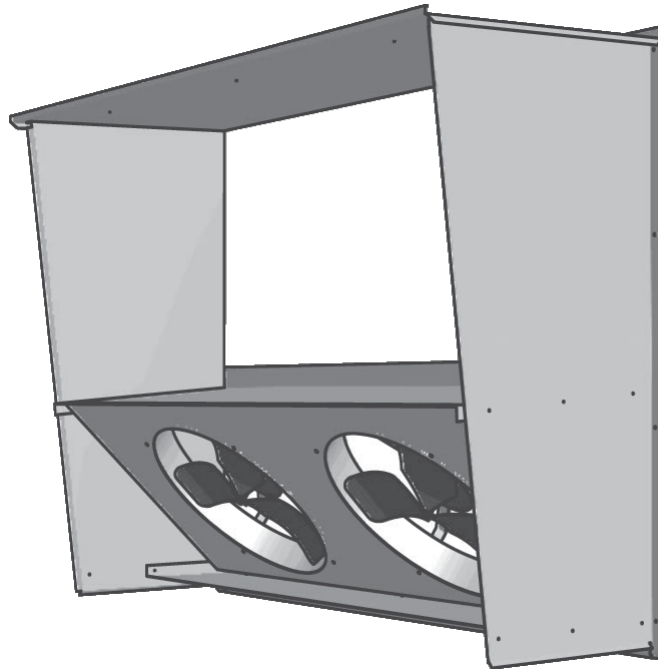
DOWNFLOW ECONOMIZER — #DDNECNJ180300B**SPECIFICATIONS**

- Fully modulating
- Up to 100% fresh air
- Integral barometric relief
- Hoods painted to match unit
- Honeywell economizer control
- Single adjustable enthalpy control convertible to dual enthalpy
- Adjustable minimum fresh air
- Factory wired
- Gas/Electric for 15 - 25 ton units

POWER EXHAUST FOR 208/230V UNITS — #DPE1803002

POWER EXHAUST FOR 460V UNITS — #DPE1803004

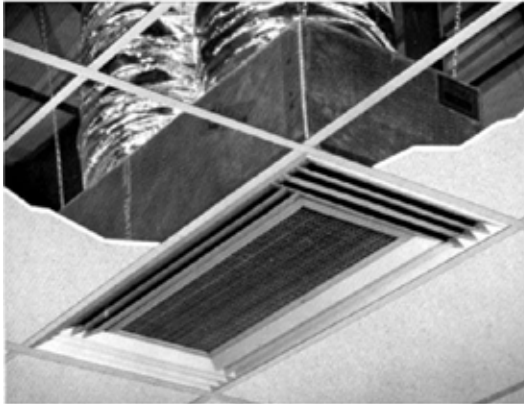
POWER EXHAUST FOR 575V UNITS - #DPE1803007



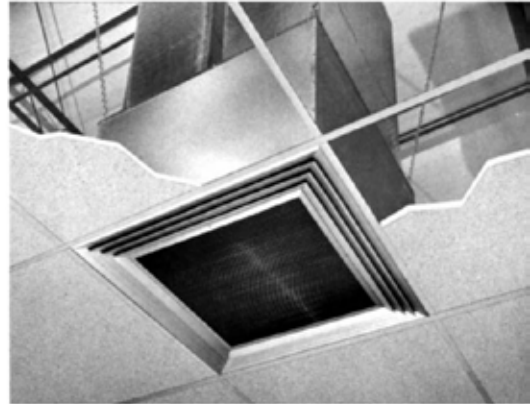
SPECIFICATIONS

- Features propeller-type fans
- 208/230V and 460V models available
- Used in conjunction with DNECONHP150 or DNECONGS180240
- Fans engage when economizer fresh-air dampers are 70% open
- Gives up to 100% relief
- Integrates into downflow economizer hood

CONCENTRIC DUCT KITS — #CDK180, #CDK240, & #CDK300



Light Commercial
T-Bar Ceiling



Commercial
T-Bar Ceiling

SPECIFICATIONS

- All-aluminum diffuser with aluminum return air egg crate
- Built-in anti-sweat gasket
- Molded fiberglass transition (through five tons)
- Built-in hanging supports
- Diffuser box constructed of fiberglass duct board (through 7½ tons) or sheet metal

