



FIRST CO.  
P.O. BOX 270969 - DALLAS, TEXAS 75227  
PH. (214) 388-5751 | FAX (214) 388-2255  
WWW.FIRSTCO.COM

# HXX Series

## HXX Series

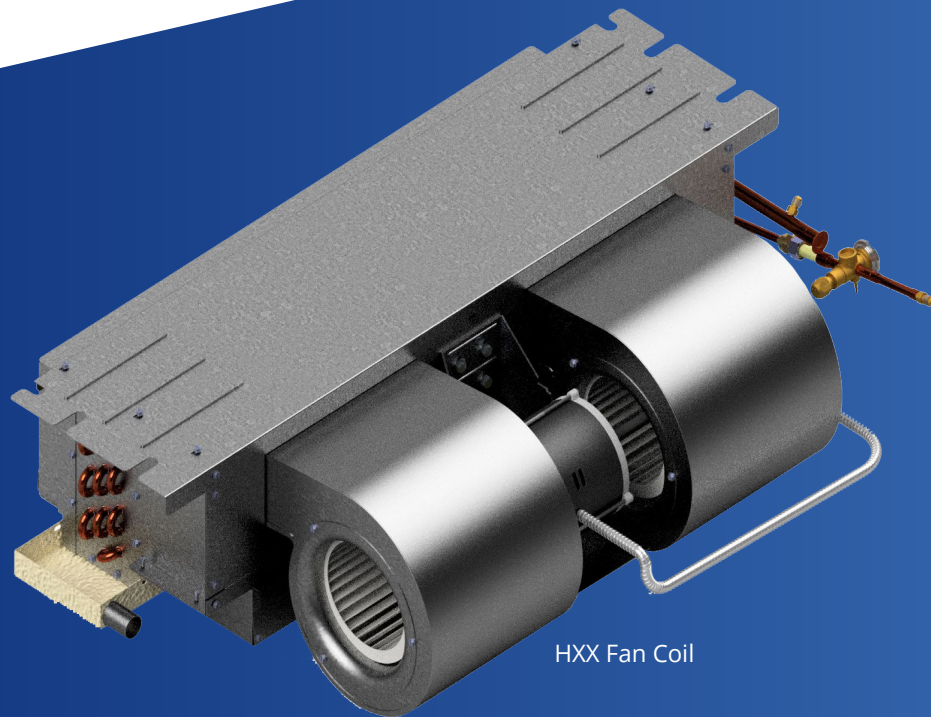
Horizontal Recessed

Ceiling Fan Coil

Cased and uncased models available

1.0 - 3.0 Tons Cooling or Heat Pump

0 - 10 kW Electric Heat



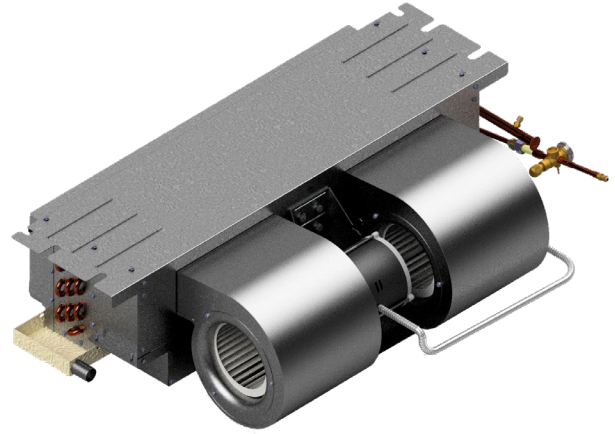
HXX Fan Coil



*These recessed ceiling fan coils are designed for use with today's higher efficiency split-system condensing units and heat pumps.*  
**High efficiency ECM type motors are standard in all HXX series fan coils.**

# HXX Series

The base **HXX** fan coil is an open blower type (non-enclosed) fan coil. It is also available with either a field or factory installed enclosure, with both options of either a louvered or solid ceiling panel. For HXX fan coils factory installed within an enclosure, add “-C” after the kW in the model number.



**HXX Fan Coil**

For instance, ordering model **19HXX5-C R410 TXV**, will include an **19HXX5 R410 TXV** fan coil factory installed in a number **9EHX01** enclosure and available in either a solid or louvered panel sold separately. (see “Enclosures with Ceiling Panels” on P. 3). A “cap kit” is also available when the **HXX** is installed above a ceiling, rather than recessed (see P. 4).

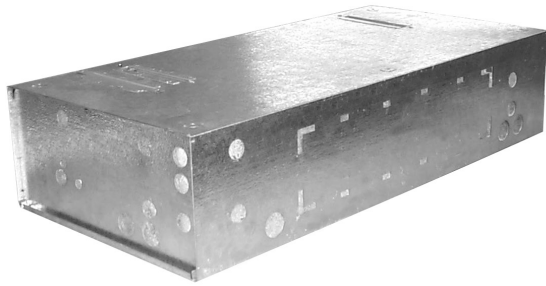


**Optional Access Panel**  
(non-louvered shown)  
(see P. 3 for information)

Compatible outdoor units: First Co's customer is ultimately responsible for confirming which fan coil models are compatible with selected outdoor units. To determine certified indoor/outdoor matches, go to [www.firstco.com](http://www.firstco.com) or contact the factory.

## STANDARD FEATURES:

- High efficiency ECM motor
- Drain pan has 3/4" NPT primary and secondary (overflow) fittings
- 240V motor, 24V control
- Factory installed electric heat (up to 10 kW) (except 0 kW models)
- Highly efficient copper tube/aluminum fin cooling coil with factory installed R-410A TXV (non-bleed type)
- Insulated and coated galvanized steel drain pan, sloped for positive drainage
- Effective January 2016, Cabinet air leakage is no more than 2% when tested in accordance with ASHRAE 193.



**Optional Insulated Enclosure**  
(see P. 3 for information)



**Matching Access Panel for Enclosure**  
(non-louvered shown)  
(see P. 3 for information)

## OPTIONAL FEATURES:

- Attractive off-white return air / access panel with captive screws. They can be used with either the non-enclosed **HXX** or the **HXX** with a field or factory installed enclosure.
- **IAQ filter panels** (see P. 3)
- Field installed enclosure. All enclosures are fully insulated and include cutouts for optional ducted return air. Ducted return air option requires remote filter-grille.
- Heat pump kit - required for all **HXX** models having electric heat (**#942-1**). (P. 2)
- Condensate overflow switch (**# SS3**) (field installed)
- Enclosure "Cap Kit" - for above the ceiling installation (P. 4)

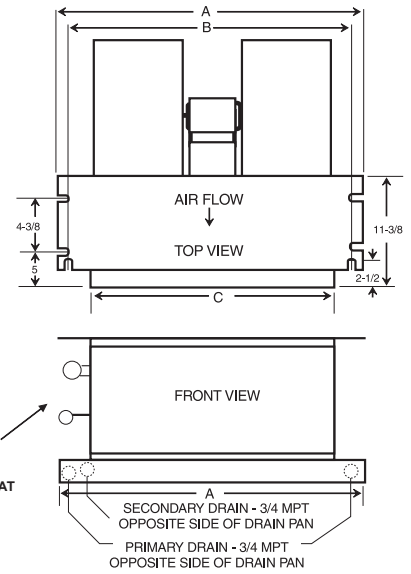
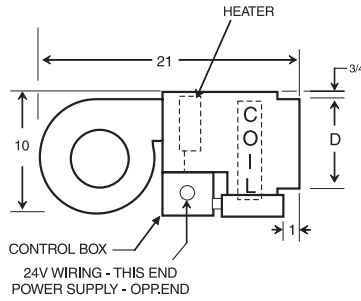
# HXX Series

## 1.0 THROUGH 3.0 TONS

In keeping with its policy of continuous progress and product improvement, First Co. reserves the right to make changes without notice. Maintenance for all First Co. products is available under "Product Maintenance" at [www.firstco.com](http://www.firstco.com).



Approved for installation with 0" clearance to combustibles materials  
**(See P. 5 for Model Numbers)**

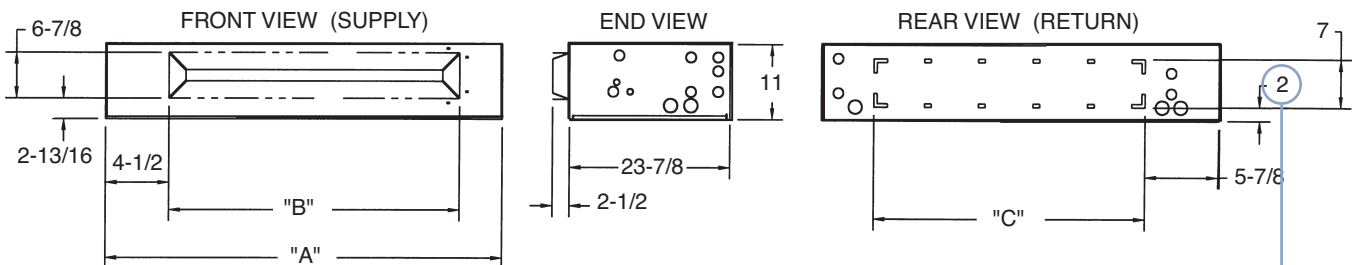


PHYSICAL DIMENSIONS				
MODEL	A	B	C	D
12,19,24HXX	37-1/4	34-11/16	30	6-1/2
20,25HXX	43-1/4	40-11/16	36	6-1/2
26,31HXX	49-1/4	46-11/16	42	6-1/2
28,32,37HXX	56-1/4	53-11/16	49	6-1/2

ENCLOSURE DIMENSIONS				
FOR MODEL	ENCLOSURE NO.	A	B	C
12, 19, 24HXX	9EHX01	39-3/4	30-5/8	28
20, 25HXX	9EHX02	45-3/4	36-5/8	34
26, 31HXX	9EHX03	51-3/4	42-5/8	40
28, 32, 37HXX	9EHX04	58-3/4	50	46-3/4



Picture shown is enclosure with installed HXX  
 (Available from the factory as a complete unit)



**KNOCKOUT FOR DUCTED RETURN**  
 (Requires remote filter grille - field supplied)  
 (Ducted return requires non-louvered panel)

PERFORMANCE DATA												
UNIT MODEL	NOM. CFM	NOM. COOL BTUH	HEAT kW			TOTAL AMPS		MIN. CIR. AMPACITY		MAX FUSE		
			208V	240V	BTUH	208V	240V	208V	240V	208V	240V	
12HXX	-0	400	12,000	---	---	---	1.5	1.5	---	---	15	15
	-3			2.3	3	10,200	12.4	14.0	16	18	20	20
	-5			3.8	5	17,000	19.6	22.4	25	28	25	30
19HXX 20HXX	-0	600	18,000	---	---	---	4.3	4.3	---	---	15	15
	-3			2.3	3	10,200	15.2	16.8	19	21	20	25
	-5			3.8	5	17,000	22.4	25.2	28	32	30	35
	-6			4.5	6	20,500	26.0	29.3	33	37	35	40
	-8			6.0	8	27,300	33.2	37.7	42	47	50	50
	-10			7.5	10	34,100	40.4	46.0	51	58	60	60
24HXX 25HXX 26HXX 28HXX	-0	800	24,000	---	---	---	4.3	4.3	---	---	15	15
	-3			2.3	3	10,200	15.2	16.8	19	21	20	25
	-5			3.8	5	17,000	22.4	25.2	28	32	30	35
	-6			4.5	6	20,500	26.0	29.3	33	37	35	40
	-8			6.0	8	27,300	33.2	37.7	42	47	50	50
	-10			7.5	10	34,100	40.4	46.0	51	58	60	60
31HXX 32HXX	-0	1000	30,000	---	---	---	4.3	4.3	---	---	15	15
	-3			2.3	3	10,200	15.2	16.8	19	21	20	25
	-5			3.8	5	17,000	22.4	25.2	28	32	30	35
	-6			4.5	6	20,500	26.0	29.3	33	37	35	40
	-8			6.0	8	27,300	33.2	37.7	42	47	50	50
	-10			7.5	10	34,100	40.4	46.0	51	58	60	60
37HXX	-0	1200	36,000	---	---	---	4.3	4.3	---	---	15	15
	-3			2.3	3	10,200	15.2	16.8	19	21	20	25
	-5			3.8	5	17,000	22.4	25.2	28	32	30	35
	-6			4.5	6	20,500	26.0	29.3	33	37	35	40
	-8			6.0	8	27,300	33.2	37.7	42	47	50	50
	-10			7.5	10	34,100	40.4	46.0	51	58	60	60

HEAT PUMP KIT (FIELD INSTALLED)	
PART NO.	DESCRIPTION
942-1	KIT FOR HXX MODELS WITH ELECTRIC HEAT

NOTE:  
Heat pump kit must be field installed for all HXX models with electric heat. 0 kW models do not require kit. Contact the factory for compatibility match with condensing unit.



- (1) All BTUH heating ratings at 240V - derate heating capacities by 25% for 208V
- (2) Maximum fuse or HACR-type circuit breaker.

BLOWER DATA																
UNIT MODEL	MOTOR HP (240V)	SPEED TAP	MOTOR BHP	NOM. AMPS	CFM vs. EXTERNAL STATIC PRESSURE											
					0.00	0.05	0.10	0.15	0.20	0.25	0.30	0.35	0.40	.45	.50	
12HXX	1/4	OPTIONAL HIGH	.07	0.7	616	578	539	515	490	466	442	417	392	367	342	
		STD. HIGH	.05	0.6	537	498	460	431	401	374	---	---	---	---	---	
		STD. LOW	.04	0.2	326	265	204	169	134	---	---	---	---	---	---	
19HXX	1/2	OPTIONAL HIGH	.16	1.2	872	847	822	801	781	762	744	722	699	664	629	
		STD. HIGH	.10	.09	735	708	680	659	638	616	595	576	558	535	---	
		STD. LOW	.08	.07	647	616	585	562	538	---	---	---	---	---	---	
20HXX	1/2	OPTIONAL HIGH	.16	1.3	858	836	814	796	778	762	745	727	708	678	649	
		STD. HIGH	.10	1.0	729	703	677	658	640	619	599	581	564	545	526	
		STD. LOW	.08	0.7	624	597	569	548	527	---	---	---	---	---	---	
24HXX	1/2	OPTIONAL HIGH	.31	2.1	983	963	942	926	910	893	875	859	842	828	814	
		STD. HIGH	.23	1.5	830	810	789	771	753	735	717	701	---	---	---	
		STD. LOW	.17	0.8	---	---	---	---	---	---	---	---	---	---	---	
25HXX	1/2	OPTIONAL HIGH	.30	2.1	1006	987	969	954	939	923	907	889	872	858	843	
		STD. HIGH	.20	1.4	826	806	786	768	749	736	723	---	---	---	---	
		STD. LOW	.16	0.8	---	---	---	---	---	---	---	---	---	---	---	
26HXX	1/2	OPTIONAL HIGH	.30	2.1	1051	1033	1014	1003	991	975	960	944	929	912	896	
		STD. HIGH	.20	1.4	878	853	829	813	797	779	760	743	726	713	768	
		STD. LOW	.16	0.8	---	---	---	---	---	---	---	---	---	---	---	
28HXX	1/2	OPTIONAL HIGH	.30	1.8	1167	1140	1112	1078	1045	1014	983	946	908	874	840	
		STD. HIGH	.20	1.5	969	947	924	902	881	862	843	825	807	788	768	
		STD. LOW	.16	0.9	763	727	---	---	---	---	---	---	---	---	---	
31HXX	1/2	OPTIONAL HIGH	.43	3.2	1389	1362	1336	1312	1289	1264	1238	1216	1194	1176	1157	
		STD. HIGH	.32	2.5	1273	1243	1214	1191	1168	1144	1121	1103	1086	1063	1041	
		STD. LOW	.24	1.1	891	---	---	---	---	---	---	---	---	---	---	
32HXX	1/2	OPTIONAL HIGH	.43	2.8	1412	1387	1362	1340	1317	1295	1273	1252	1230	1208	1185	
		STD. HIGH	.32	2.3	1291	1265	1238	1214	1191	1168	1145	1124	1103	1076	1049	
		STD. LOW	.24	---	---	---	---	---	---	---	---	---	---	---	---	
37HXX	1/2	OPTIONAL HIGH	.51	3.3	1479	1455	1431	1410	1389	1369	1348	1327	1305	1284	1264	
		STD. HIGH	.43	2.7	1360	1336	1312	1291	1269	1249	1229	1203	1177	1158	1140	
		STD. LOW	.32	1.9	1197	1172	1146	1124	1103	1077	1052	---	---	---	---	

- (1) Add .05 static when enclosure is used.
- \*\* Does not include electric heat
- \*\* (---) Does not meet the minimum 350 CFM requirement

## CEILING ACCESS PANELS - For HXX's installed without enclosure



# 965-1, 966-1,  
967-1, 967-7



# 965, 966, 967, 967-6  
(Louvers may differ from picture)  
Louvered panels accept 20x20x1" filter  
(field supplied)

### STANDARD PANELS



# 965-M8  
(accepts 1-20x30x1 filter)  
# 966-M8, 967-M8  
(accepts 2-20x20x1 filter)  
# 967-6-M8  
(accepts 2-20x25x1 filter)  
(GlasFloss® Industries Series  
HV filter or equivalent is  
recommended)

NOTE:  
1" filter is Merv8 and 2" filter Merv13

### IAQ PANELS

CEILING ACCESS PANELS							
FOR MODEL	PANEL NO. (STD.)	PANEL NO. (IAQ)	DESCRIPTION	CEILING PANEL OPENING		PANEL FRAME DIMS. (OUTSIDE)	
12, 19, 24HXX	965	965-M8(*)	LOUVERED	24-1/2	40	27-1/2	43
	965-1	NA	NON-LOUVERED	24-1/2	40	27-1/2	43
20, 25HXX	966	966-M8(*)	LOUVERED	24-1/2	46	27-1/2	49
	966-1	NA	NON-LOUVERED	24-1/2	46	27-1/2	49
26, 31HXX	967	967-M8(*)	LOUVERED	24-1/2	52-1/2	27-1/2	55-1/2
	967-1	NA	NON-LOUVERED	24-1/2	52-1/2	27-1/2	55-1/2
28, 32, 37HXX	967-6	967-6-M8(*)	LOUVERED	24-1/2	60	27-1/2	63
	967-7	NA	NON-LOUVERED	24-1/2	60	27-1/2	63



NOTES:  
(\*) Add -2 to end of panel number for panel that accepts 2" filter.

## ENCLOSURES WITH CEILING PANELS - Panels are sold separately from cased units.

CEILING PANEL / ENCLOSURE INFORMATION											
FOR MODEL	ENCLOSURE NO.	ENCLOSURE DIMENSIONS			PANEL NO. (STD.)	PANEL NO. (IAQ)	DESCRIPTION (2)	CEILING PANEL OPENING		PANEL FRAME DIMS (OUTSIDE)	
		H	W	D				W	L	W	L
12, 19, 24HXX	9EHX01	11	39-3/4	23-7/8	965	965-M8(*)	LOUVERED	24-1/2	40	27-1/2	43
					965-1	NA	NON-LOUVERED	24-1/2	40	27-1/2	43
20, 25HXX	9EHX02	11	45-3/4	23-7/8	966	966-M8(*)	LOUVERED	24-1/2	46	27-1/2	49
					966-1	NA	NON-LOUVERED	24-1/2	46	27-1/2	49
26, 31HXX	9EHX03	11	51-3/4	23-7/8	967	967-M8(*)	LOUVERED	24-1/2	52-1/2	27-1/2	55-1/2
					967-1	NA	NON-LOUVERED	24-1/2	52-1/2	27-1/2	55-1/2
28, 32, 37HXX	9EHX04	11	58-3/4	23-7/8	967-6	967-6-M8(*)	LOUVERED	24-1/2	60	27-1/2	63
					967-7	NA	NON-LOUVERED	24-1/2	60	27-1/2	63

NOTES:  
(1) Panels do not mount to cases. See framing detail on page 5  
(2) Panels are sold separately from cases or cased units  
(\*) Add -2 to end of panel number for panel that accepts 2" filter.

(See Panel Pictures Above)

CAP KIT - FOR INSTALLATION ABOVE A SUSPENDED CEILING		
PART NO.	FITS ENCLOSURE NO.	FOR UNIT MODEL
9PHX01	9EHX01	12, 19, 24HXX-C
9PHX02	9EHX02	20, 25HXX-C
9PHX03	9EHX03	26, 31HXX-C
9PHX04	9EHX04	28, 32, 37HXX-C

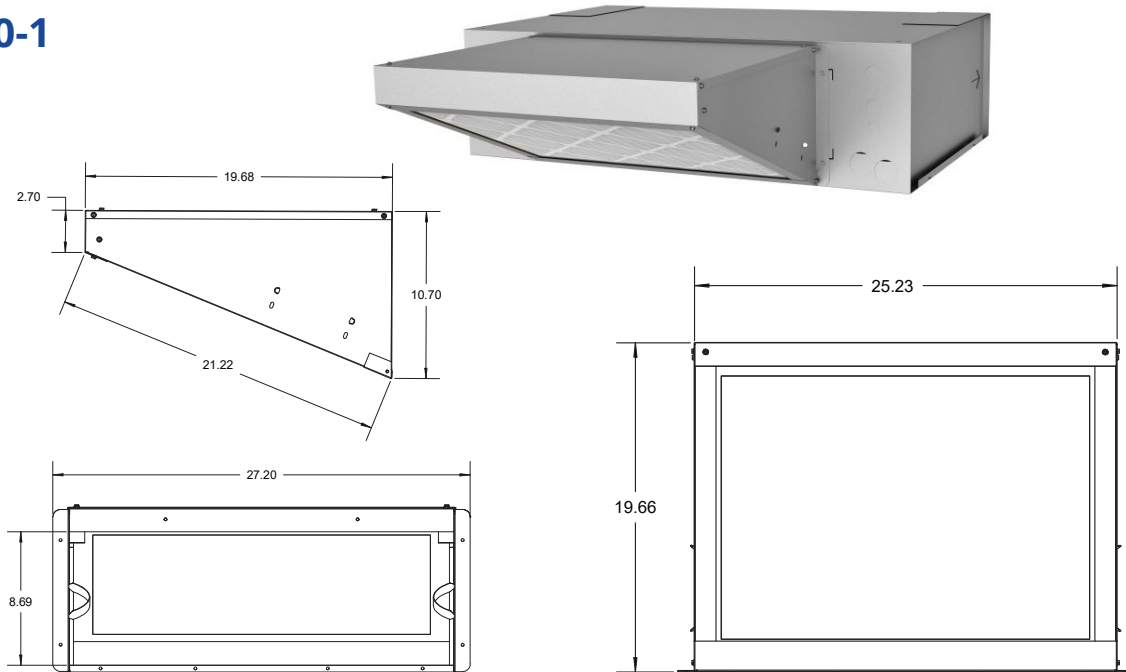
NOTES:  
(1) Cap kit is an insulated panel that covers the entire bottom opening of the enclosure (requires ducted return)  
(2) Cap kit would be used in lieu of the ceiling panel and mounts to the case.

# MERV RATED FILTER BOX FOR ENCLOSURES

## SINGLE FILTER FOR SIZE 12-25HX AND 9EHX01,9EHX02

### PART NUMBER

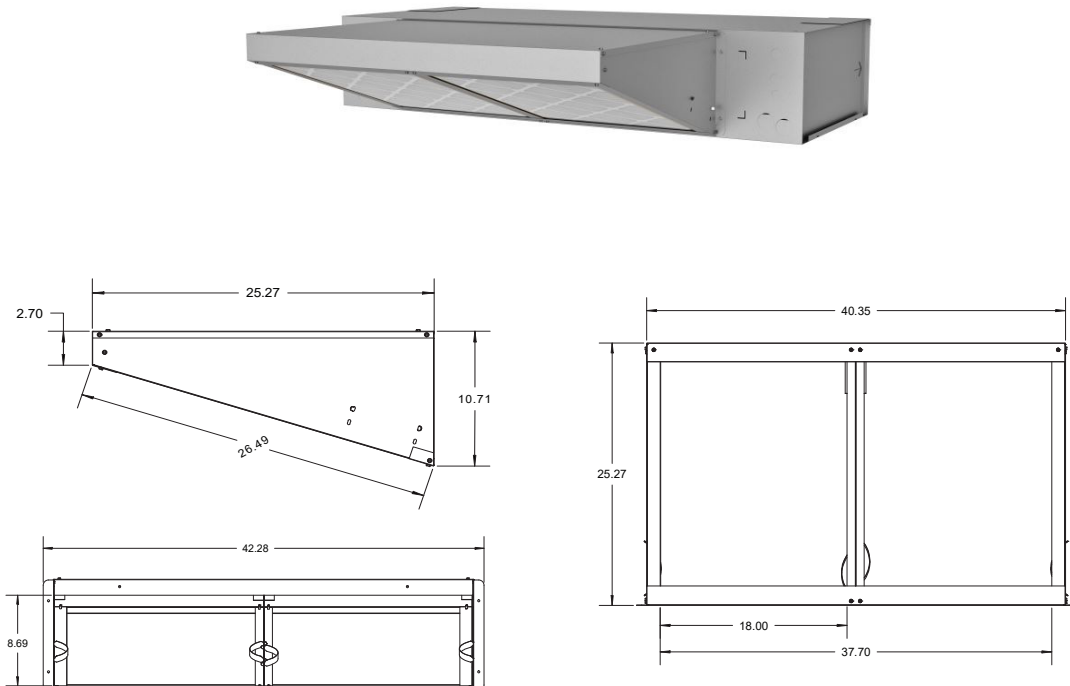
1000-1



## DOUBLE FILTER FOR SIZE 31-37HX AND 9EHX03,9EHX04

### PART NUMBER

1000-2



**Note: Add 0.38 static with MERV13 Filter vs 0.30 static with MERV11 Filter (2" Filter)**

# HXX Series

## 1.0 THROUGH 3.0 TONS

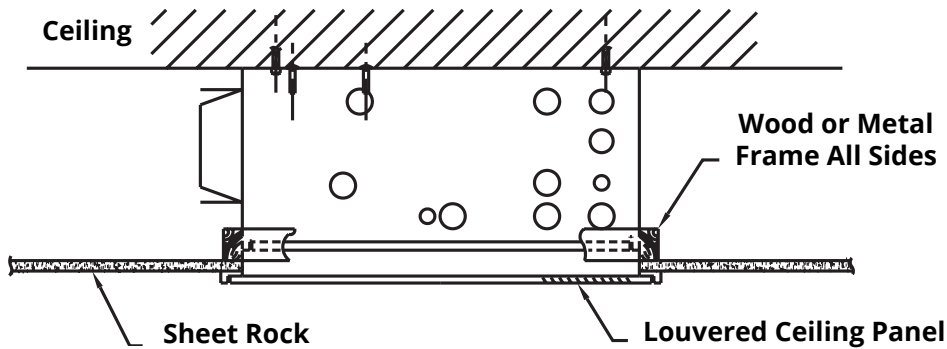
### MODEL NUMBERS

MODEL SIZE (BTU)	UNCASED (NO ENCLOSURE)	FACTORY INSTALLED ENCLOSURE
	(ALL WITH FACTORY INSTALLED R410A TXV)	(ALL WITH FACTORY INSTALLED R410A TXV)
	MODEL	MODEL
12,000	12HXX(*) R410 TXV	12HXX(*)-C R410 TXV
18,000	19HXX(*) R410 TXV	19HXX(*)-C R410 TXV
18,000	20HXX(*) R410 TXV	20HXX(*)-C R410 TXV
24,000	24HXX(*) R410 TXV	24HXX(*)-C R410 TXV
24,000	25HXX(*) R410 TXV	25HXX(*)-C R410 TXV
24,000	26HXX(*) R410 TXV	26HXX(*)-C R410 TXV
24,000	28HXX(*) R410 TXV	28HXX(*)-C R410 TXV
30,000	31HXX(*) R410 TXV	31HXX(*)-C R410 TXV
30,000	32HXX(*) R410 TXV	32HXX(*)-C R410 TXV
36,000	37HXX(*) R410 TXV	37HXX(*)-C R410 TXV

All TXV's are approved for cooling only or heat pump operation (non-bleed type).

(\*) = kW HEAT

### ENCLOSURE INSTALLATION SUPPORT FRAMING



### ENCLOSURE CONNECTION LOCATIONS

