

SLANT/FIN BOILERS

Residential – Gas, Oil, Electric & High Efficiency
Commercial – Gas & Oil
Commercial – High Efficiency

Slant/Fin®

TRADE PRICE BOOK

EFFECTIVE: April 15, 2019

Trade price books intended for wholesaler use only.

**ARE YOU AWARE OF OUR CONTRACTOR
HYDRO-MASTER PROGRAM?
CONTACT YOUR REP FOR DETAILS!**

Many models DOE 2021 Compliant

SPOTLIGHT ON HIGH EFFICIENCY:

VGH Boiler.....pgs.11 & 25
Q3 Boiler.....pg.18



VGH Boiler



Q3 Boiler



TABLE OF CONTENTS

		Description	AHRI Net Rating Range		Page(s)
			Water MBh	Steam MBh	
GAS-FIRED BOILERS					
Sentry	S Series	Hot water models, integral draft diverter	25 to 109		3
Sentinel	SE Series	Hot water models	50 to 150		4
Galaxy	GG Series	Hot water models, basic or packaged	182 to 280		5-6
	GXH Series	Hot water, packaged with optional tankless heater	76 to 137		7
	GXH/GXHA Series	Steam models, integral draft diverter with optional tankless heater		61 to 182	8
Victory II	VHS Series	Hot water models, power vent	23 to 130		9
Victory	VSPH Series	Hot water models, sealed combustion, direct vent	45 to 134		10
VGH	VGH Series	Hot water model, modulating, condensing, high efficiency	238 to 414		11
CHS	CHS Series	Hot water model, modulating, condensing, high efficiency	68 to 330		12
OIL-FIRED BOILERS					
Intrepid	TR Hot Water Series	Hot water packaged with optional tankless heater	77 to 311		13
Intrepid	TR Steam Series	Low pressure steam		98 to 272	14
Intrepid	TR KD Series	Knocked-down boilers and boiler/burner units	77 to 331	98 to 272	15-16
Intrepid	TRDV Series	Hot water, direct vent models, packaged with tankless heater	116		17
Q3	Q3 Series	Hot water, no tankless, solid front, packaged	80 to 176		18
XL-2000	XL Series	Hot water, no tankless, solid front, packaged	105 to 120		19
ELECTRIC BOILERS					
Monitron	EH Series	Electric hot water boilers	(240V) 27 to 137 (8kw to 40kw)		20
Monitron Deluxe Series (EH-M2 & Minitron EH-M3)		Electric hot water boilers	(240V) 27 to 137 (8kw to 40kw)		21
DOMESTIC HOT WATER					
HWT	HWT Series	Indirect Fired Water Heater			22
VENT DAMPERS					
					23
AIR PACKAGES					
		For residential boilers.			23
COMMERCIAL BOILERS:					
GAS, OIL					
Caravan (Gas)		Hot water and low pressure steam modules, packaged	423 to 2797	359 to 896	24,28
VGH (Gas)		VGH Common Venting	476 to 5000		25
CHS Caravan Multiple Boilers		CHS Multiple Boiler	564 to 2640		26
		CHS Common Venting			27
Caravan (Oil)		Hot water and low pressure steam modules, packaged	435 to 2469	375 to 1539	29-30
Controls and Accessories, Vent Dampers & Headers		Modular Step Controls, Header Sets & Vent Dampers for intermittent ignition pilots			31-32
External Tankless Heaters					32
Vintage Boilers					33
MATERIAL RETURN AUTHORIZATION					
		Policy and procedures for return of boilers and parts under warranty.			34
SLANT/FIN BOILER WARRANTIES					
		All models			35-37
SLANT/FIN VGH / CHS BOILER WARRANTY					
					37
SUMMARY OF LIMITED BOILER WARRANTIES					
					Back Cover
CODE APPROVALS					
					Back Cover

All product details and specifications are subject to change.



NATURAL DRAFT • ATMOSPHERIC
includes "S" models with integral draft diverter

GAS

Hot Water Boilers

Sentry

S SERIES

RATINGS AND PRICES

Model No.	Packaged Boiler (Nat. Gas or Propane) with vent damper		Ratings for Natural and L.P. Propane Gases				A.F.U.E. % Intermittent Ignition	Vent Size Nominal Dia.
	Intermittent Pilot Ignition		C.S.A. Input (MBH)	D.O.E. Capacity (Btuh)	Net* AHRI (MBH)	Net* Rating (Sq. Ft)		
	Trade Price	Ship Wt.						
S-34EDP	2194	187	34	29,000	25	167	✓ 84.0	4"
S-60EDP	2304	242	60	51,000	44	293	✓ 84.4	4"
S-90EDP	2467	300	90	76,000	66	440	✓ 84.2	5"
S-120EDP	2685	353	120	101,000	88	587	✓ 84.1	6"
S-150EDP	2957	402	150	126,000	110	733	✓ 84.0	6"



UNITED STATES DEPARTMENT OF ENERGY
2021 DOE COMPLIANT ✓
with Energy Conservation Program

Standard Equipment

Pre-assembled cast-iron heat exchanger with built-in air separator
 Insulated base
 Pre-assembled insulated flush jacket
 Integral draft diverter
 Stainless steel gas burners, gas orifices and manifold assembly
 Combination gas valve including manual shut-off, pressure regulator, pilot adjustment
 Intermittent pilot ignition system
 Tridicator
 Pressure relief valve (ASME) 30 psi †
 2-way combination control (hi-limit and circulator relay)
 Circulator, Taco 007, with 1-1/4" flange
 Drain cock
 Blocked vent safety switch — mounted
 Rollout safety switch
 Motorized vent damper

Control Features:

- Thermal targeting technology to conserve fuel
- LWCO function – Auto or manual reset
- Thermal pre-purge option
- LED display for operational info
- Circulator relay – 3 function options

(Outdoor reset optional, use outdoor reset sensor kit listed below)

Optional Equipment

	Order Code	Add
Propane (L.P.) Options:		
Propane, L.P. factory installed. Specify PROPANE L.P. gas.		N/C
Field conversion kits:		
Intermittent Pilot—natural gas to propane (model S-34)	414-540	189
Intermittent Pilot—natural gas to propane (model S-60 thru S-150)	414-546	189
Intermittent Pilot—propane to natural gas (model S-34)	415-540	62
Intermittent Pilot—propane to natural gas (model S-60 thru S-150)	415-546	72
Base for combustible flooring:		
S-34 thru S-90	412-268	106
S-120 thru S-150	412-269	112
Eliminate circulator	Deduct	144
Replace Taco 007 1-1/4" circulator on P boilers with:		
Grundfos UPS 15-58F 1-1/4" circulator		N/C
B & G NRF 22 - 1-1/4"		N/C
Taco 0010 circulator		92
Taco 110 1-1/4" circulator		128
B & G model 100 1-1/4" circulator		155
Air package selection and prices, see page 22.		
Outdoor reset sensor kit	430423	55

* Net ratings are based on piping and pick-up allowance of 1.15. Slant/Fin should be consulted before selecting a boiler for installation having unusual piping and/or pick-up requirements. Ratings must be reduced by 4% at 2,000 feet elevation and an additional 4% for every additional 1,000 feet elevation over 2,000 feet.

† Boilers are factory equipped with 30 psi A.S.M.E. relief valves. Boilers are rated for 50 psi working pressure.

GAS

NATURAL DRAFT • ATMOSPHERIC

Sentinel

SE SERIES

Hot Water Boilers**RATINGS AND PRICES**

Model No.	Packaged Boiler (Nat. Gas or Propane) with vent damper		Ratings for Natural and L.P. Propane Gases				A.F.U.E. % Intermittent Ignition	Vent Size Nominal Dia.
	Intermittent Pilot Ignition		C.S.A. Input (MBH)	D.O.E. Capacity (Btuh)	Net* AHRI (MBH)	Net* Rating (Sq. Ft)		
Trade Price	Ship Wt.							
SE-70EDP	2311	232	70	58,000	50	333	84	4"
SE-105EDP	2491	277	105	87,000	76	507	84	5"
SE-140EDP	2797	322	140	116,000	101	673	84	5"
SE-175EDP	3064	370	175	145,000	126	840	84	6"
SE-210EDP	3550	423	210	173,000	150	1000	84	6"



UNITED STATES
DEPARTMENT OF ENERGY
2021 DOE COMPLIANT
with Energy Conservation Program

Standard Equipment

Pre-assembled cast-iron heat exchanger with built-in air separator
 Insulated base
 Pre-assembled insulated flush jacket
 External draft hood (SE-70 through SE-175 packed in crate)
 Stainless steel gas burners, gas orifices and manifold assembly
 Combination gas valve including manual shut-off, pressure regulator, pilot adjustment
 Intermittent pilot ignition system
 Tridicator
 Pressure relief valve (ASME) 30 psi †
 2-way combination control (hi-limit and circulator relay)
 Circulator, Taco 007, with 1-1/4" flange
 Drain cock
 Blocked vent safety switch — unmounted
 Motorized vent damper
 Rollout safety switch

Control Features:

- Thermal targeting technology to conserve fuel
- LWCO function – Auto or manual reset
- Thermal pre-purge option
- LED display for operational info
- Circulator relay – 3 function options

(Outdoor reset optional, use outdoor reset sensor kit listed below)

Optional Equipment

	Order Code	Add
Propane (L.P.) Options:		
Propane, L.P. factory installed. Specify PROPANE L.P. gas.		N/C
Field conversion kits:		
Intermittent Pilot—natural gas to propane	414-547	189
Intermittent Pilot—propane to natural gas	415-547	72
Base for combustible flooring:		
SE-70 and SE-105	412-268	106
SE-140 through SE-210	412-269	112
Eliminate circulator	Deduct	144
Replace Taco 007 1-1/4" circulator on P boilers with:		
Grundfos UPS 15-58F 1-1/4" circulator		N/C
B & G NRF 22 - 1-1/4"		N/C
Taco 0010 circulator		92
Taco 110 1-1/4" circulator		128
B & G model 100 1-1/4" circulator		155
Slant/Fin air package numbers: SE-70 and SE-105, #109; SE-140, SE-175, SE-210, #110. See p. 22 for order information.		
Outdoor reset sensor kit	430423	55

* Net ratings are based on piping and pick-up allowance of 1.15. Slant/Fin should be consulted before selecting a boiler for installation having unusual piping and/or pick-up requirements. Ratings must be reduced by 4% at 2,000 feet elevation and an additional 4% for every additional 1,000 feet elevation over 2,000 feet.

† Boilers are factory equipped with 30 psi A.S.M.E. relief valves. Boilers are rated for 50 psi working pressure.



NATURAL DRAFT • ATMOSPHERIC

GAS

Hot Water Boilers

Galaxy

GG SERIES

RATINGS AND PRICES

Models with INTERMITTENT PILOT and VENT DAMPER



Model No. †	Packaged Boiler (Natural Gas)		Natural and L.P. Propane Gases				AFUE %	Vent Size Nominal Diameter Inches
	Trade Price	Ship Wt.	C.S.A. Input (MBH)	D.O.E. Capacity (Btuh)	Net* AHRI (MBH)	Net* Rating (Sq. Ft.)		
* GG-250HEDP	4057	500	250	211,000	183	1220	84.0	8
* GG-275HEDP	4330	510	275	233,000	203	1353	84.0	8
GG-300EDP	4519	578	300	243,000§	211	1407	81.1§	8
GG-350HEDP‡	5225	650	350	285,000§	253	1653	81.4§	9
GG-375HEDP	5567	650	375	303,000§	263	1753	80.9§	10
GG-399HEDP	5630	650	399	322,000§	284	1867	80.6§	10

See footnotes and optional equipment on page 6.

Standard Equipment

	P
Pre-assembled cast-iron heat exchanger built-in air separator	X
Insulated base	X
Pre-assembled insulated flush jacket	X
Flue collector	X
Stainless steel gas burners, gas orifices and manifold assembly	X
Combination gas valve including manual shut-off, pressure regulator, pilot adj. and 100% shut-off	X
2-way combination control (hi-limit and circulator relay)	X
Hi-limit control	X
Tridicator	X
Pressure relief valve (ASME) 30 psi ‡	X
Draft hood (Ships in separate carton)	X
Circulator, Taco 0010 for GG-225 thru GG-399	X
Flange for circulator; 1-1/4";1-1/2" (GG-250 thru GG-399)	X
Circulator manifold	X
Drain cock	X
Rollout safety switch	X
Blocked vent safety switch (unmounted)	X
Motorized vent damper (models with suffix "D")	X
Intermittent ignition pilot	X

Control Features:

- Thermal targeting technology to conserve fuel
- LWCO function – Auto or manual reset
- Thermal pre-purge option
- LED display for operational info
- Circulator relay – 3 function options

(Outdoor reset optional, use outdoor reset sensor kit listed below)

See note on page 6 for optional equipment

FOOTNOTES:

* Net ratings are based on piping and pick-up allowance of 1.15. Slant/Fin should be consulted before selecting a boiler for installation having unusual piping and/or pick-up requirements. Ratings must be reduced by 4% at 2,000 feet elevation and an additional 4% for every additional 1,000 feet elevation over 2,000 feet.

† "P" for packaged water boiler. Type of gas: after model number, specify gas by

name: "Natural" or "Propane."

‡ Boilers are factory equipped with 30 psi A.S.M.E. relief valves. Boilers are

rated for 100 psi working pressure.

§ Gross output rating (MBH) and thermal efficiency.

Factory installed options.

Δ Specify boiler model number.

‡ For use with natural gas. For Propane (L.P.) gas consult factory.

‡‡ Specify gas valve number for all Honeywell kits.

GAS

Galaxy GG SERIES

Hot Water Boilers



Optional Equipment

	Order Code	Add
Propane (L.P.) Options:		
# Propane gas (factory installed) specify propane (L.P.) gas.		35
Δ Propane (for intermittent pilot only) (field assembly) kit for nat. gas to propane equipped with Honeywell valves ONLY ‡‡	414-519	194
Δ Eliminate circulator from "P" boiler only. Boilers up to 200,000 Btu input	Deduct	144
Boilers over 200,000 Btu input	Deduct	178
Replace Taco 0010 circulator on P boilers with: Taco 110 (GG-225 thru GG-399)		41
B&G 100 (GG-225 thru GG-399)		66
Base for combustible flooring: GG-250 and GG-275	411-778	82
GG-300 thru GG-399	411-779	85
Air package selection and prices, see page 22.		
Outdoor reset sensor kit	430423	55

Definition of model number suffixes:

- E = Intermittent pilot ignition system
- D = Motorized vent damper
- P = Packaged boiler



Hot Water Boilers (With Tankless Heater) and Steam Boilers (Tankless Heater Optional)

Galaxy

GXH SERIES
GXHA SERIES

RATINGS AND PRICES – HOT WATER MODELS

**Hot water models with
INTERMITTENT PILOT and VENT DAMPER**

Model No. †	Packaged Water Bkr. with Tankless Htr. (Nat. Gas or Propane)		Ratings for Nat. and LP Propane Gases				AFUE %	Vent Size Nominal Dia. Inches
	Trade Price	Ship Wt.	Hot Water		Net Ratings*			
			C.S.A. Input BTU/HR	D.O.E. Capacity (MBH)	AHRI Water (MBH)	Water Sq.Ft.		
GXH-105EDPT	3547	365	105	87,000	76	500	82.50	5
GXH-125EDPT	3762	375	126	104,000	90	600	82.50	6
GXH-150EDPT	4182	437	147	122,000	106	706	82.50	7
GXH-170EDPT	4416	450	168	140,000	122	813	82.50	7
GXH-190EDPT	4658	460	189	158,000	137	913	82.50	7

Control Features:

- Thermal targeting technology to conserve fuel
- LWCO function – Auto or manual reset
- Thermal pre-purge option
- LED display for operational info
- Circulator relay – 3 function options

(Outdoor reset optional, use outdoor reset sensor kit listed below)

Standard

Equipment – Hot Water and Steam	PT	PZ	PZT
Pre-assembled cast-iron heat exchanger with built-in air separator	X	X	X
Pre-assembled insulated flush jacket	X	X	X
Insulated base	X	X	X
Flue collector	X	X	X
Stainless steel gas burners, gas orifices and manifold assembly	X	X	X
Combination gas valve including manual shut-off, pressure regulator, pilot adj. & 100% shut-off	X	X	X
Speed-skimmer trough		X	
Steam pressure limit control with siphon (unmounted)		X	X
Pressure gauge (unmounted)		X	X
Low water cut-off (unmounted) float type			X
Low water cut-off (mounted) electronic (PSE802-24 Standard, Hydrolevel optional at no extra chg) (Choice of Hydrolevel 400 or MM PSE802-24)			X
Water level sight glass (unmounted)		X	X
Steam pressure relief valve (ASME) 15 psi ¶		X	X
Hot water pressure relief valve (ASME) 30 psi ††		X	
Draft hood ** (Integral draft diverter, GXHA Models)	X	X	X
Drain cock	X	X	X
Transformer and junction box		X	X
Tankless heater	X		X
Low limit control			X
Tridicator	X		
3-way combination control (hi-limit circulator relay and lo-limit with differential)	X		
Circulator Taco 007 (GXH-105 thru GXH-190); Flange for circulator;	X		
1-1/4" (GXH-105 thru GXH-190)	X		
Circulator manifold	X		
Rollout safety switch	X	X	X
Blocked vent safety switch (unmounted except for GXHA)	X	X	X
Motorized vent damper (models with suffix "D")	X	X	X
Intermittent ignition pilot	X	X	X

Definition of model number suffixes:
E = Intermittent pilot ignition system
D = Motorized vent damper
PT = Packaged water boiler with tankless heater
PZ = Packaged steam boiler
PZT = Packaged steam boiler with tankless heater

FOOTNOTES—Hot Water and Steam Models:

- * Net ratings are based on a piping and pick-up allowance of 1.333 (steam) and 1.15 (hot water). Slant/Fin should be consulted before selecting a boiler for installation having unusual piping and pick-up requirements. Ratings must be reduced by 4% at 2,000 feet elevation and an additional 4% for every additional 1,000 feet elevation over 2,000 feet.
- † Add suffix PT for packaged water boiler with tankless heater, PZ for steam boiler, PZT for packaged steam boiler with tankless heater. Type of gas: after model number, specify gas by name "Natural" or "Propane".
- § Gross output rating (Btuh) and thermal efficiency.
- # Factory installed options.
- ¶ Maximum working pressure; 15 psi steam.
- †† Boilers are factory equipped with 30 psi A.S.M.E. relief valves. Boilers are rated for 50 psi working pressure. Specify boiler model number.
- ** Draft hood is shipped within crate for models up through GXH-125. For all larger sizes draft hood ships in a separate carton. For GXHA models, integral draft diverter is shipped within crate.
- ¢ For use with natural gas. For Propane (L.P.) gas consult factory.

RATINGS AND PRICES – STEAM MODELS

Steam models with
INTERMITTENT PILOT and VENT DAMPER (GXHA models have integral draft diverter)



Model No. †	Ratings for Nat. and LP Propane Gases				Ratings for Nat. and LP Propane Gases				AFUE %	Vent Size Nominal Diam. Inches
	PZ with no provision for Tankless Heater		PZT with Tankless Heater		Steam		Net Ratings*			
	Trade Price	Ship Wt.	Trade Price	Ship Wt.	C.S.A. Input (MBH)	D.O.E. Capacity (Btuh)	AHRI Steam (MBH)	AHRI Steam Sq. Ft.		
* GXHA-100ED	2809	351	3156	370	100	81,000	61.0	254	82.00	5
* GXHA-120ED	2973	360	3337	380	120	98,000	73.5	306	82.00	6
* GXHA-160ED	3525	430	3878	450	160	131,000	98.0	408	82.00	6
* GXHA-200ED	3872	495	4239	515	200	165,000	124.0	516	82.00	7
* GXH-230ED	4081	500	4430	520	231	190,000	142.5	592	82.00	7
* GXH-250ED	4383	550	4737	570	252	208,000	156.0	650	82.00	7
* GXH-275ED	4512	555	4868	575	273	226,000	169.5	706	82.00	7
GXH-300HED ^c	4908	555	5241	575	300	239,000 [§]	182.0	746	79.70 [§]	9

Optional Equipment

Equipment	Order Code	Add	Order Code	Add
Base for combustible flooring: GXH-105 thru GXH-125 & GXHA-100	411-776	71		
GXH-150 thru GXH-230 & GXHA-160 through 200	411-777	71		
GXH-250 and GXH-300	411-779	85		
Hydrolevel feeder VXT-24 for Hydrolevel L.W.C.O. only	410-820	301		
Eliminate circulator from PT boiler only: Boilers up to 200,000 Btu input	Deduct	144		
Replace Taco 007 1-1/4" circulator on P or PT boilers(boilers up to 200,000 Btuh input) with: Grundfos UPS 15-58F 1-1/4" circulator		N/C		
B & G NRF 22 - 1-1/4" circulator		N/C		
Taco 0010 circulator		92		
Taco 110 1-1/4" circulator		128		
B & G model 100 1-1/4" circulator		155		
Outdoor reset sensor kit (Water Only)	430423	55		
			Propane (L.P.) options:	
			*** Propane (L.P.) factory installed, specify propane L.P. gas.	35
			Propane (for intermittent pilot) (field assembly) kit natural gas to propane: GXH-105 thru GXH-275 models	414-528 219
			Air package selection and prices, see page 22.	

FOOTNOTES—Hot Water and Steam Models:

- * Net ratings are based on a piping and pick-up allowance of 1.333 (steam) and 1.15 (hot water). Slant/Fin should be consulted before selecting a boiler for installation having unusual piping and pick-up requirements. Ratings must be reduced by 4% at 2,000 feet elevation and an additional 4% for every additional 1,000 feet elevation over 2,000 feet.
- † Add suffix PT for packaged water boiler with tankless heater, PZ for steam boiler, PZT for packaged steam boiler with tankless heater. Type of gas: after model number, specify gas by name "Natural" or "Propane".
- § Gross output rating (Btuh) and thermal efficiency.
- # Factory installed options.
- ¶ Maximum working pressure; 15 psi steam.
- †† Boilers are factory equipped with 30 psi A.S.M.E. relief valves. Boilers are rated for 50 psi working pressure. Specify boiler model number.
- ** Draft hood is shipped within crate for models up through GXH-125. For all larger sizes draft hood ships in a separate carton. For GXHA models, integral draft diverter is shipped within crate.
- c For use with natural gas. For Propane (L.P.) gas consult factory.



POWER VENT - SPARK IGNITION

GAS

Hot Water Boilers

Victory II

VHS SERIES



RATINGS AND PRICES

Model No.	Packaged Water Boiler (Nat. Gas or Propane) Intermittent Pilot		Ratings for Natural and L.P. Propane Gases				A.F.U.E. %	Pressure Venting Vent Size Diameter Inchest†	Chimney or Type "B" Vent Size †
	Trade Price	Ship Wt.	CSA Input (MBH)§	D.O.E. Capacity (Btuh)	Net* AHRI Water (MBH)	Net** AHRI Water (Sq. Ft.)			
VHS-30EP	2351	182	30	26,000	23	153	84.5	3	—
VHS-60EP	2500	231	60	50,000	43	287	83.4	3	—
VHS-90EP	2677	278	90	75,000	65	433	82.8	3	5
VHS-120EP	2887	333	120	100,000	87	580	82.2	3	5
VHS-150EP	3191	382	150	125,000	109	727	82.1	3	5
VHS-180EP	3491	435	180	149,000	130	867	82.0	3	5

Standard Equipment

PACKAGED WATER BOILER includes:
 Pre-assembled cast-iron heat exchanger with built-in air eliminator Insulated Base
 Pre-assembled insulated flush jacket
 Gas burners, gas orifices and manifold assembly
 Combination gas valve, including manual shut-off, pressure regulator and pilot adjustment
 Intermittent pilot ignition system
 Pressure and temperature gauge
 LWCO function
 Control w/LED and display

Pressure relief valve (ASME)‡
 Circulator 1-1/4"
 Drain cock
 Inducer assembly
 Air flow proving switch
 Built-in condensate drain, trap and stainless steel vent pipe adapter
 Rollout safety switch
For propane, specify when ordering.

Control Features:

- Thermal targeting technology to conserve fuel
 - LWCO function – Auto or manual reset
 - Thermal pre-purge option
 - LED display for operational info
 - Circulator relay – 3 function options
- (Outdoor reset optional, use outdoor reset sensor kit listed below)

Optional Equipment

	Heat-Fab Order Code	Slant/Fin Order Code	Add
3" diameter Saf-T EZ Seal venting system (AL 29-4C▲ stainless steel)			
6" long vent pipe	9301	455-020	34
12" long vent pipe	9302	455-021	42
18" long vent pipe	9304	455-022	50
24" long vent pipe	9305	455-023	74
37½" long vent pipe	9307	455-024	99
Elbow termination with screen	7314TERM	440-678	113
Support, 6" clearance	7323GCC	440-679	26
Support, 2" clearance	7323GC2	440-692	24
Support clamp	4327SS	440-680	24
45° elbow	9311	455-017	74
90° elbow	9314LR	455-019	110
90° elbow tight radius	9314	455-018	110
TEE termination with screen	7390TEE	440-683	112
Straight termination with screen	7392GC	660-548	43
6"-19" slip joint connector	9324	455-025	87
Inline condensate drain	9321	455-027	63
Fire stop	5318C1	440-685	128
Wall thimble for 5" - 8" wall (must be used with slip joint connector)		440-695	63
Sealant, Dow Corning 732, 3 oz. tube		440-691	17
Sealant, Dow Corning 732, 10 oz. cartridge		440-693	23
Propane (L.P.) Options:			
Propane, L.P. factory installed. Specify PROPANE L.P. gas			N/C
Field Conversion Kits: Natural gas to propane		414-538	191
Propane to natural gas		415-538	191
Base for combustible flooring: VHS-60 & VHS-90		451-074	122
VHS-120 through VHS-180		451-075	150
Eliminate circulator		Deduct	144
Replace Taco 007 1-1/4" circulator with:			N/C
Grundfos UPS 15-58F 1-1/4" circulator			N/C
B & G NRF 22-1-1/4"			N/C
Taco 0010 circulator			92
Taco 110 1-1/4" circulator			128
B & G model 100 1-1/4" circulator			155
Outdoor reset sensor kit		430423	55

* Net ratings are based on piping and pick-up allowance of 1.15. Slant/Fin should be consulted before selecting a boiler for installation having unusual piping and/or pick-up requirements.
 § Inputs must be reduced by 4% at 2,000 feet elevation and an additional 4% for every additional 1,000 feet elevation over 2,000 feet.
 ** Based on heat emission of 150 Btu per square foot.
 ‡ Boilers are factory equipped with 30 psi A.S.M.E. relief valves. Boilers are rated for 50 psi working pressure.
 † See publication VHS-40 for venting system materials and restrictions.

MAXIMUM EQUIVALENT FLUE LENGTH

40 ft. for all models. May differ for certain vent system manufacturers and altitudes. Vent terminal does not affect calculation of total equivalent length.
 See installation instructions, Pub. VHS-41

▲ AL 29-4C is a registered trademark of Allegheny Ludlum Corp.

GAS

**SEALED COMBUSTION-DIRECT VENT,
SPARK IGNITION**

Victory
VSPH SERIES

Hot Water Boilers
with Termination Kit



RATINGS AND PRICES

Model No.	Packaged Water Boiler (Nat. Gas or Propane) Intermittent pilot		Ratings for Natural and L.P. Propane Gases				A.F.U.E. %	Vent Size Diameter Nominal†	Air Intake Nominal Diameter †
	Trade Price	Ship Wt.	C.S.A. Input (MBH)§	D.O.E. Capacity (Btuh)	Net* AHRI (MBH)	Net** AHRI (Sq. Ft.)			
VSPH-60	2893	261	60	52,000	45	300	✓ 86.1	3	3
VSPH-90	3100	318	90	78,000	68	453	✓ 85.7	3	3
VSPH-120	3340	379	120	103,000	90	600	✓ 85.5	3	3
VSPH-150	3664	433	150	128,000	111	740	✓ 85.2	3	3
VSPH-180	4010	489	180	154,000	134	893	✓ 85.1	3	3



Standard Equipment

Pre-assembled cast-iron heat exchanger with built-in air eliminator Insulated base
Pre-assembled insulated flush jacket
Gas burners, gas orifices and manifold assembly
Combination gas valve, including manual shut-off, pressure regulator and pilot adjustment
Integrated boiler control with built-in diagnostics
Intermittent pilot ignition system
Pressure and temperature gauge
Pressure relief valve (ASME)‡

Circulator 1-1/4"
Drain cock
Inducer assembly
Air flow proving switch
Built-in condensate drain, trap and stainless steel vent pipe adapter
Rollout safety switch
Unitized vent terminal (**requires straight termination with screen and slip joint connector; see below**)
For propane, specify when ordering.

Control Features:

- Thermal targeting technology to conserve fuel
- Circulator remains off until boiler water reaches 120°F to reduce potential of condensing
- Thermal pre-purge option
- LED display for operational info

Optional Equipment

	Heat-Fab Order Code	Slant/Fin Order Code	Add
3" diameter Saf-T EZ Seal venting system (AL 29-4C▲ stainless steel)			
6" long vent pipe	9301	455-020	34
12" long vent pipe	9302	455-021	42
18" long vent pipe	9304	455-022	50
24" long vent pipe	9305	455-023	74
48" long vent pipe	7308GC	440-676	148
37½" long vent pipe	9307	455-024	99
Elbow termination with screen	7314TERM	440-678	113
Support, 6" clearance	7323GCC	440-679	26
Support, 2" clearance	7323GC2	440-692	24
Support clamp	4327SS	440-680	24
45° elbow	9311	455-017	74
90° elbow	9314LR	455-019	110
90° elbow tight radius	9314	455-018	110
TEE termination with screen	7390TEE	440-683	112
Straight termination with screen	7392GC	660-548	43
6"-19" slip joint connector	9324	455-025	87
Inline condensate drain	9321	455-027	63
Fire stop	5318C1	440-685	128
Wall thimble for 5" - 8" wall (must be used with slip joint connector)		440-695	63
Sealant, GE-RTV 106, 3 oz. tube		440-690	17
Sealant, Dow Corning 732, 3 oz. tube		440-691	17
Sealant, Dow Corning 732, 10 oz. cartridge		440-693	23
Propane (L.P.) Options:			N/C
Propane, L.P. factory installed. Specify PROPANE L.P. gas			73
Field Conversion Kits:			55
Natural gas to propane		414-539	
Propane to natural gas		415-539	
Base for combustible flooring:	VSPH-60 and VSPH-90	451-074	122
	VSPH-120 through VSPH-180	451-075	150
Eliminate circulator		Deduct	144
Replace Taco 007 1-1/4" circulator with:	Grundfos UPS 15-58F 1-1/4" circulator		N/C
	B & G NRF 22-1-1/4"		N/C
	Taco 0010 circulator		92
	Taco 110 1-1/4" circulator		128
	B & G model 100 1-1/4" circulator		155

* Net ratings are based on piping and pick-up allowance of 1.15. Slant/Fin should be consulted before selecting a boiler for installation having unusual piping and/or pick-up requirements.
§ Inputs must be reduced by 4% at 2,000 feet elevation and an additional 4% for every additional 1,000 feet elevation over 2,000 feet.
** Based on heat emission of 150 Btu per square foot.
‡ Boilers are factory equipped with 30 psi A.S.M.E. relief valves. Boilers are rated for 50psi working pressure.
† See publication VSPH-40 for venting and air intake system materials and restrictions.
▲ AL 29-4C is a registered trademark of Allegheny Ludlum Corp.
△ Required with unitized vent terminal for through the wall venting.

MAXIMUM EQUIVALENT FLUE LENGTH	
VSPH-60, VSPH-90 & 120:	40 ft.
VSPH-150:	35 ft.
VSPH-180:	33 ft.
May differ for certain vent system manufacturers and altitudes. Vent terminal does not affect calculation of total equivalent length. See installation instructions, Pub. VSPH-40	

Manufacturer	Type/System	Adapter Part No.	Sealant
Heat-Fab, Inc.	Saf-T Vent	Not required	RTV 106 or Dow Corning 732
Heat-Fab, Inc.	Saf-T Vent EZ Seal	Not required	Not Required
ProTech System, Inc.	FasNSeal	FSA-HFA3	Not Required
Flex-L International, Inc.	StaR-34	SRASFA3	GE-IS806
Z-Flex, Inc.	Z-Vent	O2SVSSLA2	GE, RTV 106

Heat-Fab Part Numbers for various items of vent system are listed in Slant/Fin Part List, Publication No. VSPH-10PL

▲ AL29-4C is a registered Trademark of Allegheny Ludlum Corp



VGH Series - Modulating Condensing Stainless Steel Gas Boiler

Wall Mount • Models VGH-299, VGH-399 and VGH-500



VGH

VGH SERIES

RATINGS AND PRICES

Model	Price	Input, MBH		Output MBH	AHRI Net Ratings Water, MBH	AFUE %	Thermal Efficiency %	Combustion Efficiency %	Max Vent Length Two Pipe	CH Connection Size	Gas Connection
		Min	Max								
VGH 299 CH	9200	59.0	295	274	238	95.1	-	-	228'	1 1/2"	1"
VGH 399 CH	11800	80.0	396	378	329	-	95.5	95.4	121'	1 1/2"	1"
VGH 500 CH	15600	98.0	500	476	414	-	95.1	94.5	481'	1 1/2"	1"

Standard Equipment

- Stainless Steel ASME heat exchanger
- Certified for use with Common venting system
- Unique locking wall bracket
- Boiler drain
- Condensate trap clean out & drain
- Built in 3 in 1 vent connector
- Control- Includes out door reset sensor
- 50 p.s.i relief valve
- Temp. and pressure gauge
- Gas shut-off valve



UNITED STATES DEPARTMENT OF ENERGY
2021 DOE COMPLIANT
with Energy Conservation Program

Optional Equipment

	Order Code	Add
ASME pressure relief valve (75psi)	432552000	167
4" Low Profile Vent Terminal 340-399 Flush Mount	818174000	77
External flow temp sensor (10kOhm@77°F)	817109000	115
Indirect tank sensor: 10kOhm@77°F	817110000	49
† Standard Circulator VGH299, 115V	817117000	1028
† Standard Circulator VGH399 & VGH500, 115V	817118000	1980
† High Efficiency ECM Circulator VGH 299/399/500, 115V	817116000	3514
IP module	817111000	761
External Ignition Transformer	817115000	239
Propane kit for VGH299	817112000	43
Propane kit for VGH399	817113000	43
Propane kit for VGH500	817114000	43
Safety Flow Switch Kit (Taco p/n IFSWSBF-1)	817106000	196
Mag Filter Dual XL	817131000	Call
Mag Flush Pro	817132000	Call
Heating System Cleaner	817133000	Call
Heating System Protector	817134000	Call
Computer Link and Programming Software Kit	817135000	Call
ASME CSD-1 Kit (Includes safety flow switch relief valve, CSD paperwork)	817136000	838

† Includes 1/2" Cast Iron Flange
Note: 230V Circulator - Call Factory (Available Soon)

Venting options: CPVC, Stainless Steel, PVC, Polypropylene
(Starter piece of CPVC included on VGH 399 Only)

DIMENSIONS

Dimensions/Weights				
Models	Height	Width	Depth	Product Weight
VGH 299 CH	33.3"	17.3"	20.9"	174 lbs.
	84.5 cm	44 cm	53 cm	(79 kg.)
VGH 399 CH	33.3"	17.3"	20.9"	183 lbs.
	84.5 cm	44 cm	53 cm	(83 kg.)
VGH 500 CH	33.3"	17.3"	20.9"	187 lbs.
	84.5 cm	44 cm	53 cm	(85 kg.)

- * Approved Antifreeze Products
FernoX, Alphill, Sentinel , X500, Rhomar, Rhogard
- * Boiler requires primary/secondary piping

For commercial applications, see page 31 for required controls

Introducing!

Slant/Fin
VGH
series boiler



GAS

HIGH EFFICIENCY

CHS
CHS SERIES

**CHS Series - Modulating Condensing
Stainless Steel Gas Boiler**

Wall Mount or Free Standing with optional floor stand



RATINGS AND PRICES

Model	List	C.S.A. Max Input NG/LP (MBH)	C.S.A. Min Input NG/LP (MBH)	D.O.E. Capacity (MBH)	Net AHRI (MBH)	A.F.U.E. %	Vent Diameter Inches	Max Vent Length NG/LP (Ft)	Approx. Water Content (Gal.)	Shipping Weight
CHS-85	4655	85/88	17/17.6	78	68	95	3/2*	150**	3.2	132
CHS-110	4866	108/113	21.6/22.6	99	86	95	3/2*	150**	3.2	133
CHS-154	5985	154	15.4	141	123	95	3	100	4.9	174
CHS-175	6605	175	31	163	142	95	3	100	4.9	176
CHS-200	6960	200	31	185	161	95	3	100	4.9	175
CHS-285	7681	285	28.5	263	228	95	3	150**	4.9	180
CHS-340	10885	340	39.9	324†	282	95.4 ¥	4	100	6.4	250
CHS-399	12092	399	79.8	380†	330	95.4 ¥	4	100	6.4	250

**Max length of 150' for 3" venting only † Gross output ¥ CHS-340 & CHS-399 efficiency is Thermal Efficiency • Reducer required

Standard Equipment

Stainless steel fire tube heat exchanger
Pre-assembled jacket
Stainless, metal fiber burner
Multi-functional LED control with built-in auto-diagnostics
Automatic Reset LWCO

Special spark ignition system
Pressure gauge
Air vent
Pressure relief valve (ASME) - 30 lbs.

Outdoor reset sensor
Condensate drain and trap
Wall hanging bracket
Field convertible to L.P. Gas – kit included

Optional Equipment

Order Code Add

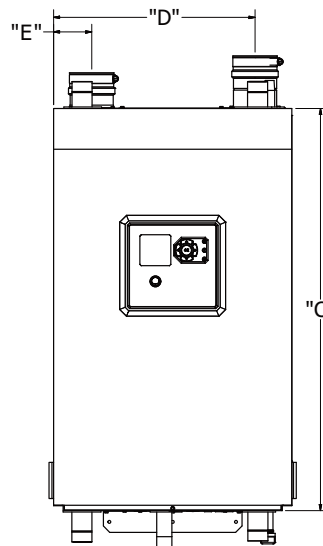
3" Low Profile Vent Terminal 85-250 Flush Mount	818172	68
4" Low Profile Vent Terminal 340-399 Flush Mount	818174	68
3" Concentric Vent Terminal 85-250	818173	244
4" Concentric Vent Terminal 340-399	818175	578
Storage Tank Sensor	818176	63
System / Pipe Sensor for cascading boilers	818146	49
Floor Stand CHS-85 thru CHS-250	818171	755
Floor Stand CHS-340 thru CHS-399	818169	755
Floor Stand Twinning Kit (For CHS-300 & 399 Common Stand)	818220	
CHS-340 & CHS-399 Only - Optional relief valve kit (Includes pressure gauge & relief valve)		
50 psi	818100	65
75 psi	818101	159



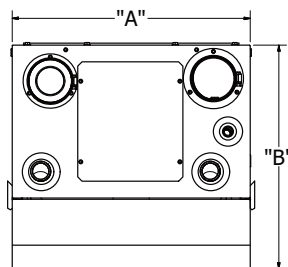
CHS Series Boiler

DIMENSIONS

MODEL	"A"	"B"	"C"	"D"	"E"
CHS-85	19 3/4	14 1/2	33 3/8	16 7/8	3 3/4
CHS-110					
CHS-154					
CHS-175	19 3/4	18 1/2	33 3/8	16 3/4	3
CHS-200					
CHS-285					
CHS-340	25 1/4	20	36 3/8	22 3/4	3 1/2
CHS-399					



CHS Venting Material
PVC, CPVC, Polypropylene or Stainless Steel



TOP

FRONT



5 year parts and labor warranty excludes 300-399 models



Hot Water Boilers

Packaged



Intrepid

TR SERIES

RATINGS AND PRICES

Model No.	P Packaged Boiler		PPT Packaged Boiler with provision for Tankless Htr.		PT Packaged Boiler with Tankless Htr.		Ratings for No. 2 Oil				Tankless Heater GPM‡	AHRI Chimney Size (in.x in.x ft.)	Thermal Efficiency %
	Trade Price	Ship Wt.	Trade Price	Ship Wt.	Trade Price	Ship Wt.	AHRI Firing Rate GPH*	D.O.E. Capacity (Btuh)	AHRI Net Rating† (MBH)	AFUE %			
TR-20	2805	392	2970	391	3077	405	0.75	89,000	77	85.10	2.20	8x8x15	—
TR-30H	3214	530	3333	529	3495	550	1.00	120,000	104	✓ 86.00	3.00	8x8x15	—
TR-30-1.10	3214	530	3333	529	3495	550	1.10 1.25	131,000 149,000	114 130	84.80 85.00	3.20 3.40	8x8x15 8x8x15	— —
TR-40H	3814	626	3930	625	4112	644	1.50	181,000	157	✓ 86.00	3.80	8x8x15	—
TR-40-1.60	3814	626	3990	625	4112	644	1.60 1.80	189,000 218,000	164 190	84.40 84.20	3.90 4.15	8x8x15 8x8x15	— —
TR-50H	4513	703	4660	702	4839	721	2.00	241,000	210	✓ 86.00	4.40	8x8x15	—
TR-50-2.10	4513	703	4660	702	4839	721	2.10 2.35	247,000 272,000§	215 237	84.00 82.70§	4.40 4.70	8x8x15 8x12x15	— 82.70
TR-60-2.60	5115	759	5260	758	5478	771	2.60 2.75	301,000§ 316,000§	262 275	82.70§ 82.10§	4.90 5.20	8x12x15 8x12x15	82.70 82.10
TR-70-3.10* (No Circulator)	5492	825	5685	824	5902	837	3.10	358,000§	311	82.40§	5.45	8x12x15	82.40

* TR-70 is less circulator.

Standard Equipment

	P	PPT	PT		P	PPT	PT
Pre-assembled cast-iron heat exchanger	X	X	X	Combination hi-limit control and circulator relay (TR-20 thru TR-60)	X		
Heavy Duty Jacket with insulation	X	X	X	Tankless water heater			X
Swing out door insulation and target wall	X	X	X	Cover plate instead of tankless heater		X	
Tridicator	X	X	X	Solid wall front section (no provision for tankless heater)	X		
Pressure relief valve (ASME) (in carton) ††, ¶	X	X	X	Control Features: Thermal targeting, LWCO function, Thermal pre-purge, LED display, Circulator relay		X	X
Flame retention oil burner with nozzle, primary relay and cadmium sulfide flame detector	X	X	X	Hi and lo-limit control (TR-70)	X	X	X
Circulator, Taco 007, with 1-1/4" flange (TR-20 thru TR-40); Taco 0010 with 1-1/2" flange (TR-50 thru TR-60) (No circulator supplied with TR-70)	X	X	X	Hi-limit control (TR-70)	X		
Draft regulator & Flue brush	X	X	X	Swing out door / Inspection door	X	X	X
Drain cock	X	X	X	Disconnect plug	X	X	X
Front mount service switch	X	X	X	Dial type setup w/dynamic display	X	X	X
Priority override for DHW	X	X	X	Low water cut-off		X	X

Optional Equipment

	Order Code	Add		Order Code	Add
Riello Burner:	TR-30	142	Taco 0010 circulator		92
	TR-40 and TR-50	695	Taco 110 1-1/4" circulator		128
# Two-stage fuel pump in place of single-stage fuel pump (not available with Riello burners)		94	B&G 100 1-1/4" circulator		155
Eliminate circulator from P and PT boiler ONLY:			Replace Taco 0010 circulator (for models TR-50 and TR-60 P or PT) with:		
1-1/4" (TR-20 thru TR-40 ONLY)	Deduct	144	Taco 110 1-1/4" circulator		41
1-1/2" (TR-50 and TR-60 ONLY)	Deduct	178	B&G 100 1-1/4" circulator		66
Replace Taco 007 1-1/4" circulator (for models TR-20 and TR-30 P or PT; TR-40 P or PT) with:			Extra for N.Y.C. BAR KIT (TR-60 and TR-70)		576
B&G NRF 22-1-1/4" circulator		N/C	Air package selection and prices, see page 22.		
Grundfos UPS 15-58F 1-1/4" circulator		N/C	Outdoor reset sensor kit	430423	55

† Net ratings are based on piping and pick-up allowance of 1.15. Slant/Fin should be consulted before selecting a boiler for installation having unusual piping and/or pick-up requirements. Ratings must be reduced by 4% at 2,000 feet elevation and an additional 4% for every additional 1,000 feet elevation over 2,000 feet.
 †† Boilers are factory equipped with 30 psi ASME relief valves. Boilers are rated for 50 psi working pressure.
 ‡ Tankless heater rating based on intermittent draw.

▲ Two-stage pump not available with Riello burners
 § AHRI gross output (Btuh) and combustion efficiency
 # Factory installed options.
 * Light oil, 140,000 Btu per gallon.
 ¶ "P" boilers with no provision for tankless heater are factory equipped with 30 psi ASME relief valves. Boilers are rated for 100 psi and may be ordered with 50 psi or 100 psi relief valves. Consult factory for price.

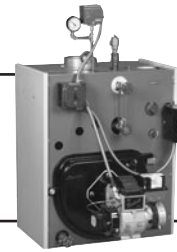
AVAILABLE INTREPID BURNERS			
	Beckett	Carlin	▲ Riello
TR-20	AFG	99FRD	—
TR-30	AFG	99FRD/EZ LF Pro-70-200	F-5
TR-30H	—	99FRD/EZ LF Pro-70-200	F-5
TR-40	AFG	99FRD/EZ 2 Pro-70-200	F-10
TR-40H	—	99FRD/EZ 2 Pro-70-200	F-10
TR-50	AFG	99FRD	F-10
TR-50H	—	99FRD	F-10
TR-60	375	102CRD	—
TR-70	375	102CRD	—

Riello burners are optional and have an add-on cost. See price above under optional equipment.

OIL

Intrepid TR SERIES

Steam Boilers Packaged



RATINGS AND PRICES

Model No.	PZ Packaged Steam Boiler		PZT Packaged Steam Boiler with Tankless Heater		Ratings for No. 2 Oil					Tankless Heater GPM‡	AHRI Chimney Size (in.x in.x ft.)	Thermal Efficiency %
	Trade Price	Ship Wt.	Trade Price	Ship Wt.	AHRI Firing Rate GPH*	D.O.E. Capacity (Btuh)	AHRI Net Rating† (MBH)	Net Rating¶ (Sq. Ft.)	AFUE %			
TR-30	3404	473	3800	493	1.10	130,000	98	421	✓ 84.10	3.00	8x8x15	—
TR-40H	3972	618	4371	638	1.50	176,000	132	558	✓ 84.00	3.40	8x8x15	—
TR-40	3972	618	4371	638	1.60	188,000	141	608	83.80	3.50	8x8x15	—
TR-50H	4692	651	5092	671	2.00	239,000	179	746	✓ 84.00	3.90	8x8x15	—
TR-50	4692	651	5092	671	2.10	245,000	184	796	83.40	4.00	8x8x15	—
TR-60	5294	737	5699	757	2.60	311,000§	233	971	85.10§	4.50	8x12x15	85.50
TR-70	5675	825	6075	845	3.10	362,000§	272	1129	84.30§	5.00	8x12x15	83.30

Standard Equipment

	PZ	PZT		PZ	PZT
Pre-assembled cast-iron heat exchanger	X	X	Low water cut-off, M & M PS-801 (installed)	X	X
Heavy Duty jacket with insulation	X	X	Tankless water heater		X
Swingout door, insulation blanket and target wall	X	X	Low limit control		X
Pressure relief valve (ASME) (in carton) ††	X	X	Cover plate instead of tankless heater	X	
Flame retention oil burner with nozzle, primary relay and cadmium sulfide flame detector	X	X	Pressuretrol with siphon (in carton)	X	X
Draft regulator / Flue brush	X	X	Swing out door / Inspection door	X	X
Drain cock	X	X	Disconnect plug	X	X
Front mounted service switch	X	X	Steam gauge and trimmings (in carton)	X	X
Pressure Gauge (30psi)	X	X	Glass gauge	X	X

Optional Equipment

For PZ and PZT Models	Order Code	Add
Pressure control, PA404A		83
# Two-stage fuel pump in place of single-stage fuel pump (not available with Riello burners)		94
M&M 67 LWCO instead of McDonnell PS-801		40
Water feeder-McDonnell & Miller WF 2-120 (for PS-801-120 electronic LWCO ONLY)	430131	483
Extra for N.Y.C. BAR KIT (LD-60 and LD-70)		576
Riello Burner:		142
TR-30		695
TR-40(H) and TR-50(H)		

† Net ratings are based on piping and pick-up allowance of 1.333. Slant/Fin should be consulted before selecting a boiler for installation having unusual piping and/or pick-up requirements. Ratings must be reduced by 4% at 2,000 feet elevation and an additional 4% for every additional 1,000 feet elevation over 2,000 feet.

¶ Net steam ratings in square feet based on emission rate of 240 Btuh/sq. ft.

‡ Tankless heater rating based on intermittent draw.
§ AHRI gross output (Btuh) and combustion efficiency.
Factory installed option.
†† Maximum working pressure, 15 psi steam.
* Light oil, 140,000 Btu per gallon.

AVAILABLE INTREPID BURNERS			
	Beckett	Carlin	▲ Riello
TR-30	AFG	99FRD/EZ LF Pro-70-200	F-5
TR-40	AFG	99FRD/EZ 2 Pro-70-200	F-10
TR-40H	—	99FRD/EZ 2 Pro-70-200	F-10
TR-50	AFG	99FRD	F-10
TR-50H	—	99FRD	F-10
TR-60	375	102CRD	—
TR-70	375	102CRD	—

Riello burners are optional and have an add-on cost. See price above under optional equipment.



Hot Water Boilers

Knocked-down Boiler/Burner Units

Intrepid

TR SERIES

NOTE: Models below are approved for use ONLY with oil burners described in Slant/Fin publication TR-42KB ("APPROVED OIL BURNERS" for K.D. boilers and K.D. boiler/burner units).
For each boiler ordered a matching burner must be also ordered.

RATINGS AND PRICES

Model No.	WU Knocked-down (Less burner)		Ratings for No. 2 Oil			Optional Tankless Heater GPM‡	AHRI Chimney Size (in.x in.x ft.)	AFUE %
	Trade Price	Ship Wt.	AHRI Firing Rate GPH*	D.O.E. Capacity (Btuh)	AHRI Net Rating† (MBH)			
TR-20	1906	376	0.75	89,000	77	2.20	8x8x15	85.10
TR-30-1.10	2307	463	1.10	131,000	114	3.20	8x8x15	84.80
			1.25	149,000	130	3.40	8x8x15	85.00
TR-40-1.60	2836	550	1.60	189,000	164	3.90	8x8x15	84.40
			1.80	218,000	190	4.15	8x8x15	84.20
TR-50-2.10	3537	657	2.10	247,000	215	4.40	8x8x15	84.00
			2.35	272,000§	237	4.70	8x12x15	82.70§
TR-60-2.60	4111	741	2.60	301,000§	262	4.90	8x8x15	82.70§
			2.75	316,000§	275	5.20	8x12x15	82.10§
TR-70-3.10	4649	807	3.10	358,000§	311	5.45	8x8x15	82.40§

Standard Equipment

Assembled sections
Jacket with insulation
(Swing out door insulation and target wall)
Tridicator
Pressure relief valve (ASME) ††
Draft regulator & Flue brush
Drain cock

Cover plate and gasket for tankless opening
(installed)
Combination hi-limit control and circulator relay
Burner mounting plate (installed)
Inspection door
Flue collector

Optional Equipment

Two-stage fuel pump in place of single-stage fuel pump
Extra for N.Y.C. Bar Kit (TR-60, TR-70)
Air package selection and prices, see page 22.
Outdoor reset sensor kit

Order Code Add

430423 55

94

576

Optional Controls**

High/low limit with circulator relay Hydro Level 3250 and well. For boilers with or without tankless heaters.

Order Code Add

430-424100 236

** Prices for optional controls above apply only when purchased with a boiler (one control per boiler) on the boiler purchase order.

- † Net ratings are based on piping and pick-up allowance of 1.15. Slant/Fin should be consulted before selecting a boiler for installation having unusual piping and/or pick-up requirements. Ratings must be reduced by 4% at 2,000 feet elevation and an additional 4% for every additional 1,000 feet elevation over 2,000 feet.
- †† Boilers are factory equipped with 30 psi ASME relief valves. Boilers are rated for 50 psi working pressure.
- ‡ Tankless heater rating based on intermittent draw.
- § AHRI gross output (Btuh) and thermal efficiency.
- # Factory installed options.
- * Light oil, 140,000 Btu per gallon.
- ¶ Beckett or Carlin burner is standard on all WU models.

Control Features:

- Thermal targeting, technology to conserve fuel
- LWCO function – Auto or manual reset
- Thermal pre-purge
- LED display for operational info
- Circulator relay – 3 function options

Note: For burner ordering information, see chart on page 15

OIL

Intrepid TR SERIES

Steam Boilers Knocked-down Boiler/Burner Units



NOTE: Models below are approved for use ONLY with oil burners described in Slant/Fin publication TR-42KB ("APPROVED OIL BURNERS" for K.D. boilers and K.D. boiler/burner units).
For each boiler ordered a matching burner must be also ordered.

RATINGS AND PRICES

Model No.	SU Knocked-down (Less burner)		Ratings for No. 2 Oil				Tankless Heater GPM‡	AHRI Chimney Size (in.x in.x ft.)	AFUE %
	Trade Price	Ship Wt.	AHRI Firing Rate GPH*	D.O.E. Capacity (Btuh)	AHRI Net Rating† (MBH)	Net Rating (Sq. Ft.)			
TR-30	2390	496	1.10	130,000	98	421	3.00	8x8x15	84.10
TR-40	2737	555	1.60	188,000	141	608	3.50	8x8x15	83.80
TR-50	3420	647	2.10	245,000	184	796	4.00	8x8x15	83.40
TR-60	3977	733	2.60	311,000 §	233	971	4.50	8x12x15	85.50§
TR-70	4325	807	3.10	362,000 §	272	1108	5.00	8x12x15	83.30§

Standard Equipment

Assembled sections
Jacket with insulation
Swingout door insulation blanket and target wall
Pressure relief valve (ASME) ††
Draft regulator & Flue brush
Drain cock
Pressure Gauge (30psi)

Cover plate and gasket for tankless opening (installed)
Pressuretrol with siphon
Burner mounting plate (installed)
Inspection door assembly
Steam pressure gauge
Water level gauge glass set

Optional Equipment

	Order Code	Add
# Extra for two-stage fuel pump in place of single-stage fuel pump (Not available on Riello)		94
Low limit control and well for tankless water heater L4006A	432-269	103
Low water cut-off, float type No. 67SFL McDonnell. Fittings for complete installation are included	432-270	311
Alternate low water cut-off No. PS 801-120 McDonnell electronic low water cut-off	430-130	270
Pressure cut-out with siphon. Included with SU, EXTRA for SKD	400-117	120
Extra for N.Y.C. Bar Kit (TR-60, TR-70)	111-907	576

† Net ratings are based on piping and pick-up allowance of 1.15. Slant/Fin should be consulted before selecting a boiler for installation having unusual piping and/or pick-up requirements. Ratings must be reduced by 4% at 2,000 feet elevation and an additional 4% for every additional 1,000 feet elevation over 2,000 feet.

†† Boilers are factory equipped with 15 psi ASME relief valves.

‡ Tankless heater rating based on intermittent draw.

§ AHRI gross output (Btuh) and thermal efficiency.

Factory installed options.

* Light oil, 140,000 Btu per gallon.

¶ Beckett or Carlin burner is standard on all SU models.

Burner Ordering for Hot Water and Steam Boilers

(Must order 1 burner for each boiler ordered)

BOILER	BURNER	ITEM #	TYPE	PRICE
TR-20	Beckett	433062000	AFG SF	694
	Carlin	433052000	99 SF	694
TR-30	Beckett	433063000	AFG SF	694
	Carlin	433053000	99 SF	694
	Carlin EZ LF Pro-70-200	432843142	EZ LF Pro	694
	Riello	433113000	F-5 SF	835
TR-40	Beckett	433064000	AFG SF	694
	Carlin	433054000	99 SF	694
	Carlin EZ 2 Pro-70-200	432848142	EZ 2 Pro	694
	Riello	433114000	F-10 SF	1388
TR-50	Beckett	433065000	AFG SF	694
	Carlin	433055000	99 SF	694
	Riello	433115000	F-10 SF	1388
TR-60	Beckett	433066000	375	694
	Carlin	433056000	102CRD	694
TR-70	Beckett	433067000	375	694
	Carlin	433057000	102CRD	694



Hot Water Boilers

Packaged

Intrepid

TRDV SERIES

RATINGS AND PRICES



Model No.	PT Packaged Boiler with Tankless Htr.		Ratings for No. 2 Oil					Tankless Heater GPM‡
	Trade Price	Ship Wt.	AHRI Firing Rate GPH*	AHRI Burner Capacity Oil Input	D.O.E. Capacity (Btuh)	AHRI Net Rating† (MBH)	AFUE %	
TRDV-30-0.85	3789	488	0.85	119,000	104,000	90	✓ 87.2	3.0

- Control Features:
- Thermal targeting, technology to conserve fuel
 - LWCO function – Auto or manual reset
 - Thermal pre-purge
 - LED display for operational info
 - Circulator relay – 3 function options

Standard Equipment

	PT		PT
Pre-assembled cast-iron heat exchanger	X	Flue brush	X
Heavy duty jacket with insulation	X	Combination hi-limit control and circulator relay	
Combustion chamber (Swing out door insulation and target wall)	X	Tankless water heater	X
Tridicator	X	Combination hi and lo-limit control circulator relay	X
Pressure relief valve (ASME) (in carton) ††	X	Swing out door	X
Flame retention oil burner with nozzle, primary relay and cadmium sulfide flame detector	X	Disconnect plug	X
Circulator, Taco 007, with 1-1/4" flange	X	Dial type setup w/dynamic display	X
Drain cock	X	Low water cut-off	X
Front mount service switch	X		
Priority override for DHW	X		

Additional Equipment

	Order Code	Add		Order Code	Add
Eliminate circulator from P and PT boiler ONLY: 1-1/4"	Deduct	144	Replace Taco 007 1-1/4" circulator with: B&G NRF 22-1-1/4" circulator Grundfos UPS 15-58F 1-1/4" circulator Taco 0010 circulator Taco 110 1-1/4" circulator B&G 100 1-1/4" circulator		N/C N/C 92 128 155
VENT KITS:			Air package selection and prices, see page 22.		
TRDV-10 (ft)	470-188	1324	Outdoor reset sensor kit	430-423	55
TRDV-15 (ft)	470-190	1542			
Kit Includes: Vent terminal, appliance adapter, 2 cover sleeves, vacuum relief valve and flexible vent pipe(boxed separately). (Fresh air intake tubing supplied locally)					

- † Net ratings are based on piping and pick-up allowance of 1.15. Slant/Fin should be consulted before selecting a boiler for installation having unusual piping and/or pick-up requirements. Ratings must be reduced by 4% at 2,000 feet elevation and an additional 4% for every additional 1,000 feet elevation over 2,000 feet.
- †† Boilers are factory equipped with 30 psi ASME relief valves. Boilers are rated for 50 psi working pressure.
- ‡ Tankless heater rating based on intermittent draw.
- Δ Two-stage pump not available with Riello burners
- # Factory installed options.
- * Light oil, 140,000 Btu per gallon.

AVAILABLE TRDV BURNERS	
	Riello
TRDV-30	BF-5

OIL THREE PASS • HIGH EFFICIENCY

Q3
SERIES

Q3 Hot Water Boiler
Jacketed & Assembled



UNITED STATES
DEPARTMENT OF ENERGY
2021 DOE COMPLIANT
with Energy Conservation Program

RATINGS AND PRICES

With Burner, less circulator

Model	Trade Price	No. of Sec.	Boiler Input Rate (MBH)	Heating Capacity (MBH)	Net AHRI Rating, Water (MBH)	Chimney Size	Boiler Flue	Firing Rate (GPH)	AFUE %
Q3-4	2971	4	105	92	80	8" x 8" x 15'	5" (13 cm)	0.75	87.0%
Q3-5	3339	5	140	123	107	8" x 8" x 15'	5" (13 cm)	1.00	87.0%
Q3-6	3592	6	182	160	139	8" x 8" x 15'	5" (13 cm)	1.30	87.0%
Q3-7	3846	7	231	202	176	8" x 8" x 15'	6" (15 cm)	1.65	87.0%

All above models are Energy Star Certified.

MBH =1000 Btu/hr (British Thermal Units Per Hour). Heating Capacity and AFUE based on 13.1% CO2 (13.2% CO2 at 1.65 GPH), -0.02" w.c. draft in breech, and # 1 smoke or less. Testing is done in accordance with U.S. DOE (Department of Energy) test procedure. Net AHRI ratings shown are based on piping and pickup factor of 15% in accordance with AHRI Standard as published by Hydronics Institute. Contact Technical Support before selecting boiler for installations having unusual piping and pickup requirements, such as intermittent system operation, extensive piping systems, etc
GPH = Gallons per hour.

Standard Equipment

Standard control included and domestic hot water priority setting available.

		Available Options:	Order Code	Price
Burner - Riello	Tridicator	Indirect Fired Storage Water Heater (p.21)		
Heavy Duty Jacket	Burner Disconnect Plug	Taco 007 1-1/4" Circulator	470093	138
Swing Out Reversible Door	Drain Valve	Grundfos UPS 15-58F 1-1/4" Circulator	470095	138
Sight Glass	Draft Regulator	B & G NRF 22 1-1/4" Circulator	470097	138
Pressure Relief Valve	Plbg. & Ftg. Package	Outdoor reset sensor kit	430423	55.12
Flue Brush	Side Mounted Service Switch	Air Package Selection (p.22)		

Control Includes

Aquastat
Sensor
On/Off Switch

Control Features:
• Thermal targeting technology to conserve fuel
• LWCO function – Auto or manual reset
• Thermal pre-purge
• LED display for operational info
• Circulator relay – 3 function options

RATINGS AND PRICES

Direct Vent, less circulator with Burner

Standard equipment control same as Chimney Vented Boiler.

Model	Trade Price	No. of Sec.	Boiler Input Rate (MBH)	Heating Capacity (MBH)	Net AHRI Rating, Water (MBH)	Boiler Flue	Firing Rate (GPH)	AFUE %
Q3-4-DV	4384	4	105	92	80	5" (13 cm)	0.75	87.0%
Q3-5-DV	4728	5	140	123	107	5" (13 cm)	1.00	87.0%
Q3-6-DV	4982	6	182	160	139	5" (13 cm)	1.30	87.0%

DV boiler includes: Boiler, Direct Vent Burner and Terminal Kit. (Total crate plus 3 boxes)

Vent Terminal and Assembly Kit (2 boxes) Includes Vent Terminal, plus:
4" X 15 Ft. Flexible Vent Pipe
Appliance Adapter
Terminal Adapter
80 ml Tube Gasket Maker

REPLACEMENT BURNERS

(Sold as Replacement Parts Only – Riello Burners Only)

Model	P/N's	List
Q3-4	473034000	693.68
Q3-5	473035000	700.96
Q3-6	473036000	700.96
Q3-7	473037000	700.96
Q3-4-DV	473044000	900.64
Q3-5-DV	473045000	900.64
Q3-6-DV	473046000	900.64



Hot Water Boilers

Packaged

OIL

XL-2000

XL SERIES

RATINGS AND PRICES

Model No.	P Packaged Boiler		AHRI Firing Rate GPH*	Ratings for No. 2 Oil		AFUE %	AHRI Chimney Size (in.x in.x ft.)
	Trade Price	Ship Wt.		D.O.E. Capacity (Btuh)	AHRI Net Rating† (MBH)		
XL-30-1.00	2901	386	1.00	121,000	105	85.00	8x8x15
	2901	386	1.15	138,000	120	84.10	8x8x15

Standard Equipment

Pre-assembled cast-iron heat exchanger
 Jacket with insulation
 Combustion chamber (burner mounting door insulation and target wall)
 Tridicator
 Pressure relief valve (ASME) (in carton) ‡
 Flame retention oil burner with nozzle, primary relay and cadmium sulfide flame detector
 Circulator; Taco-007 with 1-1/4" flange for XL-30

Circulator flange/nipple assembly (in carton)
 Draft regulator (in carton)
 Drain cock
 Flue brush
 Combination hi-limit control and circulator relay
 Swing-out/removable burner door
 Front Mount Service Switch
 Inspection door

Optional Equipment

	Order Code	Add	Order Code	Add
§ Two-stage fuel pump in place of single-stage fuel pump (Not available with Riello burners)		94		
Eliminate circulator	Deduct	137		
Riello R-35		N/C		
Riello F-5		142		
Replace Taco 007 circulator with:				
B&G NRF22 circulator				N/C
Grundfos UPS 15-58F circulator				N/C
Taco 0010 circulator with 1-1/2" flange				92
Taco 110 circulator with 1-1/2" flange ¶				128
B&G 100 circulator with 1-1/2" flange¶				155
Air package selection and prices, see page 22				

* Light oil, 140,000 Btu per gallon.

† Net ratings are based on piping and pick-up allowance of 1.15. Slant/Fin should be consulted before selecting a boiler for installation having unusual piping and/or pick-up requirements. Ratings must be reduced by 4% at 2,000 feet elevation and an additional 4% for every additional 1,000 feet elevation over 2,000 feet.

‡ Boilers are factory equipped with 30 psi ASME relief valves. Boilers are rated for 100 psi and may be ordered with 50 psi or 100 psi relief valves. Consult factory for price.

§ Factory installed options.

¶ Taco 110 and B&G 100 can only be used on return.

AVAILABLE XL-2000 BURNERS				
	Beckett	Carlin	Riello	Riello
XL-30	AFG	99FRD	R-35	F-5

ELECTRIC

EH
SERIES

Monitron Boilers



RATINGS AND PRICES

Model No.	With Sequential Controls and Manual Element Switches		Ship Wt.	KW		No. of Elements	D.O.E Capacity Btu	
	240/208V† Single Phase Trade Price	208V WYE 240V delta, 3-phase Trade Price		240V‡	208V‡		240V	208V
EH-8-S2	2058	—	144	8	6	2	27,000	21,000
EH-10-S2	2066	—	144	10	7.5	2	34,000	26,000
EH-12-S2	2306	2677	145	12	9	3	41,000	31,000
EH-16-S2	2367	2712	146	16	12	4	55,000	41,000
EH-20-S2	2560	2776	147	20	15	4	68,000	51,000
EH-24-S2	2742	2831	148	24	18	5	82,000	62,000
EH-28-S2	2830	2911	148	28	21	6	96,000	72,000
EH-32-S2	2998	3078	150	32	24	7	109,000	82,000
EH-40-S2	3125	3203	150	40	30	8	137,000	103,000

**240 VOLT DELTA
3 PHASE AVAILABLE**

‡ 120V/240V. 120V/208V. Voltage or any line to ground cannot exceed 125 VAC.
† 120V/208V WYE. Voltage of any line to ground cannot exceed 125 VAC.

Specify model as follows: Model number + single or 3-phase
To specify single phase, add suffix 135-S2 to model number.
To specify three phase, add suffix 345-S2 to model number.

EXAMPLE:
EH-20-135-S2 = 20KW boiler for 240/208V, single phase
EH-20-345-S2 = 20KW boiler for 208V WYE, 3-phase and 240V delta, 3-phase

Unless specified, all orders will be shipped as single phase.

Standard Equipment

Cast-iron heat exchanger
U.L. listed U.S. and Canada
Terminal blocks for circulator, thermostat, flow switch and for zone valve transformer
Sequencer*
Complete jacketing
Circuit breaker for circulator and control circuit

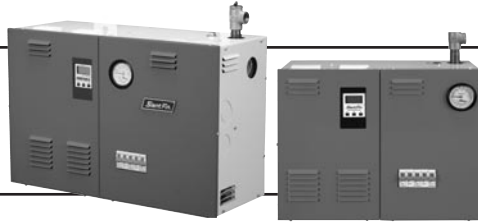
Altitude pressure and temperature gauge
Safety relief valve A.S.M.E 30 psi† (unmounted)
Circulatory relay and heater contactors
Circuit breaker (one or two heaters per breaker)
Drain cock, 3/4" (packed separately)
Built-in air separator

Optional Equipment

	Order Code	Add
Flow switch (required on any electric boiler)		
Model EH-8S through EH-32S (FS43T3)	790-338	470
Model EH-40S (FS8W)	790-337	352

* For all models except EH8S and EH10S which have one bank of two heater elements and do not require a sequencer.
† Boilers are factory equipped with 30 psi A.S.M.E. relief valves. Boilers are rated for 50 psi working pressure.

NOTE: Pipe tappings on supply and return are 1-1/4" NPT.



**Monitron
Deluxe Series**

**EH-M2
EH-M3
SERIES**

RATINGS AND PRICES

Model No.	With multi-stage EM-10 Electronic Boiler Control		Ship Wt.	KW		No. of Elements	D.O.E. Capacity Btu	
	240/208V‡	208V WYE/240V Delta †		240V‡	208V‡		240V	208V
	Single Phase Trade Price	3 Phase Trade Price						
EH-8M3	2027	—	96	8	6	2	27,000	21,000
EH-10M3	2069	—	96	10	7.5	2	34,000	26,000
EH-12M3	2367	2677	96	12	9	3	41,000	31,000
EH-16M3	2453	2774	96	16	12	4	55,000	41,000
EH-20M3	2583	2998	96	20	15	4	68,000	51,000
EH-24M2	2940	3258	148	24	18	5	82,000	62,000
EH-28M2	3276	3475	148	28	21	6	96,000	72,000
EH-32M2	3327	3537	150	32	24	7	109,000	82,000
EH-40M2	3401	3611	150	40	30	8	137,000	103,000

‡ 120V/240V. 120V/208V. Voltage or any line to ground cannot exceed 125 VAC.

† 120V/240V WYE.

† 120V/208V WYE. Voltage of any line to ground cannot exceed 125 VAC.

Unless specified, all orders will be shipped as single phase.

Standard Equipment

Cast-iron heat exchanger
 Up to 4 stage EM-10 Electronic Boiler Control
 U.L. listed U.S. and Canada
 Terminal strip for circulator, thermostat, flow switch and for other sensors
 Complete jacketing
 Circuit breaker for circulator and control circuit
 Altitude pressure and temperature gauge

Safety relief valve A.S.M.E 30 psi¶ (unmounted)
 Circulatory relay and heater contactors
 Circuit breaker (one or two heaters per breaker)
 Drain cock, 3/4" (packed separately)
 Built-in air separator
 Control stages boiler:
 – 8 through 20 kw (2 stage)
 – 24 through 28 kw (3 stage)
 – 32 through 40 kw (4 stage)

Optional Equipment

	Order Code	Add
Flow switch (required on any electric boiler)		
Model EH-24M2 through EH-32M2 (FS43T3-1)	790-338	470
Model EH-8M3 through EH-20M3 (FS43T3-1)	790-338	470
Model EH-40M2 (FS8W)	790-337	352
Mode 3 & 5 Sensor (Water) 96" Lead	790-400	28

¶ Boilers are factory equipped with 30 psi A.S.M.E. relief valves. Boilers are rated for 50 psi working pressure.

NOTE: Pipe tappings on supply and return are 1-1/4" NPT.

Domestic Hot Water



Indirect-Fired Storage Water Heater

RATINGS AND PRICES

Heater Model	Trade Price	Ship Weight	Order Code	Capacity	1st hour ratings		Required Boiler Rating @ 180°F	
					at 140°F (90°F ΔT)	at 120°F (70°F ΔT)	BTU/Hr.	GPM
HWT-40	1789	124 lbs.	664-240	40 gal.	188 gph	233 gph	120,000	10
HWT-60	2001	143 lbs.	664-241	55 gal.	225 gph	277 gph	140,000	10
HWT-80	2668	243 lbs.	664-242	79 gal.	295 gph	363 gph	180,000	14
HWT-120	4236	355 lbs.	664-243	119 gal.	376 gph	460 gph	220,000	14

* Rating based on 77° F rise with 58° F inlet potable water. Non stock item F.O.B. Ridgewood, NY

CONNECTIONS

DESCRIPTION	MODEL			
	HWT-40	HWT-60	HWT-80	HWT-120
TEMP. & PRESS. RELIEF VALVE	3/4"	3/4"	1"	1"
DOMESTIC HOT WATER OUTLET	3/4"	3/4"	1"	1" MPT
DOMESTIC COLD WATER INLET	3/4"	3/4"	1"	1" MPT
BOILER WATER OUTLET (RETURN)	1"	1"	1"	1"
CONTROL	1/2"	1/2"	1/2"	1/2"
BOILER WATER INLET (SUPPLY)	1"	1"	1"	1"
RECIRCULATION (HWT-80)	-	-	3/4"	3/4"

Standard Equipment

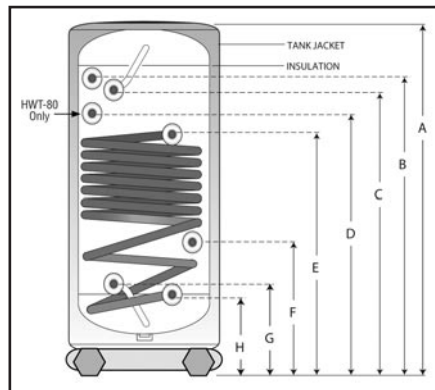
Carbon steel tank with oven glazed titanium glass for added strength & durability
 Over sized coil guarantees superior heat transfer
 7 year warranty
 Temperature control

NOTES:

- All fittings are female NPT thread connections, except for domestic hot and cold on the HWT-120.
- HWT-120 supplied with adapter to increase from 1" male to 1-1/4" female, for domestic hot and cold.
- HWT-120 has inspection port (with access near bottom of tank for removal of any sediment buildup).

PHYSICAL SPECIFICATIONS

MODEL	DIAMETER OF TANK	VOLUME (Gallons)	HEIGHT TO CONNECTION (Inches)								COIL SURFACE (Sq. Ft.)	WEIGHT (Lbs.)		
			A	B	C	D	E	F	G	H		NET	SHIPPING	FILLED
HWT-40	20"	40	45	37-1/4	35-5/8	N/A	35	20	10-7/16	8-7/8	14	116	124	449
HWT-60	20"	55	58	49-5/8	48	N/A	35	20	10-7/16	8-7/8	14	118	143	576
HWT-80	22"	79	71	61-1/2	61-1/4	47-7/8	54-5/8	40-1/4	10-7/8	10-1/4	26	232	243	737
HWT-120	28"	119	68	58-1/4	68	48-7/16	42	33-7/8	13	8-7/8	26	333	355	1324



KEY

- A-TANK TOP
- B-TEMP. & PRESS. RELIEF VALVE
- C-DOMESTIC HOT WATER OUTLET
- D-RECIRCULATION(HWT-80)
- E-BOILER WATER INLET(SUPPLY)
- F-CONTROL
- G-DOMESTIC COLD WATER INLET
- H-BOILER WATER OUTLET(RETURN)



Replacement Vent Dampers

For current and past models



Note: Vent damper part numbers do not include harness.

DESCRIPTION	USED ON	PART #	TRADE PRICE
4" Damper	S-34, S-60, SE-70	412-704-040	263
5" Damper	S-90, SE-105, SE-140	412-705-040	294
	GG-75H, GXH-105, GXHA-100		
6" Damper	S-120, SE-175, SE-210	412-706-040	294
	GG-100H to GG-150H, GXH-125, GXHA-120, GXHA-160		
	SX-150		
7" Damper	SE-245, SX-180, SX-210	412-707-040	301
	S-150		
	GG-175H, GG-200 to 225H, GXH-150 to 210, GXH-230 to 275, GXHA-200		
8" Damper	GG-250H to 275H, GG-300 to 325, GX-225 to GX-250	412-708-040	301
9" Damper	GXH-300H, GG-350, GG-350H, GG-375	412-709-040	301
10" Damper	GG-375H, GG399H	412-710-040	301

Air Packages For Residential Boilers*

Packaged Water Boiler

Boiler Models								Air Package Number	Ship Wt.	Order Code	Trade Price
Sentinel	Sentry		Galaxy	XL-2000	Victory & Victory II	Intrepid	Monitron				
SE-105	SE-70 S-60	S-34 S-120	S-90		VSPH-90, VSPH-120	TR-20	EH8-24	112 (15)†	8 lbs.	412-440	149
SE-140 SE-175 SE-210	S-150			XL-30	VSPH-150 VSPH-180	TR-30 TRDV-30	EH28-40	113 (30)†	10 lbs.	412-441	174
			GG-250P GG-275P GG-300P		GG-350P GG-375P	TR-40 TR-50 TR-60		114 (60)†	14 lbs.	412-442	342
			GG-399P			TR-70 (req. 2)		113 (qty:2)	10 lbs. ea.	412-441	174

Packaged Water Boiler with tankless heater

		GXH-105PT GXH-125PT GXH-150PT	GXH-170PT GXH-190PT			TR-30 TR-40		112	8 lbs.	412-440	149
		GXH-250PT GXH-300PT	GXH-275PT			TR-50 TR-60 TR-70		113	10 lbs.	412-441	174

*Air package consists of a diaphragm expansion tank, automatic fill valve and pressure reducing valve, and automatic float air vent.

† Expansion tank size.

Air package selection based on normal water content using Slant/Fin boilers with hydronic baseboard.
For systems with unusually high water content, consult factory.

GAS

Caravan GGT & GGHT SERIES

Hot Water Modular Boilers



RATINGS AND PRICES 100 psi Maximum Working Pressure (SEE NOTE 1)

INTERMITTENT PILOT IGNITION (IID) MODELS

Model No. *	ASME Trade Price	Ship Wt.	No. of Heating Modules	Module Model No.	Ratings for Natural and L.P. Propane Gases				Thermal Efficiency %
					C.S.A. Input (MBH)	Gross. Output (MBH)	AHRI Net Output (MBH) †	Net Rating (Sq. Ft.) Water ‡	
GGT-600E	6906	1156	2	GG-300ES	600	487	423	2814	81.10
GGHT-700E [¢]	7910	1300	2	GG-350HES	700	570	505	3306	81.40
GGHT-750E	8017	1300	2	GG-375HES	750	607	528	3506	80.90
GGHT-800E	8136	1300	2	GG-399HES	798	643	569	3734	80.60
GGT-900E	10239	1734	3	GG-300ES	900	729	634	4221	81.10
GGHT-1050E [¢]	11676	1950	3	GG-350HES	1050	855	758	4959	81.40
GGHT-1125E	11733	1950	3	GG-375HES	1125	910	791	5259	80.90
GGHT-1200E	11925	1950	3	GG-399HES	1197	965	839	5601	80.60
GGT-1200E	13546	2312	4	GG-300ES	1200	972	845	5628	81.10
GGHT-1400E [¢]	15532	2600	4	GG-350HES	1400	1140	1010	6612	81.40
GGHT-1500E	15641	2600	4	GG-375HES	1500	1213	1055	7012	80.90
GGT-1500E	16917	2890	5	GG-300ES	1500	1215	1057	7035	81.10
GGHT-1600E	16109	2600	4	GG-399HES	1596	1289	1137	7468	80.60
GGHT-1750E [¢]	19389	3250	5	GG-350HES	1750	1424	1263	8265	81.40
GGHT-1875E	19551	3250	5	GG-375HES	1875	1517	1319	8765	80.90
GGHT-2000E	19875	3250	5	GG-399HES	1995	1612	1422	9335	80.60
GGHT-2100E [¢]	23258	3900	6	GG-350HES	2100	1709	1516	9918	81.40
GGHT-2250E	23259	3900	6	GG-375HES	2250	1820	1583	10518	80.90
GGHT-2400E	23643	3900	6	GG-399HES	2394	1929	1706	11202	80.60
GGHT-2450E [¢]	26999	4550	7	GG-350HES	2450	1994	1777	11571	81.40
GGHT-2625E	27135	4550	7	GG-375HES	2625	2124	1847	12271	80.90
GGHT-2800E	27585	4550	7	GG-399HES	2793	2251	1957	13069	80.60
GGHT-2800AE [¢]	30702	5200	8	GG-350HES	2800	2279	1982	13224	81.40
GGHT-3000E	31010	5200	8	GG-375HES	3000	2427	2110	14024	80.90
GGHT-3150E [¢]	34367	5850	9	GG-350HES	3150	2564	2230	14877	81.40
GGHT-3200E	31528	5200	8	GG-399HES	3192	2573	2237	14936	80.60
GGHT-3375E	34888	5850	9	GG-375HES	3375	2730	2374	15777	80.90
GGHT-3500E [¢]	37994	6500	10	GG-350HES	3500	2849	2477	16530	81.40
GGHT-3600E	35464	5850	9	GG-399HES	3591	2894	2517	16803	80.60
GGHT-3750E	38515	6500	10	GG-375HES	3750	3034	2638	17530	80.90
GGHT-4000E	39163	6500	10	GG-399HES	3990	3216	2797	18670	80.60

ASME trade price includes equipment to meet ASME requirements for individual modules.

FOR LARGER SIZES, USE MULTIPLES OF THE ABOVE.

- * Specify gas by name, "Natural" or "Propane".
 - ** Factory installed option.
 - † Net ratings are based on piping and pick-up allowance of 1.15. Slant/Fin should be consulted before selecting a boiler for installation having unusual piping and/or pick-up requirements. Ratings must be reduced by 4% at 2,000 feet elevation and an additional 4% for every additional 1,000 feet elevation over 2,000 feet.
 - ‡ Net ratings in square feet based on emission rate of 150 Btu/Sq. ft.
 - †† Consists of 3" control header with 2 wells and temperature and pressure gauge. Specify operating pressure.
 - ¢ For use with natural gas. For Propane (L.P.) gas consult factory.
- Modules in excess of 10 should be piped in parallel in two or more batteries. For dimensional specifications, refer to Publication number CG-10HWG.

NOTE 1:
Specify pressure relief setting. Relief valve is available with 30, 50, 75 or 100 psi.

SINGLE MODULES

Model No. *	ASME Trade Price	Ship Wt.	C.S.A. Input (MBH)	Gross. Output (MBH)	AHRI Net Output (MBH) †	Net Rating (Sq. Ft.) Water ‡	Thermal Efficiency %
GG-300ES	3696	578	300	243	211	1407	81.1
GG-350HES [¢]	4153	650	350	285	253	1653	81.4
GG-375HES	4274	650	375	303	263	1753	80.9
GG-399HES	4434	650	399	322	284	1867	80.6

Standard Equipment

One per module:
Pre-assembled heat exchanger with built-in air separator
Insulated base
Extended heavy-duty jacket
Flue collector, stainless steel gas burner, gas orifice and manifold assembly
Module pressure and temperature gauge (unmounted)

Pressure relief valve, ASME (unmounted). Specify 30, 50 or 100 psi
Draft hood (unmounted)
Hi-limit control, auto reset
Drain cock (unmounted)
Control header (unmounted, one per system) ††
System pressure and temperature gauge (unmounted, one per system)

Optional Equipment

ASME REQUIRED SYSTEM CONTROLS (one per bank) order separately:

- Manual reset system low water cut-off
- Manual reset hi-limit

Headers (supply and return sets)

**†† For L.P. Propane gas factory, for IID price per module. Specify propane gas.

- Vent damper
- External tankless heaters
- Control systems

see page 30.
see page 30.
see page 29.

see page 29.
see page 30.
see page 30.

Order Code

Add

GAS

HIGH EFFICIENCY

VGH
VICTORY VGH SERIES
MULTIPLE BOILERS

**VGH Series - Modulating Condensing
Multiple Gas Boilers (Commercial)**
Efficiency up to 95% (Min. Input)

Wall Mount or
Standing with
optional
floor stand



RATINGS AND PRICES – MULTIPLE BOILERS

No. of Heating Boilers	Boiler Model	Ship Wt.	Input BTU/HR		Gross Output (MBH)	Net Rating (Water) (MBH)†
			Max	Min	Max Input	Max Input
2	VGH-299	395	295	59.0	548.0	476.0
2	VGH-399	415	396	80.0	756.0	658.0
2	VGH-500	425	500	98.0	952.0	828.0
3	VGH-299	580	897	59.0	822.0	714.0
3	VGH-399	610	1197	80.0	1134.0	987.0
3	VGH-500	625	1500	98.0	1428.0	1242.0
4	VGH-299	765	1196	59.0	1096.0	952.0
4	VGH-399	805	1596	80.0	1512.0	1316.0
4	VGH-500	825	2000	98.0	1904.0	1656.0
5	VGH-299	950	1495	59.0	1370.0	1190.0
5	VGH-399	1000	1995	80.0	1890.0	1645.0
5	VGH-500	1025	2500	98.0	2380.0	2070.0
6	VGH-299	1135	1794	59.0	1644.0	1428.0
6	VGH-399	1195	2394	80.0	2268.0	1974.0
6	VGH-500	1225	3000	98.0	2856.0	2484.0
7	VGH-299	1320	2093	59.0	1918.0	1666.0
7	VGH-399	1390	2793	80.0	2646.0	2303.0
7	VGH-500	1425	3500	98.0	3332.0	2898.0
8	VGH-299	1505	2392	59.0	2192.0	1904.0
8	VGH-399	1585	3192	80.0	3024.0	2632.0
8	VGH-500	1625	4000	98.0	3808.0	3312.0
9	VGH-299	1690	2691	59.0	2466.0	2142.0
9	VGH-399	1780	3591	80.0	3402.0	2961.0
9	VGH-500	1825	4500	98.0	4284.0	3726.0
10	VGH-299	1875	2990	59.0	2740.0	2380.0
10	VGH-399	1975	3990	80.0	3780.0	3290.0
10	VGH-500	2025	5000	98.0	4760.0	4140.0

**95% +
Thermal
Efficiency**

Racking System
and other Accessories
Coming Soon!



Standard Equipment

- Stainless Steel ASME heat exchanger
- Certified for use with Common venting system
- Unique locking wall bracket
- Boiler drain
- Condensate trap clean out & drain
- Built in 3 in 1 vent connector
- Control- Includes out door reset sensor
- 50 p.s.i relief valve
- Temp. and pressure gauge
- Gas shut-off valve

SINGLE MODULES

*Cascade control up to 16 boilers

Model	Price	Input, MBH		Output MBH	AHRI Net Ratings Water, MBH	AFUE %	Thermal Efficiency %	Combustion Efficiency %	Max Vent Length Two Pipe	CH Connection Size	Gas Connection
		Min	Max								
VGH 299 CH	9200	59.0	295	274	238	95.1	-	-	228'	1 1/2"	1"
VGH 399 CH	11800	80.0	396	378	329	-	95.5	95.4	121'	1 1/2"	1"
VGH 500 CH	15600	98.0	500	476	414	-	95.1	94.5	481'	1 1/2"	1"

* Approved Antifreeze Products
Fernox, Alphill, Sentinel , X500, Rhomar, Rhogard

Venting options: CPVC, Stainless Steel, PVC, Polypropylene, Duravent Common Venting (Starter piece of CPVC included on VGH 399 Only)

DIMENSIONS

Dimensions/Weights				
Models	Height	Width	Depth	Product Weight
VGH 299 CH	33.3" 84.5 cm	17.3" 44 cm	20.9" 53 cm	174 lbs. (79 kg.)
VGH 399 CH	33.3" 84.5 cm	17.3" 44 cm	20.9" 53 cm	183 lbs. (83 kg.)
VGH 500 CH	33.3" 84.5 cm	17.3" 44 cm	20.9" 53 cm	187 lbs. (85 kg.)

Optional Equipment

	Order Code	Add		Order Code	Add
ASME pressure relief valve (75psi)	432552000	167	Propane kit for VGH399	817113000	43
4" Low Profile Vent Terminal 340-399 Flush Mount	818174000	77	Propane kit for VGH500	817114000	43
External flow temp sensor (10kOhm@77°F)	817109000	115	Safety Flow Switch Kit (Taco p/n IFSWSBF-1)	817106000	196
Indirect tank sensor: 10kOhm@77°F	817110000	49	Mag Filter Dual XL	817131000	Call
Standard Circulator VGH299, 115V	817117000	1028	Mag Flush Pro	817132000	Call
Standard Circulator VGH399 & VGH500, 115V	817118000	1980	Heating System Cleaner	817133000	Call
High Efficiency ECM Circulator VGH 299/399/500, 115V	817116000	3514	Heating System Protector	817134000	Call
IP module	817111000	761	Computer Link and Programming Software Kit	817135000	Call
External Ignition Transformer	817115000	239	ASME CSD-1 Kit (Includes safety flow switch relief valve, CSD paperwork)	817136000	838
Propane kit for VGH299	817112000	43			



CHS Series - Modulating Condensing Multiple Gas Boilers (Commercial)
Efficiency up to 96.7% (Min. Input)

Wall Mount or Standing with optional floor stand



CHS
CHS SERIES
MULTIPLE BOILERS

RATINGS AND PRICES – MULTIPLE BOILERS

No. of Heating Boilers	Boiler Model	Trade Price	Ship Wt.	Input BTU/HR		Gross Output (MBH)	Net Rating (Water) (MBH)†
				Max	Min	Max Input	Max Input
2	CHS-399	24184	500	798	39.9	760	660
3	CHS-399	36276	750	1197	39.9	1140	990
4	CHS-399	48368	1000	1596	39.9	1520	1320
5	CHS-399	60460	1250	1995	39.9	1900	1650
6	CHS-399	72552	1500	2394	39.9	2280	1980
7	CHS-399	84644	1750	2793	39.9	2660	2310
8	CHS-399	96736	2000	3192	39.9	3040	2640



No. of Heating Boilers	Boiler Model	Trade Price	Ship Wt.	Input BTU/HR		Gross Output (MBH)	Net Rating (Water) (MBH)†
				Max	Min	Max Input	Max Input
2	CHS-340	21770	500	680	39.9	648	563
3	CHS-340	32655	750	1020	39.9	972	645
4	CHS-340	43540	1000	1360	39.9	1296	1127
5	CHS-340	54425	1250	1700	39.9	1620	1409
6	CHS-340	65310	1500	2040	39.9	1944	1690
7	CHS-340	76195	1750	2380	39.9	2268	1972
8	CHS-340	87080	2000	2720	39.9	3592	2254

† Net ratings are based on piping and pick-up allowances of 1.15. Slant/Fin should be consulted before selecting a boiler for installation having unusual piping and/or pick-up requirements.

Standard Equipment

Stainless steel fire tube heat exchanger	Special spark ignition system	Outdoor reset sensor
Pre-assembled jacket	Pressure gauge	Condensate drain and trap
Stainless, metal fiber burner	Air vent	Wall hanging bracket
Multi-functional LED control with built-in auto-diagnostics	Pressure relief valve (ASME) - 30 lbs. Standard	Field convertible to L.P. Gas – kit included
Automatic reset LWCO	50 or 75PSI Optional	

Optional Equipment

	Order Code	Add		Order Code	Add
4" Low Profile Vent Terminal 340-399 Flush Mount	818174	68	System / Pipe Sensor for cascading boilers	818146	49
4" Concentric Vent Terminal 340-399	818175	578	Floor Stand CHS-340 thru CHS-399	818169	755
Storage Tank Sensor	818176	63	Floor Stand Twinning Kit (For CHS-340 & 399 Common Stand)	818220	109
			CHS-340 & CHS-399 Only		- Optional relief valve kit
			(Includes pressure gauge & relief valve)		
			50 psi	818100	65
			75 psi	818101	159
			Manual Reset High Limit, L4006E1125U, Range 100°F-200°F (Requires Immersion Well)	818223	358
			Immersion Well (123869A) for Manual Reset High Limit	410569	28

CHS Venting Material
PVC, CPVC, Polypropylene or Stainless Steel

Note: Common Vent Kits - See next page.



Common Venting for CHS-340 & CHS-399

CHS

VENTING

PRICES

Common Vent Manifold Kit (polypropylene components are UL-1738 and ULC-S636 listed)

Part No.	Slant/Fin Order Code	Trade
Two CHS-340 or CHS-399	818192	2678
Three CHS-340 or CHS-399	818193	3790

Only Centrotherm-InnoFlue components are approved for use in CHS common Venting and Termination Systems. UV Protected components must be used for termination and any area where pipe is exposed to sunlight or UV light. Installer is responsible to supply and install venting termination components as well as vent/air intake components outside of the near boiler components supplied in the common vent manifold kit.

Standard Equipment

Standard Equipment Included-
Near boiler venting including:

See installations instructions for detailed list

Air-Inlet & Exhaust Adaptors
4" x 6" air intake and exhaust branches
6" horizontal drain
6" caps

Connector rings (4" & 6")
4" Elbows
4" non return valves
Condensate Trap
Air inlet and exhaust supports
Screws and vent assembly lubricant

**SEE TABLE 2-2
in Slant/Fin common vent manifold system
IOM for detailed list of components.**

Optional Equipment

Additional Common Vent and Termination Components

	Centrotherm Order Code	Slant/Fin Order Code	Add
Straight Pipe 6" Diameter (Dia)			
12" inches long (effective length)	ISVL061	818194	88
24" inches long (effective length)	ISVL062	818195	108
36" inches long (effective length)	ISVL063	818196	147
72" inches long (effective length)	ISVL066	818197	244
Connector Ring 6" (Dia) (1 required for each joint)	IANS06	818198	10
Elbow 6" (Dia)			
87 degree	ISEL0687	818206	87
45 degree	ISEL0645	818205	87
End Pipes UV protected 6" (Dia)			
20' inches long	1SEP06	818201	47
39' inches long	ISEP0639	818202	68
Bird Screen	IASPP06	818200	32
Elbows UV protected 6" (Dia)			
87 degree	ISEL0687UV	818204	95
45 degree	ISEL0645UV	818203	95
Straight Pipe UV protected 6" (Dia) 24" inches long (effective length)	ISVL062UV	818207	122
Support Clamps for 6" (Dia) Pipe	IASC06	818199	16
Centrotherm 50ml Lubricant	IACE50	818208	8

† Net ratings are based on piping and pick-up allowances of 1.15.

Slant/Fin should be consulted before selecting a boiler for installation having unusual piping and/or pick-up requirements.

For venting through dormant chimney- 6" spaces, 6" base supply and chimney vent termination available from Centrotherm.

GAS

Caravan
GXHT & GXHT-H
SERIES

Steam Modular Boilers



15 psi Maximum Working Pressure

RATINGS AND PRICES

INTERMITTENT PILOT IGNITION (IID) MODELS

Ratings for Natural and L.P. Propane Gases

Model No. *¢	ASME Trade Price	Ship Wt.	C.S.A. Input (MBH)	Gross Output	Net AHRI Rating (Steam) (MBH) †	Net Rating (Steam) Sq Ft. ‡	No. of Modules	Thermal Efficiency %
GXHT-600HEZ	7606	1075	600	478	359	1492	2	79.7
GXHT-900HEZ	11352	1595	900	717	538	2238	3	79.7
GXHT-1200HEZ	15059	2115	1200	956	717	2984	4	79.7
GXHT-1500HEZ	18730	2635	1500	1195	896	3730	5	79.7

ASME trade price includes equipment to meet ASME requirements for individual modules.

NOTE: GXHT-HEZ Series are for use with natural gas. For L.P. Propane consult factory.

FOR LARGER SIZES, USE MULTIPLES OF THE ABOVE.

SINGLE MODULE

Ratings for Natural and L.P. Propane Gases

Model No. *¢	ASME Trade Price	Ship Wt.	C.S.A. Input (BTU/HR)	Gross Output	Net AHRI Rating (Steam) (MBH) †	Net Rating (Steam) Sq Ft. ‡	Thermal Efficiency %
GXH-300HEZ	3856	538	300	239	182	746	79.7

Standard Equipment

One per module:

Pre-assembled heat exchanger
Insulated base
Heavy-duty extended jacket
Flue collector, atmospheric stainless steel gas burner, gas orifice and manifold assembly
Combination gas valve including manual shut-off, pressure regulator, pilot adjustment and 100% shut-off.
Module pressure gauge and siphon (unmounted)

System pressure gauge (unmounted)
Water level sight glass (unmounted)
Steam pressure relief valve ASME 15 psi (unmounted)
Draft hood (unmounted)
Drain cock (unmounted)

ASME TRADE PRICE ALSO INCLUDES:

MM PS-802 low water cut-off (one per module)
PA404A pressure control (unmounted) (one per module)

Optional Equipment

	Order Code	Add
ASME REQUIRED STEAM SYSTEM CONTROLS (one per bank) order separately:		
67M Manual reset system low water cut-off	432-550	651
L4079B Manual reset system pressure control	410-677	215
Siphon for pressuretrol	400-222	26
▲ Pump control	432-551	740
Vent damper		see page 29 for price.

Headers for steam systems are not furnished by Slant/Fin.

** Factory installed option.

† Net ratings are based on piping and pick-up allowance of 1.33. Slant/Fin should be consulted before selecting a boiler for installation having unusual piping and/or pick-up requirements. Ratings must be reduced by 4% at 2,000 feet elevation and an additional 4% for every additional 1,000 feet elevation over 2,000 feet.

¢ GXHT-HEZ Series are for use with natural gas. For L.P. Propane consult factory.

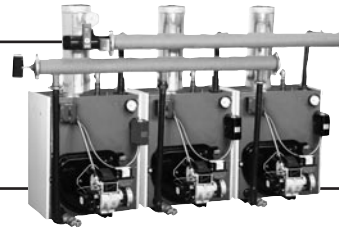
‡ Based on 240 Btu/sq. ft. net rating at 215°F steam temperature.

Modules in excess of 5 should be piped in parallel in two or more batteries.



Hot Water Modular Boilers

Wet Base - Wet Back



OIL Caravan

LDWO SERIES

100 psi Maximum Working Pressure (SEE NOTE 1)

RATINGS AND PRICES

Model No.	ASME Trade Price	Ship Wt.	No. of Heating Modules	Modules Model	Ratings for No. 2 Oil						
					AHRI Firing Rate (GPH)†	Input (BTU/HR)	Gross Output (MBH)	AHRI Net Output (MBH) ‡	Net Rating (Water) (Sq. Ft.)§	Thermal Efficiency %	Combustion Efficiency %
LDWO-600-2-5	7017	1570	2	LD-50-2.15	4.30	602	486	432	2900	82.50	—
LDWO-750-2-6	8302	1790	2	LD-60-2.60	5.20	728	602	523	3453	82.70	—
LDWO-850-2-7	8945	2000	2	LD-70-3.00	6.00	840	711	618	4120	84.60	—
LDWO-900-3-5	10472	2355	3	LD-50-2.15	6.40	896	744	648	4347	82.50	—
LDWO-1100-3-6	12391	2685	3	LD-60-2.60	7.80	1092	903	785	5235	82.70	—
LDWO-1300-3-7	13349	3000	3	LD-70-3.00	9.00	1260	1066	927	6180	84.60	—
LDWO-1700-4-7	17710	4000	4	LD-70-3.00	12.00	1680	1421	1236	8240	84.60	—
LDWO-2100-5-7	22027	5000	5	LD-70-3.00	15.00	2100	1777	1545	10300	84.60	—
LDWO-2500-6-7	26302	6000	6	LD-70-3.00	18.00	2520	2129	1851	12360	84.60	84.50
LDWO-2900-7-7	30531	7000	7	LD-70-3.00	21.00	2940	2484	2163	14420	84.60	84.50
LDWO-3400-8-7	34717	8000	8	LD-70-3.00	24.00	3360	2839	2469	16480	84.60	84.50

ASME trade price includes equipment to meet ASME requirements for individual modules.

SINGLE MODULES

Model No.	ASME Trade Price	Ship Wt.	Ratings for No. 2 Oil							
			AHRI Firing Rate (GPH)†	Input (BTU/HR)	Gross Output (MBH)	AHRI Net Output (MBH) ‡	Net Rating (Water) (Sq. Ft.)§	No. of Heating Modules	Thermal Efficiency %	Combustion Efficiency %
LD-50-2.15	3535	785	2.15	301	248	216	1450	1	82.50	84.90
LD-60-2.60	4178	895	2.60	364	301	262	1726	1	82.70	84.80
LD-70-3.00	4499	1000	3.00	420	355	309	2060	1	84.60	84.50

Standard Equipment

One per module unless otherwise noted:

- Pre-assembled heat exchanger
- Heavy-duty insulated jacket
- Flame retention oil burner with nozzle; cadmium sulfide flame detector
Carlin standard, Beckett n/c optional
- Primary burner control
- Module pressure and temperature gauge

- System pressure and temperature gauge (unmounted one per system)
- Control header (unmounted, one per system) ¢
- Pressure relief valve, ASME (unmounted). Specify 30, 50, 75 or 100 psi.
- Draft regulator (unmounted)
- Flue brush
- Hi-limit control, auto reset
- Drain cock (unmounted)
- ** One per system - Not included with single mod.

Optional Equipment

ASME REQUIRED SYSTEM CONTROLS (one per bank) order separately:

- Manual reset low water cut-off (one per bank)
- Manual reset hi-limit (one per bank)

see page 30

- ** Extra for N.Y.C. BAR Kit — for models LDWO-750, 850, 1100 thru 3400 ONLY.
- ** Two-stage fuel pump in place of single-stage fuel pump per module (Not available with Riello burners)
- Headers (supply and return sets)
- Control systems
- External tankless heaters

576 per module
94

For ordering information,
see pages 30.
see pages 30.

Lead/lag control is highly recommended for all Caravan systems.

** Factory installed option.

† Light oil, 140,000 Btu per gallon.

‡ Net ratings are based on piping and pick-up allowance of 1.15. Slant/Fin should be consulted before selecting a boiler for installation having unusual piping and/or pick-up requirements. Ratings must be reduced by 4% at 2,000 feet elevation and an additional 4% for every additional 1,000 feet elevation over 2,000 feet.

§ Based on 150 Btu/h per square foot E.D.R. at 170°F average water temperature.

¢ Consists of 3" control header with 2 wells and temperature and pressure gauge. Specify operating pressure.

NOTE 1:

Specify pressure relief setting. Relief valve is available with 30, 50 or 100 psi.

NOTE 2:

Modules in excess of 8 should be piped in parallel in two or more banks.

OIL

Caravan LDZO SERIES

Steam Modular Boilers Wet Base - Wet Back



RATINGS AND PRICES

15 psi Maximum Working Pressure

Model No.	ASME Trade Price	Ship Wt.	No. of Heating Modules	Module Model	Ratings for No. 2 Oil					Thermal Efficiency %
					AHRI Burner Capacity (GPH)*	Input (BTU/HR)	Gross Output (MBH)	AHRI Net Output (MBH) †	Net Rating E.D.R. (Steam) Sq. Ft. ‡	
LDZO-600-2-5	7498	1248	2	LD-50-2.15Z	4.3	602	500	375	1554	82.5
LDZO-750-2-6	8517	1420	2	LD-60-2.60Z	5.2	728	622	467	1946	85.5
LDZO-850-2-7	9212	1596	2	LD-70-3.00Z	6.0	840	699	524	2192	83.2
LDZO-900-3-5	11191	1872	3	LD-50-2.15Z	6.4	896	750	563	2311	82.5
LDZO-1100-3-6	12710	2130	3	LD-60-2.60Z	7.8	1092	934	701	2918	85.5
LDZO-1300-3-7	13750	2394	3	LD-70-3.00Z	9.0	1260	1048	789	3287	83.2
LDZO-1700-4-7	18241	3192	4	LD-70-3.00Z	12.0	1680	1398	1149	4379	83.2
LDZO-2100-5-7	22687	3990	5	LD-70-3.00Z	15.0	2100	1747	1539	5474	83.2

FOR LARGER SIZES, USE MULTIPLES OF THE ABOVE AND CONSULT FACTORY.

ASME trade price includes equipment to meet ASME requirements for individual modules.

SINGLE MODULES

Model No.	ASME Trade Price	Ship Wt.	Ratings for No. 2 Oil					Thermal Efficiency %	
			AHRI Burner Capacity (GPH)*	Input (BTU/HR)	Gross Output (MBH)	AHRI Net Output (MBH) †	Net Rating (Water) CU Ft.		No. of Heating Modules
LD-50-2.15Z	3803	624	2.15	301	248	186	—	1	82.5
LD-60-2.60Z	4285	710	2.60	364	311	233	—	1	85.5
LD-70-3.00Z	4633	798	3.00	420	349	262	—	1	83.2

Standard Equipment

One per module:

Pre-assembled heat exchanger and insulated jacket
 Flame retention oil burner with nozzle;
 cadmium sulfide flame detector
 Primary burner control
 Module pressure gauge and siphon (unmounted)
 System pressure gauge and siphon (unmounted)
 Water level sight glass (unmounted)

Steam pressure relief valve, ASME 15 psi (unmounted)
 Draft regulator
 Flue brush
 Drain cock (unmounted)

ASME TRADE PRICE ALSO INCLUDES:
 PS-801 low water cut-off (one per module)
 PA404A pressure control (one per module)

Optional Equipment

ASME REQUIRED STEAM SYSTEM CONTROLS (one per bank) order separately:

	Order Code	Add
67M Manual reset system low water cut-off (one per bank)	432-550	562
L4079B Manual reset system pressure control (one per bank)	410-677	173

** Extra for N.Y.C. BAR Kit — for models LDZO-750, 850, 1100 thru 2100 ONLY.

** Two-stage fuel pump in place of single-stage fuel pump (Not available with Riello burners)
 Pump control

		576 per module
		94 per module
	432-551	678

Headers for steam systems are not furnished by Slant/Fin.

* Light oil, 140,000 Btu per gallon.

** Factory installed option.

† Net ratings are based on piping and pick-up allowance of 1.33. Slant/Fin should be consulted before selecting a boiler for installation having unusual piping and/or pick-up requirements. Ratings must be reduced by 4% at 2,000 feet elevation and an additional 4% for every additional 1,000 feet elevation over 2,000 feet.

‡ Based on 240 Btu/h per square foot E.D.R. at 215°F steam temperature.

NOTE:

Modules in excess of 5 should be piped in parallel in two or more banks.



Caravan® Modular Boiler Controls and Accessories

Hot Water Systems Only

SC-Series – Modular Boiler Step Controls



Model No.	Trade Price	Order Code	Description
SC-3	984	435080	3-stage controller is the primary system control for up to 3 stages. Includes the control, outdoor temperature sensor and supply water temperature sensor.
SC-9	1689	435081	9-stage controller is the primary system control for up to 9 stages. Includes the control, outdoor temperature sensor, supply water temperature sensor and extra universal sensor. (Universal sensor may be used to observe either boiler return water temperature or temperature rise in boiler)
Immersion well	94	411008	C7043A – Well and housing for supply water sensor

High limit and low water cut-off

Most codes require one manual reset high limit and one manual reset low water cut-off per system. Manual reset high limit requires a immersion well.

High limit (Manual reset)	202	410671	Honeywell L-4006E manual reset high limit, temperature range up to 240° F (requires immersion well listed below)
Immersion well	29	410569	Honeywell 123869A immersion well for manual reset high limit
Low water cut-off (Manual reset)	251	432553	McDonnell & Miller 751-P-MT-120 - 120 volt manual reset low water cut-off
Low water cut-off (Manual reset)	233	432554	Hydrolevel 550 -120 volt manual reset low water cut-off

Caravan® Headers



Headers-Supply and Return Sets

Order individually or in combination to meet total number of modules in each bank of boilers. Use the table below to determine the correct quantity of 2- and 3-module headers to order. For instance, for a single bank 5-module system, order one 2-module header set and one 3-module header set. For use with hot water systems up to 100 psi only.

Quantity of boiler modules in bank	2	3	4	5	6	7	8	9	10
Quantity of 2-module header sets	1		2	1		2	1		2
Quantity of 3-module header sets		1		1	2	1	2	3	2
Shipping weight (lbs.)	70	116	140	186	232	256	302	348	372

Included in each set

Each header set includes separate supply and return header sections plus all nipples, couplings, fittings and unions needed to connect header sections to boiler modules. When headers are used in combination as in above example, a field supplied, Schedule 40 steel pipe (28" x 3" for gas; 18" x 3" for oil) is required to join individual header sections.

STANDARD HEADER SETS

	Trade Price	Ship Wt.	Order Code	
			GGT	LWDF & LDWO
2-module header sets	1151	70	412-042	432-572
3-module header sets	1529	116	412-043	432-573

Caravan Headers for State of Pennsylvania Only

	Trade Price	Ship Wt.	Order Code	
			GGT	LWDF & LDWO
2-module header sets for Pennsylvania	1226	72	412-062	430-882
3-module header sets for Pennsylvania	1586	120	412-063	430-883



Slant/Fin Automatic Vent Dampers

For intermittent ignition pilots.

C.S.A. Design Certified for Slant/Fin Caravan gas boilers.

ORDER ONE PER MODULE

Module Model Number (As listed on price page for GGT & GGHT water models and GXHT & GXHT-H steam models)	Trade Price	Ship Wt.	Order Code	Vent Damper Description
GG-300ES	301	10 lbs.	412-7082	8" dia. with 54" vent damper harness
GG-350HES, GXH-300H	301	11 lbs.	412-7092	9" dia. with 54" vent damper harness
GG-375HES, GG-399HES	301	12 lbs.	412-7102	10" dia. with 54" vent damper harness

Caravan® Modular Boiler Controls and Accessories - Continued

Hot Water Systems Only



Individual Caravan Controls

Model	Order Code	Add	Model	Order Code	Add
Water Controls:			Steam Controls:		
Control header only 3"		411-757 116	Pressure control	PA404A	400-117 120
Flow Switch	FS4-3T3-1	790-338 470	Low water cut-off (electric)	67	400-116 375
Low water cut-off	764	400-264 572	Low water cut-off (electronic 120V)	PS801	430-130 252
Hi-limit (manual reset)	L4006E1138B	410-671 202	Feeder for PS801 (120V)	WF2	430-131 483
Well for L4006E	123869A	410-569 29	Low water cut-off (electronic 24V)	Hydrolevel 400	411-521 164
System enable thermostat	T675A	410-672 147	Feeder for Hydrolevel 400	VXT-24	410-820 301
Sunshield	34886A	410-664 52	Pump control	42	432-551 740
Accessories:			Pump control	150	403-004 851
Enclosed relay SPDT	R4225A1008	411-915 194	ASME REQUIRED STEAM SYSTEM CONTROLS (one per bank):		
			Pressure control (manual reset)	L4079B	410-677 215
			Low water cut-off (manual reset)	67M	432-550 651

Caravan® External Tankless Heater Packages

For use with hot water boilers only



EMV-ELECTRIC MOTORIZED VALVES

Domestic hot water control packages (optional), for use with SC-9

Model No.	ASME Trade Price	Order Code	Description
11/2" EMV Valve Package	3229	435-075	EMV valve packages are for use with a domestic hot water heat exchanger (BP purchased separately) to generate volume hot water. EMV valve package includes one L6006A aquastat and well and one EMV II valve.
2" EMV Valve Package	3224	435-076	

BRAZED PLATE HEAT EXCHANGER

BP SERIES: Stainless steel brazed construction heat exchanger in stainless steel insulated cabinet

Tankless Heater No.	Trade Price	Approx. Ship Wt. Lb.	Order Code	Actual Sq. Ft. Heat Surf.	Heated Service Water			Jacketed Shell Size Inches	Gross Boiler Output @ Cont. Draw Rating MBH	Required Boiler Water Flow Rate G.P.M.	Boiler Side Pressure Drop FT. W.C.
					DHW continuous draw 40°-140°F GPH	DHW continuous draw 40°-140°F GPM	DHW Pressure Drop psi				
BP-1B	3515	20	401-231	7.5	411	6.8	2.0	14-1/2 x 10 x 5	342	21	5.6
BP-2B	3963	30	401-232	12.0	821	16.7	1.6	13-1/4 x 11 x 6-1/2	684	41	5.1
BP-3B	4305	40	401-233	20.0	1232	20.5	2.0	13-1/4 x 13-1/4 x 6-1/2	1026	57	7.5

Maximum working pressure 430 psi.

Optional Equipment

	Order Code	Add
Taco 0010 Circulator	430-102	281



Vintage Boilers (While Supplies Last)

* Gross Output

GAS

HIGH EFFICIENCY

(With Domestic Hot Water Generator option) Wall Mount Only



Victory VSL SERIES

VSL Series - Modulating Condensing Stainless Steel

Knocked down for field assembly

RATINGS AND PRICES

Model No.	Packaged Water Boiler (Nat. Gas or Propane) Intermittent Pilot		Ratings for Natural and L.P. Propane Gases				A.F.U.E. %	Water Volume
	Trade Price	Ship Wt.	C.S.A. Input Max (MBH)	C.S.A. Input Min (MBH)	D.O.E. Capacity (MBH)	Net AHRI (MBH)		
VSL-160B	4981	93 lbs	160	30	142,000	123	* 92	1.2
VSL-160C	5848	139 lbs	160	30	142,000	123	* 92	Gal

EACH VSL BOILER INSTALLATION REQUIRES VENTING COMPONENTS LISTED IN "OPTIONAL EQUIPMENT" BELOW.

\$1000 Contractor Coupon Available

GAS

HIGH EFFICIENCY • FLOOR STANDING or WALL MOUNT

LYNX SERIES

LYNX - Modulating Condensing

RATINGS AND PRICES

Model No.	Packaged Water Boiler (Nat. Gas or Propane) Intermittent Pilot		Ratings for Natural and L.P. Propane Gases				A.F.U.E. %	Vent Size Diameter Nominal	Air Intake Nominal Diameter
	Trade Price	Ship Wt.	Input Max (MBH)	Input Min (MBH)	D.O.E. Capacity (MBH)	Net AHRI (MBH)			
LX-150	5860	140 lbs	150	37.50	133	116	92.5	3	3

GAS

HIGH EFFICIENCY • FLOOR STANDING ^a Combustion Efficiency up to 96.7% (Min. Input)

JAGUAR Single & Multiple

JAGUAR - Modulating Condensing • Residential Commercial

RATINGS AND PRICES

Model No.	Natural Gas Intermittent Pilot		Ratings for Natural Gas				Vent Size Nominal Diameter	Air Intake Nominal Diameter	Thermal Efficiency
	Trade Price Each	Ship Wt.	C.S.A. Input Max MBH	C.S.A. Input Min MBH	Gross Output MBH	Net AHRI MBH†			
J-390	11130	300 lbs.	390	110	352	306	4"	4"	90.2%

\$1000 Contractor Coupon Available

Material Return Authorization Policy and Procedure for Boiler and Parts

This policy and procedure supersedes all previous policies and publications concerning the return of Slant/Fin boilers and parts. Slant/Fin reserves the right to repair or replace, at its option, free of charge, F.O.B. Greenvale, N.Y., any part or parts of the boiler which in Slant/Fin's sole judgment are found to be defective, per the Limited Warranty for Hot Water and/or Steam Boilers.

IN-WARRANTY RETURNED BOILERS

PRIOR APPROVAL

Before a Slant/Fin boiler is returned, a Return Authorization Number (RAN) must be issued by Slant/Fin. Without such prior authorization, Slant/Fin may refuse to accept the return shipment and may not consider any credit for subject boiler.

WHO TO CONTACT

The wholesaler or sales representative must request, in advance, (by Fax) the authorization to return a boiler from Slant/Fin Technical Service Department. Fax number: 516-484-6958.

INFORMATION REQUIRED

To facilitate quick processing of your request, a (RAN) form must be faxed in by the wholesaler or sales representative. Contractor's name and address, owner's name and address, boiler model number, boiler serial number, original invoice number and date, boiler application (residential or commercial), complaint/problem description, date of installation and date of failure.

RETURN TAG AND PACKING SLIP

Upon authorization for return from Slant/Fin, the Return Authorization Number (RAN) will be faxed back to the requesting wholesaler or sales representative. The return authorization number must be included with the boiler and the material return authorization number put on the crate. All returns must be received by Slant/Fin, Greenvale, New York, within 90 days after receipt of authorization. All returns are subject to handling charges and reconditioning charges where required.

PACKAGING RETURNED BOILERS

Returned boilers should be packaged to prevent any transportation damage. Always package the boiler in a vertical position. Mark the carton, ATTN: TRUCKER - THIS SIDE UP. Boilers authorized for return must be complete and assembled with all integral parts included. Otherwise, the allowable credit written will deduct the missing parts and/or components.

PRE-PAY FREIGHT

Boilers returned must be shipped freight prepaid. Under no circumstances will any unit be accepted freight collect.

SLANT/FIN ACTION

Credits for boilers returned, are not issued immediately. Every effort will be made by Slant/Fin to process return boiler credit within 30 days after receipt. No credit will be issued for in-warranty boilers that have been field scrapped, unless special authorization has been granted and documented by Slant/Fin.

1. If factory inspection determines that the returned boiler is defective due to a manufacturer's defect, boiler credit will be issued to the customer.
2. If the factory inspection determines that the returned boiler is defective, but not due to a manufacturer's defect, such as a dry fire, no credit will be issued. The Director of Technical Services will issue an inspection report to the customer and also request final disposition (i.e. return boiler to customer freight collect). If disposition is not given within two weeks of the inspection report, the boiler will be scrapped.

IN-WARRANTY RETURNED PARTS

PRIOR APPROVAL

Before boiler parts are returned, a Return Authorization Number (RAN) must be issued by Slant/Fin. Without such prior authorization Slant/Fin may refuse to accept the return shipment and may not consider any credit. To avoid credit delays, it is recommended that parts be returned on a monthly basis, or when the number of parts warrant a return (not on a one-to-one basis).

WHO TO CONTACT

The wholesaler or sales representative must request, in advance, (by fax) for authorization to return parts, from Slant/Fin Technical Service Department. Fax number: 516-484-6958.

INFORMATION REQUIRED

The wholesaler or sales representative must fax a (RAN) form when requesting a Return Authorization Number (RAN) for in-warranty parts: Boiler model number, boiler serial number, boiler application (residential or commercial), complaint/problem description, date of installation/failure.

RETURN TAG AND PACKING SLIP

Upon authorization for return from Slant/Fin, the Return Authorization Number (RAN) will be faxed back to the requesting wholesaler or sales representative. The return authorization number must be included with the parts and the return authorization number put on the box. All returns must be received by Slant/Fin, Greenvale, New York, within 90 days after receipt of authorization. All returns are subject to handling charges and reconditioning charges where required.

PACKAGING RETURNED PARTS

Returned parts should be packaged to prevent any transportation damage. Parts and components authorized for return must be complete and assembled with all integral parts included. Otherwise, no allowable credit will be issued and the components will be scrapped.

PRE-PAY FREIGHT

Parts and components returned must be shipped freight prepaid. Under no circumstances will any unit be accepted freight collect.

SLANT/FIN ACTION

Credits for parts and components returned are not issued immediately. Every effort will be made to process returned parts credits within 30 days following receipt. No credit will be issued for in-warranty parts that are field scrapped unless special authorization was granted and documented by Slant/Fin.

1. If factory inspection determines that the returned parts are defective and have-in warranty manufacturing dates, credit will be issued to the customer.
2. If factory inspection determines that the returned part is out of warranty, no credit will be issued and the component will be scrapped.



BOILER WARRANTIES

Lifetime Limited Warranty for Residential Cast-iron Hot Water Boilers in Household Use

Gas Models: Sentinel, Sentry, Galaxy and Victory

Oil Models: Intrepid, Liberty, Liberty II, XL-2000, Q3 Series

Electric Models: Monitron

FIRST-YEAR WARRANTY INCLUDES:

Repair or replacement for a period of one year after original installation of all parts found to be defectively manufactured.

LIFETIME LIMITED WARRANTY OF CAST-IRON SECTIONS is effective for as long as the boiler is owned by the original purchaser or for 25 years, whichever time period is longer. The warranty includes repair or replacement of cast iron sections found to be defectively manufactured, at a cost to consumer equal to the percentage indicated below of the manufacturer's then list price for the replacement parts:

Year of	Percentage paid by consumer (of list price at time of claim)	Year of	Percentage paid by consumer (of list price at time of claim)
2 thru 10	0%	18	40%
11	5%	19	45%
12	10%	20	50%
13	15%	21	55%
14	20%	22	60%
15	25%	23	65%
16	30%	24	70%
17	35%	25 & after	75%

This warranty extends only to boilers in household use. See "Additional Warranty Terms" section for more details.

Limited Ten-Year Warranty for Residential Application Cast-iron Steam Boilers

This warranty extends only to steam boilers and Jaguars in household use in buildings with one or two family dwelling units and which have been properly installed by a qualified heating contractor whose principal occupation is in the installation of heating equipment. Also, this warranty applies only to the first retail purchaser and only if the boiler has remained at all times in the location at which it was originally installed.

FIRST-YEAR LIMITED WARRANTY FOR RESIDENTIAL STEAM BOILERS:

Slant/Fin warrants its residential steam boilers to be free from defects in material and workmanship for one year from date of original installation. If any parts are found to be defective in material or workmanship, Slant/Fin will repair or replace the defective parts.

SECOND THROUGH TENTH YEAR LIMITED WARRANTY FOR CAST-IRON SECTION ASSEMBLY OF RESIDENTIAL STEAM BOILERS:

Slant/Fin warrants the cast-iron section assembly of its residential steam boilers to be free of defects in material and workmanship for the second through the tenth year following the date of original installation. If any sections are found to be defective during this period, Slant/Fin will repair or replace the section or, at its option, the entire heat exchanger.

See "Additional Warranty Terms" section for more details.

Limited Ten-Year Warranty For VGH Series 299-500 MBH, All Caravan Modular Boilers, Individual Cast Iron (hot water and steam), and Condensing Gas Boilers Installed in Commercial Applications

WARRANTY INCLUDES:

FIRST YEAR: Repair or replacement in accordance with warranty service procedure, for a period of one year after original installation, of all parts found to be defectively manufactured.

SECOND THROUGH TENTH YEAR: Repair or replace for the second through tenth year after original installation, of the cast iron or cast aluminum heat exchanger found to be defectively manufactured, at no cost for the replacement heat exchanger. Second through tenth year warranty is for the heat exchanger only.

This warranty extends only to boilers installed in closed loop space heating applications and domestic hot water applications. A properly sized heat exchanger must be used to heat the domestic water.

See "Additional Warranty Terms" section for more details.

Additional Warranty Terms

All Boiler Models

Warranty extends only to boilers which have been properly installed, operated and maintained in accordance with Slant/Fin installation instructions and all applicable codes. Warranty applies only if the boiler has remained at all times in the location at which it was originally installed. Slant/Fin makes no express warranties other than the warranties contained herein.

WARRANTY EXCLUDES:

All labor charges incurred by any person in connection with the examination, removal, and repair of parts claimed to be defective and the installation of replacement parts.

The part claimed to be defective shall be returned to Slant/Fin. The cost of shipment to Slant/Fin is borne by the consumer.

Damage caused by water that contains excessive lime, calcium, or other contaminants. Corrosion of cast iron heat exchanger caused by low operating water temperature.

Boilers operated with combustion air that may be contaminated by chemicals or improper fuel additives.

Boilers operated with water additives or water/system conditions that may cause heat exchanger failure.

Boilers that have failed or malfunctioned due to improper or negligent operation, abuse, misuse, freezing, natural disaster, unauthorized alteration, improper installation or improper repair.

Improper burner adjustments, control settings or maintenance procedures.

Boiler warranty is void if purchased on the Internet.

NOTE: *Boilers are to be used in closed systems. Any application that causes significant quantities of fresh make up water to enter the system is not permitted. Such applications can be met with a heat exchanger that will maintain the boilers in a closed system.*

AFTER FIRST YEAR, WARRANTY EXCLUDES:

All boiler components other than a cast-iron or cast-aluminum heat exchanger, such as, sheet metal base, jacket, insulation, combustion chamber, tankless heater exhaust and air inlet

pipng, burner enclosure, mixing elbow, gas and air orifice, blower assembly, air filter and electrical and mechanical components furnished to Slant/Fin by other manufacturers, such as pumps, relays, controls, gauges, etc.

PROCEDURE FOR WARRANTY SERVICE:

For warranty service, provide the person who installed your Slant/Fin boiler with the following information: boiler model number and serial number (from the boiler rating plate) and the date of installation. That person will notify the Slant/Fin wholesaler from whom the boiler was purchased.

Part(s) claimed to be defective must be returned through trade channels and replacement part(s) will, if warranty conditions are met, be provided by Slant/Fin through the wholesaler.

If there are any questions about the coverage of this warranty, please contact Slant/Fin at the address shown below.

LIMITATIONS ON IMPLIED WARRANTIES AND DAMAGES:

Slant/Fin assumes no liability for damages or unsatisfactory performance of any kind which is a result of improper installation.

Slant/Fin's sole obligation in the event of a breach of any implied warranty (including, but not limited to, implied warranties of merchantability and fitness for a particular purpose) is limited to repair or replacement, and all such warranties are limited in duration to the period of time after the date of original installation as stated above.

This warranty does not cover claims for incidental or consequential damages resulting from a breach of any express or implied warranty or any other reason.

Some states do not allow limitations on how long an implied warranty lasts or the exclusion or limitation of incidental or consequential damages. So the above limitation or exclusion may not apply to you.

THIS WARRANTY GIVES YOU SPECIFIC LEGAL RIGHTS AND YOU MAY ALSO HAVE OTHER RIGHTS WHICH VARY FROM STATE TO STATE.

Technical Service Department
Slant/Fin Corporation, 100 Forest Drive, Greenvale, N.Y. 11548 • (516) 484-2600
techservice@slantfin.com

Effective October 2010



CHS GAS BOILER WARRANTY

Residential Application

Limited 15 year (includes 5 year Protection Plan when registered upon installation.

Commercial Application

Limited 10 Year (Does NOT include Protection Plan)

The warranty is contingent upon the installation by a licensed professional heating contractor and maintenance and service being performed by a licensed professional heating contractor on a regular yearly basis. Installation of these boilers and/or maintenance or service conducted by unlicensed or non-professional heating contractors will void this warranty. Installation must be in accordance with this manufacturer's manuals, national and local codes and regulations.

This warranty specifically excludes boilers operated with combustion air contaminated externally by chemical or corrosive vapors, improper fuel additives or with water/system conditioners which may cause heat exchanger failure. In addition, this warranty excludes boilers that have failed or malfunctioned due to improper or negligent operation, accident, abuse, freezing, misuse, unauthorized alteration or improper repair or maintenance. This warranty excludes boilers overheated due to the system not providing water, or adequate flow through the boiler when the burner is on. Any use of improper anti-freeze will void this warranty. This warranty does not cover the labor and shipping costs associated with the repair or replacement of the boiler, the properly registered Homeowner Protection Plan covers applicable labor for the first five years of operation from dated of installation. The Homeowner Protection Plan is administered through Slant/Fin. Warranty applies if boiler is registered within first 30 days of installation and for the first retail purchaser only. Boiler must remain at all times in the location at which it was originally installed

Use of any anti-freeze not approved by Slant/Fin will void the warranty. Warranty applies if boiler is registered within first 30 days of installation and for the first retail purchaser only. Boiler must remain at all times in the location at which it was originally installed.

First through tenth year:

Slant/Fin warrants the heat exchanger free from defects in materials and workmanship for 10 years from date of installation.

If any original factory supplied parts fail in the first year due to manufacturing defect, or the heat exchanger in the first 10 years are found to be defective, Slant/Fin will provide replacement of such defective parts or heat exchanger.

In addition to the product warranty, Slant/Fin will provide a 5 year Homeowner Protection Program (HPP) for residential applications only to cover original factory supplied parts and labor to repair or replace them for five years from the date of installation provided only if the boiler is properly registered within one month of the date of installation. Claims requests will be processed directly through Slant/Fin. All claims must be pre-approved with Slant/Fin prior to the work being completed.

Eleventh through the fifteenth year:

Slant/Fin warrants the heat exchangers are free from defects in material and workmanship for the eleventh through fifteenth year from the date of installation. If, during such time, the heat exchanger is found to be defective, Slant/Fin will provide a replacement heat exchanger upon payment of a proportionate charge based upon the time the boiler has been in service. The proportionate charge will be equal to the appropriate percentage of the list price of such heat exchanger at the time warranty claim is made and will be as follows:

- 11th year = 20%
- 12th year = 30%
- 13th year = 45%
- 14th year = 60%
- 15th year = 80%
- There after = 100%

Summary of Limited Warranties for Boilers

	Hot Water	Steam
Residential gas oil and electric	Lifetime	10Years
Caravan gas, and oil	10Years	10Years
Individual commercial application	10 Years	10Years
Indirect-fired water heaters	7 Years	See Pub. No. HWT-40
CHS	15 Years	-
For warranty details, see pgs. 38-42		

Code Approvals:

Slant/Fin boilers meet most codes throughout the United States. Listed below are code approvals which **we are most frequently asked about**. However, please consult your Slant/Fin representative regarding other approvals you may have to meet.

National: All Slant/Fin boilers are approved by various agencies listed below.

All Slant/Fin boilers have AHRI approved ratings. Ratings for boilers with inputs less than 300,000 Btuh are established under ASHRAE Standard 103 as required by DOE and are verified annually by Hydronics Institute under the AHRI DOE Verification Program.

Ratings for boilers with inputs 300,000 Btuh and over are established by Hydronics Institute under AHRI test procedures.

Slant/Fin is a holder of an ASME Certificate of Authorization and Code Stamp. All cast-iron and electric boilers are built to the requirements of Section IV of the ASME Boiler and Pressure Vessel Code.

New York City: Slant/Fin boilers meet the requirements of B.A.R. "Bureau of Air Resources".

BOILER MODEL	CSA CERTIFICATION #	INTERTEK ETL REPORT #	UL FILE #	LC #
Sentry	1030633			
Sentinel	1030633			
Victory VSPH	1199402			
Victory II VHS	1338598			
Galaxy GG	12042223			
GGT & GGHT Caravan	12042223			
Galaxy GXH	12004229			
GXHA	12004229			
GXHT Caravan	12004229			
Lynx		100038936CRT-002		
CHS	2445660			
VSL-160 & VSL II	253046			
Q3	2070558			
TR, TRDV & LD		3142606CRT-002		
EC-10 Series, EC-10DV Series		3120213CRT-002		
Monitron I, II and III			E39326	
VGH				17241-2GML

New York City B.A.R. No. 51-88.
Slant/Fin Vent Damper NYS Approval No. 8859.

Pennsylvania All Slant/Fin oil and gas boilers are approved in Pennsylvania by PA Cert 3893 for individual boilers and 174-BT-S for Caravan Systems.

FAX ORDERS TO: 516-484-2694
EMAIL ORDERS TO: orders@slantfin.com

Prices in U.S. dollars • \$15 net minimum order
For trade prices on other Slant/Fin products, refer to these price books:
Baseboard Radiation Pub. No. R-01
Boiler Parts & Price Pub. No. BRP-01
Commercial Radiation Pub. No. R-01C



©Slant/Fin Corp. 2019 • Printed in the U.S.A. 419 • Publication No. B-01

SLANT/FIN CORPORATION, Greenvale, N.Y. 11548 • Phone: (516) 484-2600

To order by fax: (516) 484-2694

www.slantfin.com