

CAC SERIES

3 to 5 Ton Split System Condensers



**10 - 11 SEER
Three Phase**

STANDARD FEATURES

- High efficiency scroll compressors on all models
- Copper tube / aluminum fin coil
- Prepainted condenser fins
- Top air discharge for quieter operation
- G-90 Galvanized steel cabinet with integral base rails
- Triple step paint process
- Coated inlet and discharge grilles ruggedly built for enhanced coil protection
- Numerous service friendly features
- Service valves on all models with 3-1/2" stubs
- External refrigerant connections
- High and Low pressure switches for compressor protection
- Low Ambient Control
- Fan motor in-line disconnect plug
- Coil Guard
- 1 Year parts, 5 year compressor limited warranties
- 11+ SEER with Expansion Valve coils



Rated in accordance with ARI Standard 210.



RESIDENTIAL AND COMMERCIAL SYSTEMS • SPLIT SYSTEMS • PACKAGED AIR CONDITIONERS
• COMBINATION GAS / ELECTRIC UNITS • HEAT PUMPS • AIR HANDLERS • MANUFACTURED
HOME AIR CONDITIONERS • GAS, OIL AND ELECTRIC FURNACES

International Comfort Products (LLC)
650 Heil-Quaker Avenue, Lewisburg, TN 37091

501 11 1302 01
4/20/05

UNIT SPECIFICATIONS												
	MODELS - CAC											
Cooling	036HC	036LC	036SC	042HC	042LC	042SC	048HC	048LC	048SC	060HC	060LC	060SC
Capacity BTUH Range	34,200 to 37,000			39,500 to 43,000			45,000 to 48,000			56,000 to 59,000		
S.E.E.R. Range	10.2-11.3			10.2-11.2			10.2-11.3			10.1-10.6		
Electrical												
Volts / Phase / Hertz	230/3/60	460/3/60	575/3/60	230/3/60	460/3/60	575/3/60	230/3/60	460/3/60	575/3/60	230/3/60	460/3/60	575/3/60
Voltage Min - Max	197-253	414-506	517-633	197-253	414-506	517-633	197-253	414-506	517-633	197-253	414-506	517-633
Total Unit Amps	17.17	8.58	6.87	20.01	10.0	8.0	21.68	10.84	8.67	28.38	14.19	11.35
Min. Circuit Amp.	14.2	7.1	5.8	16.9	8.7	6.6	17.9	8.8	7.0	25.1	13.1	8.8
Minimum Fuse Size	20	15	15	20	15	15	25	15	15	30	15	15
Max. Fuse	20	15	15	25	15	15	30	15	15	40	15	15
Compressor												
RLA	10.3	5.1	4.2	12.4	6.4	4.8	12.8	6.4	5.1	18.6	9.0	6.6
LRA	77.0	39.0	31.0	88.0	44.0	34.0	91.0	46.0	37.0	128.0	63.0	49.0
Type	Scroll	Scroll	Scroll	Scroll	Scroll	Scroll	Scroll	Scroll	Scroll	Scroll	Scroll	Scroll
Condenser Fan Data												
Quantity	1	1	1	1	1	1	1	1	1	1	1	1
Volts/Phase/Hertz	230/1/60	460/1/60	575/1/60	230/1/60	460/1/60	575/1/60	230/1/60	460/1/60	575/1/60	230/1/60	460/1/60	575/1/60
FLA	1.4	0.66	0.55	1.4	0.66	0.55	1.9	0.74	0.57	1.9	0.74	0.57
LRA	3.0	1.2	0.9	3.0	1.2	0.9	3.7	2.15	1.88	3.7	2.15	1.88
Blades/Diameter/Pitch	3/18/29	3/18/29	3/18/29	3/18/29	3/18/29	3/18/29	3/20/28	3/20/28	3/20/28	3/20/28	3/20/28	3/20/28
Hp - Rpm - Speeds	1/4 1100-1	1/5 1075-1	1/5 1075-1	1/4 1100-1	1/5 1075-1	1/5 1075-1	1/3 1075-1	1/3 1075-1	1/3 1075-1	1/3 1075-1	1/3 1075-1	1/3 1075-1
Bearing Type	Sleeve	Sleeve	Sleeve	Sleeve	Sleeve	Sleeve	Sleeve	Sleeve	Sleeve	Sleeve	Sleeve	Sleeve
Rotation (Shaft End)	CW	CW	CW	CW	CW	CW	CW	CW	CW	CW	CW	CW
Max. CFM	2000	2000	2000	2000	2000	2000	3000	3000	3000	3000	3000	3000
Condenser Coil												
Rows / Fins per Inch	1 / 24	1 / 24	1 / 24	1 / 24	1 / 24	1 / 24	1 / 24	1 / 24	1 / 24	1 / 24	1 / 24	1 / 24
Total Face Area-Sq. ft.	10.8	10.8	10.8	12.6	12.6	12.6	16.6	16.6	16.6	16.6	16.6	16.6
Tube Diameter	3/8	3/8	3/8	3/8	3/8	3/8	3/8	3/8	3/8	3/8	3/8	3/8
Refrigerant												
Type	R-22	R-22	R-22	R-22	R-22	R-22	R-22	R-22	R-22	R-22	R-22	R-22
Ounces *	96			98			122			126		
Supplied Optional Orifice Size	.067	.067	.067	.076	.076	.076	.083	.083	.083	.093	.093	.093
Line Size Suction I.D. (in.)	3/4	3/4	3/4	3/4	3/4	3/4	7/8	7/8	7/8	7/8	7/8	7/8
Line Size Liquid I.D. (in.)	3/8	3/8	3/8	3/8	3/8	3/8	3/8	3/8	3/8	3/8	3/8	3/8
Controls												
Compressor IPR Valve (psi) Average	500	500	500	500	500	500	500	500	500	500	500	500
High Press. Switch Auto Reset - Open / Close psi	420-300	420-300	420-300	420-300	420-300	420-300	420-300	420-300	420-300	420-300	420-300	420-300
Low Press. Switch Auto Reset - Open- Close psi	5 - 20	5 - 20	5 - 20	5 - 20	5 - 20	5 - 20	5 - 20	5 - 20	5 - 20	5 - 20	5 - 20	5 - 20
Misc.												
Shipping Weight	139	139	139	170	170	170	197	197	197	207	207	207

* Units Shipped with Holding Charge

PERFORMANCE DATA COOLING

Outdoor Model Number	Indoor Model Number	Cooling Capacity (MBtuh)	SEER Rating	EER Rating	Outdoor Coil Air Quantity (SCFM)	Indoor Coil Air Quantity (SCFM)
CAC036(G)HC*	EP*36F****+TD1	35200	10.25	10	2000	1200
CAC036(G)HC*	EP*36B****+TD1	34200	10.25	10	2000	1000
CAC036(G)HC*	EMH36F****+TD1	35000	10.25	10	2000	1200
CAC036(G)HC*	EMH42F****+TD1	35600	10.5	10.2	2000	1100
CAC036(G)HC*	EP*36J****+TD1	35000	10.25	10	2000	1200
CAC036(G)HC*	EP*36J****+NTV6100+TXV	35600	10.8	10.5	2000	1210
CAC036(G)HC*	EP*36J****+NTV6125+TXV	35200	10.8	10.5	2000	1155
CAC036(G)HC*	EP*36J****+*8MPV100+TXV	35600	10.8	10.5	2000	1250
CAC036(G)HC*	EP*36J****+*8MPV125+TXV	35400	10.8	10.5	2000	1240
CAC036(G)HC*	EP*36J****+*9MPV100+TXV	35400	10.8	10.5	2000	1230
CAC036(G)HC*	EP*36J****+*9MPV125+TXV	35400	10.5	10.2	2000	1230
CAC036(G)HC*	EP*36J****+MV12F19****+TXV	35400	10.8	10.5	2000	1240
CAC036(G)HC*	EP*36J****+MV16J22****+TXV	35600	10.8	10.5	2000	1215
CAC036(G)HC*	EP*42F****+TD1	35600	10.25	10	2000	1100
CAC036(G)HC*	EP*42J****+TD1	36000	10.25	10	2000	1200
CAC036(G)HC*	EP*42J****+NTV6100+TXV	35400	10.8	10.5	2000	990
CAC036(G)HC*	EP*42J****+NTV6125+TXV	35400	10.8	10.5	2000	940
CAC036(G)HC*	EP*42J****+*8MPV100+TXV	36000	10.8	10.5	2000	1055
CAC036(G)HC*	EP*42J****+*8MPV125+TXV	35800	10.6	10.3	2000	1035
CAC036(G)HC*	EP*42J****+*9MPV100+TXV	35600	10.6	10.3	2000	1045
CAC036(G)HC*	EP*42J****+*9MPV125+TXV	35600	10.5	10.2	2000	1040
CAC036(G)HC*	EP*42J****+MV12F19****+TXV	35600	10.6	10.3	2000	1065
CAC036(G)HC*	EP*42J****+MV16J22****+TXV	35600	10.8	10.5	2000	1000
CAC036(G)HC*	EP*48N****+NTV6125+TXV	36000	11.3	11	2000	1185
CAC036(G)HC*	EP*48N****+*8MPV125+TXV	36000	11.3	11	2000	1270
CAC036(G)HC*	EP*48N****+*9MPV125+TXV	36000	10.8	10.5	2000	1255
CAC036(G)HC*	EX*36B****+TD1	36000	10.6	10.3	2000	1100
CAC036(G)HC*	EX*36F****+TD1	36000	10.6	10.3	2000	1100
CAC036(G)HC*	EX*36F****+NTV6050	36000	10.8	10.5	2000	1125
CAC036(G)HC*	EX*36F****+NTV6100	36000	11.3	11	2000	1170
CAC036(G)HC*	EX*36F****+NTV6125	36000	11.3	11	2000	1115
CAC036(G)HC*	EX*36F****+*8MPV050	36000	10.25	10	2000	1175
CAC036(G)HC*	EX*36F****+*8MPV100	36000	11.3	11	2000	1210
CAC036(G)HC*	EX*36F****+*8MPV125	36000	11.3	11	2000	1200
CAC036(G)HC*	EX*36F****+*9MPV050	36000	10.25	10	2000	1165
CAC036(G)HC*	EX*36F****+*9MPV100	36000	10.8	10.5	2000	1195
CAC036(G)HC*	EX*36F****+MV12F19****	36000	11.3	11	2000	1210
CAC036(G)HC*	EX*36F****+MV16J22****	36000	11.3	11	2000	1175
CAC036(G)HC*	EX*36J****+TD1	36000	10.6	10.3	2000	1200
CAC036(G)HC*	EX*48N****+NTV6125	37000	11.3	11	2000	1190
CAC036(G)HC*	EX*48N****+*8MPV125	37000	11.3	11	2000	1280
CAC036(G)HC*	EX*48N****+*9MPV125	37000	11.3	11	2000	1260
CAC036(G)HC*	EBP36****	36000	10.25	10	2000	1200
CAC036(G)HC*	EBP42****	37000	10.25	10	2000	1200
CAC036(G)HC*	EBV36****	37000	11.3	11	2000	1200
CAC036(G)HC*	EBX36****	37000	10.8	10.5	2000	1200
CAC036(G)HC*	EMH36F****+TD1+TXV	35000	10.25	10	2000	1200
CAC036(G)HC*	EMH42F****+TD1+TXV	36000	10.55	10.25	2000	1100
CAC036(G)HC*	EP*36B****+TD1+TXV	34000	10.25	10	2000	1000
CAC036(G)HC*	EP*36F****+TD1+TXV	35000	10.25	10	2000	1200
CAC036(G)HC*	EP*36J****+TD1+TXV	35000	10.25	10	2000	1200
CAC036(G)HC*	EP*42F****+TD1+TXV	36000	10.55	10.25	2000	1100
CAC036(G)HC*	EP*42J****+TD1+TXV	36000	10.55	10.25	2000	1200
CAC036(G)LC*	EP*36F****+TD1	35200	10.25	10	2000	1200
CAC036(G)LC*	EP*36B****+TD1	34200	10.25	10	2000	1000
CAC036(G)LC*	EMH36F****+TD1	35000	10.25	10	2000	1200
CAC036(G)LC*	EMH42F****+TD1	35600	10.5	10.2	2000	1100
CAC036(G)LC*	EP*36J****+TD1	35000	10.25	10	2000	1200
CAC036(G)LC*	EP*36J****+NTV6100+TXV	35600	10.8	10.5	2000	1210

Many matches require a pin change. Always check pin size to insure maximum performance. TD1=AMA001TDA Indoor Blower Time Delay Kit, required to make SEER indicated. All products using an electronic fan control satisfy TD1 requirements. TXV=Thermostatic Expansion Valve, TXV153 (AMF153) replaces HTXV1,2 or 3 where listed in ratings, TXV335 (AMF335) Replaces HTXV4 or 5 where listed in ratings. EP* = EPA, EPD, EPM series of coils. EX* = EXA, EXD, EXM series of coils.

PERFORMANCE DATA COOLING

Outdoor Model Number	Indoor Model Number	Cooling Capacity (MBtuh)	SEER Rating	EER Rating	Outdoor Coil Air Quantity (SCFM)	Indoor Coil Air Quantity (SCFM)
CAC036(G)LC*	EP*36J****+NTV6125+TXV	35200	10.8	10.5	2000	1155
CAC036(G)LC*	EP*36J****+*8MPV100+TXV	35600	10.8	10.5	2000	1250
CAC036(G)LC*	EP*36J****+*8MPV125+TXV	35400	10.8	10.5	2000	1240
CAC036(G)LC*	EP*36J****+*9MPV100+TXV	35400	10.8	10.5	2000	1230
CAC036(G)LC*	EP*36J****+*9MPV125+TXV	35400	10.5	10.2	2000	1230
CAC036(G)LC*	EP*36J****+MV12F19****+TXV	35400	10.8	10.5	2000	1240
CAC036(G)LC*	EP*36J****+MV16J22****+TXV	35600	10.8	10.5	2000	1215
CAC036(G)LC*	EP*42F****+TD1	35600	10.25	10	2000	1100
CAC036(G)LC*	EP*42J****+TD1	36000	10.25	10	2000	1200
CAC036(G)LC*	EP*42J****+NTV6100+TXV	35400	10.8	10.5	2000	990
CAC036(G)LC*	EP*42J****+NTV6125+TXV	35400	10.8	10.5	2000	940
CAC036(G)LC*	EP*42J****+*8MPV100+TXV	36000	10.8	10.5	2000	1055
CAC036(G)LC*	EP*42J****+*8MPV125+TXV	35800	10.6	10.3	2000	1035
CAC036(G)LC*	EP*42J****+*9MPV100+TXV	35600	10.6	10.3	2000	1045
CAC036(G)LC*	EP*42J****+*9MPV125+TXV	35600	10.5	10.2	2000	1040
CAC036(G)LC*	EP*42J****+MV12F19****+TXV	35600	10.6	10.3	2000	1065
CAC036(G)LC*	EP*42J****+MV16J22****+TXV	35600	10.8	10.5	2000	1000
CAC036(G)LC*	EP*48N****+NTV6125+TXV	36000	11.3	11	2000	1185
CAC036(G)LC*	EP*48N****+*8MPV125+TXV	36000	11.3	11	2000	1270
CAC036(G)LC*	EP*48N****+*9MPV125+TXV	36000	10.8	10.5	2000	1255
CAC036(G)LC*	EX*36B****+TD1	36000	10.6	10.3	2000	1100
CAC036(G)LC*	EX*36F****+TD1	36000	10.6	10.3	2000	1100
CAC036(G)LC*	EX*36F****+NTV6050	36000	10.8	10.5	2000	1125
CAC036(G)LC*	EX*36F****+NTV6100	36000	11.3	11	2000	1170
CAC036(G)LC*	EX*36F****+NTV6125	36000	11.3	11	2000	1115
CAC036(G)LC*	EX*36F****+*8MPV050	36000	10.25	10	2000	1175
CAC036(G)LC*	EX*36F****+*8MPV100	36000	11.3	11	2000	1210
CAC036(G)LC*	EX*36F****+*8MPV125	36000	11.3	11	2000	1200
CAC036(G)LC*	EX*36F****+*9MPV050	36000	10.25	10	2000	1165
CAC036(G)LC*	EX*36F****+*9MPV100	36000	10.8	10.5	2000	1195
CAC036(G)LC*	EX*36F****+MV12F19****	36000	11.3	11	2000	1210
CAC036(G)LC*	EX*36F****+MV16J22****	36000	11.3	11	2000	1175
CAC036(G)LC*	EX*36J****+TD1	36000	10.6	10.3	2000	1200
CAC036(G)LC*	EX*48N****+NTV6125	37000	11.3	11	2000	1190
CAC036(G)LC*	EX*48N****+*8MPV125	37000	11.3	11	2000	1280
CAC036(G)LC*	EX*48N****+*9MPV125	37000	11.3	11	2000	1260
CAC036(G)LC*	EBP36****	36000	10.25	10	2000	1200
CAC036(G)LC*	EBP42****	37000	10.25	10	2000	1200
CAC036(G)LC*	EBV36****	37000	11.3	11	2000	1200
CAC036(G)LC*	EBX36****	37000	10.8	10.5	2000	1200
CAC036(G)LC*	EMH36F****+TD1+TXV	35000	10.25	10	2000	1200
CAC036(G)LC*	EMH42F****+TD1+TXV	36000	10.55	10.25	2000	1100
CAC036(G)LC*	EP*36B****+TD1+TXV	34000	10.25	10	2000	1000
CAC036(G)LC*	EP*36F****+TD1+TXV	35000	10.25	10	2000	1200
CAC036(G)LC*	EP*36J****+TD1+TXV	35000	10.25	10	2000	1200
CAC036(G)LC*	EP*42F****+TD1+TXV	36000	10.55	10.25	2000	1100
CAC036(G)LC*	EP*42J****+TD1+TXV	36000	10.55	10.25	2000	1200
CAC036(G)SC*	EP*36F****+TD1	35200	10.25	10	2000	1200
CAC036(G)SC*	EP*36B****+TD1	34200	10.25	10	2000	1000
CAC036(G)SC*	EMH36F****+TD1	35000	10.25	10	2000	1200
CAC036(G)SC*	EMH42F****+TD1	35600	10.5	10.2	2000	1100
CAC036(G)SC*	EP*36J****+TD1	35000	10.25	10	2000	1200
CAC036(G)SC*	EP*36J****+NTV6100+TXV	35600	10.8	10.5	2000	1210
CAC036(G)SC*	EP*36J****+NTV6125+TXV	35200	10.8	10.5	2000	1155
CAC036(G)SC*	EP*36J****+*8MPV100+TXV	35600	10.8	10.5	2000	1250
CAC036(G)SC*	EP*36J****+*8MPV125+TXV	35400	10.8	10.5	2000	1240
CAC036(G)SC*	EP*36J****+*9MPV100+TXV	35400	10.8	10.5	2000	1230
CAC036(G)SC*	EP*36J****+*9MPV125+TXV	35400	10.5	10.2	2000	1230
CAC036(G)SC*	EP*36J****+MV12F19****+TXV	35400	10.8	10.5	2000	1240
CAC036(G)SC*	EP*36J****+MV16J22****+TXV	35600	10.8	10.5	2000	1215

Many matches require a pin change. Always check pin size to insure maximum performance. TD1=AMA001TDA Indoor Blower Time Delay Kit, required to make SEER indicated. All products using an electronic fan control satisfy TD1 requirements. TXV=Thermostatic Expansion Valve, TXV153 (AMF153) replaces HTXV1,2 or 3 where listed in ratings, TXV335 (AMF335) Replaces HTXV4 or 5 where listed in ratings. EP* = EPA, EPD, EPM series of coils. EX* = EXA, EXD, EXM series of coils.

PERFORMANCE DATA COOLING

Outdoor Model Number	Indoor Model Number	Cooling Capacity (MBtuh)	SEER Rating	EER Rating	Outdoor Coil Air Quantity (SCFM)	Indoor Coil Air Quantity (SCFM)
CAC036(G)SC*	EP*42F****+TD1	35600	10.25	10	2000	1100
CAC036(G)SC*	EP*42J****+TD1	36000	10.25	10	2000	1200
CAC036(G)SC*	EP*42J****+NTV6100+TXV	35400	10.8	10.5	2000	990
CAC036(G)SC*	EP*42J****+NTV6125+TXV	35400	10.8	10.5	2000	940
CAC036(G)SC*	EP*42J****+8MPV100+TXV	36000	10.8	10.5	2000	1055
CAC036(G)SC*	EP*42J****+8MPV125+TXV	35800	10.6	10.3	2000	1035
CAC036(G)SC*	EP*42J****+9MPV100+TXV	35600	10.6	10.3	2000	1045
CAC036(G)SC*	EP*42J****+9MPV125+TXV	35600	10.5	10.2	2000	1040
CAC036(G)SC*	EP*42J****+MV12F19****+TXV	35600	10.6	10.3	2000	1065
CAC036(G)SC*	EP*42J****+MV16J22****+TXV	35600	10.8	10.5	2000	1000
CAC036(G)SC*	EP*48N****+NTV6125+TXV	36000	11.3	11	2000	1185
CAC036(G)SC*	EP*48N****+8MPV125+TXV	36000	11.3	11	2000	1270
CAC036(G)SC*	EP*48N****+9MPV125+TXV	36000	10.8	10.5	2000	1255
CAC036(G)SC*	EX*36B****+TD1	36000	10.6	10.3	2000	1100
CAC036(G)SC*	EX*36F****+TD1	36000	10.6	10.3	2000	1100
CAC036(G)SC*	EX*36F****+NTV6050	36000	10.8	10.5	2000	1125
CAC036(G)SC*	EX*36F****+NTV6100	36000	11.3	11	2000	1170
CAC036(G)SC*	EX*36F****+NTV6125	36000	11.3	11	2000	1115
CAC036(G)SC*	EX*36F****+8MPV050	36000	10.25	10	2000	1175
CAC036(G)SC*	EX*36F****+8MPV100	36000	11.3	11	2000	1210
CAC036(G)SC*	EX*36F****+8MPV125	36000	11.3	11	2000	1200
CAC036(G)SC*	EX*36F****+9MPV050	36000	10.25	10	2000	1165
CAC036(G)SC*	EX*36F****+9MPV100	36000	10.8	10.5	2000	1195
CAC036(G)SC*	EX*36F****+MV12F19****	36000	11.3	11	2000	1210
CAC036(G)SC*	EX*36F****+MV16J22****	36000	11.3	11	2000	1175
CAC036(G)SC*	EX*36J****+TD1	36000	10.6	10.3	2000	1200
CAC036(G)SC*	EX*48N****+NTV6125	37000	11.3	11	2000	1190
CAC036(G)SC*	EX*48N****+8MPV125	37000	11.3	11	2000	1280
CAC036(G)SC*	EX*48N****+9MPV125	37000	11.3	11	2000	1260
CAC036(G)SC*	EBP36****	36000	10.25	10	2000	1200
CAC036(G)SC*	EBP42****	37000	10.25	10	2000	1200
CAC036(G)SC*	EBV36****	37000	11.3	11	2000	1200
CAC036(G)SC*	EBX36****	37000	10.8	10.5	2000	1200
CAC036(G)SC*	EMH36F****+TD1+TXV	35000	10.25	10	2000	1200
CAC036(G)SC*	EMH42F****+TD1+TXV	36000	10.55	10.25	2000	1100
CAC036(G)SC*	EP*36B****+TD1+TXV	34000	10.25	10	2000	1000
CAC036(G)SC*	EP*36F****+TD1+TXV	35000	10.25	10	2000	1200
CAC036(G)SC*	EP*36J****+TD1+TXV	35000	10.25	10	2000	1200
CAC036(G)SC*	EP*42F****+TD1+TXV	36000	10.55	10.25	2000	1100
CAC036(G)SC*	EP*42J****+TD1+TXV	36000	10.55	10.25	2000	1200
CAC042(G)HC*	EP*42J****+TD1	41000	10.2	10	2000	1400
CAC042(G)HC*	EP*42F****+TD1	39500	10.2	10	2000	1100
CAC042(G)HC*	EMH42F****+TD1	39500	10.2	10	2000	1100
CAC042(G)HC*	EMH48F****+TD1	41000	10.2	10	2000	1300
CAC042(G)HC*	EP*42J****+MV16J22****+TXV	41000	10.45	10.25	2000	1435
CAC042(G)HC*	EP*42J****+TD1	41000	10.2	10	2000	1400
CAC042(G)HC*	EP*42J****+NTV6100+TXV	41000	10.45	10.25	2000	1385
CAC042(G)HC*	EP*42J****+NTV6125+TXV	41000	10.45	10.25	2000	1360
CAC042(G)HC*	EP*42J****+8MPV100+TXV	41000	10.2	10	2000	1425
CAC042(G)HC*	EP*42J****+8MPV125+TXV	39500	10.2	10	2000	1395
CAC042(G)HC*	EP*48F****+TD1	41000	10.2	10	2000	1300
CAC042(G)HC*	EP*48J****+TD1	42000	10.2	10	2000	1400
CAC042(G)HC*	EP*48N****+TD1	42000	10.2	10	2000	1400
CAC042(G)HC*	EP*48N****+NTV6100+TXV	42000	10.7	10.5	2000	1420
CAC042(G)HC*	EP*48N****+NTV6125+TXV	42000	11.2	11	2000	1360
CAC042(G)HC*	EP*48N****+8MPV100+TXV	42000	10.7	10.5	2000	1420
CAC042(G)HC*	EP*48N****+8MPV125+TXV	42000	10.7	10.5	2000	1425
CAC042(G)HC*	EP*48N****+9MPV100+TXV	42000	10.5	10.3	2000	1430
CAC042(G)HC*	EP*48N****+9MPV125+TXV	42000	10.5	10.3	2000	1425
CAC042(G)HC*	EP*48N****+MV16J22****+TXV	42000	11.2	11	2000	1430

Many matches require a pin change. Always check pin size to insure maximum performance. TD1=AMA001TDA Indoor Blower Time Delay Kit, required to make SEER indicated. All products using an electronic fan control satisfy TD1 requirements. TXV=Thermostatic Expansion Valve, TXV153 (AMF153) replaces HTXV1,2 or 3 where listed in ratings, TXV335 (AMF335) Replaces HTXV4 or 5 where listed in ratings. EP*= EPA, EPD, EPM series of coils. EX* = EXA, EXD, EXM series of coils.

PERFORMANCE DATA COOLING

Outdoor Model Number	Indoor Model Number	Cooling Capacity (MBtuh)	SEER Rating	EER Rating	Outdoor Coil Air Quantity (SCFM)	Indoor Coil Air Quantity (SCFM)
CAC042(G)HC*	EX*42F****+TD1	41500	10.5	10.3	2000	1200
CAC042(G)HC*	EX*42J****+TD1	41500	10.5	10.3	2000	1200
CAC042(G)HC*	EX*42J****+NTV6100	42000	11.2	11	2000	1375
CAC042(G)HC*	EX*42J****+NTV6125	42000	11.2	11	2000	1315
CAC042(G)HC*	EX*42J****+*8MPV100	42000	10.7	10.5	2000	1375
CAC042(G)HC*	EX*42J****+*8MPV125	42000	10.7	10.5	2000	1380
CAC042(G)HC*	EX*42J****+*9MPV100	42000	10.7	10.5	2000	1390
CAC042(G)HC*	EX*42J****+*9MPV125	42000	10.45	10.25	2000	1385
CAC042(G)HC*	EX*42J****+MV16J22****	42000	11.2	11	2000	1385
CAC042(G)HC*	EX*48J****+TD1	42000	10.45	10.25	2000	1400
CAC042(G)HC*	EX*48N****+TD1	42000	10.45	10.25	2000	1400
CAC042(G)HC*	EX*48N****+NTV6125	42500	11.2	11	2000	1375
CAC042(G)HC*	EX*48N****+*8MPV125	42500	10.7	10.5	2000	1445
CAC042(G)HC*	EX*48N****+*9MPV125	42500	10.7	10.5	2000	1435
CAC042(G)HC*	EX*48N****+MV16J22****	42500	11.2	11	2000	1440
CAC042(G)HC*	EBP42****	41000	10.2	10	2000	1400
CAC042(G)HC*	EBP48****	42000	10.2	10	2000	1400
CAC042(G)HC*	EBV48****	43000	11.2	11	2000	1400
CAC042(G)HC*	EBX48****	42500	10.7	10.5	2000	1400
CAC042(G)HC*	EMH42F****+TD1+TXV	39500	10.45	10.25	2000	1100
CAC042(G)HC*	EMH48F****+TD1+TXV	41000	10.45	10.25	2000	1300
CAC042(G)HC*	EP*42F****+TD1+TXV	39500	10.45	10.25	2000	1100
CAC042(G)HC*	EP*42J****+TD1+TXV	40000	10.45	10.25	2000	1200
CAC042(G)HC*	EP*48F****+TD1+TXV	41000	10.45	10.25	2000	1300
CAC042(G)HC*	EP*48J****+TD1+TXV	41500	10.45	10.25	2000	1400
CAC042(G)HC*	EP*48N****+TD1+TXV	41500	10.45	10.25	2000	1400
CAC042(G)LC*	EP*42J****+TD1	41000	10.2	10	2000	1400
CAC042(G)LC*	EP*42F****+TD1	39500	10.2	10	2000	1100
CAC042(G)LC*	EMH42F****+TD1	39500	10.2	10	2000	1100
CAC042(G)LC*	EMH48F****+TD1	41000	10.2	10	2000	1300
CAC042(G)LC*	EP*42J****+MV16J22****+TXV	41000	10.45	10.25	2000	1435
CAC042(G)LC*	EP*42J****+TD1	41000	10.2	10	2000	1400
CAC042(G)LC*	EP*42J****+NTV6100+TXV	41000	10.45	10.25	2000	1385
CAC042(G)LC*	EP*42J****+NTV6125+TXV	41000	10.45	10.25	2000	1360
CAC042(G)LC*	EP*42J****+*8MPV100+TXV	41000	10.2	10	2000	1425
CAC042(G)LC*	EP*42J****+*8MPV125+TXV	39500	10.2	10	2000	1395
CAC042(G)LC*	EP*48F****+TD1	41000	10.2	10	2000	1300
CAC042(G)LC*	EP*48J****+TD1	42000	10.2	10	2000	1400
CAC042(G)LC*	EP*48N****+TD1	42000	10.2	10	2000	1400
CAC042(G)LC*	EP*48N****+NTV6100+TXV	42000	10.7	10.5	2000	1420
CAC042(G)LC*	EP*48N****+NTV6125+TXV	42000	11.2	11	2000	1360
CAC042(G)LC*	EP*48N****+*8MPV100+TXV	42000	10.7	10.5	2000	1420
CAC042(G)LC*	EP*48N****+*8MPV125+TXV	42000	10.7	10.5	2000	1425
CAC042(G)LC*	EP*48N****+*9MPV100+TXV	42000	10.5	10.3	2000	1430
CAC042(G)LC*	EP*48N****+*9MPV125+TXV	42000	10.5	10.3	2000	1425
CAC042(G)LC*	EP*48N****+MV16J22****+TXV	42000	11.2	11	2000	1430
CAC042(G)LC*	EX*42F****+TD1	41500	10.5	10.3	2000	1200
CAC042(G)LC*	EX*42J****+TD1	41500	10.5	10.3	2000	1200
CAC042(G)LC*	EX*42J****+NTV6100	42000	11.2	11	2000	1375
CAC042(G)LC*	EX*42J****+NTV6125	42000	11.2	11	2000	1315
CAC042(G)LC*	EX*42J****+*8MPV100	42000	10.7	10.5	2000	1375
CAC042(G)LC*	EX*42J****+*8MPV125	42000	10.7	10.5	2000	1380
CAC042(G)LC*	EX*42J****+*9MPV100	42000	10.7	10.5	2000	1390
CAC042(G)LC*	EX*42J****+*9MPV125	42000	10.45	10.25	2000	1385
CAC042(G)LC*	EX*42J****+MV16J22****	42000	11.2	11	2000	1385
CAC042(G)LC*	EX*48J****+TD1	42000	10.45	10.25	2000	1400
CAC042(G)LC*	EX*48N****+TD1	42000	10.45	10.25	2000	1400
CAC042(G)LC*	EX*48N****+NTV6125	42500	11.2	11	2000	1375
CAC042(G)LC*	EX*48N****+*8MPV125	42500	10.7	10.5	2000	1445
CAC042(G)LC*	EX*48N****+*9MPV125	42500	10.7	10.5	2000	1435

Many matches require a pin change. Always check pin size to insure maximum performance. TD1=AMA001TDA Indoor Blower Time Delay Kit, required to make SEER indicated. All products using an electronic fan control satisfy TD1 requirements. TXV=Thermostatic Expansion Valve, TXV153 (AMF153) replaces HTXV1,2 or 3 where listed in ratings, TXV335 (AMF335) Replaces HTXV4 or 5 where listed in ratings. EP* = EPA, EPD, EPM series of coils. EX* = EXA, EXD, EXM series of coils.

PERFORMANCE DATA COOLING

Outdoor Model Number	Indoor Model Number	Cooling Capacity (MBtuh)	SEER Rating	EER Rating	Outdoor Coil Air Quantity (SCFM)	Indoor Coil Air Quantity (SCFM)
CAC042(G)LC*	EX*48N****+MV16J22****	42500	11.2	11	2000	1440
CAC042(G)LC*	EBP42****	41000	10.2	10	2000	1400
CAC042(G)LC*	EBP48****	42000	10.2	10	2000	1400
CAC042(G)LC*	EBV48****	43000	11.2	11	2000	1400
CAC042(G)LC*	EBX48****	42500	10.7	10.5	2000	1400
CAC042(G)LC*	EMH42F****+TD1+TXV	39500	10.45	10.25	2000	1100
CAC042(G)LC*	EMH48F****+TD1+TXV	41000	10.45	10.25	2000	1300
CAC042(G)LC*	EP*42F****+TD1+TXV	39500	10.45	10.25	2000	1100
CAC042(G)LC*	EP*42J****+TD1+TXV	40000	10.45	10.25	2000	1200
CAC042(G)LC*	EP*48F****+TD1+TXV	41000	10.45	10.25	2000	1300
CAC042(G)LC*	EP*48J****+TD1+TXV	41500	10.45	10.25	2000	1400
CAC042(G)LC*	EP*48N****+TD1+TXV	41500	10.45	10.25	2000	1400
CAC042(G)SC*	EP*42J****+TD1	41000	10.2	10	2000	1400
CAC042(G)SC*	EP*42F****+TD1	39500	10.2	10	2000	1100
CAC042(G)SC*	EMH42F****+TD1	39500	10.2	10	2000	1100
CAC042(G)SC*	EMH48F****+TD1	41000	10.2	10	2000	1300
CAC042(G)SC*	EP*42J****+MV16J22****+TXV	41000	10.45	10.25	2000	1435
CAC042(G)SC*	EP*42J****+TD1	41000	10.2	10	2000	1400
CAC042(G)SC*	EP*42J****+NTV6100+TXV	41000	10.45	10.25	2000	1385
CAC042(G)SC*	EP*42J****+NTV6125+TXV	41000	10.45	10.25	2000	1360
CAC042(G)SC*	EP*42J****+*8MPV100+TXV	41000	10.2	10	2000	1425
CAC042(G)SC*	EP*42J****+*8MPV125+TXV	39500	10.2	10	2000	1395
CAC042(G)SC*	EP*48F****+TD1	41000	10.2	10	2000	1300
CAC042(G)SC*	EP*48J****+TD1	42000	10.2	10	2000	1400
CAC042(G)SC*	EP*48N****+TD1	42000	10.2	10	2000	1400
CAC042(G)SC*	EP*48N****+NTV6100+TXV	42000	10.7	10.5	2000	1420
CAC042(G)SC*	EP*48N****+NTV6125+TXV	42000	11.2	11	2000	1360
CAC042(G)SC*	EP*48N****+*8MPV100+TXV	42000	10.7	10.5	2000	1420
CAC042(G)SC*	EP*48N****+*8MPV125+TXV	42000	10.7	10.5	2000	1425
CAC042(G)SC*	EP*48N****+*9MPV100+TXV	42000	10.5	10.3	2000	1430
CAC042(G)SC*	EP*48N****+*9MPV125+TXV	42000	10.5	10.3	2000	1425
CAC042(G)SC*	EP*48N****+MV16J22****+TXV	42000	11.2	11	2000	1430
CAC042(G)SC*	EX*42F****+TD1	41500	10.5	10.3	2000	1200
CAC042(G)SC*	EX*42J****+TD1	41500	10.5	10.3	2000	1200
CAC042(G)SC*	EX*42J****+NTV6100	42000	11.2	11	2000	1375
CAC042(G)SC*	EX*42J****+NTV6125	42000	11.2	11	2000	1315
CAC042(G)SC*	EX*42J****+*8MPV100	42000	10.7	10.5	2000	1375
CAC042(G)SC*	EX*42J****+*8MPV125	42000	10.7	10.5	2000	1380
CAC042(G)SC*	EX*42J****+*9MPV100	42000	10.7	10.5	2000	1390
CAC042(G)SC*	EX*42J****+*9MPV125	42000	10.45	10.25	2000	1385
CAC042(G)SC*	EX*42J****+MV16J22****	42000	11.2	11	2000	1385
CAC042(G)SC*	EX*48J****+TD1	42000	10.45	10.25	2000	1400
CAC042(G)SC*	EX*48N****+TD1	42000	10.45	10.25	2000	1400
CAC042(G)SC*	EX*48N****+NTV6125	42500	11.2	11	2000	1375
CAC042(G)SC*	EX*48N****+*8MPV125	42500	10.7	10.5	2000	1445
CAC042(G)SC*	EX*48N****+*9MPV125	42500	10.7	10.5	2000	1435
CAC042(G)SC*	EX*48N****+MV16J22****	42500	11.2	11	2000	1440
CAC042(G)SC*	EBP42****	41000	10.2	10	2000	1400
CAC042(G)SC*	EBP48****	42000	10.2	10	2000	1400
CAC042(G)SC*	EBV48****	43000	11.2	11	2000	1400
CAC042(G)SC*	EBX48****	42500	10.7	10.5	2000	1400
CAC042(G)SC*	EMH42F****+TD1+TXV	39500	10.45	10.25	2000	1100
CAC042(G)SC*	EMH48F****+TD1+TXV	41000	10.45	10.25	2000	1300
CAC042(G)SC*	EP*42F****+TD1+TXV	39500	10.45	10.25	2000	1100
CAC042(G)SC*	EP*42J****+TD1+TXV	40000	10.45	10.25	2000	1200
CAC042(G)SC*	EP*48F****+TD1+TXV	41000	10.45	10.25	2000	1300
CAC042(G)SC*	EP*48J****+TD1+TXV	41500	10.45	10.25	2000	1400
CAC042(G)SC*	EP*48N****+TD1+TXV	41500	10.45	10.25	2000	1400
CAC048(G)HC*	EP*48L****+TD1	47000	10.25	10	3100	1600
CAC048(G)HC*	EP*48F****+TD1	45000	10.8	10.5	3100	1300

Many matches require a pin change. Always check pin size to insure maximum performance. TD1=AMA001TDA Indoor Blower Time Delay Kit, required to make SEER indicated. All products using an electronic fan control satisfy TD1 requirements. TXV=Thermostatic Expansion Valve, TXV153 (AMF153) replaces HTXV1, 2 or 3 where listed in ratings, TXV335 (AMF335) Replaces HTXV4 or 5 where listed in ratings. EP* = EPA, EPD, EPM series of coils. EX* = EXA, EXD, EXM series of coils.

PERFORMANCE DATA COOLING

Outdoor Model Number	Indoor Model Number	Cooling Capacity (MBtuh)	SEER Rating	EER Rating	Outdoor Coil Air Quantity (SCFM)	Indoor Coil Air Quantity (SCFM)
CAC048(G)HC*	EMH48F****+TD1	45500	10.8	10.5	3100	1300
CAC048(G)HC*	EP*48J****+TD1	46000	10.8	10.5	3100	1400
CAC048(G)HC*	EP*48J****+NTV6100+TXV	47000	11.3	11	3100	1545
CAC048(G)HC*	EP*48J****+NTV6125+TXV	46500	11.3	11	3100	1510
CAC048(G)HC*	EP*48J****+*8MPV100+TXV	46500	10.8	10.5	3100	1565
CAC048(G)HC*	EP*48J****+*8MPV125+TXV	46500	10.8	10.5	3100	1550
CAC048(G)HC*	EP*48J****+*9MPV100+TXV	46500	10.8	10.5	3100	1580
CAC048(G)HC*	EP*48J****+*9MPV125+TXV	46500	10.6	10.3	3100	1580
CAC048(G)HC*	EP*48J****+MV20N26****+TXV	47000	11.3	11	3100	1590
CAC048(G)HC*	EP*48N****+TD1	46000	10.8	10.5	3100	1400
CAC048(G)HC*	EP*60J****+TD1	47500	10.8	10.5	3100	1600
CAC048(G)HC*	EP*60J****+NTV6100+TXV	48000	11.3	11	3100	1610
CAC048(G)HC*	EP*60J****+NTV6125+TXV	48000	11.3	11	3100	1580
CAC048(G)HC*	EP*60J****+*8MPV100+TXV	47500	11.3	11	3100	1630
CAC048(G)HC*	EP*60J****+*8MPV125+TXV	47500	11.3	11	3100	1620
CAC048(G)HC*	EP*60J****+*9MPV100+TXV	47500	10.8	10.5	3100	1635
CAC048(G)HC*	EP*60J****+*9MPV125+TXV	47500	10.8	10.5	3100	1635
CAC048(G)HC*	EP*60J****+MV20N26****+TXV	48000	11.3	11	3100	1665
CAC048(G)HC*	EP*60N****+TD1	47500	10.8	10.5	3100	1600
CAC048(G)HC*	EX*48J****+TD1	47000	10.8	10.5	3100	1500
CAC048(G)HC*	EX*48N****+TD1	47000	10.8	10.5	3100	1500
CAC048(G)HC*	EX*48N****+NTV6125	47500	11.3	11	3100	1540
CAC048(G)HC*	EX*48N****+*8MPV125	47500	11.3	11	3100	1580
CAC048(G)HC*	EX*48N****+*9MPV125	47500	10.8	10.5	3100	1605
CAC048(G)HC*	EX*48N****+MV20N26****	48000	11.3	11	3100	1625
CAC048(G)HC*	EBP48****	47500	10.8	10.5	3100	1600
CAC048(G)HC*	EBP60****	48000	10.8	10.5	3100	1600
CAC048(G)HC*	EBV48****	48000	11.3	11	3100	1600
CAC048(G)HC*	EBX48****	48000	10.8	10.5	3100	1600
CAC048(G)HC*	EBX60****	48000	10.8	10.5	3100	1600
CAC048(G)HC*	EP*48F****+TD1+TXV	45000	10.8	10.5	3100	1300
CAC048(G)HC*	EP*48J****+TD1+TXV	46000	10.8	10.5	3100	1400
CAC048(G)HC*	EP*48N****+TD1+TXV	46000	10.8	10.5	3100	1400
CAC048(G)HC*	EP*60J****+TD1+TXV	47500	10.8	10.5	3100	1600
CAC048(G)HC*	EP*60N****+TD1+TXV	47500	10.8	10.5	3100	1600
CAC048(G)LC*	EP*48L****+TD1	47000	10.25	10	3100	1600
CAC048(G)LC*	EP*48F****+TD1	45000	10.8	10.5	3100	1300
CAC048(G)LC*	EMH48F****+TD1	45500	10.8	10.5	3100	1300
CAC048(G)LC*	EP*48J****+TD1	46000	10.8	10.5	3100	1400
CAC048(G)LC*	EP*48J****+NTV6100+TXV	47000	11.3	11	3100	1545
CAC048(G)LC*	EP*48J****+NTV6125+TXV	46500	11.3	11	3100	1510
CAC048(G)LC*	EP*48J****+*8MPV100+TXV	46500	10.8	10.5	3100	1565
CAC048(G)LC*	EP*48J****+*8MPV125+TXV	46500	10.8	10.5	3100	1550
CAC048(G)LC*	EP*48J****+*9MPV100+TXV	46500	10.8	10.5	3100	1580
CAC048(G)LC*	EP*48J****+*9MPV125+TXV	46500	10.6	10.3	3100	1580
CAC048(G)LC*	EP*48J****+MV20N26****+TXV	47000	11.3	11	3100	1590
CAC048(G)LC*	EP*48N****+TD1	46000	10.8	10.5	3100	1400
CAC048(G)LC*	EP*60J****+TD1	47500	10.8	10.5	3100	1600
CAC048(G)LC*	EP*60J****+NTV6100+TXV	48000	11.3	11	3100	1610
CAC048(G)LC*	EP*60J****+NTV6125+TXV	48000	11.3	11	3100	1580
CAC048(G)LC*	EP*60J****+*8MPV100+TXV	47500	11.3	11	3100	1630
CAC048(G)LC*	EP*60J****+*8MPV125+TXV	47500	11.3	11	3100	1620
CAC048(G)LC*	EP*60J****+*9MPV100+TXV	47500	10.8	10.5	3100	1635
CAC048(G)LC*	EP*60J****+*9MPV125+TXV	47500	10.8	10.5	3100	1635
CAC048(G)LC*	EP*60J****+MV20N26****+TXV	48000	11.3	11	3100	1665
CAC048(G)LC*	EP*60N****+TD1	47500	10.8	10.5	3100	1600
CAC048(G)LC*	EX*48J****+TD1	47000	10.8	10.5	3100	1500
CAC048(G)LC*	EX*48N****+TD1	47000	10.8	10.5	3100	1500
CAC048(G)LC*	EX*48N****+NTV6125	47500	11.3	11	3100	1540
CAC048(G)LC*	EX*48N****+*8MPV125	47500	11.3	11	3100	1580

Many matches require a pin change. Always check pin size to insure maximum performance. TD1=AMA001TDA Indoor Blower Time Delay Kit, required to make SEER indicated. All products using an electronic fan control satisfy TD1 requirements. TXV=Thermostatic Expansion Valve, TXV153 (AMF153) replaces HTXV1, 2 or 3 where listed in ratings, TXV335 (AMF335) Replaces HTXV4 or 5 where listed in ratings. EP* = EPA, EPD, EPM series of coils. EX* = EXA, EXD, EXM series of coils.

PERFORMANCE DATA COOLING

Outdoor Model Number	Indoor Model Number	Cooling Capacity (MBtuh)	SEER Rating	EER Rating	Outdoor Coil Air Quantity (SCFM)	Indoor Coil Air Quantity (SCFM)
CAC048(G)LC*	EX*48N****+*9MPV125	47500	10.8	10.5	3100	1605
CAC048(G)LC*	EX*48N****+MV20N26****	48000	11.3	11	3100	1625
CAC048(G)LC*	EBP48****	47500	10.8	10.5	3100	1600
CAC048(G)LC*	EBP60****	48000	10.8	10.5	3100	1600
CAC048(G)LC*	EBV48****	48000	11.3	11	3100	1600
CAC048(G)LC*	EBX48****	48000	10.8	10.5	3100	1600
CAC048(G)LC*	EBX60****	48000	10.8	10.5	3100	1600
CAC048(G)LC*	EP*48F****+TD1+TXV	45000	10.8	10.5	3100	1300
CAC048(G)LC*	EP*48J****+TD1+TXV	46000	10.8	10.5	3100	1400
CAC048(G)LC*	EP*48N****+TD1+TXV	46000	10.8	10.5	3100	1400
CAC048(G)LC*	EP*60J****+TD1+TXV	47500	10.8	10.5	3100	1600
CAC048(G)LC*	EP*60N****+TD1+TXV	47500	10.8	10.5	3100	1600
CAC048(G)SC*	EP*48L****+TD1	47000	10.25	10	3100	1600
CAC048(G)SC*	EP*48F****+TD1	45000	10.8	10.5	3100	1300
CAC048(G)SC*	EMH48F****+TD1	45500	10.8	10.5	3100	1300
CAC048(G)SC*	EP*48J****+TD1	46000	10.8	10.5	3100	1400
CAC048(G)SC*	EP*48J****+NTV6100+TXV	47000	11.3	11	3100	1545
CAC048(G)SC*	EP*48J****+NTV6125+TXV	46500	11.3	11	3100	1510
CAC048(G)SC*	EP*48J****+*8MPV100+TXV	46500	10.8	10.5	3100	1565
CAC048(G)SC*	EP*48J****+*8MPV125+TXV	46500	10.8	10.5	3100	1550
CAC048(G)SC*	EP*48J****+*9MPV100+TXV	46500	10.8	10.5	3100	1580
CAC048(G)SC*	EP*48J****+*9MPV125+TXV	46500	10.6	10.3	3100	1580
CAC048(G)SC*	EP*48J****+MV20N26****+TXV	47000	11.3	11	3100	1590
CAC048(G)SC*	EP*48N****+TD1	46000	10.8	10.5	3100	1400
CAC048(G)SC*	EP*60J****+TD1	47500	10.8	10.5	3100	1600
CAC048(G)SC*	EP*60J****+NTV6100+TXV	48000	11.3	11	3100	1610
CAC048(G)SC*	EP*60J****+NTV6125+TXV	48000	11.3	11	3100	1580
CAC048(G)SC*	EP*60J****+*8MPV100+TXV	47500	11.3	11	3100	1630
CAC048(G)SC*	EP*60J****+*8MPV125+TXV	47500	11.3	11	3100	1620
CAC048(G)SC*	EP*60J****+*9MPV100+TXV	47500	10.8	10.5	3100	1635
CAC048(G)SC*	EP*60J****+*9MPV125+TXV	47500	10.8	10.5	3100	1635
CAC048(G)SC*	EP*60J****+MV20N26****+TXV	48000	11.3	11	3100	1665
CAC048(G)SC*	EP*60N****+TD1	47500	10.8	10.5	3100	1600
CAC048(G)SC*	EX*48J****+TD1	47000	10.8	10.5	3100	1500
CAC048(G)SC*	EX*48N****+TD1	47000	10.8	10.5	3100	1500
CAC048(G)SC*	EX*48N****+NTV6125	47500	11.3	11	3100	1540
CAC048(G)SC*	EX*48N****+*8MPV125	47500	11.3	11	3100	1580
CAC048(G)SC*	EX*48N****+*9MPV125	47500	10.8	10.5	3100	1605
CAC048(G)SC*	EX*48N****+MV20N26****	48000	11.3	11	3100	1625
CAC048(G)SC*	EBP48****	47500	10.8	10.5	3100	1600
CAC048(G)SC*	EBP60****	48000	10.8	10.5	3100	1600
CAC048(G)SC*	EBV48****	48000	11.3	11	3100	1600
CAC048(G)SC*	EBX48****	48000	10.8	10.5	3100	1600
CAC048(G)SC*	EBX60****	48000	10.8	10.5	3100	1600
CAC048(G)SC*	EP*48F****+TD1+TXV	45000	10.8	10.5	3100	1300
CAC048(G)SC*	EP*48J****+TD1+TXV	46000	10.8	10.5	3100	1400
CAC048(G)SC*	EP*48N****+TD1+TXV	46000	10.8	10.5	3100	1400
CAC048(G)SC*	EP*60J****+TD1+TXV	47500	10.8	10.5	3100	1600
CAC048(G)SC*	EP*60N****+TD1+TXV	47500	10.8	10.5	3100	1600
CAC060(G)HC*	EP*60N****+TD1	56500	10.15	10	3100	1750
CAC060(G)HC*	EP*60J****+TD1	56000	10.15	10	3100	1750
CAC060(G)HC*	EX*60N****+TD1	59000	10.15	10	3100	1700
CAC060(G)HC*	EX*60N****+NTV6125	59000	10.45	10.3	3100	1840
CAC060(G)HC*	EX*60N****+MV20N26****	59000	10.65	10.5	3100	1830
CAC060(G)HC*	EBP60****	58000	10.15	10	3100	1700
CAC060(G)HC*	EBV60****	59000	10.65	10.5	3100	1700
CAC060(G)HC*	EBX60****	59000	10.15	10	3100	1700
CAC060(G)HC*	EP*60J****+TD1+TXV	56000	10.15	10	3100	1750
CAC060(G)HC*	EP*60N****+TD1+TXV	56000	10.15	10	3100	1750
CAC060(G)LC*	EP*60N****+TD1	56500	10.15	10	3100	1750

Many matches require a pin change. Always check pin size to insure maximum performance. TD1=AMA001TDA Indoor Blower Time Delay Kit, required to make SEER indicated. All products using an electronic fan control satisfy TD1 requirements. TXV=Thermostatic Expansion Valve, TXV153 (AMF153) replaces HTXV1, 2 or 3 where listed in ratings, TXV335 (AMF335) Replaces HTXV4 or 5 where listed in ratings. EP* = EPA, EPD, EPM series of coils. EX* = EXA, EXD, EXM series of coils.

PERFORMANCE DATA COOLING

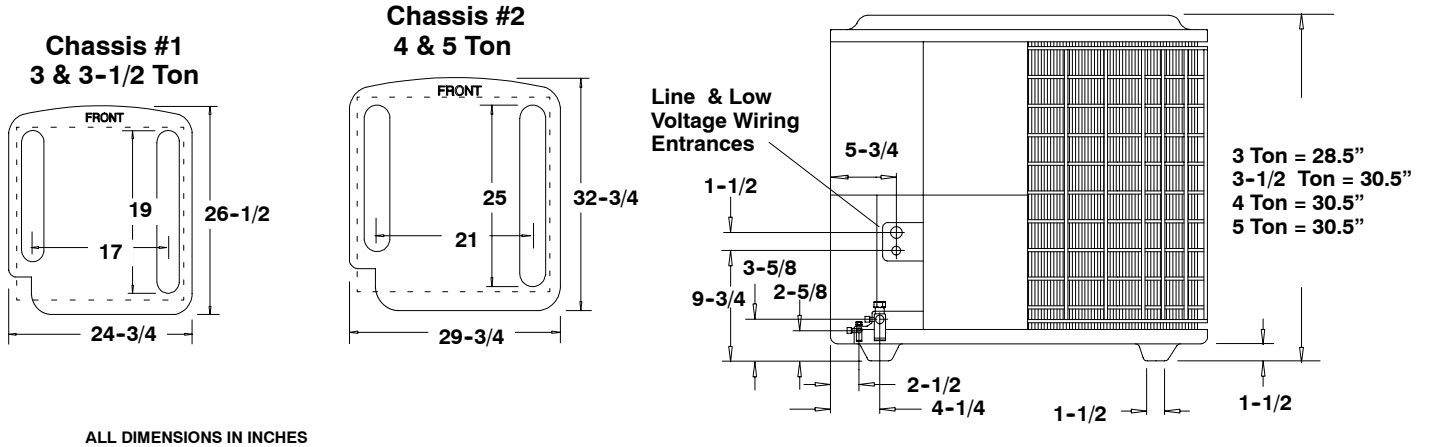
Outdoor Model Number	Indoor Model Number	Cooling Capacity (MBtuh)	SEER Rating	EER Rating	Outdoor Coil Air Quantity (SCFM)	Indoor Coil Air Quantity (SCFM)
CAC060(G)LC*	EP*60J****+TD1	56000	10.15	10	3100	1750
CAC060(G)LC*	EX*60N****+TD1	59000	10.15	10	3100	1700
CAC060(G)LC*	EX*60N****+NTV6125	59000	10.45	10.3	3100	1840
CAC060(G)LC*	EX*60N****+MV20N26****	59000	10.65	10.5	3100	1830
CAC060(G)LC*	EBP60****	58000	10.15	10	3100	1700
CAC060(G)LC*	EBV60****	59000	10.65	10.5	3100	1700
CAC060(G)LC*	EBX60****	59000	10.15	10	3100	1700
CAC060(G)LC*	EP*60J****+TD1+TXV	56000	10.15	10	3100	1750
CAC060(G)LC*	EP*60N****+TD1+TXV	56000	10.15	10	3100	1750
CAC060(G)SC*	EP*60N****+TD1	56500	10.15	10	3100	1750
CAC060(G)SC*	EP*60J****+TD1	56000	10.15	10	3100	1750
CAC060(G)SC*	EX*60N****+TD1	59000	10.15	10	3100	1700
CAC060(G)SC*	EX*60N****+NTV6125	59000	10.45	10.3	3100	1840
CAC060(G)SC*	EX*60N****+MV20N26****	59000	10.65	10.5	3100	1830
CAC060(G)SC*	EBP60****	58000	10.15	10	3100	1700
CAC060(G)SC*	EBV60****	59000	10.65	10.5	3100	1700
CAC060(G)SC*	EBX60****	59000	10.15	10	3100	1700
CAC060(G)SC*	EP*60J****+TD1+TXV	56000	10.15	10	3100	1750
CAC060(G)SC*	EP*60N****+TD1+TXV	56000	10.15	10	3100	1750

Many matches require a pin change. Always check pin size to insure maximum performance. TD1=AMA001TDA Indoor Blower Time Delay Kit, required to make SEER indicated. All products using an electronic fan control satisfy TD1 requirements. TXV=Thermostatic Expansion Valve, TXV153 (AMF153) replaces HTXV1,2 or 3 where listed in ratings, TXV335 (AMF335) Replaces HTXV4 or 5 where listed in ratings. EP* = EPA, EPD, EPM series of coils. EX* = EXA, EXD, EXM series of coils.

DIMENSIONS AND ACCESSORIES

Minimum Mounting Pad Sizes with pad starting at 9" from structure for minimum clearance of 6".

Chassis #1 20" W X 20" D
 Chassis #2 24" W X 26" D



Accessory	Description	Used On
AMB001CMA	Enhanced Coil Guard (Package of 6 oversized pieces)	All Models
AMF153TKB	Expansion Valve Kit	3 Ton
AMF355TKB	Expansion Valve Kit	3 1/2 - 5 Ton
AMA001TDA	Indoor Blower Time Delay	All Models
24370800 *	Compressor Anti-short cycle 24 Volt 3 Min. Time Delay	All Models
1070822*	Compressor Anti-short cycle 24 Volt 5 Min. Time Delay	All Models
1053477 *	Compressor Crankcase Heater Solid State "Stick On" Type	230V Models
1148113 *	Compressor Crankcase Heater "Wrap-around" Type	230V Models
1060833*	Compressor Sound Jacket (Small Scroll)	3 Ton
1060834 *	Compressor Sound Jacket (Large Scroll)	3 1/2 - 5 Ton

* Order from Service Parts

MODEL NUMBER IDENTIFICATION GUIDE

MODEL NUMBER	C	A	C	036	H	C	SALES CODE			
PRODUCT FAMILY	C = Condenser						ELECTRICAL			
PRODUCT TYPE	A = Air Conditioning H = Heat Pump C = Cabinet						CODE	VOLTS	PHASE	CYCLE
SERIES	C = 10-11 SEER Series						H	208/230	3	60
							L	460	3	60
							S	575	3	60
							CAPACITY MBTUH			
							036 = 36,000			

EXTENDED REFRIGERANT LINE CORRECTION FACTORS

Varying Line Length in Feet (m) vs. Total Capacity Multiplier

25 (8)	50 (15)	75 (23)	100 (30)	125 (38)	150 (46)
1.00	.99	.98	.96	.94	.92

REFRIGERANT CHARGE DATA

Refrigerant charge correction per foot (305mm) of line:
 1/4" O.D. = .25 oz.; 5/16" O.D. = .45 oz.; 3/8" O.D. = .60 oz.;
 1/2" O.D. = 1.2 oz.

VOLTAGE CORRECTION FACTORS

Volts	Capacity	Watts
208	.98	.99

INDOOR AIRFLOW CORRECTION TABLE

% Rated Air	90	95	100	105	110
Total Cap. Mult.	.98	.99	1.00	1.01	1.03

INDOOR TEMPERATURE CORRECTION TABLE

(Based on 95°F Ambient)

Indoor D.B. °F (°C).	Correction Factor	Entering Indoor Wet Bulb °F (°C).						
		59 (15)	61 (16)	63 (17)	65 (18)	67 (19)	69 (20)	71 (21)
70 (21)	Total Cap. Mult.	.90	.93	.96	.99	1.02	-	-
	Sens Cap. Mult.	.86	.85	.82	.77	.70	-	-
75 (24)	Total Cap. Mult.	.89	.92	.95	.98	1.01	1.04	-
	Sens Cap. Mult.	1.04	1.03	1.00	.95	.88	.78	-
80 (26)	Total Cap. Mult.	.88	.91	.94	.97	1.00	1.03	1.06
	Sens Cap. Mult.	1.18	1.17	1.14	1.08	1.00	.89	.73
85 (29)	Total Cap. Mult.	-	.90	.93	.96	.99	1.02	1.05
	Sens Cap. Mult.	-	1.29	1.26	1.20	1.11	.98	.81

Bold Type = approximately 50% Relative Humidity