

Multi/Split System Submittal Data

Ceiling Recessed Indoor Unit - Multi Heat Pump

CS-MKE12NB4U

Grille: CZ-18BT1U

Job Name: _____
 Location: _____
 Engineer: _____
 Submitted to: _____
 Submitted by: _____
 Reference: _____

Approval: _____
 Date: _____
 Construction: _____
 Unit #: _____
 Drawing #: _____

General Data (at 230V)

Power	V/P/Hz	230/1/60
Circuit Ampacity	(A)	15
Fuse Size, Max.	(A)	20
Running Amps	(A)	.11
Power Input	(W)	35



Indoor Unit		Cool/Heat
Fan type		Turbo
Dia. & Length (in.) - No. Speeds		D12-5/8 L5-3/4 x 1
No. Speeds		3 & Auto
No. Poles	(RPM, High)	8 - 490
No. Motors	(W)	50-1
CFM	(HI)	247
Operation Sound	(HI/Med/Lo)	34/33/32

Performance Data @ ARI Standard Conditions (230V)

Cooling		
Total Capacity	(BTU/H)	11,900
Moisture Removal (HI)	(Pint/H)	4.26

Heating

Total Capacity	(BTU/H)	13,600
----------------	---------	--------

Coil Type	Aluminum Plate Fin & Copper Tube
Fin Type - Pipe Type	Slit Plate - Inner Rifled
Rows - F.P.I.	2 - 18.1
Face Area	(sq.ft.) 2.94
Tube Size	(in.) 9/32"
Drain Connection Size	(in.) 23/32"

Feature

Controls	Microprocessor
Remote Controller	LCD Wireless Type, Temp. Sensor Built In
Temperature Control	IC Thermostat
Timer	24 Hr. Program, 1 Hr. Off
Night Setback	Built-In
Air Louver	Automatic
Power Failure Automatic Restart	Built-In
Self-Diagnosis	Built-In
Quiet Operation	Built-In
Air Filter	Washable, Anti-Mold

Refrigerant		R410a
Line Size	(in. O.D. Discharge)	1/4"(Flare)
Line Size	(in. O.D. Suction)	3/8"(Flare)

Dimensions	(in.)	H x W x D
Indoor Unit	(Uncrated)	12-5/16 x 24-19/32 x 24-19/32
	(Crated)	11-13/32 x 24-13/16 x 28-1/8

Weight		Indoor
Net	(lbs.)	35.3
Shipping	(lbs.)	41.9

Shipping Volume	(cu.ft.)	Indoor
		4.59

Dimensions

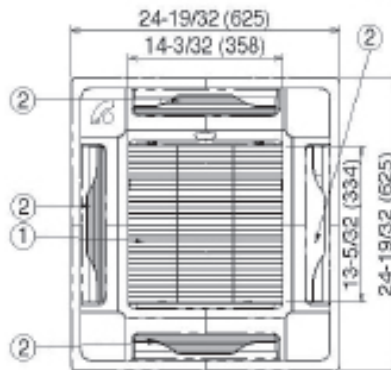
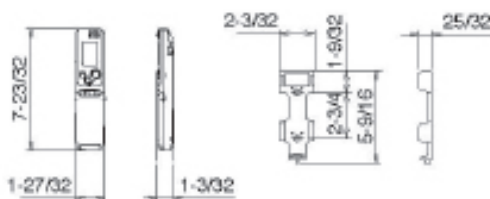
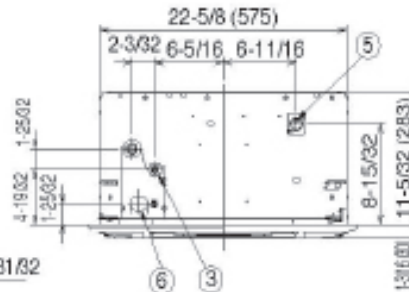
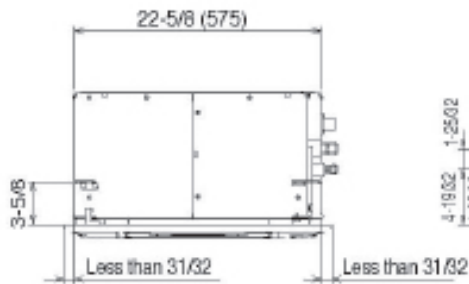
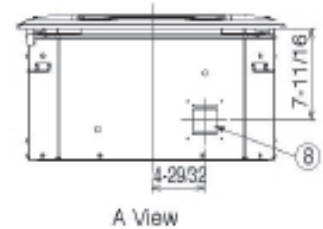
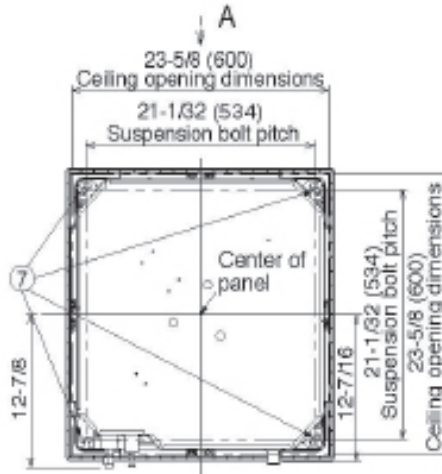
Option

Refrigerant Line Set	Available
Fresh Air Intake	Knock-out
Air duct Extension	N/A
Condensate Drain Pump	Standard
Hard Wired Remote Controller	Available
Non-Removeable Remo-con Bracket	Available

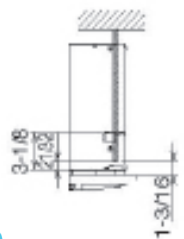
Operating Range

		Indoor Air Intake Temp.	Outdoor Air Intake Temp.
Cooling	Maximum	95F DB/71F WB	115F DB
	Minimum	67F DB/57F WB	67F DB

①	Air intake
②	Discharge outlet
③	Refrigerant tubing (liquid tube) dia. 1/4" (flared)
④	Refrigerant tubing (gas tube) dia. 1/2" (flared)
⑤	Drain tube connection port VP20 (outer dia. 1")
⑥	Power supply port
⑦	Suspension bolt hole (4 - 1/2" x 1-1/8" hole)
⑧	Fresh air intake duct connection port (dia. 3-7/8")



The length of the suspension bolts should be selected so that there is a gap of 1-3/16" or the ceiling (21/32" or more below the lower surface of the main unit), as shown in the figure at right. If the suspension bolts is too long, it will contact the ceiling panel and the unit cannot be installed.



Unit : inch (n)

