

Project Name: _____
 Location: _____
 Engineer: _____
 Submitted to: _____
 Submitted by: _____
 Reference: _____

Approval: _____
 Date: _____
 Construction: _____
 Unit #: _____
 Drawing #: _____

Performance

Indoor Unit Model No: FCQ42MVJU
 Outdoor Unit Model No: RZQ42MVJU
 Cooling Capacity (Btu/hr): 40500
 Sensible Capacity (Btu/hr): 30400
 Cooling Input Power (kW): 5.218
 Cooling EER (Btu/hr / kW): 8.08
 SEER: 13
 Heating Capacity (Btu/hr): 41500
 Heating Input Power (kW): 4.553
 Heating COP (Btu/hr / Btu/hr): 2.79
 HSPF: 7.7

Indoor Unit Type: 3' x 3' 4 Way Cassette
 Condensing Unit Type: SkyAir Heat Pump
 Cooling Nominal Conditions: Indoor: 80°F DB/67°F WB
 Outdoor: 95°F DB/75°F WB
 Water Cooled:
 Heating Nominal Conditions: Indoor: 47°F DB/43°F WB
 Outdoor: 47°F DB/43°F WB
 Water Cooled:
 Nominal Piping Length: 25
 Nominal Height Separation: 0
 Nominal Water Flow Rate: _____

Indoor Unit Details

Power Supply (V/Hz/Ph): 208-230/60/1ph
 Power Supply Connections: L1, L2, Ground
 Min. Circuit Amps MCA (A): 1.4
 Max. Fusible Amps MFA (A): 15
 Dimensions (HxWxD): 11-3/8x33-1/8x33-1/8
 Panel (HxWxD): 1-5/8x37-3/8x37-3/8
 Net Weight (lbs): 74
 Weight with Panel (lbs): 85

Airflow Rate (CFM wet coil): 1030//870
 Moisture Removal (pt/h): _____
 Gas Pipe Connection (inch): 5/8
 Liquid Pipe Connection (inch): 3/8
 Condensate Connection (inch): 1-1/4
 Sound Pressure Level (dBA): 46
 Sound Power Level (dBA): _____
 Nominal External Static Pressure (inH2O): 0
 Max Ext Static Pressure (inH2O): 0

Condensing Unit Details

Power Supply (V/Hz/Ph): 208-230/60/1ph
 Power Supply Connections: L1, L2, Ground
 Min. Circuit Amps MCA (A): 27
 Max. Fusible Amps MFA (A): 30
 Max. Starting Current MSC(A): 22.7
 Rated Load Amps RLA (A): 23.3
 Total Overcurrent Amps (A): 27
 Dimensions (HxWxD): 52-15/16x35-7/16x12-5/8
 Net Weight (lbs): 310
 Compressor Type: Inverter
 Capacity Control Range (%): _____
 Capacity Index Limit: _____

Airflow Rate (CFM): 3740
 Gas Pipe Connection (inch): 5/8
 Liquid Pipe Connection (inch): 3/8
 H/L Pressure Connection (inch): _____
 H/L Equalizing Connection (inch): _____
 Water Inlet Connection (inch FPT): _____
 Water Outlet Connection (inch FPT): _____
 Condensate Drain Outlet (inch FPS): _____
 Sound Pressure Level (dBA): 58
 Sound Power Level (dBA): _____
 Unit Heat Rejection (kW): _____
 Max. No. of Indoor Units: _____

System Details

Refrigerant Type: R-410A
 Holding Refrigerant Charge (lbs): 12.8
 Additional Charge (oz/ft): 0.036lbs/ft
 Pre-charge Piping (Length ft): -
 Max. Pipe Length (Total ft): 230 ft
 Max. Pipe Length (Vertical ft): 164 ft / 130 ft

Cooling Operation Range (°F): 23 - 115
 Cooling Range w/Baffle (°F): 0 - 115
 Heating Operation Range (°F): 0 - 77
 Heating Range w/Baffle (°F): 0 - 77
 Cooling Inlet Water Temp (°F): _____
 Heating Inlet Water Temp (°F): _____
 Water Flow Range (GPM): _____

Submittal Data Sheet

Project Name: _____
Location: _____
Engineer: _____
Submitted to: _____
Submitted by: _____
Reference: _____

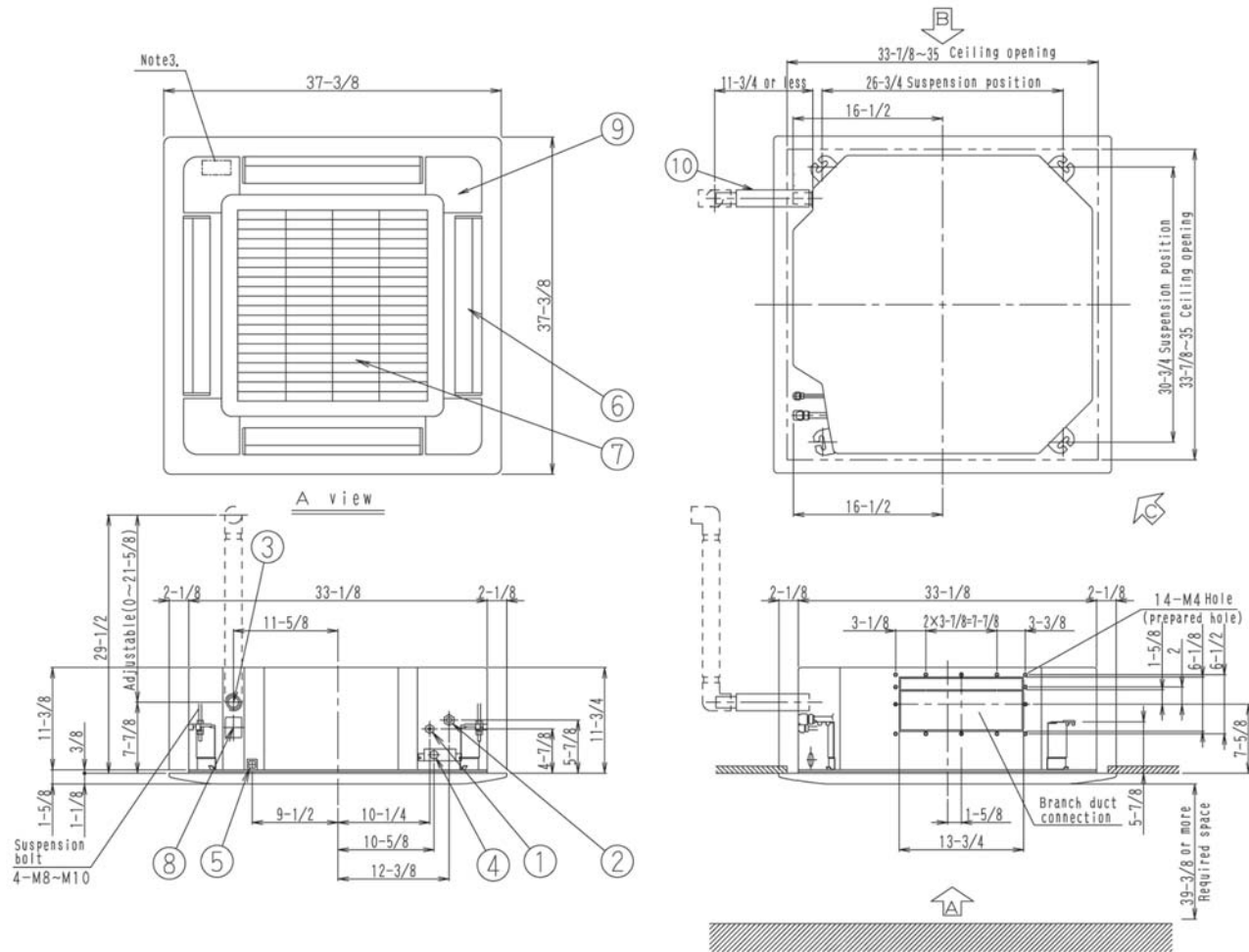
Approval: _____
Date: _____
Construction: _____
Unit #: _____
Drawing #: _____



Project Name: _____
 Location: _____
 Engineer: _____
 Submitted to: _____
 Submitted by: _____
 Reference: _____

Approval: _____
 Date: _____
 Construction: _____
 Unit #: _____
 Drawing #: _____

Dimensional Drawing - Indoor Unit



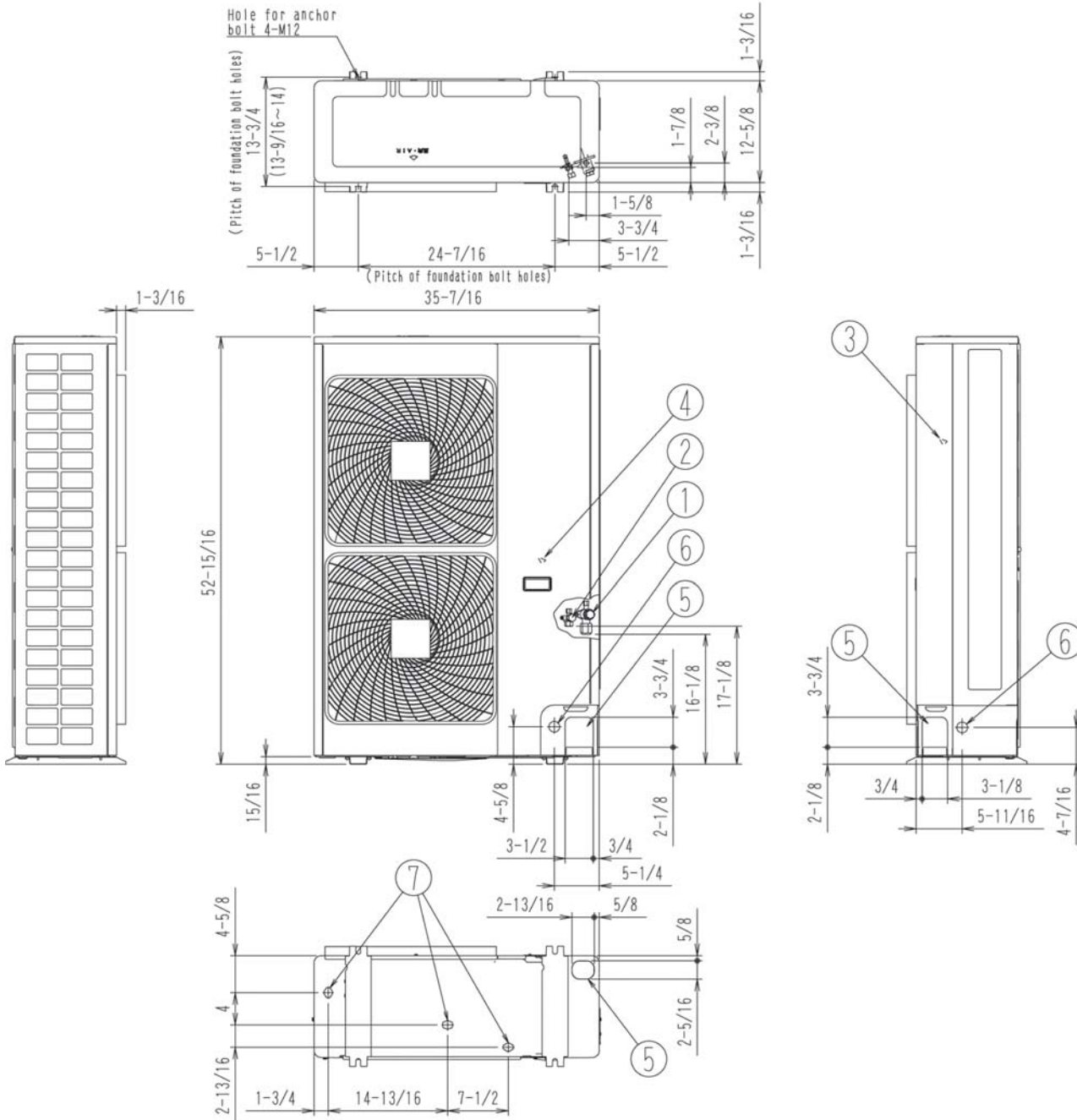
Notes:

- Location of unit's Name Plate
 For Main body: Switch Box Cover inside surface of suction grille.
 For decoration panel: Panel frame inside surface of suction grille.
- When installing an optional accessory, refer to the installation drawings.
 - For fresh air intake kit.....Inspection port is necessary.
 - For high efficiency filter unit.....Inspection port is not necessary.
- In case of using wireless remote controller, this position will be a signal receiver. Refer to the drawing of wireless remote controller in detail.

Project Name: _____
 Location: _____
 Engineer: _____
 Submitted to: _____
 Submitted by: _____
 Reference: _____

Approval: _____
 Date: _____
 Construction: _____
 Unit #: _____
 Drawing #: _____

Dimensional Drawing - Condensing Unit



Project Name: _____
Location: _____
Engineer: _____
Submitted to: _____
Submitted by: _____
Reference: _____

Approval: _____
Date: _____
Construction: _____
Unit #: _____
Drawing #: _____

Notes

Std U.S. Warranty: 6yrs Compressor, 1yrs Parts, 1yr Limited Labor