

SUBMITTAL DATA: PLA-A12BA4 & PUY-A12NHA4 (-BS)

12,000 BTU/H CEILING CASSETTE AIR-CONDITIONING SYSTEM

Job Name:	Location:	Date:
Purchaser:	Engineer:	
Submitted to:	For <input type="checkbox"/> Reference <input type="checkbox"/> Approval <input type="checkbox"/> Construction	
System Designation:	Schedule No.:	



Indoor Unit: PLA-A12BA4



Outdoor Unit: PUY-A12NHA4 (-BS)

GENERAL FEATURES

- Compact side-discharge outdoor unit
- Quiet operation—indoor and outdoor units
- Built-in drain lift mechanism for condensate removal; lifts to 33-7/16"
- Wide air flow pattern for better air distribution
- Auto wave airflow in heating mode—unit independently cycles through horizontal and vertical positions for more even heat distribution
- Independent vane adjustment
- Automatic fan speed control
- Limited warranty: five years parts and seven years compressors

UNIT OPTION

- Standard Model.....PUY-A12NHA4
- Sea Coast (BS) Model.....PUY-A12NHA4-BS

OPTIONAL ACCESSORIES

Indoor Unit

- i-see Sensor Corner Panel (PAC-SA1ME)
- Multi-function Casement (PAC-SH53TM)
- Air Outlet Shutter Plates (PAC-SH51SP)
- High-efficiency (MERV 10) Filter (PAC-SH59KF)

Outdoor Unit

- Drain Pan (PAC-SG63DP)
- Drain Socket (PAC-SG61DS)
- Three-pole Disconnect Switch (TAZ-MS303)
- Wind Baffle (WB-PA1)
- Air Outlet Guide (PAC-SG58SG)
- Mounting Base (DSD-400N)
- Mounting Pad (ULTRILITE1)
- Wall-mounting Brackets (CWMB1)

Controller Options

- Wireless Wall-mounted Remote Controller Kit (MHK1)*
 - Portable Controller (MCCH1)*
 - Outdoor Air Sensor (MOS1)*
- *See Submittal for information on each option.
- Wired Wall-mounted Controller (PAR-21MAAU)
 - M-NET Adapter (PAC-SF81MA)
 - CN51 Connector for Multiple Remote Controller Adapters/Duct Fan Controller (PAC-725AD)
 - CN32 Connector for Remote On/Off (PAC-715AD)
 - Remote Temperature Sensor (PAC-SE41TS)
 - Remote Operation Adapter - Display and On/Off (PAC-SF40RM)
 - Hand-held Wireless Remote Controller (PAR-FL32MA; req. PAR-SA9FA-E)
 - Wireless Signal Receiver Module (PAR-SA9FA-E)
 - Lockdown Bracket for Hand-held Controller (RCMKP1CB)
 - Control/Service Tool (PAC-SK52ST)

SEACOAST PROTECTION

- External Outer Panel: Phosphate coating + Acrylic-Enamel coating
- Fan Motor Support: Epoxy resin coating (at edge face)
- Separator Assembly ; Valve Bed: Epoxy resin coating (at edge face)
- Screws (used outer side): Zinc nickel coating 5µm + Polyvinylidene chloride coating

"Blue Fin" treatment is an anti-corrosion treatment that is applied to the condenser coil to protect it against airborne contaminants..



SPECIFICATIONS: PLA-A12BA4 & PUY-A12NHA4 (-BS)

Cooling*

Rated Capacity 12,000 Btu/h
 Minimum Capacity 6,000 Btu/h
 SEER 13.5 Btu/h/W
 EER 9.5 Btu/h/W
 Total Input 1,260 W

* Rating Conditions per AHRI Standard

Cooling | Indoor: 80° F (27° C) DB / 67° F (19° C) WB
 Cooling | Outdoor: 95° F (35° C) DB / 75° F (24° C) WB

Electrical Requirements

Power Supply 208 / 230V, 1-Phase, 60 Hz
 Recommended Fuse/Breaker Size 15 A

Voltage

Indoor - Outdoor S1-S2 AC 208 / 230V
 Indoor - Outdoor S2-S3 DC ±24V

OPERATING CONDITIONS

		Indoor Intake Air Temp.	Outdoor Intake Air Temp.
Cooling	Maximum	95° F (35° C) DB 71° F (22° C) WB	115° F (46° C) DB
	Minimum	67° F (19° C) DB 57° F (14° C) WB	0° F** (-18° C) DB

** With optional wind baffle accessory installed. If not installed, the minimum temperature will be 23°F (-5°C) DB.

Indoor Unit

MCA 1 A
 Fan Motor (ECM) 0.51 F.L.A.
 Fan Motor Output 50 W
 Airflow (Lo - M1 - M2 - Hi) 390 - 420 - 460 - 530 Dry CFM
 350 - 390 - 420 - 490 Wet CFM
 Sound Level (Lo - M1 - M2 - Hi) 27 - 28 - 29 - 31 dB(A)
 SHF 0.84
 Moisture Removal 1.7 pt./h

DIMENSIONS	UNIT INCHES / MM	PANEL INCHES / MM
W	33-1/16 / 840	37-3/8 / 950
D	33-1/16 / 840	37-3/8 / 950
H	10-3/16 / 258	1-3/8 / 35

Weight (Unit/Grille)

lbs. 49 / 13
 kg 22 / 6
 External Finish (Grille) Munsell No. 6.4Y 8.9 / 0.4
 Field Drainpipe Size O.D. 1-1/4" / 32 mm

Outdoor Unit

Compressor DC Inverter-driven Twin Rotary
 MCA 13 A
 MOCPC 15 A
 Fan Motor (ECM) 0.35 F.L.A.
 Sound Pressure Level (Cooling) 46 dB(A)

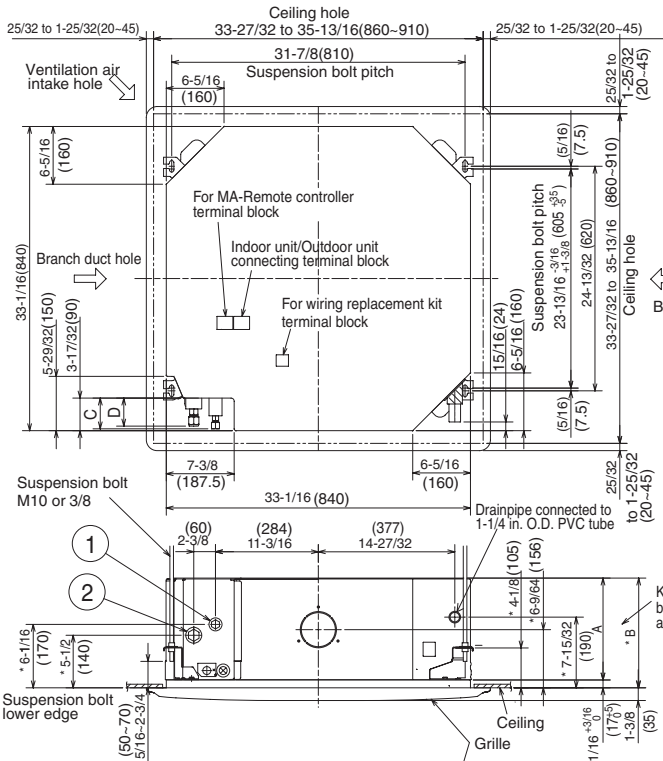
DIMENSIONS	INCHES / MM
W	31-1/2 / 800
D	11-13/16 + 7/8 / 300 + 23
H	23-5/8 / 600

Weight82 lbs. / 37 kg
 External Finish Munsell No. 3Y 7.8 / 1.1
 Refrigerant Type R410A
 Refrigerant Pipe Size O.D.
 Gas Side 1/2" / 12.7 mm
 Liquid Side 1/4" / 6.35 mm
 Max. Refrigerant Pipe Length 100' / 30 m
 Max. Refrigerant Pipe Height Difference 100' / 30 m
 Connection Method Flared

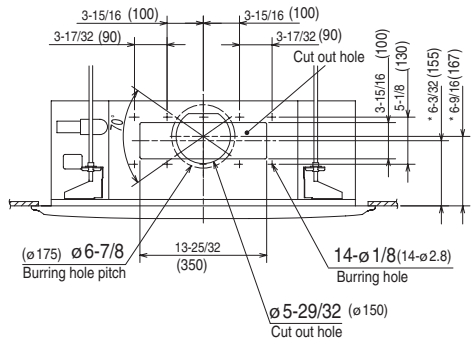
Notes:

DIMENSIONS: PLA-A12BA4

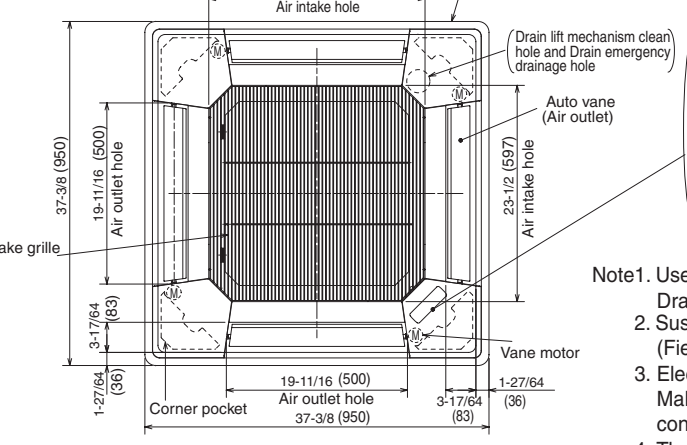
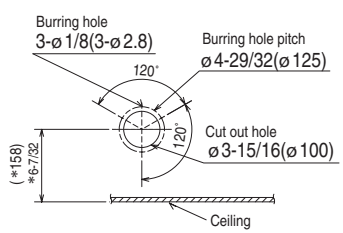
Unit : inch(mm)



Detail connecting of branch duct (nominal 6" round or nominal 4 x 14" rectangular)



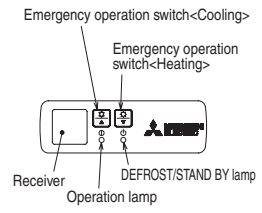
Detail drawing of ventilation air intake connection



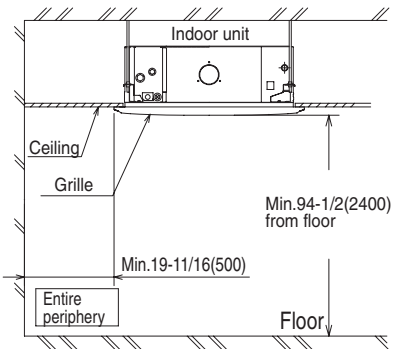
In case of standard grille



In case of wireless remote controller



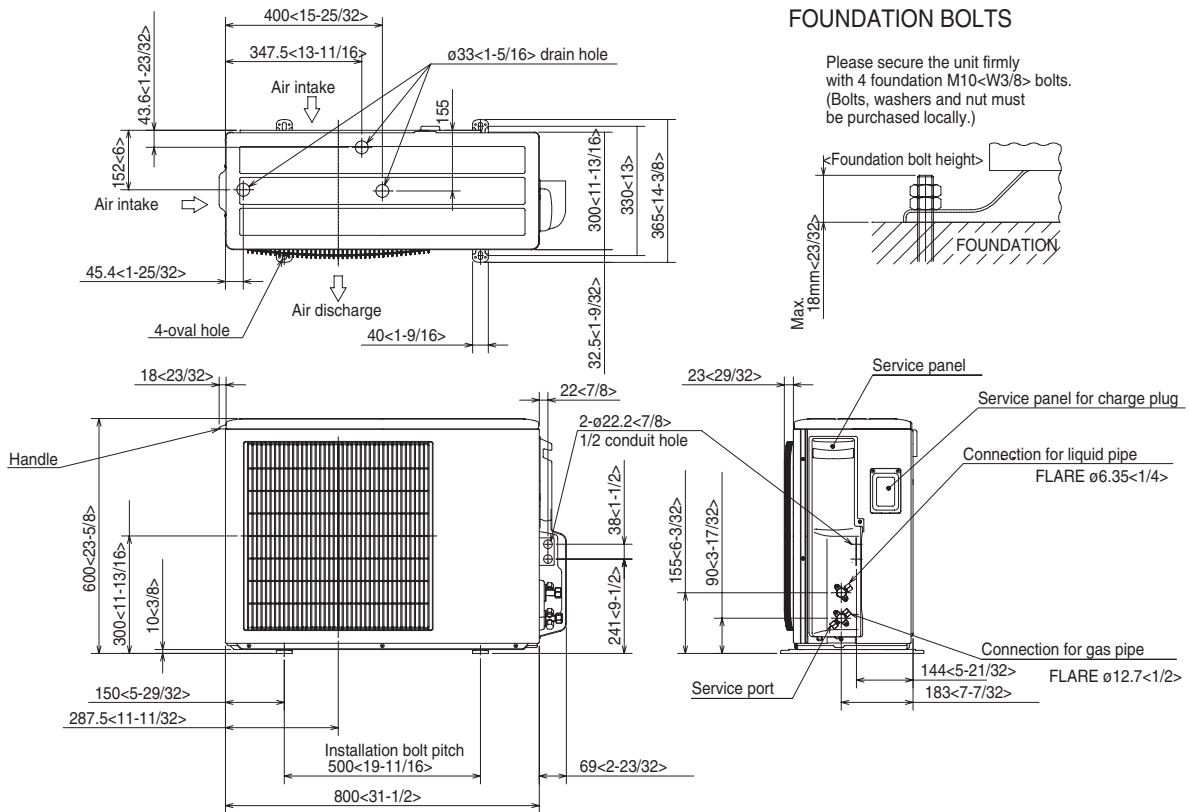
- Note1.** Use 1-1/4 in. O.D. (32) PVC TUBE.
 Drain lift mechanism is included.
2. Suspension bolt, use M10 or W3/8. (Field supplied)
 3. Electrical box may be removed for service purposes. Make sure to slack the electrical wire little bit for control/power wires connection.
 4. The height of the indoor unit is adjustable with the grille attached.
 5. For the installation of the optional high efficiency filter, the optional multi-functional casement is required.
 - 1) Add 5-5/16 (135mm) to the dimensions marked with an * in the figures
 - 2) The optional high efficiency filter required optional multi-functional casement.
 6. When installing the branch ducts, be sure to insulate adequately. Otherwise condensation may occur.
 7. As for necessary installation/service space, please refer to the bottom left figure.



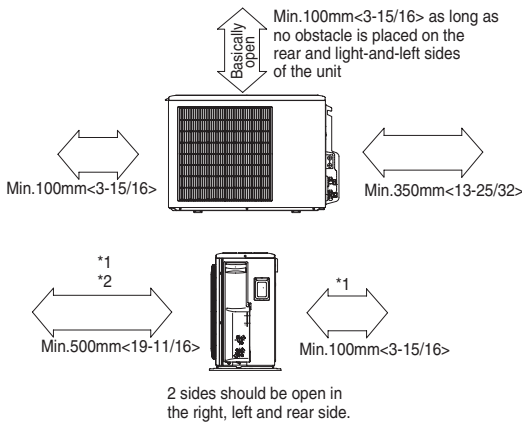
Models	①	②	A	B	C	D
PLA-A12BA PLA-A18BA	Refrigerant pipe ...ø6.35mm Flared connection ...1/4	Refrigerant pipe ...ø12.7mm Flared connection ...1/2	9-1/2 (241)	10-3/16 (258)	3-5/32 (80)	2-29/32 (74)
PLA-A24BA PLA-A30BA PLA-A36BA PLA-A42BA	Refrigerant pipe ...ø9.52mm Flared connection ...3/8	Refrigerant pipe ...ø15.88mm Flared connection ...5/8	11-1/16 (281)	11-3/4 (298)	3-11/32 (85)	3-1/32 (77)

DIMENSIONS: PUY-A12NHA4 (-BS)

Unit : mm<inch>



Clearance space needed around the outdoor unit



PIPING-WIRING DIRECTION

Piping and wiring connection can only be made from the back.

Minimum installation space for outdoor unit

If the unit is installed in a place where short cycle can occur, cooling and heating capacity might be reduced by 10%. Using an air outlet guide (PAC-SG58SG-E) will help deflect exhaust air and improve performance.



Intertek



3400 Lawrenceville Suwanee Rd
Suwanee, GA 30024
Tele: 678-376-2900 • Fax: 800-889-9904
Toll Free: 800-433-4822
www.mehvac.com