

Job Name: \_\_\_\_\_

System Reference: \_\_\_\_\_ Date: \_\_\_\_\_



Indoor Unit: PLA-A36BA6



Outdoor Unit: PUZ-A36NHA6 (-BS)

### UNIT OPTION:

- Standard Model.....PUZ-A36NHA6
- Seacoast (BS) Model.....PUZ-A36NHA6-BS

### ACCESSORIES:

#### Indoor Unit

- Condensate Pump (BlueDiamond X87-711/721; 115/230V)
- Condensate Pump (Sauermann SI30-115/230; 115/230V)
- iSee Corner Panel (PAC-SA1ME-E)
- Multifunction Casement / MERV 10 Filter (PAC-SH53TM-E / PAC-SH59KF)
- Air Outlet Plates (PAC-SH51SP-E)

#### Outdoor Unit

- Wind Baffle (WB-PA2)\*  
\*Allows operation to 0° F (-18° C).
- Air Outlet Guide (PAC-SG59SG-E)
- Mounting Base (QSMS1201)
- Wall Bracket (QSWB2000M-1)

#### Controls

- Wireless Controller (MHK1)
- Advanced Wired Controller (PAR-31MAA)
- Simple Wired Controller (PAC-YT53CRAU)
- M-NET Adapter (PAC-SF83MA-E)
- Temperature Sensor (PAC-SE41TS)

### SPECIFICATIONS:

#### Rated Conditions (Capacity / Input)\*

Cooling	Btu/h / W	35,000 / 4,500
Heating at 47° F	Btu/h / W	37,000 / 3,300
Heating at 17° F	Btu/h / W	25,000 / 3,070

\* Rating Conditions per AHRI Standard:  
 Cooling | Indoor: 80° F (27° C)DB / 67° F (19° C)WB; Outdoor: 95° F (35° C)DB / 75° F (24° C)WB  
 Heating at 47° F | Indoor: 70° F (21° C)DB / 60° F (16° C)WB; Outdoor: 47° F (8° C)DB / 43° F (6° C)WB  
 Heating at 17° F | Indoor: 70° F (21° C)DB / 60° F (16° C)WB; Outdoor: 17° F (-8° C)DB / 15° F (-9° C)WB

#### Capacity Range

Cooling	Btu/h	12,000 - 35,000
Heating at 47° F	Btu/h	12,000 - 38,000

#### Operating Range

Cooling	0° F** to 115° F (-18° C to 46° C) DB
Heating	12° F to 70° F (-11° C to 21° C) DB

\*\* The minimum temperature will be 23° F (-5° C) DB if optional wind baffle accessory is not installed.

#### AHRI Efficiency Ratings

EER	7.8
SEER	14.2
HSPF	9.3
COP at 47° F	3.28
COP at 17° F	2.37

Electrical Power Requirements	208 / 230V, 1-Phase, 60 Hz
-------------------------------	----------------------------

#### Minimum Circuit Ampacity (MCA)

Indoor / Outdoor	A	2 / 25
------------------	---	--------

#### Indoor Unit

Fan Motor (ECM)	F.L.A.	1.00
Fan Motor Output	W	120
SHF / Moisture Removal		0.74 / 8.1 pt./h
Drain Lift Mechanism (Included)	H: In.	33-7/16

#### Outdoor Unit

Compressor		DC INVERTER-driven Twin Rotary
Fan Motor (ECM)	F.L.A.	0.75
MOCP	A	40

#### Airflow Rate (Low-M1-M2-Hi)

Indoor (Cooling)	DRY	CFM	710-810-920-1,060
	WET		670-770-880-1,030
Outdoor	DRY		1,940

#### Sound Pressure Level

Indoor (Low-M1-M2-Hi)		dB(A)	32-34-37-40
Outdoor	Cooling	dB(A)	48
	Heating		50

#### External Dimensions

Indoor (H x W x D)	In.(mm)	11-3/4 x 33-1/16 x 33-1/16 (298 x 840 x 840)
Outdoor (H x W x D)		37-1/8 x 37-3/8 x 13 + 1-3/16 (943 x 950 x 330 + 30)

#### Net Weight

Indoor (Unit / Grille)	Lbs.(kg)	55 / 13 (25 / 6)
Outdoor		165 (75)

#### External Finish

Indoor	Munsell No. 6.4Y 8.9/0.4
Outdoor	Munsell No. 3Y 7.8 / 1.1

Refrigerant	R410A ; 6lbs., 10oz.
-------------	----------------------

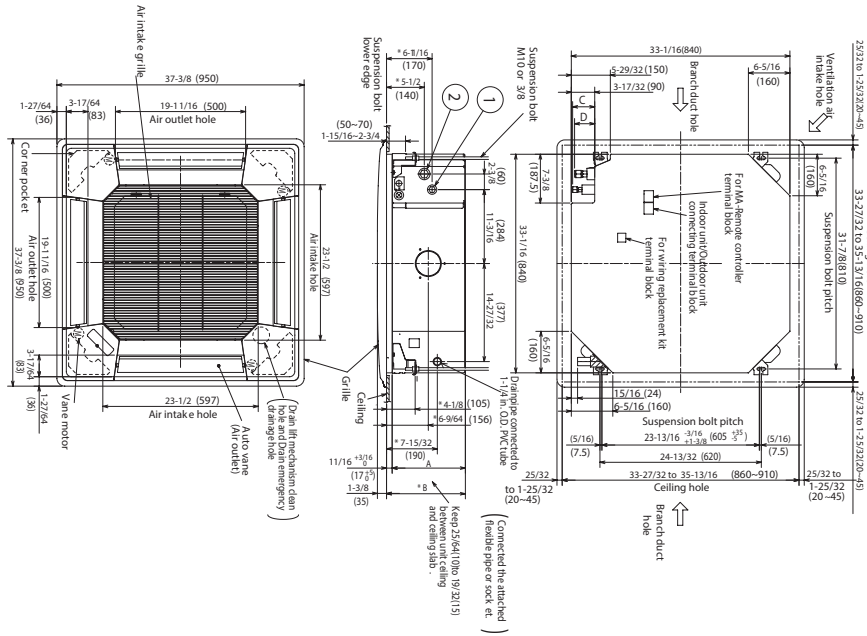
#### Refrigerant Piping (Flared)

Liquid (High Pressure)	In.(mm)	3/8 (9.52)
Gas (Low Pressure)		5/8 (15.88)
Maximum Total Refrigerant Pipe Length	Ft. (m)	165 (50)
Maximum Vertical Separation	Ft. (m)	100 (30)

# DIMENSIONS: PLA-A36BA6 & PUZ-A36NHA6 (-BS)

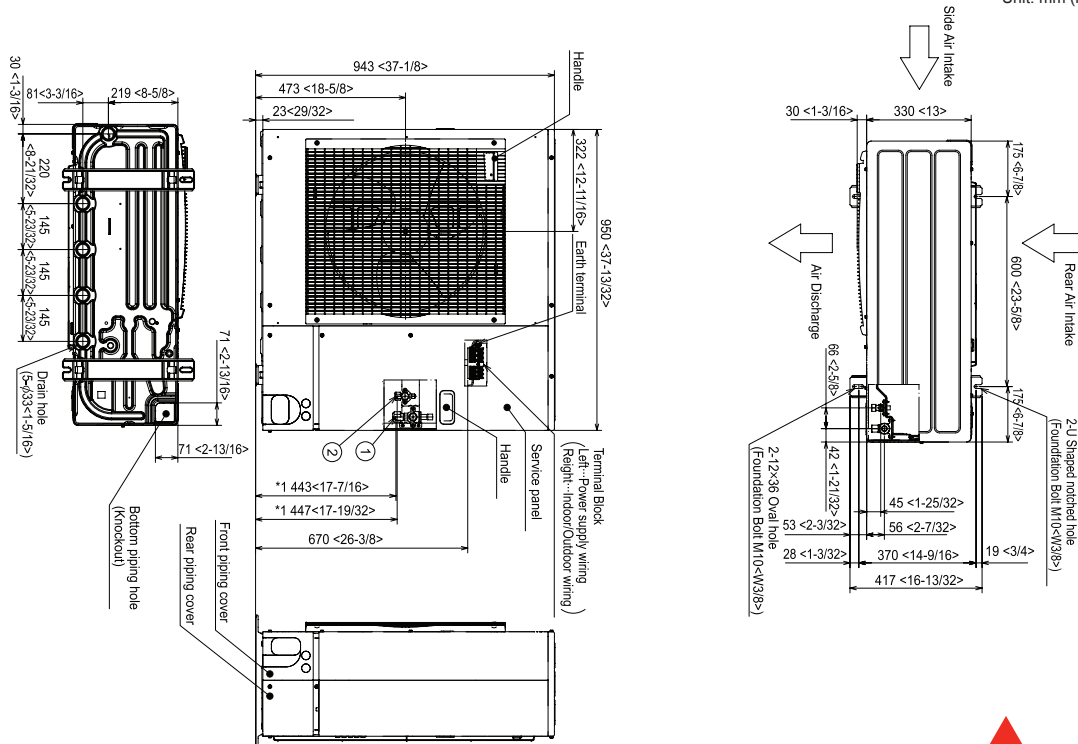
## PLA-A36BA6

Unit : inch(mm)



## PUZ-A36NHA6 (-BS)

Unit: mm (inch)



**NOTES:**  
SEACOAST PROTECTION

- External Outer Panel: Phosphate coating + Acrylic-Enamel coating
- Fan Motor Support: Epoxy resin coating (at edge face)
- Separator Assembly ; Valve Bed: Epoxy resin coating (at edge face)
- Screws (used outer side): Zinc nickel coating 5µm + Polyvinylidene chloride coating

**“Blue Fin” treatment is an anti-corrosion treatment that is applied to the condenser coil to protect it against airborne contaminants..**



COOLING & HEATING

1340 Satellite Boulevard, Suwanee, GA 30024  
Toll Free: 800-433-4822 www.mehvac.com

