

Job Name:

System Reference:

Date:

Indoor Unit:
PLA-A42EA7



Outdoor Unit:
 PUY-A42NKA7
 PUY-A42NKA7-BS



INDOOR UNIT FEATURES

- Space-efficient ductless installation
- Equipped with 3D i-see Sensor™ for enhanced comfort and energy efficiency
- Airflow settings for high and low ceiling applications
- Individual vane settings for direct/indirect airflow control or variable airflow patterns
- Knockouts for outside-air intake and branch-duct run
- Filter indicator signal
- Easy-to-clean, washable filter (optional high-efficiency filter available - requires multi-function casement)
- Built-in condensate lift mechanism
- Ideal for retail shops, classrooms, office spaces, conference centers, building lobbies, and more

OUTDOOR UNIT FEATURES

- Variable speed INVERTER-driven compressor
- Suction accumulator pre-charged with refrigerant volume for piping length up to 100 ft (70 ft. for A12/18/24/30)
- Low ambient cooling down to -20°F providing 100% capacity (only for PUY models with wind baffles installed)
- 24-hour continuous operation (cooling mode)
- High pressure protection
- Fast restart due to bypass valve make it ideal for equipment cooling applications, such as data centers
- Superior energy and operational efficiency

SPECIFICATIONS: PLA-A42EA7 & PUY-A42NKA7(-BS)

Model Number	Indoor Unit		PLA-A42EA7
	Outdoor Unit		PUY-A42NKA7
			PUY-A42NKA7-BS
Cooling*1	Maximum Capacity	Btu/h	42,000
	Rated Capacity	Btu/h	42,000
	Minimum Capacity	Btu/h	16,000
	Maximum Power Input	W	3,590
	Rated Power Input	W	3,590
	Moisture Removal	Pints/h	7.9
	Sensible Heat Factor		0.79
	Power Factor	%	94.6
Efficiency	SEER		21.0
	EER *1		11.6
Electrical	Voltage, Phase, Frequency		208 / 230V, 1-phase, 60 Hz
	Guaranteed Voltage Range	V AC	187 - 253
	Voltage: Indoor - Outdoor, S1-S2	V AC	208V / 230
	Voltage: Indoor - Outdoor, S2-S3	V DC	24
	Voltage: Indoor - Remote controller	V DC	12
	Recommended Fuse/Breaker Size	A	30
	Recommended Wire Size (Indoor - Outdoor)	AWG	14
Indoor Unit	MCA	A	2.00
	Fan Motor Full Load Amperage	A	0.95
	Fan Motor Output	W	120
	Airflow Rate, Dry	CFM	740-920-1060-1200
	Airflow Rate, Wet	CFM	700-880-1020-1160
	External Static Pressure	in.WG	n/a
	Sound Pressure Level	dB(A)	34-38-42-45
	Drain Pipe Size	In. (mm)	1-1/4 (32)
	Condensate Lift Mechanism, Max. Distance	In.	33-7/16
	Heat Exchanger Type		Plate fin coil
	External Finish Color		White Munsell 6.4Y 8.9/0.4
	Unit Dimensions // Grille Dimensions	W: In. (mm)	33-1/16 (840) // 37-13/32 (950)
D: In. (mm)		33-1/16 (840) // 37-13/32 (950)	

SPECIFICATIONS: PLA-A42EA7 & PUY-A42NKA7(-BS)

Model Number	Indoor Unit		PLA-A42EA7
	Outdoor Unit		PUY-A42NKA7
			PUY-A42NKA7-BS
	Package Dimensions // Grille Dimensions	H: In. (mm)	11-3/4 (298) // 1-9/16 (40)
		W: In. (mm)	35-9/16 // 39-6/16
		D: In. (mm)	34-5/16 // 38-3/16
		H: In. (mm)	16-9/16 // 4-12/16
	Unit Weight // Grille Weight	Lbs. (kg)	56 (25) // 11 (5)
	Package Weight	Lbs. (kg)	77 (35)
Indoor Unit Operating Temperature Range	Cooling Intake Air Temp (Maximum / Minimum)	°F	90 DB, 73 WB / 66 DB, 59 WB
Outdoor Unit	MCA	A	25
	MOCP	A	31
	Fan Motor Full Load Amperage	A	0.5 + 0.5
	Fan Motor Output	W	74
	Airflow Rate	CFM	3,880
	Refrigerant Control	Electronic Expansion Valve	
	Heat Exchanger Type	Cross fin	
	Sound Pressure Level, Cooling*1	dB(A)	52
	Sound Pressure Level, Heating*2	dB(A)	53
	Compressor Type	INVERTER-driven twin rotary	
	Compressor Model	MNB33FBRMC-L	
	Compressor Rated Load Amps	A	8
	Compressor Locked Rotor Amps	A	13
	Compressor Oil Type // Charge	oz.	FV50S // 45
	External Finish Color	Ivory Munsell 3Y 7.8/1.1	
	Base Pan Heater	n/a	
	Unit Dimensions	W: In. (mm)	41-5/16 (1050)
		D: In. (mm)	13+1-3/16 (330 + 30)
H: In. (mm)		52-11/16 (1338)	
Package Dimensions	W: In. (mm)	42-15/16	
	D: In. (mm)	17-11/16	

SPECIFICATIONS: PLA-A42EA7 & PUY-A42NKA7(-BS)

Model Number	Indoor Unit		PLA-A42EA7
	Outdoor Unit		PUY-A42NKA7
			PUY-A42NKA7-BS
		H: In. (mm)	56-4/16
	Unit Weight	Lbs. (kg)	211 (96)
	Package Weight	Lbs. (kg)	243 (110)
Outdoor Unit Operating Temperature Range	Cooling Intake Air Temp (Maximum / Minimum)	°F	115 DB / -20* DB
Refrigerant	Type		R410A
	Charge	Lbs, oz	10 lbs, 6 oz
Piping	Gas Pipe Size O.D. (Flared)	In.(mm)	5/8 (15.88)
	Liquid Pipe Size O.D. (Flared)	In.(mm)	3/8 (9.52)
	Maximum Piping Length	Ft. (m)	225 (69)
	Maximum Height Difference	Ft. (m)	100 (30)
	Maximum Number of Bends		15

AHRI Rated Conditions (Rated data is determined at a fixed compressor speed)	*1 Cooling (Indoor // Outdoor)	°F	80°F DB, 67°F WB // 95°F DB, 75°F WB
--	--------------------------------	----	--------------------------------------

Notes

*Wind baffles required to operate below 23°F DB in cooling mode. PUY with wind baffle: -20°F - 115°F. Refer to wind baffle documentation for further information.

**System cuts out in heating mode to avoid thermistor error and automatically restarts at these temperatures

SEACOAST PROTECTION

- External Outer Panel: Phosphate coating + Acrylic-Enamel coating
- Fan Motor Support: Epoxy resin coating (at edge face)
- Separator Assembly; Valve Bed: Epoxy resin coating (at edge face)
- “Blue Fin” treatment is an anti-corrosion treatment that is applied to the condenser coil to protect it against airborne contaminants.

Notes:

ACCESSORIES: PLA-A42EA7

High Efficiency (MERV 10) Filter Element (req. PAC-SJ41TM-E Multi-Function Casement)	<input type="checkbox"/> PAC-SH59KF-E
Grille with 3D i-see Sensor™	<input type="checkbox"/> PLP-40EAEU
Installation/Trim Panels	<input type="checkbox"/> PLFY-ITP1
Air Outlet Shutter Plate	<input type="checkbox"/> PAC-SJ37SP-E
Multi-functional Casement	<input type="checkbox"/> PAC-SJ41TM-E
Flange for Fresh-air Intake	<input type="checkbox"/> PAC-SH65OF-E
3-Pole Disconnect Switch (30A/600V/UL) [fits 2" X 4" utility box]	<input type="checkbox"/> TAZ-MS303
Drain Pan Level Sensor (Control for indoor unit shut off to prevent drain pan overflow)	<input type="checkbox"/> DPLS2
MaxiBlue Advanced Blue Diamond Mini-Condensation pump w/ Reservoir & Sensor (110V) up to 48,000 Btu/h [recommended]	<input type="checkbox"/> X87-711 - 110
MaxiBlue Advanced Blue Diamond Mini-Condensation pump w/ Reservoir & Sensor (208/230V) up to 48,000 Btu/h [recommended]	<input type="checkbox"/> X87-721 - 208/230
Extension Cord for Blue Diamond Pump	<input type="checkbox"/> C13-103
MegaBlue Blue Diamond Condensate Pump (110-230V) up to 170,000 Btu/h	<input type="checkbox"/> X87-835
Remote Sensor (extensible)	<input type="checkbox"/> PAC-SE41TS-E
Connector for CN32 (remote on/off)	<input type="checkbox"/> PAC-SE55RA-E
Remote Operation Adapter (w/ wire terminals for remote ON/OFF & operation status/error)	<input type="checkbox"/> PAC-SF40RM-E* ¹
External Fan / Heater Control Relay Adapter	<input type="checkbox"/> CN24RELAY-KIT-CM3
Backlit, Wall-mounted, Wireless	<input type="checkbox"/> MHK1
Wireless Remote Controllers	<input type="checkbox"/> MRCH1
Wireless Receiver	<input type="checkbox"/> MFH1
Portable Central Controller	<input type="checkbox"/> MCCH1
Outside Air Sensor	<input type="checkbox"/> MOS1
Wireless Adapter	<input type="checkbox"/> PAC-USWHS002-WF-1
BACnet® and Modbus Interface	<input type="checkbox"/> PAC-UKPRC001-CN-1
Wall-mounted, Wired	<input type="checkbox"/> PAC-YT53CRAU-J
Wired Remote Controller	<input type="checkbox"/> PAR-33MAA-J
T-STAT Interface	<input type="checkbox"/> PAC-US444CN-1
Signal Receiver	<input type="checkbox"/> PAR-SR3LA-E
Simple Remote Controller	<input type="checkbox"/> PAC-YT53CRAU
Wireless Remote Controller	<input type="checkbox"/> PAR-FL32MA-E
Wire for Remote ON/OFF with CN32 Connector	<input type="checkbox"/> PAC-715AD
Lockdown Bracket for Wireless, Hand-held, Remote Controllers	<input type="checkbox"/> RCMKP1CB

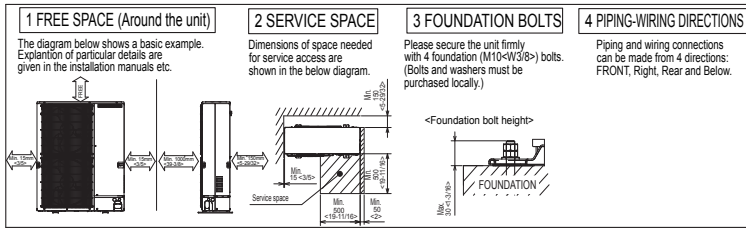
*¹ Unable to use with wireless remote controller

ACCESSORIES: PUY-A42NKA7(-BS)

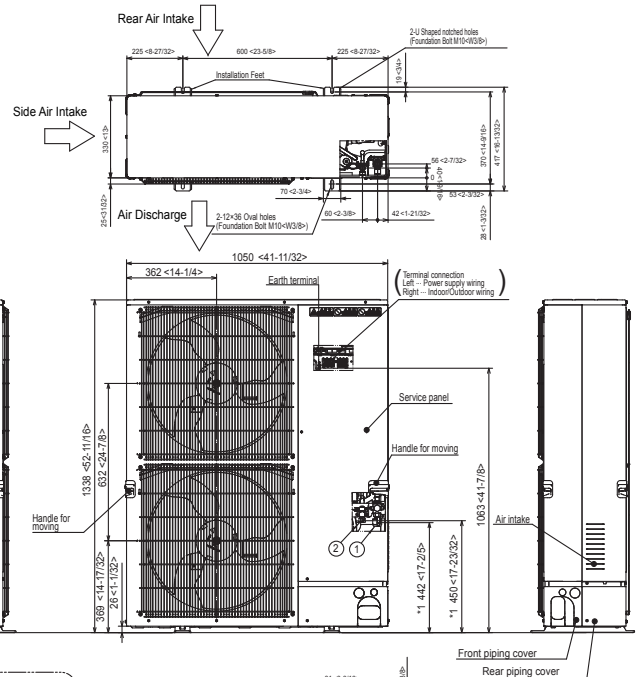
Air Outlet Guide	<input type="checkbox"/> PAC-SH96SG-E (two pieces are required)
Front Wind Baffle	<input type="checkbox"/> WB-PA3 (two pieces are required)
Side Advanced Wind Baffle	<input type="checkbox"/> WB-SD6
Rear Advanced Wind Baffle	<input type="checkbox"/> WB-RE6
Hail Guard	<input type="checkbox"/> HG-A2
Drain Socket	<input type="checkbox"/> PAC-SG61DS-E
Centralized Drain Pan	<input type="checkbox"/> PAC-SH97DP-E
Control/Service Tool	<input type="checkbox"/> PAC-SK52ST
Wall Mounting Bracket (Powder-coated Steel)	<input type="checkbox"/> QCWB2000M-1
Wall Mounting Bracket (316 Series Stainless Steel)	<input type="checkbox"/> QSWBSS
M-NET Control Adapter for Building Management System	<input type="checkbox"/> PAC-SF83MA-E
Outdoor Unit Mounting Pad 24" x 42" x 3"	<input type="checkbox"/> ULTRILITE2
Outdoor Unit 3-1/4 inch Mounting Base - Pair (Plastic)	<input type="checkbox"/> DSD-400N
MiniSplit Mounting Stand-Dual Fan Models - 12"	<input type="checkbox"/> QSMS1202M
MiniSplit Mounting Stand-Dual Fan Models - 18"	<input type="checkbox"/> QSMS1802M
MiniSplit Mounting Stand-Dual Fan Models - 24"	<input type="checkbox"/> QSMS2402M
3/8 x 5/8 x 10' / 1/2" Lineset (Twin-Tube Insulation)	<input type="checkbox"/> MPLS385812T-10
3/8 x 5/8 x 15' / 1/2" Lineset (Twin-Tube Insulation)	<input type="checkbox"/> MPLS385812T-15
3/8 x 5/8 x 30' / 1/2" Lineset (Twin-Tube Insulation)	<input type="checkbox"/> MPLS385812T-30
3/8 x 5/8 x 50' / 1/2" Lineset (Twin-Tube Insulation)	<input type="checkbox"/> MPLS385812T-50
3/8 x 5/8 x 65' / 1/2" Lineset (Twin-Tube Insulation)	<input type="checkbox"/> MPLS385812T-65
3/8 x 5/8 x 100' / 1/2" Lineset (Twin-Tube Insulation)	<input type="checkbox"/> MPLS385812T-100

DIMENSIONS: PLA-A42EA7 & PUY-A42NKA7 (-BS)

PUY-A42NKA7(-BS)

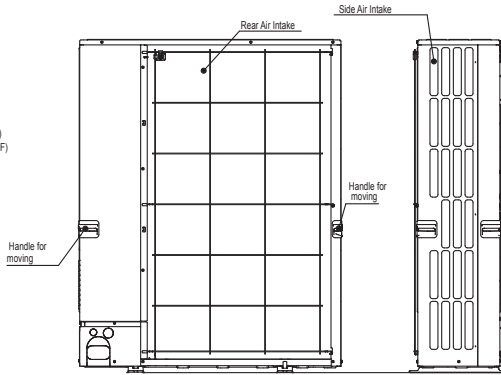


Unit: mm<in>

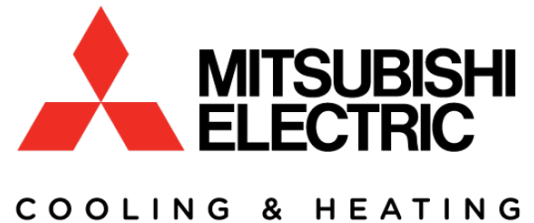
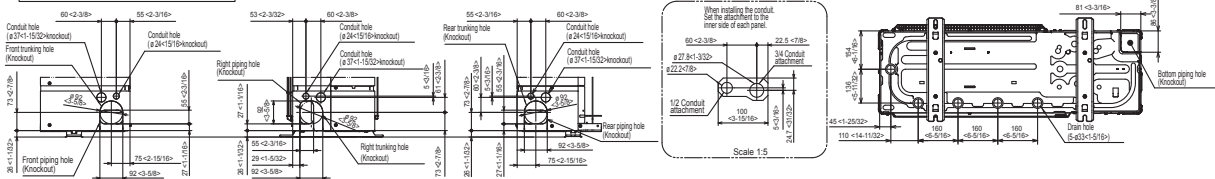


Example of Notes

- ① - Refrigerant GAS pipe connection (FLARE) ø15.88(5/8F)
- ② - Refrigerant LIQUID pipe connection (FLARE) ø9.52(3/8F)
- *1 - Indication of STOP VALVE connection location.



Piping Knockout Hole Details



1340 Satellite Boulevard, Suwanee, GA 30024
 Toll Free: 800-433-4822 www.mehvac.com

FORM# PLA-A42EA7 / PUY-A42NKA7(-BS) - 201706



Specifications are subject to change without notice.

Copyright © 2017 Mitsubishi Electric US, Inc.