

# PHOENIX MANUFACTURING, INC.

## SPECIFICATION DATA



Trophy Series Down



Trophy Series Side

### RESIDENTIAL AEROCOOL® TROPHY models:

- TH/TD4801 (UL Classified)**
- UTH/UTD4801 (UL LISTED)**
- TH/TD4812 (UL Classified)**
- UTH/UTD4812 (UL LISTED)**
- TH/TD/TUP 6801(UL Classified)**
- UTH/UTD/UTUP 6801(UL LISTED)**
- TH/TD/TUP 6812 (UL Classified)**
- UTH/UTD/UTUP 6812 (UL LISTED)**

- High quality architectural grade Peblar XT® finish
- Pro-Armor- The premier single inlet cooler with polymeric inner structure that completely shields the wet section from corrosive interaction.
- Galvanized sheet steel is zinc coated at weights rated G40 or G90
- Evaporative media used in the UL Listed models is rated to UL900, Class 2
- These units are available with both 8" or 12" High Efficiency Rigid Media pads. An "01" suffix notates and 8"-media pad and a "12" suffix notates a 12"-media pad. Evaporative media is corrugated cellulose material, impregnated with insoluble antirot salts and rigidifying saturates.
- Bearings have an L10 bearing life of 39,000 hours
- Electrical service knockouts are 1/2"
- Water supply line is 1/4" O.D. on both sides.
- Bottom pan drain is 3/4" male hose thread.
- UL Classified Evaporative Air Cooler, in accordance with the Uniform Mechanical Code. UL Listed models are also available. To order a UL Listed model, add a "U" prefix to the part number. NOTE: in order to maintain the UL Classified or UL Listed designation, these models must be installed with PMI motor kits and pumps
- All models ship with 120v pumps included Low Sump Pump. 240vt pumps are available.
- Optional Pro-Shield weatherizing panel inhibits heat loss and cold air from entering your home during the off season.

### PERFORMANCE

**BEARING LIFE** - L10 bearing life of 39,600 hours is based on ABMA standard 9/ISO standard 281.

**BLOWER WHEEL** - balanced in accordance with ISO 1940 and A.N.S.I. standard S2.19, quality grade G6.3.

**SINGLE PHASE MOTORS** - tested under UL standard 507 for locked rotor and heat rise protection.

**HOT DIPPED GALVANIZED SHEET STEEL** - is ASTM A653, Type CS, with zinc coating weights rated G40 or G90.

### CONSTRUCTION

**EVAPORATIVE MEDIA** - specially corrugated cellulose material, impregnated with insoluble antirot salts and rigidifying saturates. Media used in UL Listed coolers is rated to UL900, Class 2.

**SEALANT** - water immersion per ASTM D870.

**CORROSION RESISTANCE** - per ASTM B117.

**PENCIL HARDNESS** - per ASTM D3363.

**IMPACT RESISTANCE** - per D2794.

**FLEXIBILITY**- per ASTM D522.

**SURFACE BURNING CHARACTERISTICS** - of building materials (best rating) per UL 723 and ASTM E-84.

**PEBLAR XT®** - is our one coat TGIC Polyester Powder Coating system that is applied over 5 stage zinc phosphate prepared sheet steel surfaces for protection against atmospheric corrosion. This coating system meets the requirements of UL 1332 - Organic Coatings for Steel Enclosures of Outdoor Use Electrical Equipment.

**AEROCOOL®** Evaporative Coolers and components are designed and tested in accordance with one or more of the following standards or agencies:  
 Note: In order to maintain the UL Classified or UL Listed designation, these models must be installed with PMI supplied motor kits and pumps.



#### UL Classified Models

The Aerocool Trophy models are Classified by UL as Evaporative Air Coolers in accordance with the Uniform mechanical Code.



#### UL Listed Models

Listed to applicable UL Standards and requirements by UL.

All data, specifications and detail contained in this publication are intended as a general guide for using PHOENIX MANUFACTURING, INC. PRODUCTS. These products should not be used in design or construction without an independent evaluation by a qualified engineer or architect to verify the suitability of a particular product for use in a specific application. PHOENIX MANUFACTURING, INC. assumes no liability for failure resulting from the use or misapplication of computation, detail drawings and specifications contained herein. This publication contains the latest information available at the time of printing. PHOENIX MANUFACTURING, INC. reserves the right to make modifications and/or change materials of any of their products without prior notice or obligation. PHOENIX MANUFACTURING, INC. may not produce all of the products contained in this submittal. For product availability and the latest information regarding products contact PHOENIX MANUFACTURING, INC.

# SUBMITTAL DATA

## RESIDENTIAL AEROCOOL® Trophy MODELS:

**TH/TD4801 (UL Classified)**

**UTH/UTD4801 (UL LISTED)**

**TH/TD4812 (UL Classified)**

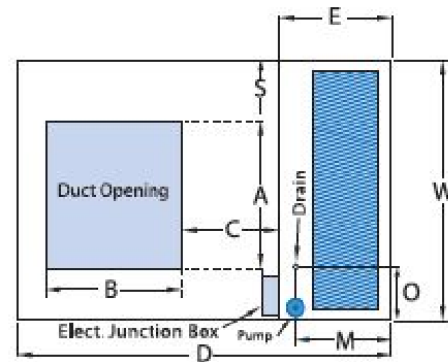
**UTH/UTD4812 (UL LISTED)**

**TH/TD/TUP 6801 (UL Classified) UTH/UTD/UTUP 6801 (UL LISTED)**

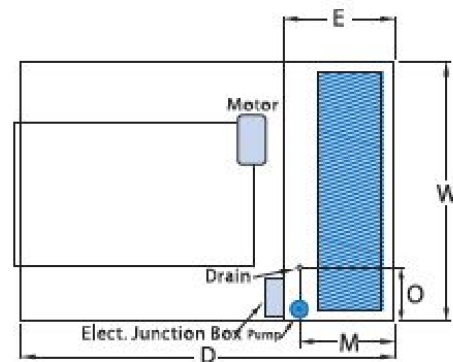
**TH/TD/TUP 6812 (UL Classified) UTH/UTD/UTUP 6812 (UL LISTED)**

### CFM Specifications (Motors Ship Separately)

Model #	Indus. Std. Rating	CFM at Static Pressure						Electrical Specifications			
		0.0"	0.1"	0.2"	0.3"	0.4"	0.5"	HP	Speed	Volts	Amps
TD/TH4801	4400	3329	3035	2816	2623	2429	2235	1/2	2	120/240	9.0/5.3
TD/TH4812	4400	2860	2790	2645	2350	2030	1890	1/2	2	120/240	9.9/5.9
TD/TH4801	4800	3875	3619	3440	3286	3132	2978	3/4	2	120/240	11.2/6.0
TD/TH4812	4800	3270	3220	3190	2940	2650	2350	3/4	2	120/240	12.1/6.6
TD/TH/TUP6801	5800	4250	4125	4000	3850	3650	3425	3/4	2	120/240	11.2/6.0
TD/TH/TUP6812	5800	4130	4000	3820	3630	3375	2740	3/4	2	120/240	12.1/6.6
TD/TH/TUP6801	6800	4750	4600	4475	4375	4250	4050	1	2	120/240	13.3/6.9
TD/TH/TUP6812	6800	4551	4440	4300	4080	3940	3680	1	2	120/240	14.2/7.6



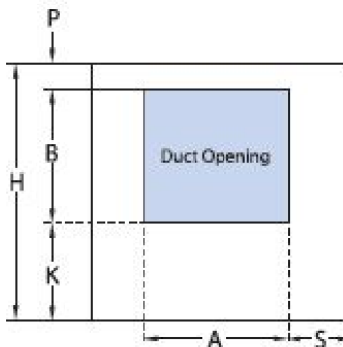
Top View (updraft)



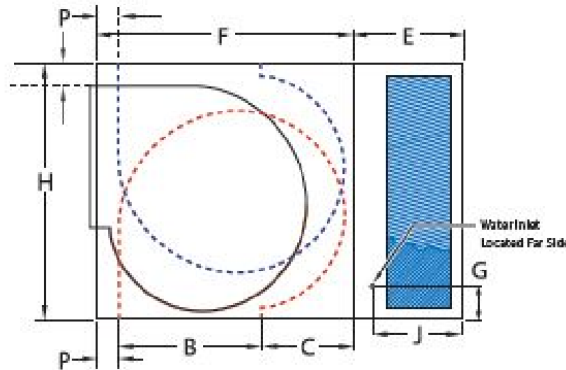
Top View

Ref #	Cooler Model	QTY.	CFM	Static Pressure	HP	Voltage
1						
2						
3						
4						
5						
6						
7						
8						
9						
10						

Project \_\_\_\_\_  
 Location \_\_\_\_\_  
 Architect \_\_\_\_\_  
 Engineer \_\_\_\_\_  
 Contractor \_\_\_\_\_  
 Submitted By \_\_\_\_\_  
 Date \_\_\_\_\_  
 Notes \_\_\_\_\_  
 \_\_\_\_\_  
 \_\_\_\_\_



End View



Side View

### Engineering Data

Model Number	Cabinet			Duct Opening		Down C	Side K	Water Inlet		Drain		P	S	Ship Weight	Opp. Weight		
	H	W	D	A	B			G	J	M	O						
TD4801	27 5/16	42	43	17 3/4	17 3/4	6 3/4		17	26	5 1/2	13 1/2	13 1/4	13	1 1/2	12 1/8	161	189
TH4801	27 5/16	42	43	17 3/4	17 3/4		8	17	26	5 1/2	13 1/2	13 1/4	13	1 1/2	12 1/8	161	189
TD4812	27 5/16	42	47	17 3/4	17 3/4	6 3/4		21	26	5 1/2	17 1/2	17 1/4	13	1 1/2	12 1/8	177	212
TH4812	27 5/16	42	47	17 3/4	17 3/4		8	21	26	5 1/2	17 1/2	17 1/4	13	1 1/2	12 1/8	177	212
TD6801	34 5/16	42	45	19 3/4	19 3/4	6 3/4		17	28	5 1/2	13 1/2	13 1/4	13	1 1/2	11 1/8	198	220
TH6801	34 5/16	42	45	19 3/4	19 3/4		11 5/16	17	28	5 1/2	13 1/2	13 1/4	13	3 1/4	11 1/8	198	220
TUP6801	34 5/16	42	45	19 3/4	19 3/4	6 3/4		17	28	5 1/2	13 1/2	13 1/4	13	1 1/2	11 1/8	198	220
TD6812	34 5/16	42	49	19 3/4	19 3/4	6 3/4		21	28	5 1/2	17 1/2	17 1/4	13	3 1/4	11 1/8	214	257
TH6812	34 5/16	42	49	19 3/4	19 3/4		11 5/16	21	28	5 1/2	17 1/2	17 1/4	13	1 1/2	11 1/8	214	257
TUP6812	34 5/16	42	49	19 3/4	19 3/4	6 3/4		21	28	5 1/2	17 1/2	17 1/4	13	1 1/2	11 1/8	214	257

## PHOENIX MANUFACTURING, INC.

3655 E. Roeser Rd. - Phoenix, AZ 85040 \*evapcool.com\* 602-437-1034