

CLIMATE MASTER
Residential Geothermal
Loop Circulator Pumps



| SCL# | Qty | Model# | HP | Price |
|--------|-----|---------|-----|--------|
| 168290 | 16 | AFCG1B2 | 1/3 | 320.00 |

GRUNDFOSS
Recirculator Pumps
Maintenance-Free



| SCL# | Qty | Model# | HP | Voltage | Price |
|--------|-----|----------|-----|----------|--------|
| 168184 | 22 | UP43-75F | 1/6 | 230/60/1 | 108.00 |

TACO High Velocity
Cartridge Circulators



| SCL# | Qty | Model# | HP | Conn | Price |
|--------|-----|---------|-----|--------------------|--------|
| 150279 | 13 | 0012-F4 | 1/8 | 1 1/4", 1 1/2", 2" | 150.00 |

TACO
6 Universal Zone Valve
For OPUS model G/Boiler



| SCL# | Qty | Model# | Description | Price |
|-------|-----|---------|---------------------------------|-------|
| 46842 | 88 | EMCC-Z6 | Control panel w/priority switch | 95.00 |

TACO Shut Off Valve
and Flange Set



| SCL# | Qty | Model# | Size | Price |
|------|-----|--------|--------|-------|
| 256 | 10 | 256 | 1 1/4" | 14.00 |

CONBRACO
Thermostatic Mixing Valves



| SCL# | Qty | Model# | Inlet/Outlet | Price |
|--------|-----|------------|--------------|-------|
| 165462 | 171 | 34A-104-03 | 3/4" CPVC | 32.00 |

HAYS
Shut Off Ball Valves



| SCL# | Qty | Model# | Conn | Price |
|--------|-----|---------|----------|-------|
| 168452 | 191 | C11-1/2 | 1/2" FPT | 10.00 |

FLOWGUARD
2" CPVC Ball Valves



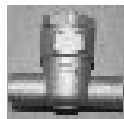
| SCL# | Qty | Model# | HxWxD | Price |
|--------|-----|------------|----------------|-------|
| 160206 | 56 | CBV-2000-S | 6 7/8x5x5 1/4" | 6.00 |

Siemens
Pneumatic Valves



| SCL# | Qty | Model# | Size | Price |
|-------|-----|--------|------|-------|
| 35533 | 5 | 4TP45 | 1/2" | 85.00 |

HENRY
Brass Check Valves
Use with R12, R22, & R502



| SCL# | Qty | Model# | Conn | Price |
|-------|-----|--------|----------|-------|
| 69516 | 7 | 116007 | 7/8" SWT | 55.00 |

ASCO
Actuator Replacement Kits



| SCL# | Qty | Model# | Voltage | Price |
|-------|-----|----------|---------------|-------|
| 29733 | 4 | T6871107 | 110-120/50-60 | 80.00 |

ABB AC Drives



Wall or Cabinet Mountable

| SCL# | Qty | Model# | HP | HXWxD | Price |
|--------|-----|-------------------|----|----------------|--------|
| 156835 | 22 | ACS150-03U-07A5-2 | 2 | 7 7/8x3x5 1/2" | 156.00 |

ACTION PUMP CO



Stainless Steel Drum Pumps

Includes plastic adapter

| SCL# | Qty | Model# | L X D | Price |
|--------|-----|---------|--------------|-------|
| 159210 | 15 | 0100710 | 43" x 1 1/2" | 95.00 |

CONTROL TECHNIQUES

Commander SE AC Drive

Features LED Parameter & Value Displays



| SCL# | Qty | Model# | HP | Input VAC | Price |
|--------|-----|------------|-------|-----------|--------|
| 156837 | 2 | SE33200550 | 7 1/2 | 240Volts | 400.00 |

BELL & GOSSETT

**Bearing Assembly
for Booster Pumps**



Includes 1.5oz lubricant & seal

| SCL# | Qty | Model# | Liquid Max Temp | Price |
|--------|-----|--------|-----------------|--------|
| 148853 | 4 | 189103 | 225 F | 156.00 |

DAYTON

Centrifical Pump



| SCL# | Qty | Model# | HP | Voltage | Price |
|--------|-----|----------|----|--------------|--------|
| 152331 | 1 | LTDH23TD | 5 | 230/460/60/3 | 430.00 |

MUELLER

Cyclomaster Ball Valves



| SCL# | Qty | Model# | Conn | Price |
|--------|-----|---------|---------------------|--------|
| 150347 | 6 | AC17870 | 3 1/8" Full Flow BV | 145.00 |

MUELLER
Pressure Relief Valves



| SCL# | Qty | Model# | Connection | Price |
|-------|-----|---------|-------------|-------|
| 20676 | 10 | AG15504 | 1/2x5/8"SAE | 14.00 |
| 24834 | 9 | AG15503 | 3/8x1/2SAE | 17.00 |

MUELLER
Pressure Relief Valves



| SCL# | Qty | Model# | Conn | Price |
|--------|-----|--------|-------------------|-------|
| 150391 | 12 | AE0391 | 1/2"MPT x 5/8"SAE | 8.00 |

DAYTON
Convertible Jet Tank Pump



| SCL# | Qty | Model# | Voltage | HP | Price |
|--------|-----|--------|---------|-----|---------|
| 147085 | 1 | D3P716 | 115/230 | 3/4 | 170.00* |

*Damaged

NORTON
Sanding Belts



| SCL# | Qty | Model# | Size | Grit | Price |
|--------|-----|-------------|--------|------|-------|
| 145252 | 145 | 78072727579 | 1 x 30 | 80 | 1.00 |
| 145251 | 50 | 78072722160 | 4 x 54 | 100 | 2.50 |

NIBCO Copper Couplings



| SCL# | Qty | Model# | LxD | Price |
|--------|-----|----------|----------|-------|
| 160272 | 44 | PC600-DS | 3x2 1/2" | 23.00 |

Run Capacitors

370 Volt - Oval

| SCL# | Qty | Mfd | Price |
|--------|------|--------|-------|
| 75085 | 2713 | 2 | .30 |
| 14479 | 871 | 4 | .80 |
| 14484 | 1600 | 7 | 1.00 |
| 42524 | 2043 | 12.5 | 1.75 |
| 35448 | 202 | 13.5+7 | 1.50 |
| 14502 | 69 | 15+3 | 1.65 |
| 94498 | 11 | 15+5 | 1.75 |
| 14441 | 95 | 16 | 1.25 |
| 88921 | 1932 | 17.5 | 1.65 |
| 44789 | 2286 | 17.5+4 | 1.25 |
| 70562 | 89 | 17.5+5 | 1.65 |
| 14033 | 2490 | 20 | 1.75 |
| 161860 | 81 | 20+3 | 1.75 |
| 61765 | 21 | 20+5 | 1.75 |
| 74101 | 83 | 25 | 2.50 |
| 14598 | 27 | 25+3 | 2.50 |
| 77175 | 153 | 25+4 | 2.50 |
| 74302 | 353 | 25+5 | 2.50 |
| 75531 | 29 | 25+7.5 | 3.00 |
| 14611 | 1 | 30 | 4.00 |
| 74291 | 20 | 30+7.5 | 4.00 |

400 Volt - Oval

| SCL# | Qty | Mfd | Price |
|-------|------|-------|-------|
| 30207 | 27 | 12+3 | 1.50 |
| 30190 | 159 | 13.5 | 1.50 |
| 42522 | 60 | 14+10 | 1.50 |
| 30208 | 45 | 18+6 | 1.75 |
| 35423 | 104 | 18+8 | 1.75 |
| 35424 | 594 | 19.5 | 1.75 |
| 35425 | 3450 | 20.5 | 1.75 |
| 30205 | 375 | 26 | 2.40 |

440 Volt - Oval

| SCL# | Qty | Mfd | Price |
|--------|-----|--------|-------|
| 47203 | 233 | 3 | 2.00 |
| 14663 | 588 | 15 | 2.00 |
| 75240 | 42 | 15+4 | 1.75 |
| 42320 | 43 | 15+5 | 2.00 |
| 83908 | 542 | 17.5 | 2.00 |
| 83761 | 184 | 17.5+4 | 2.00 |
| 73479 | 51 | 20 | 2.25 |
| 163703 | 40 | 20+5 | 3.00 |
| 30096 | 20 | 21+8 | 1.75 |
| 161858 | 51 | 20+20 | 3.00 |
| 94219 | 324 | 25 | 3.50 |
| 14670 | 192 | 25+5 | 3.50 |
| 14674 | 29 | 30+4 | 3.50 |
| 17615 | 28 | 40+3 | 4.00 |
| 42601 | 5 | 40+7.5 | 4.00 |
| 14699 | 28 | 45+5 | 4.00 |

Run Capacitors

370 Volt -Round

| SCL# | Qty | Mfd | Price |
|-------|------|----------|-------|
| 15441 | 727 | 8 | .90 |
| 14490 | 115 | 8.4 | .90 |
| 14491 | 15 | 10 | 1.50 |
| 20231 | 1477 | 12.5 | 1.75 |
| 15250 | 3724 | 15 | 1.75 |
| 25260 | 92 | 15+2 | 1.70 |
| 39672 | 374 | 15+2+1.5 | 1.70 |
| 53058 | 235 | 15+4 | 1.70 |
| 56597 | 40 | 15+7.5 | 1.70 |
| 74641 | 940 | 16 | 1.70 |
| 15458 | 142 | 17.5 | 3.00 |
| 34723 | 94 | 20+3 | 1.75 |
| 89099 | 15 | 20+4 | 1.75 |
| 74642 | 347 | 20+5 | 2.00 |
| 25251 | 81 | 20+7.5 | 1.75 |
| 34716 | 62 | 25+3.25 | 2.25 |
| 15391 | 186 | 25+7.5 | 2.00 |
| 67409 | 100 | 25+10 | 2.25 |
| 14610 | 235 | 27.5 | 2.25 |
| 15167 | 80 | 30+5 | 3.50 |
| 15422 | 3 | 45+10 | 5.00 |
| 15187 | 41 | 50 | 8.00 |
| 15398 | 9 | 80 | 9.00 |

400 Volt -Round

| SCL# | Qty | Mfd | Price |
|-------|-----|-------|-------|
| 73015 | 91 | 19.5 | 2.00 |
| 34720 | 241 | 25+10 | 2.25 |

440 Volt - Round

| SCL# | Qty | Mfd | Price |
|--------|------|--------|-------|
| 14662 | 63 | 12.5 | 1.75 |
| 168237 | 40 | 15+4 | 2.00 |
| 84193 | 978 | 17.5 | 2.00 |
| 15283 | 4810 | 20 | 5.00 |
| 42385 | 549 | 20+5 | 1.85 |
| 75245 | 1051 | 25 | 2.40 |
| 34712 | 43 | 25+8 | 2.40 |
| 15178 | 101 | 30 | 6.00 |
| 15439 | 72 | 30+7.5 | 3.00 |
| 15190 | 54 | 40 | 5.00 |
| 15271 | 32 | 60 | 6.00 |

480 Volt - Round

| SCL# | Qty | Mfd | Price |
|-------|-----|------|-------|
| 35940 | 171 | 16.5 | 1.75 |
| 15462 | 5 | 25 | 3.50 |

480 Volt - Oval

| SCL# | Qty | Mfd | Price |
|-------|-----|------|-------|
| 88919 | 24 | 3 | .70 |
| 75807 | 111 | 9+9 | .80 |
| 30173 | 819 | 16.3 | 2.00 |

Start Capacitors

125 VAC

| SCL# | Qty | Mfd | Price |
|--------|-----|---------|-------|
| 161704 | 153 | 145-174 | 1.00 |
| 145672 | 39 | 324-389 | 2.00 |

220-250 VAC

| SCL# | Qty | Mfd | Price |
|-------|------|--------|-------|
| 36479 | 135 | 25-30 | .35 |
| 32618 | 71 | 36-43 | .35 |
| 32619 | 4338 | 43-52 | .50 |
| 76110 | 198 | 43-53 | .50 |
| 94494 | 2900 | 53-64 | .60 |
| 54195 | 154 | 53-72 | .60 |
| 73480 | 845 | 64-77 | .60 |
| 32458 | 30 | 88-108 | 2.00 |

330 Volt - Round

| SCL# | Qty | Mfd | Price |
|--------|------|---------|-------|
| 15259 | 703 | 30-36 | .80 |
| 71685 | 309 | 108-130 | 1.75 |
| 15281 | 4986 | 189-227 | 3.00 |
| 11744 | 1225 | 270-324 | 3.00 |
| 167374 | 726 | 233-280 | 3.30 |

Run Capacitors

240 Volt -Round

| SCL# | Qty | Mfd | Price |
|-------|-----|-----|-------|
| 25303 | 559 | 7.5 | .55 |
| 14738 | 491 | 25 | 1.25 |
| 14742 | 320 | 334 | 1.25 |

300 Volt - Round

| SCL# | Qty | Mfd | Price |
|-------|------|------|-------|
| 73010 | 6817 | 8 | .60 |
| 36527 | 713 | 17.5 | .70 |
| 72625 | 273 | 20+8 | .90 |
| 39668 | 158 | 23.5 | 1.10 |

300 Volt - Oval

| SCL# | Qty | Mfd | Price |
|-------|-----|----------|-------|
| 36951 | 406 | 9.4 | .80 |
| 36989 | 379 | 10.5+2.5 | .80 |
| 36990 | 126 | 13 | .80 |

330 Volt - Oval

| SCL# | Qty | Mfd | Price |
|-------|-----|------|-------|
| 30063 | 163 | 7 | .60 |
| 30088 | 70 | 11+5 | .70 |
| 37189 | 51 | 17 | .80 |
| 30057 | 32 | 25 | 1.50 |

350 Volt - Oval

| SCL# | Qty | Mfd | Price |
|--------|------|---------|-------|
| 74952 | 1980 | .12 | .40 |
| 39602 | 234 | 16.5+16 | 1.30 |
| 167156 | 18 | 60 | 5.00 |

660 Volt - Oval

| SCL# | Qty | Mfd | Price |
|-------|-----|----------|-------|
| 72587 | 53 | 17.5+8.5 | 1.75 |

JACUZZI

Fiberglass Soaker Tubs

Color:Oyster



| SCL# | Qty | Model# | HxWxL | Series | Price |
|--------|-----|---------|-----------|----------------|--------|
| 160321 | 11 | N855969 | 19x43x62" | Gallery 5 oval | 430.00 |

JACUZZI

7 Jet Whirlpool Bathtubs

Color:White



| SCL# | Qty | Model# | HxWxL | Series | Price |
|--------|-----|---------|---------------|---------|--------|
| 160129 | 5 | 9590959 | 20 1/4x55x55" | Capella | 700.00 |

JACUZZI

Fiberglass Bathtubs



| SCL# | Qty | Model# | Color | Style | HxWxL | Price |
|--------|-----|---------|--------|-------|-----------|--------|
| 160064 | 6 | R261969 | Oyster | Round | 19x43x62" | 185.00 |
| 160250 | 10 | K325959 | White | Oval | 19x43x62" | 185.00 |

JACUZZI

Space Saver Bathtubs

Color:Oyster



| SCL# | Qty | Model# | HxWxL | Series | Price |
|--------|-----|---------|---------------|---------|--------|
| 160948 | 6 | U960969 | 20 1/2x60x60" | Capella | 425.00 |

JACUZZI

**Salon Spa
10-Jet Whirlpool Tub**

Color:Oyster



Series:Venicia

| SCL# | Qty | Model# | Drain | HxWxL | Price |
|--------|-----|---------|--------|----------|---------|
| 160654 | 1 | DY60969 | Center | 26x42x72 | 2200.00 |

JACUZZI

7-Jet Whirlpool Tubs

Color:Oyster



Series Riva 6

| SCL# | Qty | Model# | Drain | HxWxL | Price |
|--------|-----|---------|-------|---------------|---------|
| 160632 | 2 | ES60969 | Right | 20 1/2x42x72" | 1000.00 |

JACUZZI

6-Jet Whirlpool Tubs

Color:Oyster



Series: Milano

| SCL# | Qty | Model# | Drain | HxWxL | Price |
|--------|-----|---------|-------|---------------|--------|
| 160609 | 1 | H547969 | Right | 20 3/4x40x72" | 950.00 |

JACUZZI

6-Jet Whirlpool Tub

Color:Oyster



| SCL# | Qty | Model# | Drain | HxWxL | Price |
|--------|-----|---------|--------|-----------|----------|
| 160638 | 1 | EH85969 | Center | 26x40x72" | 1500.00* |

*Minor damage

JACUZZI

**Fiberglass
Skirted Bathtubs**

Color:White



| SCL# | Qty | Model# | HxWxL | Series | Price |
|--------|-----|---------|---------------|--------|--------|
| 160611 | 3 | H530959 | 19 1/4x60x36" | Nova | 425.00 |

KOHLER Windward

Drop-In Tubs w/Apron

Color:Biscuit w/Integral Apron



| SCL# | Qty | Model# | Drain | HxWxL | Price |
|--------|-----|--------------|------------|-----------|--------|
| 160245 | 14 | K-1113-RA-96 | Right Hand | 21x42x60" | 270.00 |

KOHLER

Bathroom Sinks

Color:White



| SCL# | Qty | Model# | Series | HxWxD | Price |
|--------|-----|----------|------------|--------------|-------|
| 160408 | 8 | 2279-4-0 | Devonshire | 8 1/2x20x17" | 50.00 |

KOHLER

Windward Drop-In Tubs

Color:Biscuit w/3-Flange



| SCL# | Qty | Model# | Drain | HxWxL | Price |
|--------|-----|-------------|-----------|-----------|--------|
| 160244 | 9 | K-1113-L-96 | Left Hand | 21x42x60" | 220.00 |

KOHLER

**Drop In
Fiberglass Bathtubs**

Color:Biscuit



Series: Winward

| SCL# | Qty | Model# | Drain | HxWxL | Price |
|--------|-----|---------|---------------|-----------|--------|
| 160582 | 16 | 1113-96 | Left or Right | 21x42x60" | 270.00 |

KOHLER

Undercounter Sinks

Stainless steel/No faucet holes



| SCL# | Qty | Model# | Size | Price |
|--------|-----|-----------|---------------|--------|
| 160521 | 12 | K-3341-NA | 18 3/8x7 5/8" | 220.00 |

KOHLER

Undercounter Lavatory

Color:Black & Tan/Cast Iron



| SCL# | Qty | Model# | Series | HxWxL | Price |
|--------|-----|--------------|-----------|--------------|--------|
| 160527 | 13 | K-2885-8U-KA | Man's Lav | 7 7/8x13x24" | 350.00 |

KOHLER

Elongated Toilet Bowls

Color: White



| SCL# | Qty | Model# | HxWxD | Price |
|--------|-----|-----------|-------------------|-------|
| 160508 | 7 | K4301-L-0 | 16 1/2x12 1/2x26" | 90.00 |

KOHLER

Elongated Toilet Bowls

Color: Mexican Sand



| SCL# | Qty | Model# | HxWxD | Price |
|--------|-----|-----------|---------------|--------|
| 160512 | 8 | K-4274-33 | 16 1/2x15x29" | 100.00 |

KOHLER

Toilet Tanks

Color: Mexican Sand



| SCL# | Qty | Model# | HxWxD | Price |
|--------|-----|-----------|------------------|-------|
| 160502 | 9 | K-4620-33 | 13 1/2x19 5/8x8" | 50.00 |

**LASCO Cavalcade
Fiberglass Corner Tubs**



| SCL# | Qty | Model# | Color | HxWxL | Price |
|--------|-----|-------------|---------|-----------|--------|
| 160162 | 5 | 3860620-BO | Bone | 22x60x60" | 420.00 |
| 160391 | 2 | 3860620-WH | White | 22x60x60" | 420.00 |
| 160390 | 3 | 3860620-BIS | Biscuit | 22x60x60" | 420.00 |

**MTI Oval Bathtub
Soakers Only**



Color: Biscuit
Universal drain can be either left or right

| SCL# | Qty | Model# | HxWxL | Price |
|--------|-----|--------------|---------------|---------|
| 162593 | 2 | QSODI6042-BT | 22x41 1/2x60" | 1500.00 |

**MTI Oval 6-Jet
Whirlpool Tub w/pump**



Color: Biscuit
Universal drain can be either left or right

| SCL# | Qty | Model# | HxWxL | Price |
|--------|-----|--------------|-------------------|---------|
| 162589 | 1 | QWODI6042-BT | 22x41 1/2x59 1/2" | 1100.00 |

**BRIGGS Low Consumption
Round Toilet Bowls**



Color: Bone

| SCL# | Qty | Model# | HxWxD | Price |
|--------|-----|---------|-------------------|-------|
| 162254 | 106 | 4320733 | 14 1/4x14x24 3/4" | 50.00 |

**BRIGGS Low Consumption
Toilet Tanks w/Lid**



Color: Bone/Trip Lever: Bone

| SCL# | Qty | Model# | HxWxD | Price |
|--------|-----|---------|----------|-------|
| 162208 | 94 | 4430733 | 14x19x9" | 23.00 |

BRIGGS Lavatory Pedestals



White Porcelain

| SCL# | Qty | Model# | HxWxD | Price |
|--------|-----|--------|-----------------|-------|
| 156672 | 121 | 6683 | 26 1/2x6 1/4x4" | 12.00 |

BRIGGS Steel Lavatory Bowls



Acid-Resistant Porcelain Enameled Steel

| SCL# | Qty | Model# | Color | Size | Price |
|--------|-----|----------|-------|--------------|-------|
| 156491 | 67 | 3004-130 | White | 17x20x7 1/2" | 9.00 |

BRIGGS Lavatory Bowls



White Porcelain

| SCL# | Qty | Model# | Series | Size | Price |
|--------|-----|---------------|--------|-----------|-------|
| 156673 | 52 | 6638-130-Slab | Belair | 8" Center | 17.00 |
| 156759 | 38 | 6634 | Belair | 4" Center | 17.00 |

BRIGGS Ultratuff Kitchen Sinks



Color: White

| SCL# | Qty | Model# | Type | HxWxD | Price |
|--------|-----|----------|-----------------|-----------|-------|
| 160161 | 24 | 3472-130 | Steel/Porcelain | 10x33x22" | 87.00 |

BRIGGS Anderson Bathroom Sinks



Color: Bone

| SCL# | Qty | Model# | Type | HxWxD | Price |
|--------|-----|----------|-----------------|--------------|-------|
| 160158 | 63 | 3004-733 | Steel/Porcelain | 7 1/2x20x17" | 14.00 |

TOTO Elongated Toilets



Color: Cotton

| SCL# | Qty | Model# | HxWxD | Price |
|--------|-----|----------|---------------|-------|
| 156543 | 31 | C704L#01 | 17x14x26 1/8" | 42.00 |

TOTO White Toilet Tanks



Trip Lever: White

| SCL# | Qty | Model# | HxWxD | Price |
|--------|-----|----------|------------------|-------|
| 156517 | 130 | ST703#01 | 15x17 1/2x7 1/2" | 17.00 |

TOTO Round Front Toilet Bowls



Color: White

| SCL# | Qty | Model# | HxWxD | Price |
|--------|-----|---------|---------------|-------|
| 156545 | 52 | C703#01 | 15x24 1/2x14" | 19.00 |

**TOTO Nexus Deck
Mounted Faucets**



| SCL# | Qty | Model# | Finish | Price |
|--------|-----|------------|---------------|-------|
| 156834 | 3 | TB794DD#CP | Polish/Chrome | 95.00 |

**TOTO Button Operated
Dual Max Toilet Tanks**



Color: Cotton White

| SCL# | Qty | Model# | HxWxD | Price |
|--------|-----|-----------|----------|-------|
| 165313 | 57 | ST413M-01 | 16x16x6" | 50.00 |

TOTO Elongated Toilet Bowls



Color: Cotton White

| SCL# | Qty | Model# | HxWxD | Price |
|--------|-----|----------|------------------|--------|
| 165309 | 24 | CT414-01 | 17 1/8x14 1/2x27 | 110.00 |

MAAX/AKER 60" Fiberglass Shower Units



| SCL# | Qty | Model# | Color | HxWxD | Seat | Price |
|--------|-----|----------|-------|---------------|------|--------|
| 152947 | 1 | SHS60-LH | White | 78 1/2x60x36" | Left | 170.00 |

**MAAX/AKER Bodywrap
8-Jet Whirlpool Tubs**



Color: White/Flanged

| SCL# | Qty | Model# | Series | HxWxL | Price |
|--------|-----|----------|--------|----------------|--------|
| 156494 | 3 | SBF-3600 | Alcove | 23x35 1/2"x60" | 400.00 |

MAAX/AKER Fiberglass Tub/Showers



| SCL# | Qty | Model# | HxWxD | Color | Price |
|--------|-----|----------------|---------------|---------|--------|
| 152730 | 1 | TS-3060-BIS-RH | 74 3/4x30x60" | Biscuit | 120.00 |

STERLING Bathroom Tubs



Color: Bone

| SCL# | Qty | Model# | Type | HxWxL | Price |
|--------|-----|-------------|--------------|-----------|-------|
| 156489 | 16 | 71041110-11 | Left Handed | 16x29x60" | 50.00 |
| 156749 | 6 | 71041120-11 | Right Handed | 16x29x60" | 50.00 |

DELTA Widespread

Lavatory Faucet w/o handles

Michael Graves Collection



| SCL# | Qty | Model# | Finish | Price |
|--------|-----|-------------|-------------|--------|
| 160744 | 77 | 4588-SSGLHP | Solid Brass | 114.00 |

DELTA Two-Handle

Lavatory Faucets

Series: Botanical less handles



| SCL# | Qty | Model# | Finish | Price |
|--------|-----|----------|--------|-------|
| 160763 | 103 | 2565-LHP | Chrome | 37.00 |

DELTA

Tub/Shower Faucets



| SCL# | Qty | Model# | Finish | Price |
|--------|-----|-------------|------------|-------|
| 153168 | 1 | T17230-NC | Nickel | 66.00 |
| 156482 | 47 | T14430NNLHP | Brilliance | 68.00 |
| 153165 | 1 | T17430-NC | Nickel | 86.00 |
| 153178 | 4 | T17255-PB | Bronze | 90.00 |

DELTA

Centerset C-Spout Lavatory Faucets



| SCL# | Qty | Model#Spout | LxH | Price |
|--------|-----|-------------|-----------|-------|
| 159041 | 31 | 2583-CBLHP | 5"x4 7/8" | 38.00 |

DELTA

Lavatory Faucets

*Does not include handle parts



| SCL# | Qty | Model# | Finish | Price |
|--------|-----|-------------|---------------------|-------|
| 153176 | 9 | 2588-SSGLHP | Chrome | 46.00 |
| 153161 | 4 | 3530-NCLHP | Pearl/Nickel/Chrome | 76.00 |
| 153174 | 2 | 3555-NNLHP | Chrome | 90.00 |

DELTA

Bath Valves

Brass Construction



| SCL# | Qty | Model# | Style | Price |
|--------|-----|----------|--------------------------|-------|
| 153162 | 10 | R1700-TP | 1700 Series Tub & Shower | 21.00 |

DELTA

Single-Handle Kitchen Faucets



| SCL# | Qty | Model# | Finish | Price |
|--------|-----|--------|--------|-------|
| 165395 | 19 | 340-TP | Chrome | 66.00 |

SLOAN

Sensor Activated Hand Washing Faucets

Color: Silver



| SCL# | Qty | Model# | Finish | Price |
|--------|-----|------------|----------------|--------|
| 160651 | 4 | EAF150-ISM | Gold or Silver | 430.00 |

AMERICAN STANDARD

Single Basin Kitchen Sinks

Black Amcast/ Left side drain



| SCL# | Qty | Model# | Holes | Size | Price |
|--------|-----|--------------|-------|----------|-------|
| 156667 | 1 | 7172.804.178 | 4 | 9x25x22" | 95.00 |

MOEN

Shower Faucet Kits

Finish: Brushed Nickel



| SCL# | Qty | Model# | Type | Price |
|--------|-----|---------|--------------|-------|
| 160294 | 616 | T2444ST | Single Lever | 66.00 |

MOEN

Brushed Chrome Faucets

| SCL# | Qty | Model# | Series | Price |
|--------|-----|--------|---------|-------|
| 160165 | 39 | 4945BC | Chateau | 70.00 |



MOEN

Kitchen Sink Fixtures

Finish: Antique Nickel

| SCL# | Qty | Model# | Type | Price |
|--------|-----|--------|---------------|--------|
| 160295 | 16 | T920AN | Double Handle | 159.00 |



MOEN

Chrome Single Handle Shower Trim Kits

| SCL# | Qty | Model# | Series | Price |
|--------|-----|--------|----------|-------|
| 153157 | 2 | TL2377 | Castleby | 56.00 |



MOEN Two-Handle Roman Tub Faucets

Series: Castleby

| SCL# | Qty | Model# | Finish | Price |
|--------|-----|----------|--------------|--------|
| 160940 | 14 | T6985STS | Pearl Nickel | 176.00 |



MOEN Posi-Temp Handle Showers

Series: Asceri

| SCL# | Qty | Model# | Function | Price |
|--------|-----|----------|-------------|--------|
| 156771 | 14 | T2806CPM | Rain Shower | 152.00 |



MOEN Two-Handle Lavatory Faucets

Series: Monticello

| SCL# | Qty | Model# | Finish | Price |
|--------|-----|--------|-----------------------|-------|
| 165225 | 27 | 4551CP | Chrome/Polished Brass | 75.00 |



MOEN Two-Handle Roman Tub Faucets

Series: Monticello

| SCL# | Qty | Model# | Finish | Price |
|--------|-----|--------|-----------------|--------|
| 160942 | 20 | T951CP | Polished/Chrome | 148.00 |



MOEN Two-Handle Bathroom Faucets

Series: Monticello

| SCL# | Qty | Model# | Finish | Price |
|--------|-----|---------|-----------------------|-------|
| 156479 | 16 | T4560CP | Chrome/Polished Brass | 85.00 |

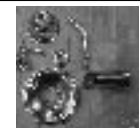


MOEN

Tub and Shower Trim

Kingsley Series

| SCL# | Qty | Model# | Finish | Price |
|--------|-----|---------|--------|-------|
| 165337 | 9 | T2113CP | Chrome | 75.00 |



AMERICAN STANDARD

**Single Control
Lavatory Faucets**



Style: Colony

| SCL# | Qty | Model# | Finish | Price |
|--------|-----|-------------|--------|-------|
| 156781 | 156 | 2175500.002 | Chrome | 39.00 |

**SOUTHERN INT
42" Polished Brass
Ceiling Fans**



*No light kit/Casa Series

| SCL# | Qty | Model# | Description | Price |
|-------|-----|-------------|----------------------------|-------|
| 78553 | 29 | BK100BB4240 | 4 Oak blades,3-speed motor | 13.00 |

**MOEN
Two-Handle
Roman Tub Faucets**



Series: Villeta

| SCL# | Qty | Model# | Finish | Price |
|--------|-----|--------|-----------------|-------|
| 156470 | 43 | TL940 | Polished Chrome | 85.00 |

**LEDCO White
Undrilled Masonite
Molded Panel Doors**



| SCL# | Qty | Model# | HxWxD | Price |
|-------|-----|---------|--------------|-------|
| 68191 | 33 | 3/06/08 | 80x36x1 3/8" | 26.00 |

**MOEN
Single-Handle
Tub/Shower Faucet Heads**



| SCL# | Qty | Model# | Finish | Price |
|--------|-----|----------|--------|--------|
| 156480 | 59 | T2807CPM | Chrome | 100.00 |

**PATIO DOORS
Patio Screen Doors**



| SCL# | Qty | Model# | Finish | WxH | Price |
|-------|-----|--------|------------|---------|-------|
| 39114 | 42 | 145371 | White/Alum | 48"x78" | 13.00 |
| 39113 | 23 | K129A | Black/Alum | 24"x78" | 8.00 |

**ELKAY
Double Kitchen Sinks**



Nickel bearing stainless steel

| SCL# | Qty | Model# | Holes | Size | Price |
|--------|-----|--------------|-------|---------------|--------|
| 156485 | 7 | DLRW332210-3 | 3 | 10 1/2x33x22" | 530.00 |

**ELKAY
Double Kitchen Sink**



Nickel bearing stainless steel

| SCL# | Qty | Model# | Holes | Size | Price |
|--------|-----|------------|-------|---------------|--------|
| 159007 | 1 | STLR3322R2 | 2 | 10 1/4x33x22" | 375.00 |

**ELKAY
Single Kitchen Sinks**



Stainless steel

| SCL# | Qty | Model# | Holes | Size | Price |
|--------|-----|------------|-------|----------|--------|
| 160853 | 2 | LRQ1517-3H | 3 | 8X15X20" | 220.00 |

**AMERICAN STANDARD
Undermount Kitchen Sinks**



Culinaire Series/Stainless steel

| SCL# | Qty | Model# | Size | Price |
|--------|-----|--------------|--------------|--------|
| 165322 | 5 | 7501,000,075 | 8x23x20 1/2" | 132.00 |

**CENTURY
Wall/Bath
2 Light Fixtures**



White Smoke glass globes

| SCL# | Qty | Model# | Finish | H xW x D | Price |
|-------|-----|--------|---------------|----------|-------|
| 76080 | 79 | 622549 | Platinum/Rust | 10x16x9" | 8.00 |

**ZURN
Floor Drains w/Cleanout**



| SCL# | Qty | Model# | Size | Price |
|--------|-----|----------|------|--------|
| 160311 | 2 | Z548-3HB | 3" | 570.00 |

WORTH HOME PRODUCTS

Wood Air Grilles and Vent Covers

• Great for grilles and air exhaust ventilation .

Includes non-filtered sleeve

| SCL# | Qty | Model# | WxH | Price |
|--------|-----|-------------|--------|-------|
| 154156 | 29 | WHP-G3251NF | 20X30" | 32.00 |
| 154157 | 23 | WHP-G4341NF | 20X20" | 24.00 |
| 154158 | 19 | WHP-G5431NF | 16X25" | 24.00 |
| 154159 | 44 | WHP-G6581NF | 20X25" | 27.00 |

HART & COOLEY

Air Grilles

| SCL# | Qty | Model# | Size | Color | Price |
|--------|-----|------------|-----------|-------|-------|
| 167709 | 60 | 42148GS | 4" x 8" | Brown | 3.00 |
| 29735 | 109 | 421-6X14B | 6" x 14" | Brown | 6.00 |
| 146734 | 9 | 672-18X6 | 8" x 6" | White | 3.50 |
| 146818 | 26 | 672-12-10W | 12" x 10" | White | 4.50 |
| 146821 | 29 | 672-12-8W | 12" x 8" | White | 2.75 |
| 83809 | 16 | 672-12X12W | 12" x 12" | White | 3.60 |
| 11602 | 2 | 672-14X6W | 14" x 6" | White | 1.80 |
| 167712 | 167 | H302-14x6W | 14" x 6" | White | 8.00 |
| 146736 | 16 | 672-14X8 | 14" x 8" | White | 2.75 |
| 146816 | 7 | 672-14-10W | 14" x 10" | White | 4.50 |
| 146873 | 3 | 672-30-12W | 30" x 12" | White | 5.50 |
| 167777 | 8 | 672-20X25W | 20" x 25" | White | 16.00 |

HART & COOLEY

Filter Grilles

Color: White

| SCL# | Qty | Model# | Size | Price |
|--------|-----|-------------|-----------|-------|
| 167720 | 58 | 682-10x8W | 10" x 8" | 2.00 |
| 167760 | 13 | 673-10x30 | 10" x 20" | 17.00 |
| 11793 | 16 | 673-12X12W | 12" x 12" | 9.00 |
| 167748 | 1 | 673-12x20W | 12" x 20" | 10.00 |
| 167754 | 4 | 673-14x20W | 14" x 20" | 11.00 |
| 167758 | 3 | 673-14x24 | 14" x 24" | 8.00 |
| 167768 | 5 | 673-16x25W | 16" x 25" | 15.00 |
| 146678 | 6 | 96AFB-18X18 | 18" x 18" | 16.00 |
| 76062 | 24 | 672-20x14 | 20" x 14" | 8.00 |
| 167761 | 9 | 673-20x16 | 20" x 16" | 17.00 |
| 147035 | 13 | 673-3012W | 30" x 12" | 16.00 |

METAL-FAB B-Vent Pipes

| SCL# | Qty | Model# | DxL | Price |
|--------|-----|--------|-------|-------|
| 82247 | 100 | 3M24 | 3x34" | 3.60 |
| 27037 | 175 | 3M18 | 3x18" | 2.90 |
| 140096 | 96 | 4M18 | 4x18" | 3.60 |
| 76078 | 4 | 4M24 | 4x24" | 4.50 |



Co-Axial Roof Jacks

| SCL# | Qty | Model# | Size | Price |
|--------|-----|-------------|----------|--------|
| 165542 | 40 | AP14363A-2 | 24"-37" | 79.00 |
| 165552 | 75 | AP13335B | 33"-68" | 79.00 |
| 165562 | 94 | AP-12118D-1 | 48-95" | 79.00 |
| 165564 | 55 | AP14363D-2 | 60"-130" | 126.00 |

PROTECH

Furnace Burner Assembly

| SCL# | Qty | Model# | Tubes | HxWxD | Price |
|--------|-----|-------------|-------|---------------------|-------|
| 154935 | 1 | 75-22164-03 | 3 | 1 3/4x9 1/2x22 3/8" | 42.00 |
| 151806 | 8 | 75-22164-04 | 4 | 1 3/4x13x22 1/2" | 49.00 |
| 151796 | 6 | 75-22164-05 | 5 | 17x24 1/2x2" | 60.00 |
| 155546 | 5 | 75-22164-06 | 6 | 22x20x22 1/2" | 73.00 |

FIREX

Duct Smoke Detectors

| SCL# | Qty | Model# | Volts | CFM Range | Price |
|--------|-----|----------|-------------|-------------|-------|
| 161369 | 25 | 2650661 | 115AC/230AC | 500 to 4000 | 50.00 |
| 161988 | 52 | 2650-660 | 115AC/230AC | 500 to 4000 | 50.00 |

AIR FILTER ALERT

Air Filter Monitoring Systems

Detects reduced airflow caused by dirty, clogged air filters.

| SCL# | Qty | Model# | HxWxD | Price |
|--------|-----|---------|--------------------|--------|
| 163814 | 12 | AFA1001 | 3 1/2x2 1/2x1 1/4" | 200.00 |

AMERICAN STANDARD

Electronic Air Cleaners

For Furnaces or Air Handlers

| SCL# | Qty | Model# | Volts | HxWxD | Price |
|-------|-----|-------------|-------|----------|--------|
| 38533 | 7 | TFE215A9AH3 | 120 | 26x9x29" | 175.00 |

DAYTON

Dust Collectors

| SCL# | Qty | Model# | HP | Voltage | Price |
|--------|-----|--------|-------|--------------|--------|
| 78952 | 2 | 3AA31A | 3/4 | 115/230/60/1 | 250.00 |
| 152453 | 1 | 3AA18B | 1 1/2 | 230/440/60/3 | 360.00 |

VAPAC

Self Generative

Steam Humidifiers

Has a 24 volt transformer for internal control circuit,
2 keys to lock access door

| SCL# | Qty | Model# | Voltage | Amps | Price |
|--------|-----|--------|-----------|------|--------|
| 165250 | 1 | V8L3 | 240/60/3 | 15.6 | 400.00 |
| 165246 | 1 | V4L2 | 208//60/1 | 20.6 | 400.00 |



TRANE™

High/Low Voltage Control Kits

For Mini Split Systems

| SCL# | Qty | Model# | Voltage | Price |
|--------|-----|-----------|---------------|-------|
| 165925 | 29 | BAYHVL001 | 208-240/50/60 | 30.00 |



Twinning Kits

• For Connecting 2 Furnaces Together

| SCL# | Qty | Model# | WxDxH | Price |
|-------|-----|------------|-------|-------|
| 52844 | 11 | 316188-301 | 9x7x4 | 45.00 |

AMERICAN STANDARD

Filter Frames

| SCL# | Qty | Model# | HxWxD | Price |
|--------|-----|-------------|----------------------|-------|
| 166031 | 31 | BAYFLTR015A | 23 1/2x20 7/8x3 1/2" | 39.00 |

MARLEY

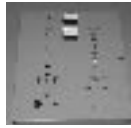
Electric Baseboard Heaters

Color: Off-white

| SCL# | Qty | Model# | Size | Volt | Watts | Price |
|--------|-----|---------|--------|------------|---------|-------|
| 166879 | 4 | B25726W | 2.5 ft | 208-230/60 | 375/500 | 24.00 |



Heat Pump Loop Controllers



Water Temp Control Panel
With Option A & B

| SCL# | Qty | Model# | Heat Source | Heat Rejector | Price |
|--------|-----|-------------|-------------|---------------|--------|
| 146289 | 2 | 50HQ-900541 | 4 stage | 6 stage | 750.00 |

With Option A & C

| SCL# | Qty | Model# | Heat Source | Heat Rejector | Price |
|--------|-----|-------------|-------------|---------------|--------|
| 146284 | 4 | 50HQ-900451 | 2 stage | 4 stage | 650.00 |

With Option B

| SCL# | Qty | Model# | Heat Source | Heat Rejector | Price |
|--------|-----|-------------|-------------|---------------|--------|
| 146286 | 6 | 50HQ-900521 | 4 stage | 6 stage | 650.00 |

WILSPEC TECHNOLOGIES

High Pressure Controls



| SCL# | Qty | Model# | Connection | Price |
|--------|-----|---------------|------------|-------|
| 151805 | 25 | HM200-25-0002 | 1/4" SAE | 8.00 |



Control Boards

Use with Condensing Units



| SCL# | Qty | Model# | HxWxD | Price |
|--------|-----|-------------|----------------|-------|
| 151555 | 22 | 49A22-101B1 | 1x7 7/8x5 7/8" | 48.00 |



Defrost Control Boards



| SCL# | Qty | Model# | HxWxD | Price |
|--------|-----|----------------|----------------|-------|
| 151491 | 11 | DDL-122131-2RH | 5 5/8x3 1/2x2" | 20.00 |



Add-On Indoor Heat Pump Control Panels



For E*FH series heat pumps

| SCL# | Qty | Model# | Voltage | Price |
|-------|-----|--------------|----------|-------|
| 98242 | 28 | 2AC02700401A | 115/60/1 | 12.00 |



Center Panel Assembly



| SCL# | Qty | Model# | Cells | HxWxD | Price |
|--------|-----|-------------|-------|------------------|-------|
| 155470 | 3 | AS-61640-03 | 4 | 15x28 7/8x1 3/4" | 56.00 |
| 155471 | 5 | AS-61640-04 | 5 | 29x18 1/4x2" | 54.00 |
| 155473 | 1 | AS-61640-05 | 6 | 29x22x2" | 84.00 |



Control Board Field Testers

.. For 38SQ Units



| SCL# | Qty | Model# | Price |
|-------|-----|------------|-------|
| 49792 | 4 | 38SQ900001 | 26.00 |



O-Rings



| SCL# | Qty | Model# | Diameter | Price |
|--------|-----|-------------|----------|-------|
| 150474 | 87 | KK71EX263 | 11" | 3.00 |
| 150386 | 13 | KK71GW225 | 70" | 10.00 |
| 150384 | 17 | KK71GW408LA | 126" | 16.00 |



Low Temp Chip



| SCL# | Qty | Model# | Description | Price |
|--------|-----|--------------|---------------------|--------|
| 150405 | 8 | CAD060-95623 | 41 Degree/12.5V PMG | 300.00 |



Standard Repeater Panels



| SCL# | Qty | Model# | Description | Price |
|-------|-----|-------------|---------------|--------|
| 79176 | 10 | 50HQ-900161 | Surface Mount | 260.00 |



Power Exhausts

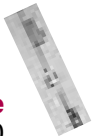


No mounting hardware/instructions

| SCL# | Qty | Model# | Ton | HxWxD | Price |
|--------|-----|-------------|-----|-----------------------|--------|
| 150784 | 6 | 2PE04703025 | 3-6 | 15 1/4x24 3/4x29 1/2" | 390.00 |

BRASSCRAFT

Coated ST Steel Gas Connector



| SCL# | Qty | Model# | Size | Price |
|--------|-----|------------|-------------|-------|
| 145790 | 46 | CSSD44E-18 | 1/2OD x 18" | 3.00 |
| 145836 | 143 | CSSD48-48 | 1/2ODx48" | 4.00 |

SAFE AIR/DOWCO

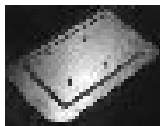
Steel Access Panels



| SCL# | Qty | Model# | HxD | Price |
|--------|-----|----------|---------|-------|
| 154842 | 116 | SAC-12X8 | 12 x 8" | 30.00 |



Compressor Mounting Plate Assembly



| SCL# | Qty | Model# | Size | Price |
|-------|-----|------------|----------|-------|
| 85200 | 3 | 50DK400229 | 1x26x16" | 42.00 |



Electric Heat Kits



| SCL# | Qty | Model# | Voltage | KW | Price |
|-------|-----|--------------|--------------|----|--------|
| 35354 | 2 | RXHE-DE020CA | 208/230/60/3 | 20 | 240.00 |

GOODMAN

Electric Heat Kits

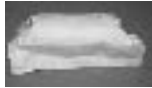


| SCL# | Qty | Model# | KW | Voltage | Price |
|--------|-----|----------|------|-----------------|--------|
| 24791 | 4 | HKR-05A | 4.75 | 208-240/50-60/1 | 44.00 |
| 51418 | 1 | HK05-1 | 4.8 | 208-230/60/1 | 63.00 |
| 167773 | 1 | HKR-08A | 7.0 | 208-240/50-60/1 | 48.00 |
| 167759 | 1 | HKR-10CB | 9.5 | 208-240/50-60/1 | 55.00 |
| 11740 | 4 | HKR-15CB | 14.5 | 208-240/50-60/1 | 120.00 |
| 167756 | 1 | HKR-20CB | 19 | 208-240/50-60/1 | 85.00 |
| 54336 | 1 | HK20-3 | 20 | 208-230/60/3 | 149.00 |
| 92168 | 1 | HKCB30-2 | 30 | 208-230/60/3 | 263.00 |

LUDLOW CORP

Filter Core Replacements

For use with 4" shell



| SCL# | Qty | Model# | Size | Price |
|-------|-----|------------|-----------|-------|
| 33621 | 17 | MIL-B-131H | 4"x7 1/2" | 15.00 |

PREFERED PARTS

Flange Elements



| SCL# | Qty | Model# | Voltage | Price |
|--------|-----|---------|-----------|-------|
| 154153 | 54 | SP6614G | 240V/350W | 6.00 |

PROTECH

Replacement

Heater Elements



| SCL# | Qty | Model# | HxWxD |
|-------|-----|-------------|-------------|
| 47098 | 32 | AS-58386-92 | 1 1/2X3/4X1 |

FRIGIDAIRE

Window A/C



| SCL# | Qty | Model# | BTU | Voltage | Price |
|--------|-----|--------|-------------|--------------|--------|
| 157470 | 2 | FAS296 | 28500/28000 | 208-230/60/1 | 370.00 |



Window AC Installation Kits



| SCL# | Qty | Model# | Price |
|--------|-----|----------|-------|
| 150315 | 46 | 05825050 | 19.00 |



AC Window Mounts



Adjustable

| SCL# | Qty | Model# | Dimensions | Price |
|--------|-----|------------|----------------------|-------|
| 150309 | 54 | 51GM400361 | 20 x 13 1/2 x 1 3/8" | 10.00 |

SCHWANK

Infrared Natural

Gas Heater



| SCL# | Qty | Model# | BTU | Voltage | Price |
|--------|-----|--------------|---------|----------|--------|
| 145539 | 1 | SEM-200-N-CF | 200,000 | 120/60/1 | 120.00 |



Disconnect Switch Kits



| SCL# | Qty | Model# | Description | Price |
|--------|-----|----------|-------------------------------|-------|
| 151508 | 10 | RXR-AN01 | For 15 & 20 Ton Packaged A/CX | 24.00 |

THERMO

Thru the Wall Line Set Kits

Thermothimble



| SCL# | Qty | Model# | Price |
|--------|-----|--------|-------|
| 155795 | 20 | 44002* | 4.00 |

MECHANICAL INGENUITY

Refrigeration Leak

Prevention Kits



Includes Starpower Heat blankets

| SCL# | Qty | Model# | Volts | 300 Price |
|--------|-----|--------------|-------|-----------|
| 145715 | 4 | RPC-9090-PS4 | 480V | 3000.00 |

MITSUBISHI

Extension



Piping Kits

| SCL# | Qty | Model# | Description | Price |
|--------|-----|--------------|---------------|--------|
| 148315 | 7 | MAC-662PI-US | 1/2 X 1/4"SAE | 110.00 |

CHAMPION

Pulley Cord Kits



For Evaporative Cooler

| SCL# | Qty | Model# | Description | Cord | Price |
|-------|-----|--------|------------------------|------|-------|
| 51094 | 94 | 3UP-35 | 4 1/4"x1/2" Bore x1/2" | 34" | 12.00 |

SUNROC

Wall Mount Dual

Water Cooler Kits



Unassembled/Stainless Steel

| SCL# | Qty | Model# | Price |
|--------|-----|-----------------|---------|
| 161567 | 1 | F110PM/F140PM | 700.00* |
| 161553 | 2 | DF-3401/DF-3301 | 700.00 |

*Damaged



Hose Kits



18" Steel Braided

| SCL# | Qty | Model# | Connection | Price |
|-------|-----|--------------|------------|--------|
| 86657 | 11 | CBY1251-0180 | 1 1/4" | 100.00 |

PROTECH

Compressor

Replacement Tubing Kits



| SCL# | Qty | Model# | Price |
|--------|-----|-------------|--------|
| 154110 | 3 | AS-25255-03 | 150.00 |

TUTCO

Heat Element Repair Kits



| SCL# | Qty | Model# | Price |
|--------|-----|------------|-------|
| 150468 | 10 | 50DQ660005 | 26.00 |

UNIVERSAL PARTS

Universal Start Kits



| SCL# | Qty | Model# | Price |
|-------|-----|---------|-------|
| 48951 | 46 | SK-D1-1 | 8.00 |