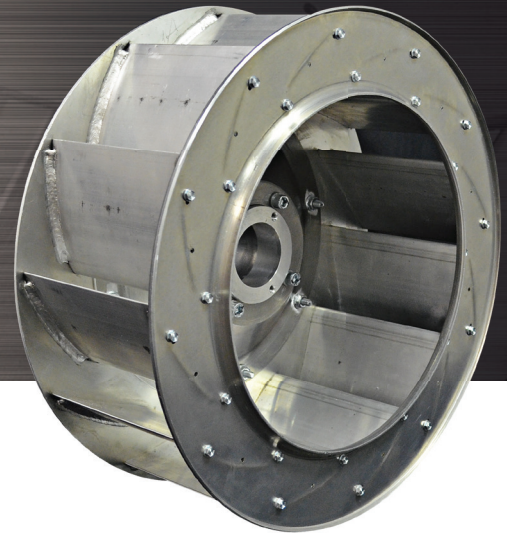
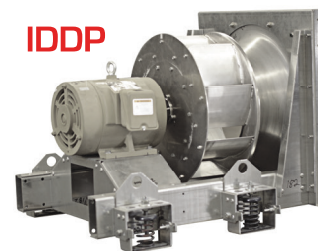
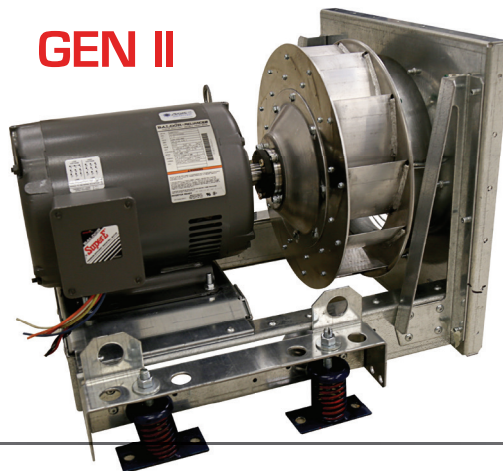


GEN II DDP



HIGH PERFORMANCE DIRECT DRIVE PLENUM FANS

Lau has combined our comprehensive expertise and more than 80 years of air moving experience to design plenum fans are both economical and environmentally friendly.



FEATURES

- Compact Size & Weight
- Reduced Inlet Cone Technology
- Several Isolation Configuration Options Available
- Rigid - Neoprene - Spring - Seismic
- Higher Efficiency
- Manufactured with Lau's Corus Wheel - Welded, Airfoil Aluminum Wheel
- Direct Drive

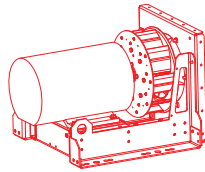
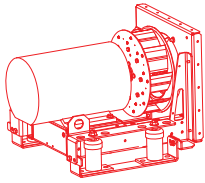
DESIGN HIGHLIGHTS

SIZES	10.5" through 40.25"
EFFICIENCY	74% Peak Total: FEG 80
FLOW	Up to 55,000 cfm
PRESSURE	Up to 8 inches wg

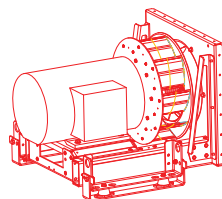
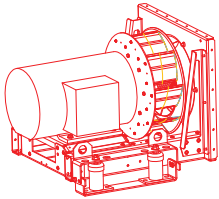
OPTIONS

- Piezometer Pick Up Pressure Tap
- Inlet / Outlet Screen

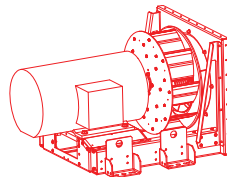
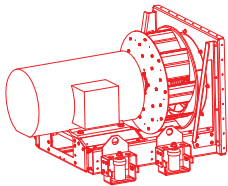
MOUNTING OPTIONS FOR EVERY APPLICATION.



MODELS 105-135 INTEGRAL FRAME



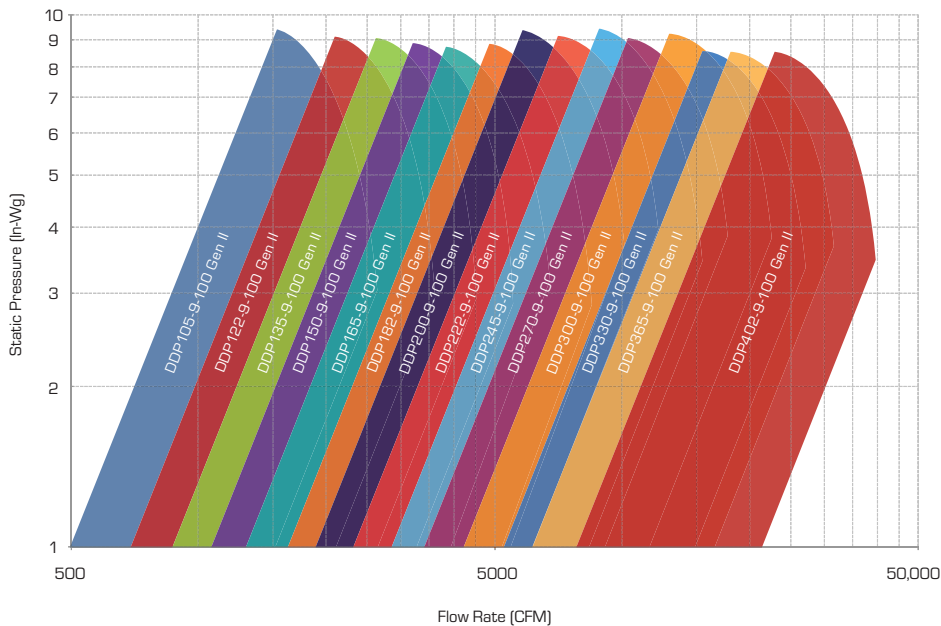
MODELS 150-165 UNITIZED



MODELS 182-402 INDIVIDUALIZED

MOUNTING OPTIONS BY SIZE

	Rigid Mount	Rubber	Spring	Seismic
105	X	X	X	X
122	X	X	X	X
135	X	X	X	X
150	X	X	X	X
165	X	X	X	X
182	X		X	X
200	X		X	X
222	X		X	X
245	X		X	X
270	X		X	X
300	X		X	X
330	X		X	X
365	X		X	X
402	X		X	X



For your application specific performance, please refer to Element at www.laufan.com/element

1 Sort

Make selections based on fan technology and operating points, or simply by energy efficiency and operating points.

2 Compare

Compare side by side performance, size, efficiency and operating costs of the top 20 selections and quickly identify the optimum air moving solution to meet your application.

GEN II DDP

For more information visit LauFan.com.
Call 937-476-6500

Follow Lau @LauOEM



OUR EXPERTISE, YOUR AIR-MOVING SOLUTION