

A801D

PRODUCT SPECIFICATIONS

SINGLE STAGE GAS FURNACE

FORM NO. A801D-100 (10/2018)



INSTALLATION FEATURES

- Left or right utility connections
- "L" designated models comply with California's South Coast Air Quality Management district Low NOx requirements
- Removable floor base for bottom return air
- Zero step horizontal conversion

WARRANTY

10 year limited parts warranty / lifetime heat exchanger warranty available. See limited warranty document for details.

Note: Not For Sale in Canada

California Only

If installed in South Coast Air Quality Management District (SCAQMD) only: This furnace does not meet the SCAQMD Rule 1111 NOx emission limit (14 ng/J), and thus is subject to a mitigation fee of up to \$450. This furnace is not eligible for the Clean Air Furnace Rebate Program: www.CleanAirFurnaceRebate.com.

If installed in San Joaquin Valley Air Pollution Control District (SJVAPCD) only: This furnace does not meet the SJVAPCD Rule 4905 NOx emission limit (14 ng/J), and thus is subject to a mitigation fee of up to \$450.

CONFIGURATIONS

- Upflow / Horizontal
- Downflow

HEAT EXCHANGER DESIGN

- Aluminized steel crimped non-welded clamshell heat exchanger.

CABINET DESIGN

- Compact 33" height
- Standardized widths for easy coil fit

AIR DELIVERY SYSTEM

- Multi-speed PSC blower motor
- Easily removable slide out blower design

CONTROLS

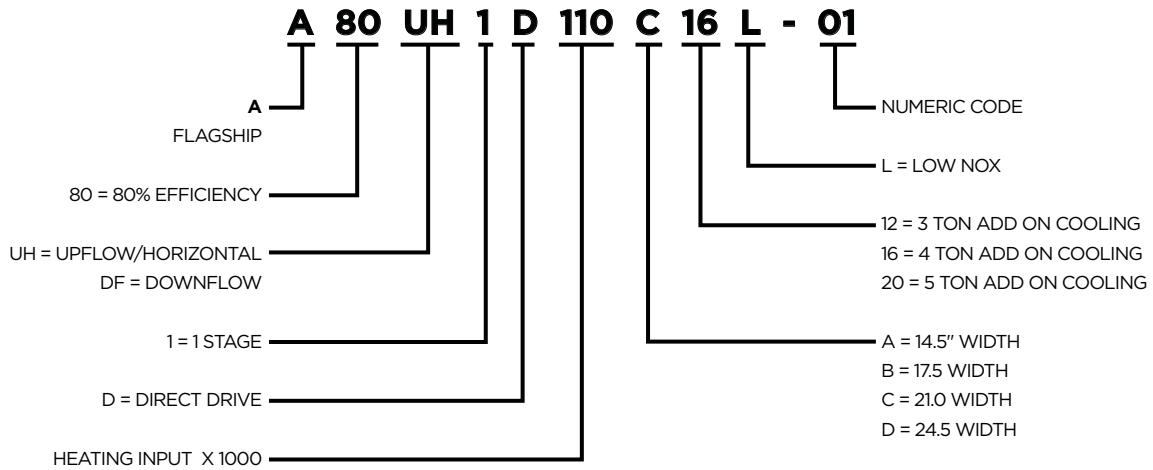
- Single stage gas valve
- Self diagnostics saving last 5 fault codes regardless of power interruption

VENTING

- Rotatable draft inducer for venting flexibility



MODEL NUMBER GUIDE



PHYSICAL AND ELECTRICAL DATA

| | Model | Input (Btuh) | Output* (Btuh) | AFUE (ICS) | Nominal Cooling Capacity | Gas Inlet (in.) | Volts/Hz/Phase | Max. Time Delay Breaker or Fuse | Nominal F.L.A. | Trans. (V.A.) | Approx. Shipping Weight (lbs.) |
|-------------------|----------------|--------------|----------------|------------|--------------------------|-----------------|----------------|---------------------------------|----------------|---------------|--------------------------------|
| Upflow/Horizontal | A80UH1D045A12 | 44,000 | 35,000 | 80.0% | 2 - 3 | 1/2 | 120-60-1 | 12 | 6.1 | 40 | 110 |
| | A80UH1D070A08 | 66,000 | 54,000 | 80.0% | 1.5 - 2 | 1/2 | 120-60-1 | 12 | 3.1 | 40 | 114 |
| | A80UH1D070A12 | 66,000 | 54,000 | 80.0% | 2 - 3 | 1/2 | 120-60-1 | 12 | 6.1 | 40 | 119 |
| | A80UH1D090B12 | 88,000 | 71,000 | 80.0% | 2 - 3 | 1/2 | 120-60-1 | 15 | 6.1 | 40 | 131 |
| | A80UH1D090B16 | 88,000 | 71,000 | 80.0% | 3 - 4 | 1/2 | 120-60-1 | 15 | 8.2 | 40 | 183 |
| | A80UH1D110C12 | 110,000 | 88,000 | 80.0% | 2 - 3 | 1/2 | 120-60-1 | 15 | 6.1 | 40 | 144 |
| | A80UH1D110C16 | 110,000 | 89,000 | 80.0% | 3 - 4 | 1/2 | 120-60-1 | 15 | 8.2 | 40 | 151 |
| | A80UH1D110C20 | 110,000 | 89,000 | 80.0% | 4 - 5 | 1/2 | 120-60-1 | 15 | 10 | 40 | 161 |
| | A80UH1D135D20 | 132,000 | 107,000 | 80.0% | 4 - 5 | 1/2 | 120-60-1 | 15 | 10 | 40 | 174 |
| | A80UH1D045A12L | 44,000 | 35,000 | 80.0% | 2 - 3 | 1/2 | 120-60-1 | 15 | 6.1 | 40 | 110 |
| | A80UH1D070A12L | 66,000 | 54,000 | 80.0% | 2 - 3 | 1/2 | 120-60-1 | 15 | 6.1 | 40 | 119 |
| | A80UH1D090B16L | 88,000 | 71,000 | 80.0% | 3 - 4 | 1/2 | 120-60-1 | 15 | 8.2 | 40 | 138 |
| A80UH1D110C20L | 110,000 | 89,000 | 80.0% | 4 - 5 | 1/2 | 120-60-1 | 15 | 10 | 40 | 161 | |
| Downflow | A80DF1D045A12 | 44,000 | 35,200 | 80.0% | 2 - 3 | 1/2 | 120-60-1 | 15 | 6.1 | 40 | 112 |
| | A80DF1D070A12 | 66,000 | 52,000 | 80.0% | 2 - 3 | 1/2 | 120-60-1 | 15 | 6.1 | 40 | 121 |
| | A80DF1D090B16 | 88,000 | 69,000 | 80.0% | 3 - 4 | 1/2 | 120-60-1 | 15 | 8.2 | 40 | 140 |
| | A80DF1D110C20 | 110,000 | 87,000 | 80.0% | 4 - 5 | 1/2 | 120-60-1 | 15 | 10 | 40 | 163 |

Note: For vent length and clearances to combustibles, please reference installation instructions.

BLOWER PERFORMANCE DATA

| Model | Motor Size (hp) | Blower Size | Temp. Rise (°F) | Blower Speed | CFM Heating CFM @ .10" - .80" w.c. | | | | | | | |
|------------------|-----------------|-------------|-----------------|--------------|------------------------------------|------|------|------|------|------|------|------|
| | | | | | .20 | .30 | .40 | .50 | .60 | .70 | .80 | .90 |
| A80UHID045A12(L) | 1/3 (4 spd) | 10 x 8 | 15 - 45 | High | 1571 | 1527 | 1472 | 1399 | 1329 | 1223 | 1137 | 1020 |
| | | | | Med/High | 1332 | 1314 | 1277 | 1233 | 1186 | 1136 | 1008 | 929 |
| | | | | Med | 1115 | 1139 | 1127 | 1086 | 1050 | 994 | 926 | 819 |
| | | | | Low | 950 | 952 | 944 | 924 | 887 | 842 | 783 | 648 |
| A80UHID070A08 | 1/5 (3 spd) | 10 x 7 | 40 - 70 | High | 1113 | 1086 | 1045 | 1014 | 964 | 891 | 811 | 713 |
| | | | | Med/High | 974 | 953 | 927 | 886 | 834 | 781 | 702 | 563 |
| | | | | Low | 822 | 791 | 775 | 733 | 702 | 637 | 562 | 422 |
| A80UHID070A12(L) | 1/3 (4 spd) | 10 x 8 | 30 - 60 | High | 1579 | 1522 | 1479 | 1402 | 1338 | 1247 | 1158 | 1047 |
| | | | | Med/High | 1357 | 1333 | 1300 | 1268 | 1205 | 1125 | 1045 | 942 |
| | | | | Med | 1137 | 1131 | 1102 | 1080 | 1037 | 977 | 913 | 828 |
| | | | | Low | 958 | 956 | 943 | 925 | 879 | 837 | 777 | 725 |
| A80UHID090B12 | 1/3 (4 spd) | 10 x 9 | 35 - 65 | High | 1724 | 1683 | 1631 | 1535 | 1469 | 1363 | 1257 | 1158 |
| | | | | Med/High | 1420 | 1410 | 1368 | 1314 | 1273 | 1183 | 1103 | 1002 |
| | | | | Med | 1171 | 1168 | 1150 | 1126 | 1084 | 1022 | 935 | 817 |
| | | | | Low | 973 | 978 | 957 | 927 | 908 | 840 | 784 | 680 |
| A80UHID090B16(L) | 1/2 (4 spd) | 10 x 10 | 30 - 60 | High | 1911 | 1840 | 1770 | 1663 | 1584 | 1469 | 1357 | 1198 |
| | | | | Med/High | 1738 | 1707 | 1634 | 1560 | 1468 | 1364 | 1232 | 1121 |
| | | | | Med | 1533 | 1502 | 1462 | 1408 | 1329 | 1262 | 1157 | 1019 |
| | | | | Low | 1303 | 1304 | 1281 | 1225 | 1192 | 1116 | 1018 | 918 |
| A80UHID110C12 | 1/3 (4 spd) | 10 x 10 | 45 - 75 | High | 1625 | 1605 | 1595 | 1550 | 1485 | 1385 | 1275 | 1040 |
| | | | | Med/High | 1300 | 1290 | 1305 | 1260 | 1225 | 1145 | 1010 | 875 |
| | | | | Med | 1045 | 1050 | 1045 | 1010 | 970 | 910 | 815 | 660 |
| | | | | Low | 880 | 880 | 830 | 835 | 800 | 730 | 635 | 535 |
| A80UHID110C16 | 1/2 (4 spd) | 10 x 10 | 30 - 60 | High | 2078 | 2017 | 1939 | 1848 | 1775 | 1679 | 1559 | 1425 |
| | | | | Med/High | 1791 | 1746 | 1693 | 1635 | 1573 | 1469 | 1349 | 1192 |
| | | | | Med | 1542 | 1547 | 1507 | 1472 | 1395 | 1322 | 1203 | 1060 |
| | | | | Low | 1334 | 1333 | 1321 | 1293 | 1237 | 1172 | 1050 | 909 |
| A80UHID110C20(L) | 3/4 (4 spd) | 11 x 10 | 30 - 60 | High | 2420 | 2304 | 2247 | 2156 | 2067 | 1988 | 1890 | 1742 |
| | | | | Med/High | 2230 | 2173 | 2113 | 2056 | 1985 | 1891 | 1764 | 1653 |
| | | | | Med | 1987 | 1954 | 1901 | 1841 | 1800 | 1703 | 1618 | 1491 |
| | | | | Low | 1796 | 1759 | 1715 | 1674 | 1616 | 1552 | 1465 | 1359 |
| A80UHID135D20 | 3/4 (4 spd) | 11 x 11 | 30 - 60 | High | 2120 | 2042 | 1972 | 1863 | 1747 | 1618 | 1488 | 1336 |
| | | | | Med/High | 2044 | 1948 | 1864 | 1790 | 1654 | 1563 | 1413 | 1312 |
| | | | | Med | 1886 | 1817 | 1762 | 1672 | 1603 | 1461 | 1357 | 1228 |
| | | | | Low | 1728 | 1664 | 1616 | 1526 | 1441 | 1366 | 1260 | 1136 |

Upflow / Horizontal

BLOWER PERFORMANCE DATA

| | Model | Motor Size (hp) | Blower Size | Temp. Rise (°F) | Blower Speed | CFM Heating CFM @ .10" - .80" w.c. | | | | | | | |
|----------|---------------|-----------------|-------------|-----------------|--------------|------------------------------------|------|------|------|------|------|------|------|
| | | | | | | .20 | .30 | .40 | .50 | .60 | .70 | .80 | .90 |
| | | | | | | | | | | | | | |
| Downflow | A80DFID045B12 | 1/3 (4 spd) | 10 x 8 | 15 - 45 | High | 1465 | 1414 | 1343 | 1255 | 1205 | 1140 | 1031 | 926 |
| | | | | | Med/High | 1351 | 1293 | 1236 | 1190 | 1106 | 1059 | 962 | 850 |
| | | | | | Med | 1129 | 1111 | 1083 | 1038 | 999 | 943 | 870 | 764 |
| | | | | | Low | 943 | 950 | 945 | 897 | 870 | 816 | 739 | 653 |
| | A80DFID070B12 | 1/3 (4 spd) | 11 x 8 | 25 - 55 | High | 1506 | 1459 | 1390 | 1306 | 1213 | 1140 | 1038 | 927 |
| | | | | | Med/High | 1355 | 1314 | 1264 | 1200 | 1129 | 1066 | 975 | 865 |
| | | | | | Med | 1149 | 1119 | 1082 | 1048 | 987 | 901 | 836 | 727 |
| | | | | | Low | 953 | 941 | 915 | 904 | 849 | 798 | 717 | 628 |
| | A80DFID090C16 | 1/2 (4 spd) | 10 x 10 | 25 - 55 | High | 1864 | 1779 | 1694 | 1596 | 1483 | 1340 | 1221 | 1065 |
| | | | | | Med/High | 1745 | 1676 | 1600 | 1502 | 1413 | 1273 | 1138 | 1007 |
| | | | | | Med | 1544 | 1496 | 1443 | 1363 | 1258 | 1148 | 1018 | 904 |
| | | | | | Low | 1321 | 1296 | 1265 | 1212 | 1148 | 1042 | 917 | 812 |
| | A80DFID110C20 | 3/4 (4 spd) | 11 x 10 | 30 - 60 | High | 2416 | 2328 | 2232 | 2149 | 2017 | 1920 | 1789 | 1657 |
| | | | | | Med/High | 2248 | 2193 | 2122 | 2048 | 1923 | 1825 | 1728 | 1594 |
| | | | | | Med | 2087 | 2021 | 1975 | 1905 | 1806 | 1727 | 1625 | 1487 |
| | | | | | Low | 1861 | 1812 | 1771 | 1728 | 1648 | 1560 | 1471 | 1351 |

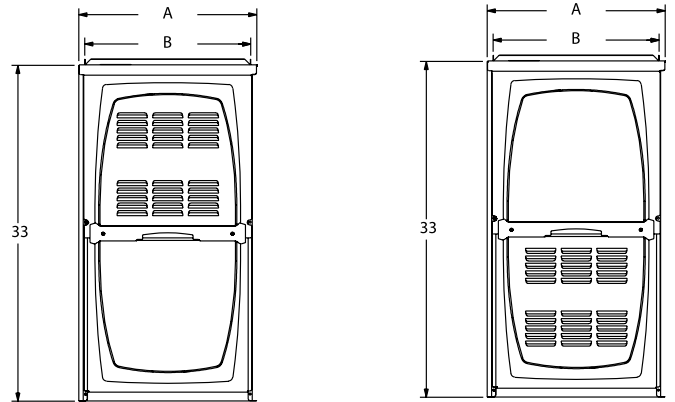
DIMENSIONS

| | Model | A | B | C | D |
|-------------------|------------------|--------|--------|--------|-------|
| Upflow/Horizontal | A80UH1D045A12(L) | 14-1/2 | 13-3/8 | 13 | 4-3/4 |
| | A80UH1D070A08 | 14-1/2 | 13-3/8 | 13 | 4-3/4 |
| | A80UH1D070A12(L) | 14-1/2 | 13-3/8 | 13 | 4-3/4 |
| | A80UH1D090B12 | 17-1/2 | 16-3/8 | 16 | 6-1/4 |
| | A80UH1D090B16(L) | 17-1/2 | 16-3/8 | 16 | 6-1/4 |
| | A80UH1D110C12 | 21 | 19-3/8 | 19-1/2 | 8 |
| | A80UH1D110C16 | 21 | 19-3/8 | 19-1/2 | 8 |
| | A80UH1D110C20(L) | 21 | 19-3/8 | 19-1/2 | 8 |
| | A80UH1D135D20 | 24-1/2 | 23-3/8 | 23 | 9-3/4 |
| Downflow | A80DF1D045 A12 | 14-1/2 | 13-3/8 | 13 | 4-3/4 |
| | A80DF1D070 A12 | 14-1/2 | 13-3/8 | 13 | 4-3/4 |
| | A80DF1D090 B16 | 17-1/2 | 16-3/8 | 16 | 6-1/4 |
| | A80DF1D110 C20 | 21 | 19-7/8 | 19-1/2 | 8 |

Front View

Upflow / Horizontal

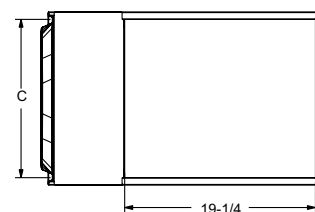
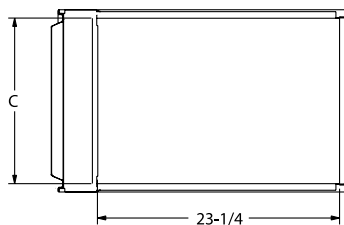
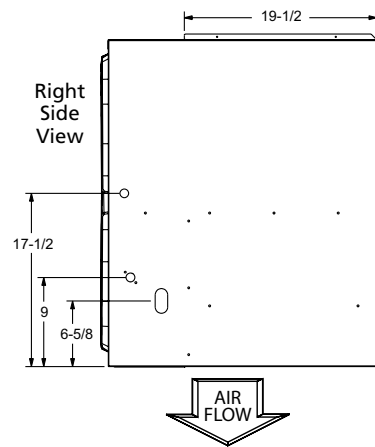
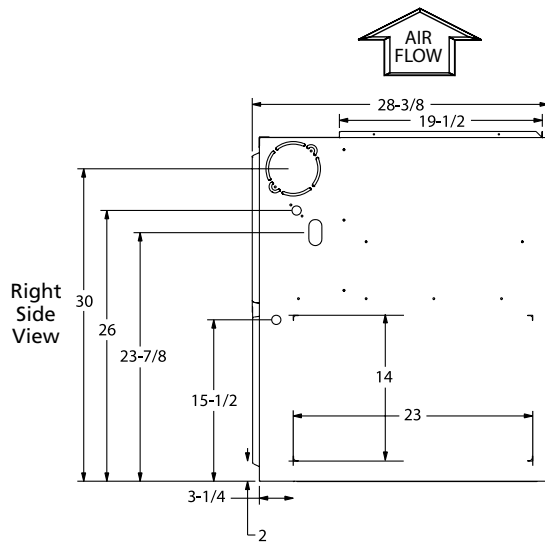
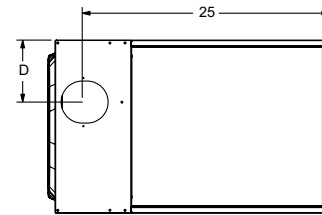
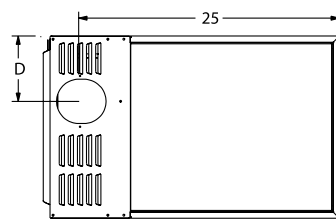
Downflow



Top View

Upflow / Horizontal

Downflow



Bottom View

Bottom View

ACCESSORY LIST

| Catalog Number | Description |
|------------------------------------|------------------------|
| External Filter Rack kits | |
| 1.841018 | 1 Pack (16x25) |
| 1.841039 | 10 Pack (16x25) |
| Natural to LP Kits | |
| 11K50 | 1-Stage - 80 |
| 11K45 | High Altitude (>7500') |
| Return Air Base | |
| 68W61 | 14.5", A Width |
| 68W62 | 17.5", B Width |
| 68W63 | 21.0", C Width |
| 68W64 | 24.5", D Width |
| Downflow Combustible Flooring Base | |
| 11M59 | 14.5", A Width |
| 11M60 | 17.5", B Width |
| 11M61 | 21.0", C Width |
| Night Service Kits | |
| 68W80 | Single Stage |
| Horizontal Suspension Kits | |
| 51W10 | 80 & 90% Kit |

Note: For vent length and clearances to combustibles, please reference installation instructions.



1-800-448-5872

All specifications and illustrations subject to change without notice and without incurring obligations.