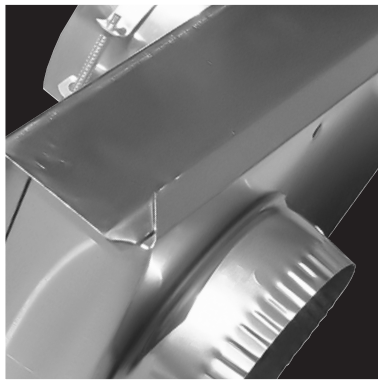


Catalog

2017



201 Broiles Drive
Jacksonville, TX 75766
Tel: 888-368-7233
Fax: 800-259-8368
buildersbest.com

inVenting Solutions



Growth since 1990

With over 200,000 square feet of manufacturing and distribution space, we are able to react very quickly to your needs.

Beginning with raw materials, our aluminum, plastic, and paperboard are specified and ordered often a year in advance. Turret presses, stamping, and duct forming create multiple lines to feed flexible assembly processes. Our plastics injection molding operation runs continually. On-site printing presses handle 75% of our packaging and point-of-purchase needs. These vertical integration enhancements help us manage inventory with extreme efficiency. We achieve these levels of integration via internal growth and outside acquisitions.



Whether it's for the dryer, bath, kitchen, or HVAC venting, we have the products and accessories in the right packaging to fit your space.

In 1990, we began installing clothes dryers with unique solutions, often imitated but never equalled. Twenty-five years and forty patents later, this family owned and operated company is the primary source for professional dryer venting in North America. We proudly manufacture in the U.S.A. at two manufacturing plants located in Texas and Florida. Strategic partners are helping us expanding our reach into Canada and beyond. As a vertically integrated company, we design, engineer, tool, manufacture, print and package in-house. From quick-ship to truckloads, you are our priority.

Builder's Best, Inc. • 201 Broiles Drive • Jacksonville, TX 75766



www.buildersbest.com • 1-800-368-7233

DUCT

SEMI RIGID

UL® AIR DUCT

V750 Universal Collars 4
V350-U Uncompressed 4
V250 Plain Ends 4
A100 Uncompressed 5
A100 Stretch-Fit™ 5
A300 Insulated Silver 5

NON-UL®

V330 PRO Crimped 6
V331 PRO Double Crimp 6
V230 PRO Plain Ends 6
V320 Crimped One End 7
V321 Double Crimp 7
V220 Plain Ends 7
V730 Double Female 7

RIGID

Galvanized Pipe & Elbow 8
V030 Aluminum 8
V020 Aluminum 8
V010 Aluminum 8
Long Sweep Elbow 8
Adjustable Elbow 8

FOIL & VINYL

Foil Duct 9
UL® Foil Kits 9
SilverDuct™ UL® 10
Indoor Lint Traps 10
Vinyl Hose 11
Bath Vent Kits 11
ClearDuct 11

VENT HOODS

WALL VENTS

GALVANIZED

GWM088 Heavy Duty 12
GWM271 P-Tanium™ 14
GWM271 Spangled 14

ALUMINUM

AWM088 Heavy Duty 13
AWM088 6" Spring 13
AWM271 Wide Mouth 15
ASM277 Standard Mouth 15
Rectangular 15

PLASTIC

SM Series 16
WC Series 16
J Block 16
PWM113 Wide Mouth 17
Pest Guards 17
PML282 Louvered 18

EAVE VENTS

ALUMINUM

AEV199 Eave Vents 19
AFL535 Micro Louver 19

PLASTIC

PFL812 Mini Louver 20
PEV802 Eave Vent 20
SV28 Soffit Vent 21
RDV Round Soffit 21
WG Diffusers 21

ROOF VENTS

GALVANIZED

GRV635 Black 24
GRV635 Spangled 24
Umbrella Cap 25
Creative Crown 25
Broad Band 25

ALUMINUM

ARV635 24

PLASTIC

RV28 26
RVL28 26
RV20 26

ACCESSORIES

Diffusers 21
Clamps 22
Aluminum Tailpipes 22
UL® Foil Tape 22
Draft Stopper 23
Heat Diverter 23
Aluminum Trim Plates 23
Incraser/Reducers 23
Couplings 23
Extension collar 28

Model Code

GWM088

G=Galvanized *Style= similar*
W=Wide *features*
M=Mouth

DRYER VENTING

ELBOWS

Close Elbow® 27
Wall Offset Elbow® 27
Dryer Offset Elbow® 27

SEMI RIGID

V830 Builder's Best® 28
V530 E-Z-Fasten™ 28
V430 Readi-Pipe™ 28

UL® SEMI RIGID

V450-TD UL® 29
V250-TD UL® 29

DRYER VENT KITS

UL® Dryer Vent Kits 30
SEK UL® 30
Close Loop™ 30
Over-the-Top® 30 & 31
Installer's Kit™ 30 & 31
Metal Kits with Elbows 31
Metal Kits with Hoods 31

PERISCOPES

Zero Periscope™ 32
18-29" 32
29-50" 32
Extension Pieces 32
Galvanized 29-74" 33
Aluminum 29-74" 33
Recessed Eave Vent 33
Transitions 34

DRYER OUTLET BOX

Dryer Outlet Box 34
8' & 10' Kits 34

UL® AIR DUCT

V750 AIR DUCT

- Universal male/female collar on each end
- 8' pieces compressed to 32"
- Factory installed universal male/female collars ensure uniform, air tight connections.
- UL® 181 label



| Diameter | Length | Part # | Qty | Package |
|----------|--------|--------|-----|----------|
| 5" | 8' | 110344 | 9 | bulk |
| 6" | 8' | 110345 | 4 | bulk |
| | 8' | 010346 | 9 | bulk |
| 7" | 8' | 110347 | 4 | bulk |
| 8" | 8' | 110348 | 4 | bulk |
| | 8' | 010349 | 9 | bulk |
| 9" | 8' | 110350 | 4 | bulk |
| 10" | 8' | 110351 | 4 | bulk |
| 12" | 8' | 010352 | 1 | ind. box |
| 14" | 8' | 010353 | 1 | ind. box |
| 16" | 8' | 010354 | 1 | ind. box |
| 18" | 8' | 010355 | 1 | ind. box |
| 20" | 8' | 010356 | 1 | ind. box |
| 22" | 8' | 010357 | 1 | ind. box |
| 24" | 8' | 010358 | 1 | ind. box |

V350-U AIR DUCT

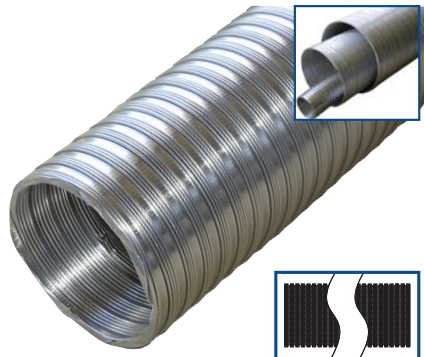
- 8' length
- One end crimped, one end plain
- Un-compressed
- UL® 181 label



| Diameter | Length | Part # | Qty | Package |
|----------|--------|--------|-----|----------|
| 3" | 8' | 110744 | 42 | bulk |
| 4" | 8' | 110745 | 25 | bulk |
| 5" | 8' | 110759 | 16 | bulk |
| 6" | 8' | 110760 | 12 | bulk |
| 7" | 8' | 110761 | 9 | bulk |
| 8" | 8' | 110762 | 6 | bulk |
| 9" | 8' | 110763 | 5 | bulk |
| 10" | 8' | 110764 | 4 | bulk |
| 12" | 8' | 110755 | 2 | ind. box |

V250 AIR DUCT

- 8' and 10' lengths
- Plain Ends
- Compressed
- UL® 181 label



| Diameter | Length | Part # | Qty | Package |
|----------|--------|--------|-----|---------|
| 3" | 8' | 110803 | 56 | bulk |
| | 10' | 110801 | 40 | bulk |
| 4" | 8' | 110804 | 30 | bulk |
| | 10' | 110802 | 24 | bulk |
| 5" | 8' | 110805 | 15 | bulk |
| | 10' | 110690 | 15 | bulk |
| 6" | 8' | 110806 | 12 | bulk |
| | 10' | 110691 | 12 | bulk |
| 7" | 8' | 110807 | 8 | bulk |
| | 10' | 110692 | 6 | bulk |
| 8" | 8' | 110808 | 6 | bulk |
| | 10' | 110693 | 6 | bulk |
| 9" | 8' | 110809 | 5 | bulk |
| 10" | 8' | 110810 | 4 | bulk |



Builder's Best purchased Metalflex® of Atlanta Georgia in 2005.
This is the strongest duct we make.

UL® AIR DUCT

MODEL A 100 AIR DUCT

- Uncompressed full 8' lengths
- Uninsulated
- Factory crimp on one end
- UL® 181 label.



| Diameter | Part # | Qty | Package |
|----------|--------|-----|----------|
| 3" | 111253 | 42 | bulk |
| 4" | 111254 | 25 | bulk |
| 5" | 111255 | 16 | bulk |
| 6" | 111256 | 12 | bulk |
| 7" | 111257 | 9 | bulk |
| 8" | 111258 | 6 | bulk |
| 9" | 111259 | 5 | bulk |
| 10" | 111260 | 4 | bulk |
| 12" | 111261 | 4 | bulk |
| 14" | 111262 | 4 | bulk |
| 16" | 011263 | 1 | ind. box |
| 18" | 011264 | 1 | ind. box |
| 20" | 011265 | 1 | ind. box |
| 24" | 011266 | 1 | ind. box |

MODEL A 100 STRETCH-FIT™ AIR DUCT

- 8' lengths compressed to 29"
- Uninsulated
- Factory crimp on one end
- UL® 181 label.



| Diameter | Part # | Qty | Package |
|----------|--------|-----|---------|
| 3" | 111356 | 12 | bulk |
| 4" | 111357 | 8 | bulk |
| 5" | 111358 | 5 | bulk |
| 6" | 111270 | 8 | bulk |
| 7" | 111271 | 6 | bulk |
| 8" | 111272 | 4 | bulk |
| 9" | 111273 | 4 | bulk |
| 10" | 111274 | 3 | bulk |

MODEL A 300 SILVER

- Uncompressed 8' lengths
- Factory crimp on one end
- Insulated - R4, R6, R8
- Outer jacket is silver "metalized" with scrim mylar vapor barrier.
- UL® 181 label



R4

| Diameter | Part # | Qty | Package |
|----------|--------|-----|----------|
| 4" | 111307 | 12 | bulk |
| 5" | 111308 | 9 | bulk |
| 6" | 111309 | 8 | bulk |
| 7" | 111310 | 5 | bulk |
| 8" | 111311 | 4 | bulk |
| 9" | 111312 | 4 | bulk |
| 10" | 111313 | 4 | bulk |
| 12" | 111314 | 4 | bulk |
| 14" | 111315 | 3 | bulk |
| 16" | 011316 | 1 | ind. box |
| 18" | 011317 | 1 | ind. box |
| 20" | 011318 | 1 | ind. box |
| 24" | 011319 | 1 | ind. box |

R6

| Diameter | Part # | Qty | Package |
|----------|--------|-----|----------|
| 3" | 111320 | 16 | bulk |
| 4" | 111321 | 12 | bulk |
| 5" | 111322 | 9 | bulk |
| 6" | 111323 | 6 | bulk |
| 7" | 111324 | 4 | bulk |
| 8" | 111325 | 4 | bulk |
| 9" | 111326 | 4 | bulk |
| 10" | 111327 | 4 | bulk |
| 12" | 111328 | 3 | bulk |
| 14" | 111329 | 2 | bulk |
| 16" | 011330 | 1 | ind. box |
| 18" | 011331 | 1 | ind. box |
| 20" | 011332 | 1 | ind. box |
| 24" | 011333 | 1 | ind. box |

R8

| Diameter | Part # | Qty | Package |
|----------|--------|-----|----------|
| 3" | 111661 | 16 | bulk |
| 4" | 111662 | 12 | bulk |
| 5" | 111663 | 9 | bulk |
| 6" | 111664 | 6 | bulk |
| 7" | 111665 | 4 | bulk |
| 8" | 111666 | 4 | bulk |
| 9" | 111667 | 4 | bulk |
| 10" | 111668 | 4 | bulk |
| 12" | 111669 | 3 | bulk |
| 14" | 111670 | 2 | bulk |
| 16" | 011671 | 1 | ind. box |
| 18" | 011672 | 1 | ind. box |
| 20" | 011673 | 1 | ind. box |
| 24" | 011674 | 1 | ind. box |

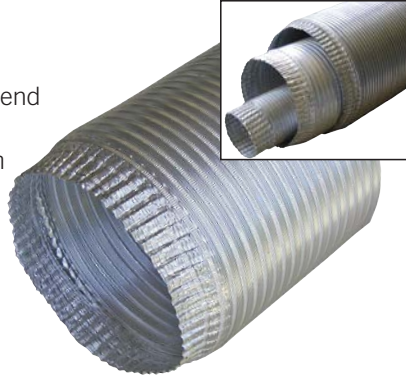
Builder's Best® purchased Thermofin® of Florida in 2007.
Model A has a core of A100 flexible aluminum duct wrapped in fiberglass insulation.



SEMI-RIGID ALUMINUM DUCT

V330

- One crimped end and one plain end
- Non-insulated general purpose venting duct for low and medium operating pressures.
- Non-combustible corrugated aluminum with water-tight continuous lockseams.
- Class 0 metal duct.



| Diameter | Length | Part # | Qty | Package |
|----------|--------|--------|-----|---------|
| 3" | 8' | 011489 | 20 | bulk |
| 4" | 8' | 011491 | 12 | bulk |
| 5" | 8' | 011493 | 6 | bulk |
| 6" | 8' | 110317 | 4 | bulk |
| 7" | 8' | 110319 | 4 | bulk |
| 8" | 8' | 110320 | 4 | bulk |
| 9" | 8' | 110322 | 4 | bulk |
| 10" | 8' | 110323 | 4 | bulk |
| 12" | 8' | 110246 | 4 | bulk |

V331

- Same as V330 but with a Double Crimp on one end.

| Diameter | Length | Part # | Qty | Package |
|----------|--------|--------|-----|---------|
| 3" | 8' | 011450 | 20 | bulk |
| 4" | 8' | 011452 | 12 | bulk |

V230

- Same as V330, but with Plain ends



| Diameter | Length | Part # | Qty | Package |
|----------|--------|--------|-----|---------|
| 3" | 8' | 110250 | 20 | bulk |
| | 10' | 110251 | 20 | bulk |
| | 20' | 110401 | 25 | bulk |
| | 25' | 110252 | 25 | bulk |
| 4" | 8' | 110087 | 12 | bulk |
| | 10' | 110253 | 12 | bulk |
| | 20' | 110402 | 16 | bulk |
| 5" | 8' | 110315 | 16 | bulk |
| | 10' | 011476 | 6 | bulk |
| | 20' | 110256 | 9 | bulk |
| 6" | 8' | 110257 | 9 | bulk |
| | 10' | 011479 | 4 | bulk |
| | 20' | 110259 | 12 | bulk |
| 7" | 8' | 110260 | 6 | bulk |
| | 10' | 110262 | 8 | bulk |
| | 20' | 110263 | 4 | bulk |
| 8" | 8' | 110264 | 4 | bulk |
| | 10' | 011487 | 6 | bulk |
| | 20' | 110266 | 4 | bulk |
| 9" | 8' | 110267 | 4 | bulk |
| | 10' | 110268 | 4 | bulk |
| | 20' | 110269 | 4 | bulk |
| 10" | 8' | 110383 | 4 | bulk |
| | 10' | 110384 | 4 | bulk |
| | 20' | 110385 | 4 | bulk |
| 12" | 8' | 110247 | 4 | bulk |
| 14" | 8' | 110248 | 2 | bulk |

With two steel screw clamps:

| | | | | |
|-----------|-----------|---------------|-----------|--------------------|
| 4" | 8' | 110460 | 12 | Display Bag |
|-----------|-----------|---------------|-----------|--------------------|



The Builder's Best® PRO versions are heavier and stronger.

Parts in Red indicate Display Packaging.

SEMI-RIGID ALUMINUM DUCT

V320

- One crimped end and one plain end
- Non-insulated general purpose venting duct for low and medium operating pressures.
- Non-combustible corrugated aluminum with water-tight continuous lockseams.
- Class 0 metal duct.



| Diameter | Length | Part # | Qty | Package | UPC |
|----------|--------|--------|-----|-------------|-----|
| 3" | 8' | 110443 | 10 | Display Bag | • |
| | 8' | 011458 | 20 | bulk | |
| 4" | 8' | 110444 | 12 | Display Bag | • |
| | 8' | 110434 | 12 | bulk | |
| | 20' | 110439 | 16 | bulk | |
| 5" | 8' | 110445 | 6 | Display Bag | • |
| | 8' | 110435 | 6 | bulk | |
| 6" | 8' | 011463 | 4 | Display Bag | • |
| | 8' | 010431 | 4 | bulk | |
| 7" | 8' | 011465 | 4 | Display Bag | • |
| | 8' | 011466 | 4 | bulk | |
| 8" | 8' | 011468 | 4 | Display Bag | • |
| | 8' | 011469 | 4 | bulk | |

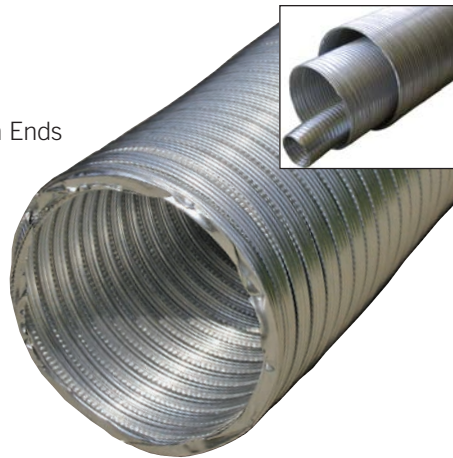
V321

- Same as V320 but with a Double Crimp on one end.

| Diameter | Length | Part # | Qty | Package |
|----------|--------|--------|-----|---------|
| 3" | 8' | 011471 | 20 | bulk |
| 4" | 8' | 110584 | 12 | bulk |
| 5" | 8' | 110585 | 6 | bulk |
| 6" | 8' | 011473 | 4 | bulk |
| 7" | 8' | 011474 | 4 | bulk |
| 8" | 8' | 011475 | 4 | bulk |

V220

- Same as V320 but with Plain Ends



| Diameter | Length | Part # | Qty | Package | UPC |
|----------|------------------------------|--------|-----|-------------|-----|
| 3" | 8' | 110453 | 10 | Display Bag | • |
| | 8' | 111583 | 10 | Display Tag | • |
| 4" | 8' | 011436 | 20 | bulk | |
| | 10' | 110413 | 20 | bulk | |
| | 20' | 110420 | 25 | bulk | |
| | 25' | 110421 | 25 | bulk | |
| | 5' | 110400 | 15 | bulk | |
| 4" | 8' | 110454 | 12 | Display Bag | • |
| | 8' | 111584 | 12 | Display Tag | • |
| | 8' | 110404 | 12 | bulk | |
| | 10' | 110414 | 12 | bulk | |
| | 20' | 110429 | 16 | bulk | |
| 5" | 25' | 110419 | 16 | bulk | |
| | 8' | 111585 | 6 | Display Tag | • |
| | 8' | 110405 | 6 | bulk | |
| | 10' | 011440 | 9 | bulk | |
| | 20' | 110425 | 9 | bulk | |
| 6" | 8' | 111586 | 4 | Display Tag | • |
| | 8' | 011441 | 4 | bulk | |
| | 10' | 110416 | 12 | bulk | |
| 7" | 20' | 011443 | 6 | bulk | |
| | 8' | 111587 | 4 | Display Tag | • |
| | 8' | 011444 | 4 | bulk | |
| 8" | 10' | 110417 | 8 | bulk | |
| | 8' | 111588 | 4 | Display Tag | • |
| | 8' | 011447 | 4 | bulk | |
| 8" | 10' | 110418 | 6 | bulk | |
| | With two steel screw clamps: | | | | |
| 4" | 8' | 110459 | 12 | Display Bag | • |

V730 "DOUBLE FEMALE"



- 8' length
- Aluminum female collars overlap for smooth taped seams.



| Diameter | Length | BB Part # | Qty | Package | |
|------------------------------|--------|-----------|-----|---------|--|
| 3" | 8' | 011454 | 20 | bulk | |
| 4" | 8' | 011456 | 12 | bulk | |
| With two steel screw clamps: | | | | | |
| 3" | 8' | 011501 | 20 | bulk | |
| 4" | 8' | 011502 | 12 | bulk | |

RIGID PIPE & ELBOWS

GALVANIZED PIPE



30 gauge galvanized



| Diameter | Length | Part # | Qty | Package |
|----------|--------|--------|-----|---------|
| 3" | 2' | 110185 | 25 | bulk |
| 4" | 2' | 110182 | 25 | bulk |
| 4" | 5' | 111002 | 15 | bulk |

V030 RIGID ALUMINUM PIPE



26 gauge aluminum
(V030 is heavier than V020)



| Diameter | Length | Part # | Qty | Package | UPC |
|----------|--------|--------|-----|---------|-----|
| 3" | 2' | 110640 | 25 | bulk | • |
| | 5' | 110641 | 15 | bulk | |
| 4" | 2' | 110642 | 25 | bulk | • |
| | 5' | 110643 | 15 | bulk | |

V020 RIGID ALUMINUM PIPE

Lighter weight than PRO V030

| Diameter | Length | Part # | Qty | Package | UPC |
|----------|--------|--------|-----|---------|-----|
| 3" | 2' | 110636 | 25 | bulk | • |
| | 5' | 110637 | 15 | bulk | |
| 4" | 2' | 110638 | 25 | bulk | • |
| | 5' | 110639 | 12 | bulk | • |

V010 RIGID ALUMINUM PIPE

Lightest weight Rigid Pipe

| Diameter | Length | Part # | Qty | Package |
|----------|--------|--------|-----|---------|
| 3" | 2' | 110644 | 25 | bulk |
| 4" | 2' | 110645 | 25 | bulk |

GALVANIZED ELBOW



- 30 gauge galvanized
- Turns 90° within 6"
 - 4-piece sectional adjustability
 - One crimped end



| Diameter | Part # | Qty | Package |
|----------|--------|-----|-----------------|
| 3" | 110184 | 12 | bulk |
| | 010186 | 900 | skid (75 cases) |
| 4" | 110181 | 12 | bulk |
| | 010187 | 660 | skid (55 cases) |

ALUMINUM ELBOW

- 26 Gauge
- Turns 90° within 6"
 - One crimped end
 - 4-piece sectional adjustability



| Diameter | Part # | Qty | Package | UPC |
|----------|--------|-----|---------|-----|
| 3" | 110543 | 12 | bulk | • |
| 4" | 110544 | 12 | bulk | • |

LONG SWEEP ELBOW

- Measures the same as straight pipe
- Overcomes length of run issues for some building codes.
- 4-piece sectional adjustability



| Diameter | Material | Part # | Qty | Package |
|----------|----------|--------|-----|---------|
| 4" | aluminum | 111646 | 12 | bulk |



The Builder's Best® PRO versions are heavier and stronger.

FOIL DUCT AND KITS

FOIL DUCT

UL® 181, Class 1 air connector label

- Multi-ply design of metalized polyester and aluminum/polyester laminate
- Steel wire support
- 3" dia. has 3/4" pitch
- 4–12" dia. has 1" pitch
- UL® sticker every 10 feet
- Maximum velocity rating 5000 fpm



| Diameter | Length | Part # | Qty | Package | UPC |
|------------------------------|------------|---------------|---------------|--------------------|----------------------|
| 3" | 8' | 110218 | 12 | bulk | |
| | 25' | 110201 | 4 | bulk | |
| | 25' | 110825 | 16 | bag | |
| 25' | 110221 | 5 | ind. box | • | |
| | 110215 | 4 | ind. box | • | |
| 4" | 5' | 110219 | 12 | bulk | |
| | 5' | 110223 | 12 | Display Box | • |
| | 8' | 110224 | 12 | Display Box | • |
| | 8' | 110220 | 12 | bulk | |
| | 8' | 010242 | 36 | bulk | |
| | 25' | 110202 | 4 | bulk | |
| | 25' | 110826 | 16 | Bag | |
| | 25' | 110222 | 5 | ind. box | • |
| | 50' | 110216 | 4 | ind. box | • |
| | 50' | 110244 | 4 | Display Box | • |
| 5" | 25' | 010203 | 1 | ind. box | • |
| 6" | 25' | 010204 | 1 | ind. box | • |
| 7" | 25' | 010205 | 1 | ind. box | • |
| 8" | 25' | 010206 | 1 | ind. box | • |
| 9" | 25' | 010207 | 1 | ind. box | • |
| 10" | 25' | 010208 | 1 | ind. box | • |
| 12" | 25' | 010210 | 1 | ind. box | • |
| With two spring clamps: | | | | | |
| 4" | 8' | 110680 | 12 | Bag | • |
| With two steel screw clamps: | | | | | |
| | 4" | 5' | 110660 | 12 | Display Bag • |
| | | 8' | 110661 | 12 | Display Bag • |

FOIL DUCT WALL VENT KITS

| Hose | Hood | Clamps | Part # | Qty | Package | UPC |
|--------------------------|---|-------------------|---------------|----------|--------------------|----------|
| 4" x 5' Foil Duct | White wide mouth plastic | 2 ZipTorq™ | 110620 | 4 | ind. box | • |
| 4" x 8' Foil Duct | White wide mouth plastic | 2 ZipTorq™ | 110618 | 4 | ind. box | • |
| 4" x 8' Foil Duct | Standard aluminum | 2 ZipTorq™ | 110533 | 4 | ind. box | • |
| 4" x 5' Foil Duct | Standard aluminum | 2 ZipTorq™ | 110603 | 4 | ind. box | • |
| 4" x 5' Foil Duct | Brown louver plastic | 2 ZipTorq™ | 110611 | 4 | ind. box | • |
| 4" x 5' Foil Duct | White louver plastic | 2 ZipTorq™ | 110612 | 4 | ind. box | • |
| 4" x 8' Foil Duct | Brown louver plastic | 2 ZipTorq™ | 110609 | 4 | ind. box | • |
| 4" x 8' Foil Duct | White louver plastic | 2 ZipTorq™ | 110610 | 4 | ind. box | • |
| 4" x 8' Foil Duct | White louver hood/Incraser/Reducer | 2 ZipTorq™ | 111520 | 6 | Display Box | • |

FOIL DUCT ROOF VENT KITS

| Hose | Hood | Clamps | Part # | Qty | Package | UPC |
|--------------------------|--|-------------------|---------------|----------|-----------------|----------|
| 4" x 8' Foil Duct | 4-5" Plastic Roof Cap/Incraser/Reducer | 2 ZipTorq™ | 011885 | 1 | ind. box | • |
| 4" x 8' Foil Duct | 4" Black Metal Roof Cap/Incraser/Reduce | 2 ZipTorq™ | 012640 | 1 | ind. box | • |



Part #110533



Part #111520



Part #011885

The Builder's Best® PRO versions are heavier and stronger.



Parts in Red indicate Display Packaging.

SILVERDUCT™ AND KITS

SILVERDUCT™

- UL® listed and labeled as foil dryer transition duct.
- Steel wire support, multi-ply design of aluminum and polyester



| Diameter | Length | Part # | Qty | Package | UPC |
|---------------------------------|-----------|---------------|-----------|--------------------|----------|
| 4" | 5' | 110504 | 12 | bulk | |
| | 5' | 010507 | 72 | bulk | |
| | 5' | 110676 | 6 | Display Box | • |
| | 8' | 110505 | 12 | bulk | |
| | 8' | 010508 | 54 | bulk | |
| | 8' | 110677 | 6 | Display Box | • |
| | 8' | 010793 | 20 | Display Box | • |
| With two spring tension clamps: | | | | | |
| 4" | 5' | 110670 | 12 | bag | • |
| | 8' | 110671 | 12 | bag | • |
| With two Zip Torq™ clamps: | | | | | |
| 4" | 5' | 110672 | 12 | Display Box | • |
| | 8' | 110673 | 12 | Display Box | • |

LONG LENGTH SILVERDUCT™

* This product is constructed to meet UL® 2158A transition duct for clothes dryers.

* There is no UL® label. UL® specifies clothes dryer transition duct venting can only be 8 foot in length.

| Diameter | Length | Part # | Qty | Package | UPC |
|-----------|------------|---------------|----------|--------------------|----------|
| 4" | 20' | 111506 | 6 | Display Box | • |
| | 25' | 111504 | 5 | ind. box | • |
| | 50' | 111505 | 4 | ind. box | • |

SILVERDUCT™ DRYER VENT KITS

- 5' and 8' duct is UL® listed and labeled as clothes dryer transition duct.
- Some hoods require assembly
- Louvered hoods and Wide Mouth Plastic hoods have 10" tails

| Hose | Hood | Clamps | Part # | Qty | Package | UPC |
|----------------------------|------------------------------------|------------------|---------------|----------|--------------------|----------|
| 4" x 5' SilverDuct™ | White louvered | 2 ZipTorq | 111406 | 6 | Display Box | • |
| 4" x 8' SilverDuct™ | White louvered | 2 ZipTorq | 111407 | 6 | Display Box | • |
| 4" x 8' SilverDuct™ | White wide mouth bird guard | 2 ZipTorq | 111408 | 8 | Display Box | • |
| 4" x 8' SilverDuct™ | Brown wide mouth bird guard | 2 ZipTorq | 111528 | 8 | Display Box | • |

INDOOR LINT TRAP KITS

Use to vent ELECTRIC (not gas) dryers indoors. Note: We recommend venting dryers to the outside if at all possible.



| Description | Clamps | Part # | Qty | Package | UPC |
|----------------------------|-----------------|---------------|----------|--------------------|----------|
| Bucket only | | 110496 | 48 | bulk | |
| | | 110646 | 9 | Display Box | • |
| Kits include Bucket and: | | | | | |
| 4" x 5' SilverDuct™ | 2 spring | 110597 | 9 | Display Box | • |
| 5' V220 Flexible pipe | 2 steel | 110497 | 3 | ind. box | • |



SilverDuct™ UL® 2158A clothes dryer transition duct provides flame resistance. However, it crushes easily behind the dryer and is held together with layers of aluminum foil and polyester plastic.

Clothes dryer manufacturers may limit the use of plastics in venting. Check the dryer warranty and installation instructions as well as your local building codes for appropriate use.

Parts in Red indicate Display Packaging.

VINYL DUCT AND KITS

PRO VINYL HOSE



Thickest Vinyl on the Market.

- steel wire support
- 1" pitch

- * Useful as bathroom fan venting.
- * Not approved for dryer venting.



| Diameter | Length | Part # | Qty | Package | UPC |
|---------------------------|-----------|---------------|-----------|----------------------|----------|
| 3" | 5' | 110046 | 12 | bulk | |
| | 8' | 111534 | 12 | Display Label | • |
| | 8' | 110047 | 12 | bulk | |
| 4" | 20' | 110048 | 5 | ind. box | • |
| | 50' | 110053 | 4 | ind. box | • |
| | 8' | 110052 | 12 | Display Label | • |
| | 8' | 110112 | 12 | bulk | |
| | 20' | 110059 | 5 | ind. box | • |
| | 50' | 110062 | 4 | ind. box | • |
| With two ZipTorq™ clamps: | | | | | |
| 4" | 8' | 110653 | 12 | Display Bag | • |

STANDARD VINYL HOSE

Steel wire support

- 3¼" and 3" diameter are 1" pitch
- 4" diameter is 1½" pitch

- * Useful as bathroom fan venting.
- * Not approved for dryer venting.
- * Check your local codes.



| Diameter | Length | Part # | Qty | Package | UPC |
|----------|--------|--------|-----|----------|-----|
| 3" | 5' | 110562 | 12 | bulk | |
| | 8' | 110563 | 12 | bulk | |
| | 8' | 010558 | 90 | bulk | |
| | 20' | 110753 | 28 | bulk | |
| | 20' | 110564 | 5 | ind. box | • |
| 3¼" | 50' | 110565 | 4 | ind. box | • |
| | 20' | 110054 | 28 | bulk | |
| | 50' | 110055 | 4 | ind. box | • |
| 4" | 5' | 110566 | 12 | bulk | |
| | 8' | 110567 | 12 | bulk | |
| | 8' | 010559 | 72 | bulk | |
| | 20' | 110568 | 5 | ind. box | • |
| | 50' | 110569 | 4 | ind. box | • |
| | 50' | 010743 | 144 | skid | |

VINYL BATH VENT KITS

For installations which do not require UL® labels, these basic vinyl vent kits meet that need. Vinyl is not suitable for clothes dryer venting.

| Hose | Hood | Clamps | Part # | Qty | Package | UPC |
|----------------------|---|------------------|---------------|----------|--------------------|----------|
| 4" x 8' Vinyl | Wide mouth aluminum | 2 ZipTorq | 111522 | 8 | Display Box | • |
| 4" x 8' Vinyl | Brown louvered plastic | 2 ZipTorq | 111510 | 6 | Display Box | • |
| 4" x 8' Vinyl | White louvered plastic | 2 ZipTorq | 111511 | 6 | Display Box | • |
| 4" x 8' Vinyl | White wide mouth plastic with bird guard | 2 ZipTorq | 111517 | 8 | Display Box | • |



Part #111522



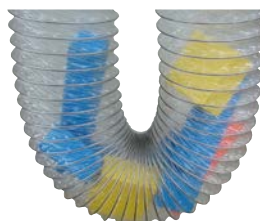
Part #111511



Part #111517

CLEARDUCT™

- Thick PVC (poly-vinyl-chloride) flexible duct
- Durable steel wire supported construction resists crushing and air leakage.



| Diameter | Length | Part # | Qty | Package | UPC |
|-----------|-----------|---------------|-----------|--------------------|----------|
| 4" | 8' | 100017 | 12 | Display Box | • |
| | 25' | 110487 | 9 | bulk | |
| | 50' | 110509 | 4 | ind. box | • |

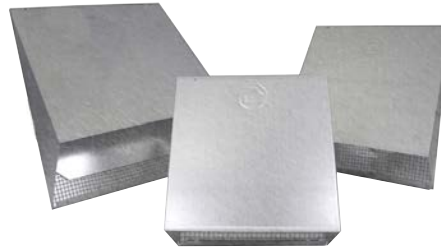
WALL VENTS - GALVANIZED

GWM088 HEAVY GAUGE HOODS

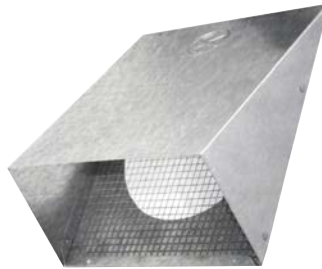
- 26 Gauge Galvanized
- Riveted, not caulked
- Mouth opening exceeds pipe area
- 4 mounting holes for secure connections

Available:

- With and without backdraft flapper
- With and without 1/4" x 1/4" screens mechanically inserted and removable
- No tailpipe, with 6" tailpipe or with 11" tailpipe.



PN 111125



PN 111219



PN 111027

FLAPPER

| Diameter | Tail | Part # | Qty |
|----------|------|--------|-----|
| 4" | n/a | 111201 | 20 |
| | 6" | 111125 | 12 |
| | 11" | 011136 | 12 |
| 5" | n/a | 111203 | 12 |
| | 6" | 111127 | 12 |
| | 11" | 111137 | 6 |
| 6" | n/a | 111205 | 12 |
| | 6" | 111129 | 12 |
| | 11" | 111139 | 6 |
| 7" | n/a | 111207 | 12 |
| | 6" | 111131 | 10 |
| | 11" | 111141 | 6 |
| 8" | n/a | 111209 | 12 |
| | 6" | 111132 | 10 |
| | 11" | 111142 | 6 |
| 10" | n/a | 111211 | 2 |
| | 6" | 111133 | 2 |
| | 11" | 011143 | 1 |
| 12" | n/a | 111213 | 2 |
| | 6" | 111134 | 2 |
| | 11" | 011144 | 1 |

SCREEN

| Diameter | Tail | Part # | Qty |
|----------|------|--------|-----|
| 4" | n/a | 111215 | 20 |
| | 6" | 111076 | 12 |
| | 11" | 011088 | 12 |
| 5" | n/a | 111217 | 12 |
| | 6" | 111078 | 12 |
| | 11" | 111089 | 6 |
| 6" | n/a | 111219 | 12 |
| | 6" | 111080 | 12 |
| | 11" | 111091 | 6 |
| 7" | n/a | 111221 | 12 |
| | 6" | 111081 | 10 |
| | 11" | 111093 | 6 |
| 8" | n/a | 111223 | 12 |
| | 6" | 111082 | 10 |
| | 11" | 111094 | 6 |
| 10" | n/a | 111225 | 2 |
| | 6" | 111083 | 2 |
| | 11" | 011095 | 1 |
| 12" | n/a | 111227 | 2 |
| | 6" | 111084 | 2 |
| | 11" | 011096 | 1 |

FLAPPER & SCREEN

| Diameter | Tail | Part # | Qty |
|----------|------|--------|-----|
| 4" | n/a | 111229 | 20 |
| | 6" | 111033 | 12 |
| | 11" | 011023 | 12 |
| 5" | n/a | 111231 | 12 |
| | 6" | 111035 | 12 |
| | 11" | 111024 | 6 |
| 6" | n/a | 111233 | 12 |
| | 11" | 111037 | 12 |
| | n/a | 111026 | 6 |
| 7" | n/a | 111235 | 12 |
| | 6" | 111038 | 10 |
| | 11" | 111027 | 6 |
| 8" | n/a | 111237 | 12 |
| | 6" | 111039 | 10 |
| | 11" | 111028 | 6 |
| 10" | n/a | 111239 | 2 |
| | 6" | 111040 | 2 |
| | 11" | 011029 | 1 |
| 12" | n/a | 111241 | 2 |
| | 6" | 111041 | 2 |
| | 11" | 011030 | 1 |



The Builder's Best® PRO versions are heavier and stronger.

WALL VENTS - ALUMINUM

AWM088 HEAVY GAUGE HOODS

- 26 Gauge Aluminum
- Riveted, not caulked
- Mouth opening exceeds pipe area
- 4 mounting holes for secure connections

Available:

- With and without backdraft flapper
- With and without 1/4" x 1/4" screens mechanically inserted and removable
- No tailpipe, with 6" tailpipe or with 11" tailpipe.



PN 111159



PN 111056



PN 111060

FLAPPER

| Diameter | Tail | Part # | Qty |
|----------|------|--------|-----|
| 4" | n/a | 111159 | 20 |
| 6" | | 111145 | 12 |
| 11" | | 011148 | 12 |
| 5" | n/a | 111161 | 12 |
| 6" | | 111066 | 12 |
| 11" | | 111097 | 6 |
| 6" | n/a | 111163 | 12 |
| 6" | | 111068 | 12 |
| 11" | | 111099 | 6 |
| 7" | n/a | 111165 | 12 |
| 6" | | 111070 | 10 |
| 11" | | 111101 | 6 |
| 8" | n/a | 111167 | 12 |
| 6" | | 111071 | 10 |
| 11" | | 111102 | 6 |
| 10" | n/a | 111169 | 2 |
| 6" | | 111072 | 2 |
| 11" | | 011103 | 1 |
| 12" | n/a | 111171 | 2 |
| 6" | | 111073 | 2 |
| 11" | | 011104 | 1 |

SCREEN

| Diameter | Tail | Part # | Qty |
|----------|------|--------|-----|
| 4" | n/a | 111173 | 20 |
| 6" | | 111115 | 12 |
| 11" | | 011106 | 12 |
| 5" | n/a | 111175 | 12 |
| 6" | | 111117 | 12 |
| 11" | | 111107 | 6 |
| 6" | n/a | 111177 | 12 |
| 6" | | 111119 | 12 |
| 11" | | 111109 | 6 |
| 7" | n/a | 111179 | 12 |
| 6" | | 111121 | 10 |
| 11" | | 111111 | 6 |
| 8" | n/a | 111181 | 12 |
| 6" | | 111122 | 10 |
| 11" | | 111112 | 6 |
| 10" | n/a | 111183 | 2 |
| 6" | | 111123 | 2 |
| 11" | | 011113 | 1 |
| 12" | n/a | 111185 | 2 |
| 6" | | 111124 | 2 |
| 11" | | 011114 | 1 |

FLAPPER & SCREEN

| Diameter | Tail | Part # | Qty |
|----------|------|--------|-----|
| 4" | n/a | 111187 | 20 |
| 6" | | 111056 | 12 |
| 11" | | 011046 | 12 |
| 5" | n/a | 111189 | 12 |
| 6" | | 111058 | 12 |
| 11" | | 111047 | 6 |
| 6" | n/a | 111191 | 12 |
| 6" | | 111060 | 12 |
| 11" | | 111049 | 6 |
| 7" | n/a | 111193 | 12 |
| 6" | | 111062 | 10 |
| 11" | | 111050 | 6 |
| 8" | n/a | 111195 | 12 |
| 6" | | 111063 | 10 |
| 11" | | 111051 | 6 |
| 10" | n/a | 111197 | 2 |
| 6" | | 111064 | 2 |
| 11" | | 011052 | 1 |
| 12" | n/a | 111199 | 2 |
| 6" | | 111065 | 2 |
| 11" | | 011053 | 1 |

AWM088 6" HOOD WITH SPRING LOADED DAMPER

- Aluminum
- Back draft spring-loaded damper



| Diameter | Tail | Part # | Qty | Package | UPC |
|-----------------|--------|--------|-----|----------|-----|
| 6" | 6" | 111387 | 12 | bulk | |
| 6" | | 011641 | 1 | ind. box | • |
| 6" | 2 3/4" | 111906 | 8 | bulk | |
| Faceplate only: | | | | | |
| 6" | n/a | 111811 | 12 | bulk | |

WALL VENTS - GALVANIZED

GWM271 P-TANIUM™ WIDE MOUTH HOOD

- Ships gray, ready to paint
- 1 1/2" tailpipe
- Back-draft flapper

Paintable galvanized finish ships as gray, but accepts standard house paint.



PN 110889



PN 111157

| Diameter | Part # | Qty | Package | UPC |
|----------|--------|-----|---------|-----|
|----------|--------|-----|---------|-----|

Wide Mouth:

| | | | | |
|-----------|---------------|----------|---------------------|----------|
| 3" | 110887 | 12 | bulk | • |
| 4" | 110648 | 6 | Display Tray | • |
| | 111430 | 8 | Display Card | • |
| | 110889 | 12 | bulk | |

Wide Mouth with flapper, screen and tail:

| | | | | |
|----|--------|----|------|--|
| 4" | 110891 | 12 | bulk | |
|----|--------|----|------|--|

Hood only, no tailpipe:

Wide Mouth:

| | | | | |
|----|--------|----|------|--|
| 4" | 111157 | 24 | bulk | |
|----|--------|----|------|--|

P-Tanium™ Trim Plates

| | | | | |
|----|--------|-----|------|--|
| 3" | 110056 | 100 | bulk | |
| 4" | 110057 | 100 | bulk | |

GSM277 P-TANIUM™ STANDARD MOUTH HOOD

- Ships gray, ready to paint
- 1 1/2" tailpipe
- Back-draft flapper



PN 110885

| Diameter | Part # | Qty | Package | UPC |
|----------|--------|-----|---------|-----|
|----------|--------|-----|---------|-----|

Standard Mouth:

| | | | | |
|----|--------|----|----------|---|
| 3" | 110883 | 12 | bulk | |
| 4" | 110885 | 12 | bulk | • |
| | 110750 | 4 | ind. box | • |

Hood only, no tailpipe:

Standard Mouth:

| | | | | |
|----|--------|----|------|--|
| 4" | 111419 | 24 | bulk | |
|----|--------|----|------|--|

GSM277 P-TANIUM™ AIR INTAKE

- Intakes do not have flappers
- Grid is metal 1/4" x 1/4"
- 1 1/2" Tailpipe
- P-Tanium™ paintable galvanized finish

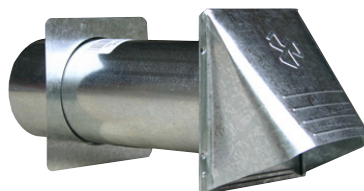


| Diameter | Part # | Qty | Package | UPC |
|----------|--------|-----|---------|-----|
|----------|--------|-----|---------|-----|

| | | | | |
|----|--------|----|------|--|
| 4" | 110729 | 12 | bulk | |
|----|--------|----|------|--|

GWM271 SPANGLED WIDE MOUTH HOOD

- 1 1/2" tailpipe
- Back-draft flapper



PN 110771

| Diameter | Part # | Qty | Package | UPC |
|----------|--------|-----|---------|-----|
|----------|--------|-----|---------|-----|

Wide mouth:

| | | | | |
|----|--------|----|------|--|
| 3" | 110770 | 12 | bulk | |
| 4" | 110771 | 12 | bulk | |

No tail wide mouth:

| | | | | |
|----|--------|----|------|--|
| 4" | 110699 | 24 | bulk | |
|----|--------|----|------|--|

GSM277 SPANGLED STANDARD MOUTH HOOD

- 1 1/2" tailpipe
- Back-draft flapper

| Diameter | Part # | Qty | Package | UPC |
|----------|--------|-----|---------|-----|
|----------|--------|-----|---------|-----|

Standard mouth:

| | | | | |
|----|--------|----|------|--|
| 4" | 110732 | 12 | bulk | |
|----|--------|----|------|--|



The Builder's Best® PRO versions are heavier and stronger.

Parts in Red indicate Display Packaging.

WALL VENTS - ALUMINUM

AWM271 WIDE MOUTH HOOD

- 1 1/2" tailpipe
- Back plate
- Back-draft flapper
- Fully assembled, riveted tailpipe

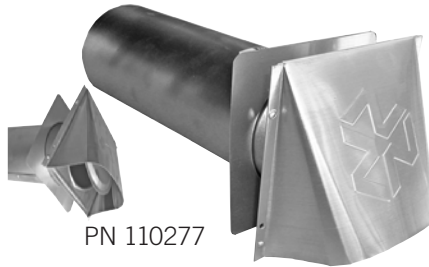


PN 110271

| Diameter | Part # | Qty | Package | UPC |
|--|---------------|----------|---------------------|----------|
| 3" | 110270 | 12 | bulk | • |
| 3" | 110328 | 4 | ind. box | • |
| 4" | 110170 | 6 | Display Tray | • |
| | 110271 | 12 | bulk | • |
| | 110326 | 4 | ind. box | • |
| With 4" tailpipe: | | | | |
| 4" | 110791 | 18 | bulk | |
| Faceplate only: | | | | |
| 4" | 110557 | 24 | bulk | |
| Faceplate with Flapper and Screen (no tailpipe): | | | | |
| 4" | 110786 | 24 | bulk | |
| With tail, flapper and screen: | | | | |
| 4" | 110684 | 12 | bulk | |

ASM277 STANDARD MOUTH HOOD

- 1 1/2" tailpipe
- Back plate
- Back-draft flapper
- Fully assembled, riveted tailpipe



PN 110277

| Standard Mouth: | | | | |
|-----------------|--------|----|----------|---|
| 3" | 110276 | 12 | bulk | • |
| | 110278 | 4 | ind. box | • |
| 4" | 110277 | 12 | bulk | • |
| | 110279 | 4 | ind. box | • |

ARR929 RECTANGULAR HOODS

- 3 1/4" x 10" long rectangular tail
- Back draft spring-loaded
- Foam damper seals for quiet closure



| Tail | Color | Part # | Qty | Package | UPC |
|------------------|-------|--------|-----|---------|-----|
| Aluminum ARR929: | | | | | |
| 5" | | 111929 | 14 | bulk | • |
| 11" | | 111377 | 8 | bulk | • |
| Primex WC: | | | | | |
| 1 1/4" | Gray | 111872 | 6 | bulk | |
| 1 1/4" | White | 111873 | 6 | bulk | |

WC310 primex

- UV Stabilized polymer resin
- 3 1/4" x 10" x 1 1/4" long rectangular tail
- Removable damper for intake or exhaust
- 1/2" x 1/2" molded grid
- Drip edge on flanged base to help drain away water

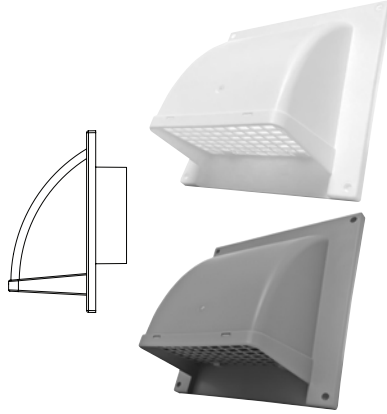


Parts in Red indicate Display Packaging.

WALL VENTS - PLASTIC

SM primex[®] SIDE WALL CAP

- UV-stabilized durable polymer resin
- One-piece, seamless design helps eliminate leaky joints while maximizing water protection
- Spring loaded damper reduces noise caused by wind
- Removable screen



| Diameter | Part # | Qty | Package | color | UPC |
|----------|--------|-----|-------------|-------|-----|
| 4" | 112291 | 24 | bulk | white | |
| 5" | 112292 | 10 | bulk | white | |
| 6" | 112293 | 10 | bulk | white | |
| 6" | 012303 | 1 | Display Box | white | • |
| 4" | 112294 | 24 | bulk | gray | |
| 5" | 112295 | 10 | bulk | gray | |
| 6" | 012287 | 1 | Display Box | gray | • |
| 6" | 112296 | 10 | bulk | gray | |
| 4" | 112297 | 24 | bulk | brown | |
| 5" | 112298 | 10 | bulk | brown | |
| 6" | 112299 | 10 | bulk | brown | |

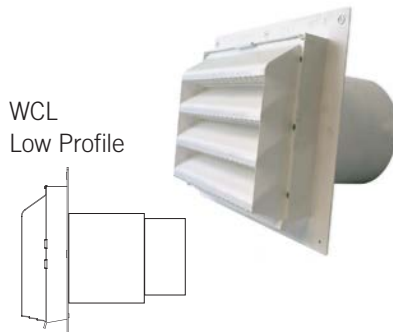
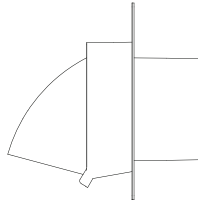
WC & WCL primex[®] WALL CAPS

- UV stabilized polymer resin
- Drip edge on flanged base helps drain away water
- Removable damper
- ½" x ½" molded grid
- Intake or Exhaust

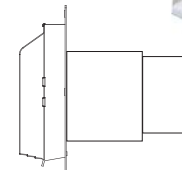
* Other colors available upon request. Lead times will vary.



WC
Regular Profile



WCL
Low Profile



| Diameter | Part # | Qty | Package |
|--------------------|--------|-----|---------|
| WC Regular Profile | | | |
| White: | | | |
| 4" | 111775 | 4 | bulk |
| 5" | 111776 | 4 | bulk |
| 6" | 111777 | 4 | bulk |
| 7" | 111778 | 2 | bulk |
| Gray: | | | |
| 4" | 111781 | 4 | bulk |
| 5" | 111782 | 4 | bulk |
| 6" | 111783 | 4 | bulk |
| 7" | 111784 | 2 | bulk |
| Brown: | | | |
| 4" | 111833 | 4 | bulk |
| 5" | 112073 | 4 | bulk |
| 6" | 111835 | 4 | bulk |
| 7" | 112080 | 2 | bulk |

| Diameter | Part # | Qty | Package |
|-----------------------------|--------|-----|---------|
| WCL Low Profile - Louvered: | | | |
| White: | | | |
| 7" or 8" | 111867 | 4 | bulk |
| Gray: | | | |
| 7" or 8" | 111752 | 4 | bulk |

J-BLOCK VENT HOOD

- Plastic hood for brick, siding & stucco applications
- Weighted design helps prevent wind noise and animal entry.
- 11" tailpipe included
- 7.5" wide by 8.5" tall face
- Made in Canada

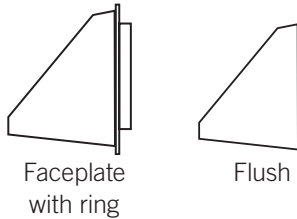


| Diameter | Color | Part # | Qty | Package |
|--|-------|--------|-----|---------|
| With 11" Tailpipe: | | | | |
| Reversible trim ring adjusts from 0 to ½": | | | | |
| 4" | White | 111705 | 12 | bulk |
| | Brown | 111712 | 12 | bulk |
| Reversible trim ring adjusts from ½" to 1.15": | | | | |
| 4" | White | 111706 | 12 | bulk |
| | Brown | 111713 | 12 | bulk |
| Faceplates only: | | | | |
| Reversible trim ring adjusts from 0 to ½": | | | | |
| 4" | White | 111714 | 12 | bulk |
| | Brown | 111715 | 12 | bulk |
| Reversible trim ring adjusts from ½" to 1.15": | | | | |
| 4" | White | 111716 | 12 | bulk |
| | Brown | 111717 | 12 | bulk |

WALL VENTS - PLASTIC WIDE MOUTH

PWM113 WIDE MOUTH HOOD

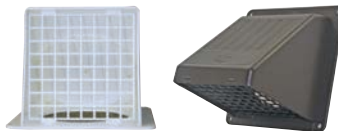
- 11" fully assembled, riveted tailpipe
- Aluminum trim plate
- Back-draft flapper
- Wide mouth plastic hood



| Diameter | Color | Part # | Qty | Package | UPC |
|---|-------|---------------|----------|---------------------|----------|
| 3" | White | 111243 | 8 | bulk | • |
| | Brown | 111378 | 8 | bulk | • |
| 4" | White | 010179 | 6 | Display Tray | • |
| | White | 110164 | 8 | Display Card | • |
| | White | 110113 | 8 | bulk | • |
| | White | 110330 | 4 | ind. box | • |
| | Brown | 110410 | 8 | Display Card | • |
| | Brown | 110177 | 6 | Display Tray | • |
| | Brown | 110284 | 8 | bulk | • |
| | Brown | 110332 | 4 | ind. box | • |
| Faceplate with ring: | | | | | |
| 3" | White | 111373 | 8 | bulk | |
| | Brown | 111374 | 8 | bulk | |
| 4" | White | 110119 | 8 | bulk | |
| | White | 010723 | 336 | skid (gaylord) | |
| | Brown | 110285 | 8 | bulk | |
| | Brown | 010724 | 336 | skid (gaylord) | |
| Faceplate for flush installation (no ring): | | | | | |
| 4" | White | 110766 | 8 | bulk | |
| | White | 010768 | 392 | skid (gaylord) | |
| | Brown | 110767 | 8 | bulk | |
| | Brown | 010769 | 392 | skid (gaylord) | |

PWM113 BIRD GUARD HOOD

- 11" fully assembled, riveted tailpipe
- Aluminum trim plate
- Back-draft flapper
- Wide mouth plastic hood
- ½" x ½" pest grid
- Snaps in and removable for cleaning.



* This hood is not recommended for dryer venting, but if so used, check screen frequently for lint build-up.

| Diameter | Color | Part # | Qty | Package | UPC |
|---|-------|---------------|----------|---------------------|----------|
| 3" | White | 111365 | 8 | bulk | |
| | Brown | 111368 | 8 | bulk | |
| 4" | White | 111381 | 8 | bulk | |
| | White | 111411 | 6 | Display Tray | • |
| | Brown | 111384 | 8 | bulk | |
| Faceplate with ring: | | | | | |
| 3" | White | 111375 | 8 | bulk | |
| | Brown | 111376 | 8 | bulk | |
| 4" | White | 111732 | 8 | bulk | |
| | Brown | 111733 | 8 | bulk | |
| Faceplate for flush installation (no ring): | | | | | |
| 4" | White | 111391 | 8 | bulk | |
| | Brown | 111392 | 8 | bulk | |

PEST GUARD

- Universal cap fits over most thru wall vent hoods
- Hinge action allows for easy cleaning.
- This product is made in Canada.



| Color | Part # | Qty | Package | UPC |
|---|---------------|-----------|----------------------|-----|
| Fits over most 4" diameter through wall hoods | | | | |
| White | 111572 | 12 | bulk | |
| | 111573 | 12 | Display Label | |

Parts in Red indicate Display Packaging.

WALL VENTS - PLASTIC LOUVERED

PML282 LOUVERED PLASTIC HOOD WITHOUT TAILPIPE

- Screens are 1/4" x 1/4" molded grid
- Hoods with screens are not recommended for dryer venting.



snap-on connecting ring

SNAP ON RING

| Diameter | Color | Part # | Qty | Package |
|----------|--------------|---------------|-----------|---------------------|
| 3" | White | 110749 | 12 | bulk |
| | Brown | 110872 | 12 | bulk |
| 4" | White | 111424 | 12 | Display Card |
| | | 110286 | 12 | bulk |
| 4" | Brown | 111545 | 12 | Display Card |
| | | 110287 | 12 | bulk |
| 5" | White | 110830 | 12 | bulk |
| | Brown | 110834 | 12 | bulk |
| 6" | White | 110838 | 12 | bulk |
| | Brown | 110842 | 12 | bulk |
| 7" | White | 110846 | 12 | bulk |
| | Brown | 110850 | 12 | bulk |
| 8" | White | 110854 | 12 | bulk |
| | Brown | 110858 | 12 | bulk |

RING WITH SCREEN

| Diameter | Color | Part # | Qty | Package |
|----------|-------|--------|-----|---------|
| 3" | White | 110340 | 12 | bulk |
| | Brown | 110342 | 12 | bulk |
| 4" | White | 110288 | 12 | bulk |
| | Brown | 110292 | 12 | bulk |
| 5" | White | 110831 | 12 | bulk |
| | Brown | 110835 | 12 | bulk |
| 6" | White | 110839 | 12 | bulk |
| | Brown | 110843 | 12 | bulk |
| 7" | White | 110847 | 12 | bulk |
| | Brown | 110851 | 12 | bulk |
| 8" | White | 110855 | 12 | bulk |
| | Brown | 110859 | 12 | bulk |



flush



with screen

FLUSH

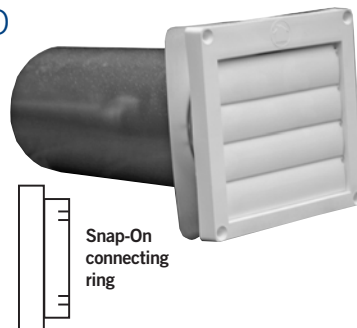
| Diameter | Color | Part # | Qty | Package |
|----------|-------|--------|-----|---------|
| 3" | White | 111149 | 24 | bulk |
| | Brown | 111151 | 24 | bulk |
| 4" | White | 111153 | 24 | bulk |
| | Brown | 111155 | 24 | bulk |
| 5" | White | 110832 | 12 | bulk |
| | Brown | 110836 | 12 | bulk |
| 6" | White | 110840 | 12 | bulk |
| | Brown | 110844 | 12 | bulk |
| 7" | White | 110848 | 12 | bulk |
| | Brown | 110852 | 12 | bulk |
| 8" | White | 110856 | 12 | bulk |
| | Brown | 110860 | 12 | bulk |

FLUSH WITH SCREEN

| Diameter | Color | Part # | Qty | Package |
|----------|-------|--------|-----|---------|
| 4" | White | 110291 | 24 | bulk |
| | Brown | 110294 | 24 | bulk |
| 5" | White | 110833 | 12 | bulk |
| | Brown | 110837 | 12 | bulk |
| 6" | White | 110841 | 12 | bulk |
| | Brown | 110845 | 12 | bulk |
| 7" | White | 110849 | 12 | bulk |
| | Brown | 110853 | 12 | bulk |
| 8" | White | 110857 | 12 | bulk |
| | Brown | 110861 | 12 | bulk |

PML282 LOUVERED PLASTIC HOOD WITH TAILPIPE

- 11" tailpipe
- Aluminum trim plate
- Fully assembled
- Faceplate has 4 louvers



Snap-On connecting ring

| Diameter | Color | Part # | Qty | Package | UPC |
|---------------------|--------------|---------------|-----------|---------------------|----------|
| 3" | White | 110280 | 12 | bulk | |
| | White | 110334 | 4 | ind. box | • |
| | Brown | 110281 | 12 | bulk | |
| 4" | White | 111412 | 12 | Display Card | • |
| | White | 110282 | 12 | bulk | • |
| | White | 110336 | 4 | ind. box | • |
| 4" | Brown | 111414 | 12 | Display Card | • |
| | Brown | 110283 | 12 | bulk | • |
| | Brown | 110338 | 4 | ind. box | • |
| Unassembled: | | | | | |
| 4" | White | 111692 | 12 | bulk | |
| | Brown | 111734 | 12 | bulk | |
| Louver replacements | | | | | |
| 4" | White | 110003 | 100 | bulk | |
| | Brown | 110004 | 100 | bulk | |

EAVE VENTS - ALUMINUM

AEV199

FRESH AIR INTAKE

- Aluminum construction
- Intakes do not have flappers, meeting IBC.
- Grid is metal 1/4" x 1/4" , with 1/4" round holes
- Female snap-lock collar



| Diameter | Part # | Qty | Package |
|-------------------|--------|-----|---------|
| Fresh air intake: | | | |
| 4" | 110189 | 8 | bulk |

AEV199

SCREENED EXHAUST

- Back draft flapper
- Aluminum construction
- Grid is metal 1/4" x 1/4" , with 1/4" round holes



| Diameter | Part # | Qty | Package |
|---|--------|-----|---------|
| Exhaust with flapper and female snap-lock™ fitting: | | | |
| 4" | 110188 | 8 | bulk |
| Exhaust with flapper and male snap-lock™ fitting: | | | |
| 4" | 110199 | 8 | bulk |

AEV199

DRYER EAVE VENT

NO SCREEN

- 4" collar
- Back draft flapper
- No screen per IBC building codes
- Installs flush with eave



| Description | Part # | Qty | Package | UPC |
|--------------------------------|---------------|----------|---------------------|----------|
| Female snap-lock collar | 110166 | 8 | Display Card | • |
| | 110139 | 8 | bulk | |
| Male crimped collar | 110200 | 8 | bulk | |

* Good for clothes dryer venting.

AFL535

MICRO LOUVER EAVE VENT

- Aluminum
- Fixed louvered screen
- Installs flush

* This versatile eave vent is good for bathroom fan venting or fresh air intakes. Formerly the "Pro-Vent™ Eave Vent".



| Diameter | Part # | Qty | Package |
|--|--------|-----|---------|
| Faceplate only: | | | |
| 3" | 110272 | 20 | bulk |
| 4" | 110273 | 20 | bulk |
| With 3 ft V230 flexible aluminum pipe: | | | |
| 3" | 110274 | 16 | bulk |
| 4" | 110275 | 16 | bulk |
| With 3" collar: | | | |
| 3" | 110556 | 8 | bulk |
| 4" | 110555 | 8 | bulk |

Parts in Red indicate Display Packaging.

EAVE VENTS - PLASTIC

PFL812 MINI LOUVER

- Polypropylene molded plastic
- Screens are ¼" x ¼" molded grid
- Fixed louvers
- 4 mounting holes
- Works for thru-wall as well as eave venting



PN 110681



PN 110812

FLUSH MOUNT

| Diameter | Color | Part # | Qty |
|----------|-------|--------|-----|
| 3" | White | 110975 | 12 |
| | Brown | 110976 | 12 |
| 4" | White | 110751 | 12 |
| | Brown | 110752 | 12 |
| 5" | White | 110896 | 12 |
| | Brown | 111005 | 12 |
| 6" | White | 110900 | 12 |
| | Brown | 111503 | 12 |
| 7" | White | 110904 | 12 |
| | Brown | 111013 | 12 |
| 8" | White | 110908 | 12 |
| | Brown | 111017 | 12 |



flush

FLUSH WITH SCREEN

| Diameter | Color | Part # | Qty |
|----------|-------|--------|-----|
| 5" | White | 110897 | 12 |
| | Brown | 111006 | 12 |
| 6" | White | 110901 | 12 |
| | Brown | 111010 | 12 |
| 7" | White | 110905 | 12 |
| | Brown | 111014 | 12 |
| 8" | White | 110909 | 12 |
| | Brown | 111018 | 12 |

WITH 3" TAIL

| Diameter | Color | Part # | Qty |
|----------|-------|--------|-----|
| 3" | White | 110695 | 12 |
| | Brown | 110681 | 12 |
| 4" | White | 110812 | 12 |
| | Brown | 110519 | 12 |

WITH 4" TAIL

| Diameter | Color | Part # | Qty |
|----------|-------|--------|-----|
| 6" | White | 111918 | 4 |

WITH 10" TAIL

| Diameter | Color | Part # | Qty |
|----------|-------|--------|-----|
| 3" | White | 110893 | 12 |
| | Brown | 110683 | 12 |
| 4" | White | 110813 | 12 |
| | Brown | 110971 | 12 |

SNAP ON RING

| Diameter | Color | Part # | Qty |
|----------|-------|--------|-----|
| 3" | White | 110694 | 12 |
| | Brown | 110682 | 12 |
| 4" | White | 110811 | 12 |
| | Brown | 110972 | 12 |
| 5" | White | 110894 | 12 |
| | Brown | 111003 | 12 |
| 6" | White | 110898 | 12 |
| | Brown | 111007 | 12 |
| 7" | White | 110902 | 12 |
| | Brown | 111011 | 12 |
| 8" | White | 110906 | 12 |
| | Brown | 111015 | 12 |



snap-on
connecting ring

RING & SCREEN

| Diameter | Color | Part # | Qty |
|----------|-------|--------|-----|
| 4" | White | 110754 | 12 |
| | Brown | 110974 | 12 |
| 5" | White | 110895 | 12 |
| | Brown | 111004 | 12 |
| 6" | White | 110899 | 12 |
| | Brown | 111008 | 12 |
| 7" | White | 110903 | 12 |
| | Brown | 111012 | 12 |
| 8" | White | 110907 | 12 |
| | Brown | 111016 | 12 |



PN 111249

WITH 3' FLEX TAIL

| Diameter | Color | Part # | Qty |
|----------|-------|--------|-----|
| 3" | White | 111251 | 12 |
| | Brown | 110977 | 12 |
| 4" | White | 111249 | 12 |
| | Brown | 110973 | 12 |

PEV802 - EXHAUST

- Polypropylene molded plastic
- Pre-drilled mounting holes
- Back draft flapper
- Locking ring connection on back
- Available with ¾" connecting ring OR 3" long aluminum tail
- Can be used for bathroom fan or dryer vent

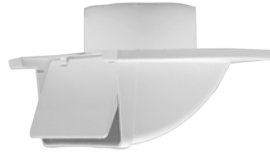


| Diameter | Color | Part # | Qty | Package | UPC |
|-----------------------------|-------|--------|-----|---------|-----|
| With ¾" connecting ring: | | | | | |
| 3" | White | 111830 | 12 | bulk | |
| | Brown | 111831 | 12 | bulk | |
| 4" | White | 111802 | 12 | bulk | |
| | Brown | 111803 | 12 | bulk | |
| With 3" long aluminum tail: | | | | | |
| 3" | White | 111806 | 12 | bulk | |
| | Brown | 111807 | 12 | bulk | |
| 4" | White | 111804 | 12 | bulk | • |
| | Brown | 111805 | 12 | bulk | • |

EAVE VENTS - PLASTIC

SV EXHAUST primex

- One piece design
- No leaky seams
- Made from UV stabilized polymer resin
- Back draft flapper



| Diameter | Color | Part # | Qty | Package |
|----------|-------|--------|-----|---------|
| 4" | White | 111858 | 12 | bulk |
| 5" | White | 111859 | 12 | bulk |
| 6" | White | 112251 | 10 | bulk |

SV28 EXHAUST primex

- One piece design
- No leaky seams
- Made from UV stabilized polymer resin
- Back draft flapper



PN 111941
shown with optional adapter PG 26

| Diameter | Color | Part # | Qty | Package |
|------------------------------------|-------|--------|-----|----------------|
| 4"-8" Flush (adapters on page 26): | | | | |
| 4"-8" | White | 111941 | 6 | bulk screen |
| 4"-8" | White | 111942 | 6 | bulk no screen |

RDV primex

- Extra long collar for better duct connection
- Molded in mesh screen
- UV Stabilized polymer resin
- Secure friction fit



| Diameter | Color | Part # | Qty | Package | UPC |
|----------|-------|--------|-----|---------|-----|
| 2" | White | 111852 | 50 | bulk | • |
| 4" | White | 111869 | 16 | bulk | • |
| 5" | White | 111870 | 50 | bulk | • |
| 6" | White | 111871 | 12 | bulk | • |

CEILING DIFFUSERS

WG primex

ADJUSTABLE DIFFUSERS

- Dual flow for intake or exhaust
- Stainless steel grip "clip" for snug fit
- Foam gasket allows for tight seal on uneven surfaces
- Lock nut included to adjust air flow



| Diameter | Part # | Qty | Package |
|----------|--------|-----|---------|
| 4" | 111862 | 12 | bulk |
| 5" | 111864 | 12 | bulk |
| 6" | 111865 | 8 | bulk |

WGX primex

ADJUSTABLE DIFFUSERS

- Dual flow for intake or exhaust
- Adjustment screw to set airflow
- Secure friction fit
- Trim ring snaps over flange and hides mounting screws



| Diameter | Part # | Qty | Package |
|----------|--------|-----|---------|
| 4" | 111896 | 25 | bulk |
| 6" | 111898 | 25 | bulk |
| 8" | 111900 | 15 | bulk |

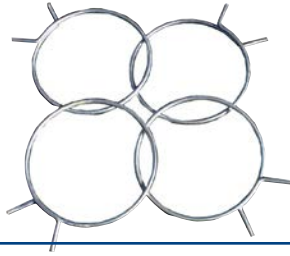
Builder's Best is an Authorized Primex Distribution Partner.
Primex is Made in Canada.



ACCESSORIES

STEEL TENSION CLAMPS

- "Spring" clamps
- No tools required



| Diameter | Part # | Qty | Package | UPC |
|-----------|---------------|-----------|---------------------|-----|
| 3" | 110480 | 100 | bulk | |
| 4" | 111551 | 25 | Display Card | |
| | 110482 | 100 | bulk | |

WORM GEAR CLAMPS

- Galvanized
- Plated steel band, housing and screw



| Diameter | Part # | Qty | Package | UPC |
|----------|---------------|-----------|---------------------|-----|
| 3" | 111908 | 100 | bulk | |
| 4" | 111909 | 100 | bulk | |
| | 111546 | 25 | Display Card | • |
| 6" | 111911 | 40 | bulk | |

STEEL SCREW CLAMPS

- 1½" Phillips/hex head steel screw
- 4" Minimum I.D. 3.90", Max 4¼"
- Designed to resist stretching.



| Diameter | Part # | Qty | Package | UPC |
|-------------------------------------|---------------|-----------|---------------------|-----|
| 3" | 110065 | 100 | bulk | |
| 4" | 110074 | 25 | Display Card | • |
| | 110071 | 100 | bulk | |
| 6" | 111417 | 40 | bulk | |
| 2" screw (provides larger diameter) | | | | |
| 4" | 110075 | 100 | bulk | |

* 110074 display is 2 clamps per card, 25 cards per case.

ZIP TORQ™ CLAMPS

- Unique polymeric stretch plastic
- Tightens without tools
- Loosens with #2 phillips screwdriver



| Diameter | Part # | Qty | Package | UPC |
|----------|--------|-----|---------|-----|
| 3"-4" | 112145 | 100 | bulk | |

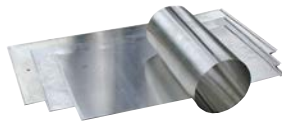
PLASTIC RATCHET CLAMPS

- Releasable Cable Tie
- Press tab, release and reuse.



| Diameter | Part # | Qty | Package | UPC |
|--------------|---------------|-----------|---------------------|-----|
| 3"-4" | 111423 | 25 | Display Card | • |

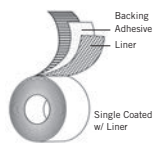
11" ALUMINUM TAILPIPES



| Diameter | Part # | Qty | Package | UPC |
|----------|--------|-----|---------|-----|
| 3" | 110866 | 24 | bulk | |
| 4" | 110867 | 24 | bulk | |
| 5" | 110862 | 24 | bulk | |
| 6" | 110863 | 24 | bulk | |
| 7" | 110864 | 24 | bulk | |
| 8" | 110865 | 24 | bulk | |

FOIL TAPE

- Aluminum foil printed backing
- Acrylic adhesive
- Paper liner
- Aluminum color
- Used to seal connections



| Description | Part # | Qty | Package |
|-----------------|--------|-----|---------|
| 2.5" x 60 yards | 111704 | 16 | bulk |

Parts in Red indicate Display Packaging.

ACCESSORIES

DRAFT STOPPER

- Helps prevent cold air from entering home through clothes dryer by inserting between clothes dryer duct and wall pipe.



| Diameter | Part # | Qty | Package | UPC |
|----------|--------|-----|---------|-----|
| 4" | 111577 | 6 | bulk | |

DRYER HEAT DIVERTER

- * Manual control directs heat into home in cold weather or outside in warm weather.



| Diameter | Part # | Qty | Package | UPC |
|----------|--------|-----|---------|-----|
| 4" | 111575 | 6 | bulk | |

ALUMINUM TRIM PLATES



| Diameter | Part # | Qty | Package | UPC |
|----------|--------|-----|---------|-----|
| 3" | 110126 | 100 | bulk | |
| 4" | 110122 | 100 | bulk | |

WINDOW PLATE

- 12" high by 18" wide Aluminum



| Description | Part # | Qty | Package | UPC |
|-------------|--------|-----|---------|-----|
| 3" opening | 110494 | 25 | bulk | |
| 4" opening | 110495 | 25 | bulk | |

INCREASER & REDUCER

- Connect ducts of different diameters.



Part #110493 Part # 110492

| Description | Part # | Qty | Package | UPC |
|-----------------------------|--------|-----|---------|-----|
| Aluminum increaser 3" to 4" | 110493 | 12 | bulk | • |
| Aluminum reducer 4" to 3" | 110492 | 12 | bulk | • |



Part # 110290

| Description | Part # | Qty | Package | UPC |
|---------------------------------|--------|-----|---------|-----|
| Plastic increaser/reducer 3"/4" | 110290 | 10 | bulk | • |

DUCT COUPLING

- Aluminum coupling to connect pieces of pipe.



Part #110490, #110491 & #111536 Part #110137

| Description | Diameter | Length | Part # | Qty | Package | UPC |
|----------------------------------|----------|--------|--------|-----|---------|-----|
| Crimped both ends: | | | | | | |
| Aluminum | 3" | 3" | 110490 | 12 | bulk | • |
| | 4" | 3" | 110491 | 12 | bulk | • |
| | 6" | 3" | 111536 | 6 | bulk | • |
| One end crimped, one end beaded: | | | | | | |
| Aluminum | 4" | 3" | 110137 | 25 | bulk | |

DUCT COUPLING



- Galvanized coupling
- Connect pieces of pipe



Part #111690

| Description | Diameter | Length | Part # | Qty | Package | UPC |
|-------------|----------|--------|--------|-----|---------|-----|
| Galvanized | 3" | 4" | 111689 | 16 | bulk | |
| | 4" | 4" | 111690 | 9 | bulk | |
| | 6" | 4" | 111691 | 4 | bulk | |

ROOF VENT CAPS

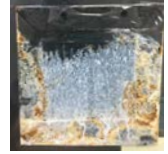
Builder's Best metal roof vent caps are rugged, high capacity terminations for bathroom and kitchen fans. Screens are removable so that caps can be used for venting clothes dryers as well. The GRV635 Black galvanized roof cap is treated with high performance polyester powder. At right are the results of the ASTM B117 testing and this roof cap shows very little corrosion.



Builder's Best coated galvanized steel



Leading Brand painted cold rolled steel



Foreign brand painted galvanized steel

GRV635 BLACK



- 26 gauge galvanized steel
- Black powder coat finish
- Removable 1/4" x 1/4" screen
- Back draft flapper
- Available with 4" collar and flush



012635



012636

Kit #012640 includes:

- One black roof cap with 4" diameter collar
- One 4" diameter x 8' UL® 181 Foil Duct
- One 3-4" Plastic Increaser/Reducer
- Two plastic Zip Torq™ clamps

| Diameter | Part # | Qty | Package | Opening | UPC |
|------------------------|---------------|----------|------------------|--------------------|----------|
| 4" | 012635 | 1 | Ind. Box | with collar | • |
| | 012645 | 1 | Disp. Box | with collar | • |
| | 012636 | 1 | Ind. Box | flush | • |
| | 012646 | 1 | Disp. Box | flush | • |
| no screen | 012642 | 1 | Ind. Box | flush | • |
| no screen | 012643 | 1 | Ind. Box | with collar | • |
| 6" | 012632 | 1 | Ind. Box | flush | • |
| 6" | 012633 | 1 | Ind. Box | with collar | • |
| 7" | 012639 | 1 | Ind. Box | with collar | • |
| 6-8" (3 1/4" x 10") | 012634 | 1 | Ind. Box | flush | • |
| 4" Black Kit | 012640 | 1 | Disp. Box | with collar | • |

GRV635 SPANGLED



- 26 gauge bright spangled galvanized
- Removable 1/4" x 1/4" screen
- Back-draft flapper
- Available with 4" collar and flush



011756



011772

| Diameter | Part # | Qty | Package | Opening | UPC |
|------------------------|--------|-----|----------|-------------|-----|
| 4" | 011755 | 1 | Ind. Box | flush | • |
| | 011756 | 1 | Ind. Box | with collar | • |
| no screen | 012120 | 1 | Ind. Box | flush | • |
| no screen | 012121 | 1 | Ind. Box | with collar | • |
| 6" | 011793 | 1 | Ind. Box | flush | • |
| | 011794 | 1 | Ind. Box | with collar | • |
| 6-8" (3 1/4" x 10") | 011772 | 1 | Ind. Box | flush | • |
| 7" | 011773 | 1 | Ind. Box | flush | • |
| | 011868 | 1 | Ind. Box | with collar | • |
| 10" | 011774 | 1 | Ind. Box | flush | • |

ARV635 ALUMINUM



- 24 gauge aluminum
- Removable 1/4" x 1/4" screen
- Back draft flapper
- Available with 4" collar and flush



011748



011754

| Diameter | Part # | Qty | Package | Opening | UPC |
|------------------------|--------|-----|----------|-------------|-----|
| 4" | 011748 | 1 | Ind. Box | flush | • |
| | 011749 | 1 | Ind. Box | with collar | • |
| no screen | 011751 | 1 | Ind. Box | flush | • |
| no screen | 011746 | 1 | Ind. Box | with collar | • |
| 6" | 011795 | 1 | Ind. Box | flush | • |
| | 011796 | 1 | Ind. Box | with collar | • |
| 6-8" (3 1/4" x 10") | 011754 | 1 | Ind. Box | flush | • |
| 7" | 011747 | 1 | Ind. Box | flush | • |
| | 011753 | 1 | Ind. Box | with collar | • |

Parts in Red indicate Display Packaging.

ROOF VENT CAPS

UMBRELLA CAP™

- Galvanized steel construction
- Rigid ribbed construction
- Economical protection from rain and snow for flues and vent pipes



| Diameter | Cap diameter | Qty | Part # | UPC |
|----------|--------------|-----|--------|-----|
| 3" | 8" | 1 | 010957 | • |
| 4" | 8" | 1 | 010958 | • |
| 5" | 12" | 1 | 010959 | • |
| 6" | 12" | 1 | 010960 | • |
| 7" | 12" | 1 | 010961 | • |
| 8" | 12" | 1 | 010962 | • |
| 9" | 17" | 1 | 010963 | • |
| 10" | 17" | 1 | 010964 | • |
| 12" | 17" | 1 | 010965 | • |

CREATIVE CROWN VENT CAP

- Galvanized steel construction for corrosion resistance
- Designed to effectively evacuate fumes from flues or pipes
- Eliminates downdrafts
- May also be used as a storm-proof air intake or exhaust
- Riveted assembly for long life



| Diameter | Head diameter | Height | Part # | UPC |
|----------|---------------|--------|--------|-----|
| 3" | 7.63" | 7" | 010921 | • |
| 4" | 7.63" | 7" | 010922 | • |
| 5" | 9" | 7.5" | 010923 | • |
| 6" | 10.5" | 9" | 010924 | • |
| 7" | 12.25" | 10.5" | 010925 | • |
| 8" | 14.13" | 11.25" | 010926 | • |
| 9" | 16.5" | 11.5" | 010927 | • |
| 10" | 18.5" | 12.5" | 010928 | • |
| 12" | 22.5" | 14.5" | 010929 | • |

BROAD BAND SIPHON VENTILATOR™

- Rugged galvanized steel to guard against rust
- Large unrestricted outlet
- Storm proof – prevents downdrafts
- Ribbed cap and wide band provide maximum protection from the weather and create a strong siphoning action

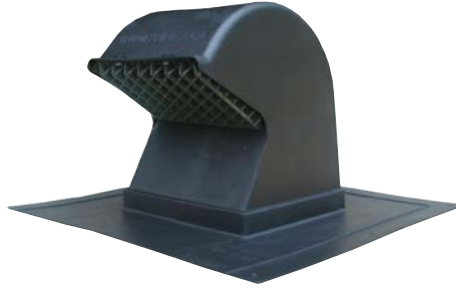


| Collar | 5mph wind | Overall | Height | Part # | UPC |
|--------|-----------|---------|--------|--------|-----|
| 3" | 2500 | 11" | 6" | 010939 | • |
| 4" | 3000 | 11" | 6" | 010940 | • |
| 5" | 3500 | 15" | 7.5" | 010941 | • |
| 6" | 4000 | 15" | 7.5" | 010942 | • |
| 7" | 5200 | 15" | 7.5" | 010943 | • |
| 8" | 6500 | 15" | 7.5" | 010944 | • |
| 9" | 7500 | 20" | 10" | 010945 | • |
| 10" | 8400 | 20" | 10" | 010946 | • |
| 12" | 9600 | 20" | 10" | 010947 | • |

ROOF VENT CAPS

RV28 GOOSENECK primex[®]

- UV protected polymer resin
- One piece, seamless construction
- Removable screen
- Removable backdraft damper
- ½" x ½" molded grid
- 4" thru 8" snap-in adapters available separately
- 26.5 square inches mouth opening



| Diameter | Part # | Qty |
|----------------------|--------|-----|
| Black roof cap only: | | |
| 4" - 8" | 111786 | 5 |

ROOF CAP ADAPTER

- Snap fits with Plastic Gooseneck (above) & Heavy Duty Low Profile (below)
- Also for use with Premium Eave Vent on Page 21



| Diameter | Part # | Qty |
|-----------------|--------|-----|
| Black Adapters: | | |
| 4" | 111787 | 8 |
| 5" | 111788 | 8 |
| 6" | 111789 | 8 |
| 7" | 111790 | 6 |
| 8" | 111791 | 6 |

RVL28 primex[®]

- UV protected polymer resin
- One piece, seamless construction
- Removable screen
- Removable backdraft damper
- ½" x ½" molded grid
- 4" thru 8" snap-in adapters available separately
- 27.8 square inch mouth opening



| Diameter | Part # | Qty |
|----------------------|--------|-----|
| Black roof cap only: | | |
| 4" - 8" | 111797 | 6 |

RV20 primex[®]

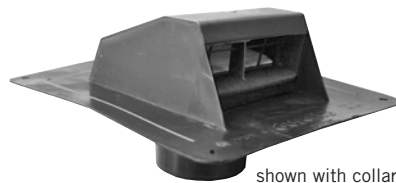
- 20 sq. inches of "free area"
- One piece molded hood maximizes protection from leaks
- Fixed screen
- Removable damper
- UV protected polymer resin
- 6.5" x 6.88" x 4.88"



| Diameter | Part # | Qty | Opening |
|--------------|--------|-----|---------|
| 4" - 5" - 6" | 111866 | 10 | collar |

DURAFLO[®] ROOF CAP

- Heavy duty black plastic (polypropylene), modified for impact and UV resistance
- Flexible flange
- Molded screen
- Unique chatterless flapper
- Available flush mount or with a 3" long collar which adapts to 4" & 5" pipe
- Exhausts dryer vents or bathroom fan vents thru the roof.
- Made in Canada



shown with collar

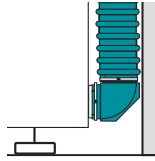
| Diameter | Part # | Qty | Opening | UPC |
|--|--------|-----|---------|-----|
| Dryer Vent: | | | | |
| 4" - 5" | 111250 | 6 | collar | |
| up to 5" | 111507 | 4 | flush | |
| Bathroom Vent: | | | | |
| 4" - 5" | 111508 | 6 | collar | |
| up to 5" | 111509 | 4 | flush | |
| Bathroom Vent Kit with collar, 8' foil, increaser/reducer and clamps | | | | |
| 4" - 5" | 011885 | 1 | collar | • |

SAF-T-DUCT® ELBOWS

CLOSE ELBOW®



- Turns 90° within 4"
- One male rotating snap-lock™ collar
- One female rotating snap-lock™ collar
- Best choice for 90° turns, especially on the dryer.

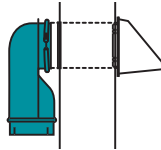


| Diameter | Part # | Qty | Package | UPC |
|----------|--------|-----|--------------|-----|
| 4" | 110161 | 6 | Display Card | • |
| | 010151 | 24 | Display Card | • |
| | 110108 | 24 | bulk | |

WALL OFFSET ELBOW®



- Turns 90° within 4"
- One male rotating snap-lock™ collar
- One female snap-lock™ collar
- Use when outlet pipe in wall protrudes up to 2.5" and cannot be trimmed.

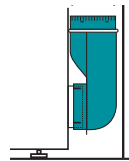


| Diameter | Part # | Qty | Package | UPC |
|----------|--------|-----|--------------|-----|
| 4" | 110162 | 4 | Display Card | • |
| | 010152 | 20 | Display Card | • |
| | 110109 | 20 | bulk | |

DRYER OFFSET ELBOW®



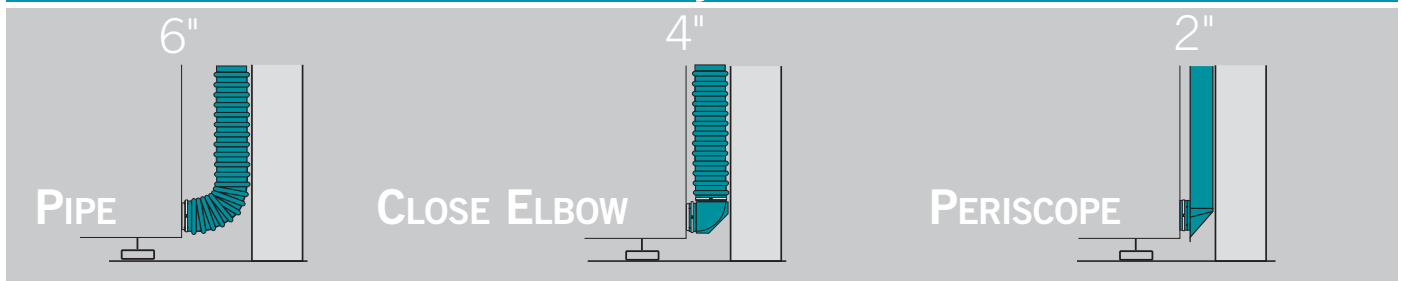
- Turns 90° within 4"
- One female rotating snap-lock™ collar
- One male snap-lock™ collar
- Use when outlet pipe on dryer protrudes up to 2.5" and cannot be trimmed.
- Can also be used on wall outlet pipe if pipe is too large for Wall Offset Elbow®



| Diameter | Part # | Qty | Package | UPC |
|----------|--------|-----|--------------|-----|
| 4" | 110165 | 4 | Display Card | • |
| | 010155 | 20 | Display Card | • |
| | 110110 | 20 | bulk | |

Parts in Red indicate Display Packaging.

Clearance behind dryer • SPACE SAVINGS



SAF-T-DUCT® Dryer Venting is the trusted solution for professional installers nationwide. These parts are available in several retail programs. It meets all clothes dryer manufacturer specifications. Heavy duty aluminum, Snap-Lock™ fittings, unique elbows and periscopes round out this line.



SAF-T-DUCT® SEMI-RIGID ALUMINUM DUCT

V830 BUILDER'S BEST®

- Best choice for dryer venting
- 4" Aluminum Snap-Lock™ Fittings

Builder's Best® Flexible Pipe is designed to snap-lock™ to elbows or to other pieces of V830 for longer runs.



| Diameter | Length | Part # | Qty | Package | UPC |
|------------------------------|--------|--------|-----|--------------|-----|
| 4" | 6' | 110129 | 12 | Display Bag | • |
| | 6' | 010016 | 12 | Display Tray | • |
| | 5' | 110138 | 15 | bulk | |
| | 6' | 110107 | 12 | bulk | |
| | 8' | 110120 | 20 | bulk | |
| | 12' | 110079 | 20 | bulk | |
| With two steel screw clamps: | | | | | |
| 4" | 6' | 110092 | 12 | bulk | |

V530 E-Z-FASTEN™

- 4" Aluminum Male Snap-Lock Fitting
- One soft-cuff end



| Diameter | Length | Part # | Qty | Package | UPC |
|--|--------|--------|-----|-------------|-----|
| 4" | 5' | 110130 | 5 | Display Bag | • |
| | 5' | 010150 | 15 | Display Bag | • |
| | 5' | 110105 | 15 | bulk | |
| | 8' | 110180 | 20 | bulk | |
| E-Z-Fasten™ Shortie™ includes one steel screw clamp: | | | | | |
| 4" | 2' | 110160 | 30 | bulk | |

V430 READI-PIPE™

- 4" aluminum soft cuff both ends
- Soft cuff ends are ready to clamp to other components.



| Diameter | Length | Part # | Qty | Package | UPC |
|---|--------|--------|-----|-------------|-----|
| 4" | 4' | 110088 | 20 | bulk | |
| | 5' | 110089 | 15 | bulk | |
| | 6' | 110090 | 12 | bulk | |
| | 8' | 110091 | 12 | bulk | |
| 4" x 8' Read-PIPE™ Display Bag includes two steel clamps: | | | | | |
| 4" | 8' | 110131 | 12 | Display Bag | • |

EXTENSION COLLAR

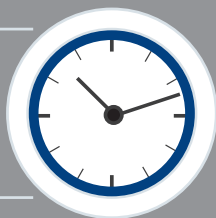
- 4" diameter x 3" aluminum collar
- Snap-lock fittings



| Diameter | Length | Part # | Qty | Package |
|----------|--------|--------|-----|---------|
| 4" | 3" | 110103 | 25 | bulk |

MONEY SAVINGS with All Metal Venting

ENHANCED
DRYER
EFFICIENCY
AND LIFESPAN



MEETS
DRYER
MANUFACTURER
RECOMMENDATIONS



FLAME
RESISTANT
ALL METAL
CONSTRUCTION



Parts in Red indicate Display Packaging.



SAF-T-DUCT® Dryer Venting is the trusted solution for professional installers nationwide. These parts are available in several retail programs. It meets all clothes dryer manufacturer specifications. Heavy duty aluminum, Snap-Lock™ fittings, unique elbows and periscopes round out this line.

SAF-T-DUCT® SEMI-RIGID ALUMINUM DUCT

V450-TD BUILDER'S BEST®

- One male snap-lock™ crimped fitting
- One female snap-lock™ slotted fitting
- 4" diameter
- 6' length compressed to approx 30"



| Diameter | Length | Part # | Qty | Package |
|---------------------|--------|--------|-----|---------|
| Builder's Best® UL® | | | | |
| 4" | 6' | 110548 | 12 | bulk |
| E-Z-Fasten™ UL® | | | | |
| 4" | 8' | 110546 | 12 | bulk |
| Readi-Pipe™ UL® | | | | |
| 4" | 6' | 111700 | 12 | bulk |
| | 8' | 110545 | 12 | bulk |
| Plain End UL® | | | | |
| 4" | 8' | 110592 | 12 | bulk |

V450-TD E-Z-FASTEN™

- One male snap-lock™ crimped fitting
- One soft-cuff slotted end
- 4" diameter
- 8' length compressed to approx 30"



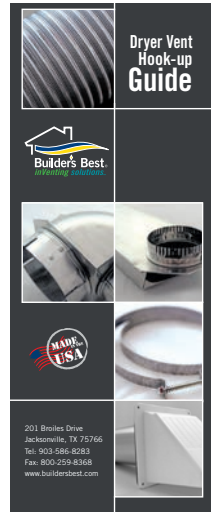
V450-TD READI-PIPE™

- both ends are slotted soft cuffs
- 4" diameter
- 8' length compressed to approx 30"



V250-TD PLAIN END

- both ends are plain
- 4" diameter
- 8' length compressed to approx 30"



Hook-up Guide Available.

Elbows Enhance Installation

| | | |
|---|---|--|
| <p>90° TURNS TAKE LESS SPACE</p> | <p>LOOP SYSTEMS PROVIDE GOOD AIRFLOW</p> | <p>2 SECTIONS OF PIPE PROVIDE OVER-THE-TOP CONNECTIVITY</p> |
|---|---|--|

Builder's Best is proud to label the first complete line of ALL METAL UL® 2158 dryer venting which complies with clothes dryer manufacturer recommendations.



SAF-T-DUCT® UL® DRYER VENT KITS

UL® METAL DRYER VENT KITS



SINGLE ELBOW KIT UL®

- One piece 8' UL® flexible pipe
- One Close Elbow®
- One crimped (male) fitting
- Two metal clamps



UL® Single Elbow Kit

| Diameter | Length | Part # | Qty | Package | UPC |
|-----------------------|-----------|---------------|----------|--------------------|----------|
| Single Elbow Kit UL® | | | | | |
| 4" | 8' | 111718 | 4 | Ind. Box | |
| Close Loop™ Kit UL® | | | | | |
| 4" | 6' | 111693 | 4 | Ind. Box | |
| | 6' | 111926 | 4 | Display Box | • |
| Over-The-Top® Kit UL® | | | | | |
| 4" | 8' | 111920 | 4 | Ind. Box | |
| Installer's Kit® UL® | | | | | |
| 4" | 8' | 111922 | 4 | Ind. Box | |

CLOSE LOOP™ KIT UL®

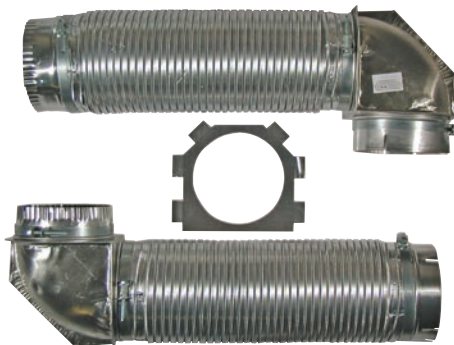
- One piece 6' UL® flexible pipe
- Two Close Elbows®
- Two metal clamps



UL® 6' Close Loop Kit

OVER-THE-TOP® KIT UL®

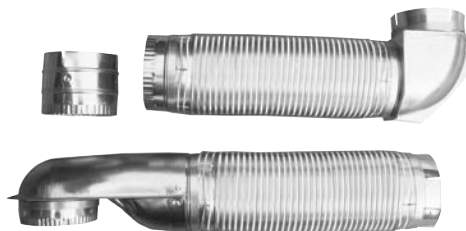
- Two 4' UL® flexible pipe sections
- Two Close Elbows® (attached to pipe)
- Two metal clamps for wall and dryer connections
- One wall plate for flush clearance



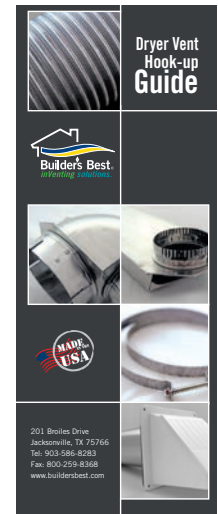
UL® Over-The-Top®

INSTALLER'S KIT® UL®

- One 4' UL® flexible pipe attached to a Close Elbow®
- One 4' UL® flexible pipe attached to a Wall Offset Elbow®
- One extension collar (used for recessed wall pipes)
- Two clamps for wall and dryer connection



UL® Installer's Kit®



Hook-up Guide Available.

Parts in Red indicate Display Packaging.



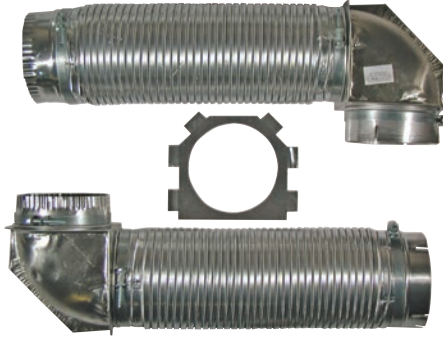
Builder's Best is proud to label the first complete line of ALL METAL UL® 2158 dryer venting which complies with clothes dryer manufacturer recommendations.

SAF-T-DUCT® DRYER VENT KITS

OVER-THE-TOP® SNAP-LOCK™ DRYER VENT KIT



- Installs in 4½", when wall pipe is trimmed flush and wall plate is used. Swivel collars on elbows allow dryer to be pulled away from wall for cleaning without disconnecting.
- Kit contains:
 - 2 - 4 ft pipe sections
 - 2 - Close Elbows® (attached)
 - 2 - clamps for wall and dryer connections
 - 1 - wall plate for flush clearance
- Total kit length: 8 feet
- Pipe snap-locks together, as final step



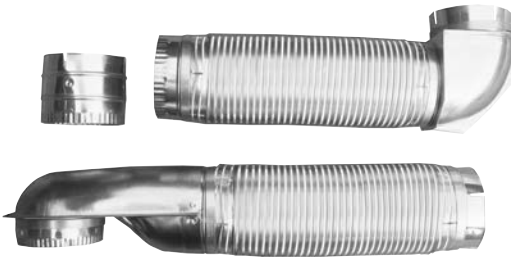
| Part # | Qty | Package | UPC |
|---------------|----------|--------------------|-----|
| 110171 | 4 | Display Box | • |
| 110127 | 6 | bulk | |
| UL® version | | | |
| 111920 | 4 | Ind. Box | |

INSTALLER'S KIT® WITH SNAP-LOCK™ DRYER VENT KIT



Wall offset elbow allows the wall pipe to protrude up to 2½" without trimming. Box is kraft with UPC barcode and instructions printed in black on the outside.

- Kit contains:
 - 1 - 4 ft pipe section attached to a Close Elbow®
 - 1 - 4 ft pipe section attached to a wall elbow®
 - 1 - extension collar (for recessed wall pipe)
 - 2 - clamps for wall and dryer connection
- Total kit length: 8 feet

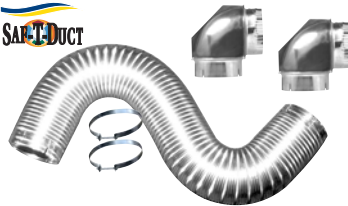


| Part # | Qty | Package | UPC |
|-------------|-----|----------|-----|
| 110095 | 4 | Ind. Box | • |
| 110096 | 6 | bulk | |
| UL® version | | | |
| 111922 | 4 | Ind. Box | |

ALL METAL KITS WITH ELBOWS



- One piece Flexible pipe
- Two Close Elbows®
- Four metal clamps

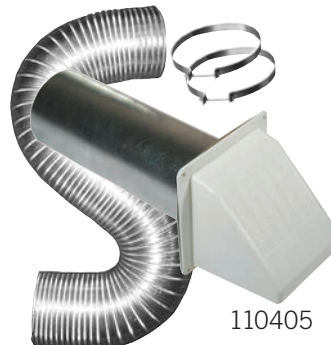


| Pipe | Part # | Qty | Package | UPC |
|--|--------|-----|----------|-----|
| 4" x 6' V830 Builder's Best® Loop Kit* | 110043 | 4 | Ind. Box | • |
| *This kit only requires two clamps thanks to the Snap-Lock Pipe. | | | | |
| 4" x 6' V430 Readi-Pipe™ Loop Kit | 110049 | 4 | Ind. Box | • |
| 4" x 8' V430 Readi-Pipe™ Loop Kit | 110050 | 4 | Ind. Box | • |

ALL METAL KITS WITH HOODS

- V230 or V220 plain end flexible pipe
- 5' and 8' lengths
- Two metal clamps
- Hoods have 10" tails and may require assembly

| Pipe | Hood Style | Part # | Qty | Package | UPC |
|---------------------|-------------------------------|---------------|----------|--------------------|----------|
| 4" x 5' V230 | Wide Mouth Aluminum | 112101 | 4 | Ind. Box | • |
| 4" x 8' V230 | Wide Mouth Aluminum | 110536 | 4 | bulk | |
| 4" x 8' V220 | White Wide Mouth Plastic | 110625 | 12 | Ind. Box | • |
| 4" x 8' V220 | Brown Wide Mouth Plastic | 110626 | 12 | Ind. Box | • |
| 4" x 8' V220 | Brown Louvered Plastic | 112100 | 6 | Ind. Box | • |
| 4" x 8' V220 | White Louvered Plastic | 111405 | 6 | Display Box | • |
| 4" x 5' V220 | Wide Mouth Aluminum | 110537 | 4 | Display Box | • |



110405



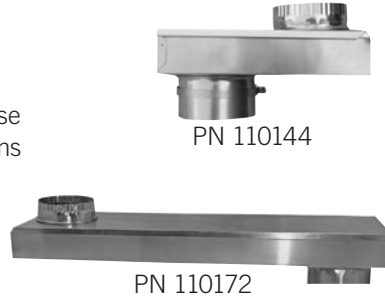
110537

Parts in Red indicate Display Packaging.

SAF-T-DUCT® PERISCOPES

ZERO PERISCOPE™

- Available in 0-5 and 0-18 lengths
- Use where outlets overlap or are very close
- Baffles help direct airflow in 3-5" situations
- Sections are not reversible



| Length | Part # | Qty | Package | UPC |
|--------------------------|---------------|----------|---------------------|-----|
| 0-5" with baffle | 110175 | 9 | Display Card | • |
| no baffle | 110144 | 9 | bulk | |
| no baffle | 110149 | 8 | Ind. Box | • |
| 0-18" with baffle | 110172 | 4 | Display Box | • |
| with baffle | 110128 | 4 | Display Bag | • |
| with baffle | 010158 | 8 | Display Bag | • |
| with baffle | 110146 | 8 | bulk | |
| with baffle | 110148 | 4 | Ind. Box | • |

18-29" PERISCOPE

- Reaches side of most dryers
- Two piece assembly



| Length | Part # | Qty | Package | UPC |
|---------------|---------------|----------|--------------------|-----|
| 18-29" | 110173 | 4 | Display Box | • |
| | 110133 | 4 | Display Bag | • |
| | 010153 | 9 | Display Bag | • |
| | 110114 | 9 | bulk | |
| | 110116 | 4 | Ind. Box | • |

29-50" PERISCOPE

- Reaches top of most dryers
- Four piece assembly

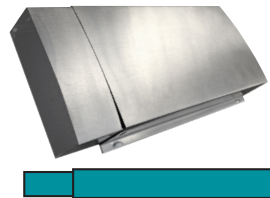


| Length | Part # | Qty | Package | UPC |
|---------------|---------------|----------|--------------------|-----|
| 29-50" | 110174 | 4 | Display Box | • |
| | 110117 | 4 | Ind. Box | • |

Parts in Red indicate Display Packaging.

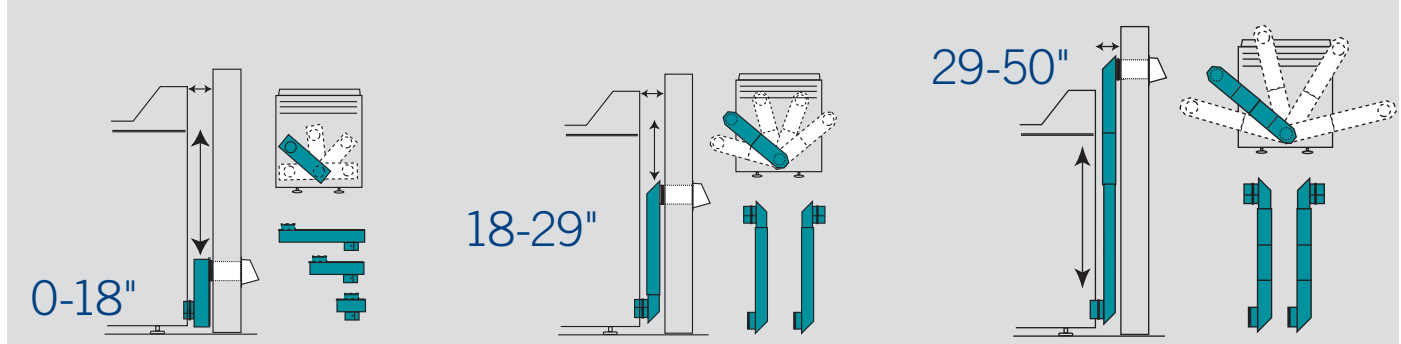
EXTENSION PIECES

- 2" x 6" rigid metal with no fittings
- Slide into and over 18-29, 29-50 and 29-74" sections to lengthen.
- Use aluminum tape to secure the sections



| Length | Part # | Qty | Package |
|---------------|--------|-----|---------|
| 23" extension | 110141 | 8 | bulk |
| 43" extension | 110142 | 8 | bulk |

Slide • Rotate • Adjust • Maintain Airflow



SAF-T-DUCT® Periscopes are 2" x 6" rigid aluminum with 4" draw-band collars and Snap-Lock™ crimped fittings. These periscopes reduce the space needed behind the dryer from 6" with pipe along to 2" WITHOUT reducing airflow. We cover the widest range of lengths in the industry.

SAF-T-DUCT® IN-WALL PERISCOPES

GALVANIZED ROUGH-IN SYSTEM

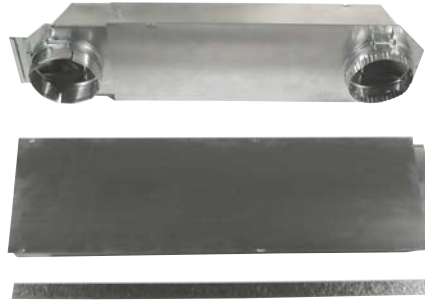
- 29" to 74" length (6' version)
- 30 Gauge Galvanized Steel
- In-wall (prior to dry-wall)
- Standard 4" diameter fittings
- Mounting strap included
- 6' or 8' length (for 8' or 10' ceilings)



| Description | Part # | Qty | Package |
|-------------------------|--------|-----|----------|
| 6' Galvanized Periscope | 110868 | 3 | Ind. Box |
| 8' Galvanized Periscope | 110869 | 3 | Ind. Box |

ALUMINUM ROUGH-IN SYSTEM

- 29" to 74" length
- 26 gauge aluminum
- Four telescoping sections
- One male snap-lock fitting
- One female snap-lock collar
- Mounting strap included



| Description | Part # | Qty | Package | UPC |
|------------------------------|---------------|----------|--------------------|-----|
| 6' Aluminum Periscope | 110094 | 3 | Display Box | • |
| | 110140 | 3 | Ind. Box | • |

BUILDER'S BEST® DRYER EAVE VENT

- 4" collar
 - Back draft flapper
 - No screen per IBC building codes
 - Installs flush with eave
- Good for clothes dryer venting.



| Description | Part # | Qty | Package | UPC |
|-----------------------------------|---------------|----------|---------------------|-----|
| 4" female snap-lock collar | 110166 | 8 | Display Card | • |
| | 110139 | 8 | bulk | |
| 4" male crimped collar | 110200 | 8 | bulk | |

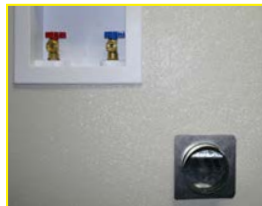
Parts in Red indicate Display Packaging.

When it is not possible to vent using a through-wall vent hood, an in-wall periscope and eave vent work well.

Install the periscope well off the floor to allow for dryer duct. Cut a hole in the top plate to run the periscope to the access. Continue the run with flexible or rigid pipe according to code.

The Builder's Best® aluminum dryer eave vent maintains critical airflow but is hidden from view within the eave. The lightweight back-draft flapper is designed to lay open gently while in use without making a sound.

Lint from the dryer is easily dispersed into the air.



This 6' galvanized periscope is installed with fittings facing the same direction.

The bottom outlet is installed 19" off the floor to allow for easier dryer hookups.



SAF-T-DUCT® DRYER OUTLET BOX

DRYER OUTLET BOX

- One Self trimming unit:
18" wide by 24" high
- Fits all 16" centers 2x4's and 2x6's;
- Six prescored, true 4" diameter knockouts in most common positions
- Six starburst knockouts for gas connections and venting
- Plastic meets UL® standard 94HB tests for flammability



| Description | Part # | Qty | Package | UPC |
|---|---------------|----------|--------------------|----------|
| Single box | 110697 | 10 | bulk | |
| | 110698 | 3 | Ind. Box | |
| | 110696 | 3 | Display Box | • |
| Box with round to oval adapter/fitting: | | | | |
| | 111563 | 3 | Display Box | • |

Parts in Red indicate Display Packaging.

DRYER OUTLET BOX KIT

Kit Includes:

- One Dryer Outlet Box
- One Periscope
- Two rectangle to round transitions



| Description | Part # | Qty | Package |
|------------------|--------|-----|----------|
| Kit for 8' wall | 111000 | 5 | Ind. Box |
| Kit for 10' wall | 111001 | 5 | Ind. Box |

TRANSITIONS



110518



111396



111850

| Description | Part # | Qty | Package |
|-----------------------|--------|-----|---------|
| Rectangle to round | 110518 | 12 | bulk |
| Round to oval | 111396 | 16 | bulk |
| Plastic squeeze elbow | 111850 | 9 | bulk |

Clean finish with the Dryer Outlet Box leaving room for the dryer duct.



Dryer is close without crushing the duct.



Rectangle to round transition going through the header.



This Dryer Outlet Box is installed at the floor.

The 6' In-Wall Periscope has a rectangle to round transition going through the header.

PART NUMBER CROSS REFERENCE

| Part # | Pg | Part # | Pg | Part # | Pg | Part # | Pg | Part # | Pg | Part # | Pg | Part # | Pg | Part # | Pg | Part # | Pg | Part # | Pg | Part # | Pg | Part # | Pg |
|--------|----|--------|----|--------|----|--------|----|--------|----|--------|----|--------|----|--------|----|--------|----|--------|----|--------|----|--------|----|
| 010016 | 28 | 011113 | 13 | 012635 | 24 | 110170 | 15 | 110330 | 17 | 110584 | 7 | 110806 | 4 | 110975 | 20 | 111129 | 12 | 111308 | 5 | 111661 | 5 | 111918 | 20 |
| 010150 | 28 | 011114 | 13 | 012636 | 24 | 110171 | 31 | 110332 | 17 | 110585 | 7 | 110807 | 4 | 110976 | 20 | 111131 | 12 | 111309 | 5 | 111662 | 5 | 111920 | 30 |
| 010151 | 27 | 011136 | 12 | 012639 | 24 | 110172 | 32 | 110334 | 18 | 110592 | 29 | 110808 | 4 | 110977 | 20 | 111132 | 12 | 111310 | 5 | 111663 | 5 | 111922 | 30 |
| 010152 | 27 | 011143 | 12 | 012640 | 9 | 110173 | 32 | 110336 | 18 | 110597 | 10 | 110809 | 4 | 111000 | 34 | 111133 | 12 | 111311 | 5 | 111664 | 5 | 111926 | 30 |
| 010153 | 32 | 011144 | 12 | 012642 | 24 | 110174 | 32 | 110338 | 18 | 110603 | 9 | 110810 | 4 | 111001 | 34 | 111134 | 12 | 111312 | 5 | 111665 | 5 | 111929 | 15 |
| 010155 | 27 | 011148 | 13 | 012643 | 24 | 110175 | 32 | 110340 | 18 | 110609 | 9 | 110811 | 20 | 111002 | 8 | 111137 | 12 | 111313 | 5 | 111666 | 5 | 111941 | 21 |
| 010158 | 32 | 111263 | 5 | 012645 | 24 | 110177 | 17 | 110342 | 18 | 110610 | 9 | 110812 | 20 | 111003 | 20 | 111139 | 12 | 111314 | 5 | 111667 | 5 | 111942 | 21 |
| 010179 | 17 | 111264 | 5 | 012646 | 24 | 110180 | 28 | 110344 | 4 | 110611 | 9 | 110813 | 20 | 111004 | 20 | 111141 | 12 | 111315 | 5 | 111668 | 5 | 112073 | 16 |
| 010186 | 8 | 111265 | 5 | 100017 | 11 | 110181 | 8 | 110345 | 4 | 110612 | 9 | 110825 | 9 | 111005 | 20 | 111142 | 12 | 111320 | 5 | 111669 | 5 | 112080 | 16 |
| 010187 | 8 | 111266 | 5 | 110003 | 18 | 110182 | 8 | 110347 | 4 | 110618 | 9 | 110826 | 9 | 111006 | 20 | 111145 | 13 | 111321 | 5 | 111670 | 5 | 112100 | 31 |
| 010203 | 9 | 011316 | 5 | 110004 | 18 | 110184 | 8 | 110348 | 4 | 110620 | 9 | 110830 | 18 | 111007 | 20 | 111149 | 18 | 111322 | 5 | 111689 | 23 | 112101 | 31 |
| 010204 | 9 | 011317 | 5 | 110043 | 31 | 110185 | 8 | 110350 | 4 | 110625 | 31 | 110831 | 18 | 111008 | 20 | 111151 | 18 | 111323 | 5 | 111690 | 23 | 112145 | 22 |
| 010205 | 9 | 011318 | 5 | 110046 | 11 | 110188 | 19 | 110351 | 4 | 110626 | 31 | 110832 | 18 | 111010 | 20 | 111153 | 18 | 111324 | 5 | 111691 | 23 | 112251 | 21 |
| 010206 | 9 | 011319 | 5 | 110047 | 11 | 110189 | 19 | 110383 | 6 | 110636 | 8 | 110833 | 18 | 111011 | 20 | 111155 | 18 | 111325 | 5 | 111692 | 18 | 112291 | 16 |
| 010207 | 9 | 011330 | 5 | 110048 | 11 | 110199 | 19 | 110384 | 6 | 110637 | 8 | 110834 | 18 | 111012 | 20 | 111157 | 14 | 111326 | 5 | 111693 | 30 | 112292 | 16 |
| 010208 | 9 | 011331 | 5 | 110049 | 31 | 110200 | 19 | 110385 | 6 | 110638 | 8 | 110835 | 18 | 111013 | 20 | 111159 | 13 | 111327 | 5 | 111700 | 29 | 112293 | 16 |
| 010210 | 9 | 011332 | 5 | 110050 | 31 | 110201 | 9 | 110400 | 7 | 110639 | 8 | 110836 | 18 | 111014 | 20 | 111161 | 13 | 111328 | 5 | 111704 | 22 | 112294 | 16 |
| 010242 | 9 | 011333 | 5 | 110052 | 11 | 110202 | 9 | 110401 | 6 | 110640 | 8 | 110837 | 18 | 111015 | 20 | 111163 | 13 | 111329 | 5 | 111705 | 16 | 112295 | 16 |
| 010346 | 4 | 011436 | 7 | 110053 | 11 | 110215 | 9 | 110402 | 6 | 110641 | 8 | 110838 | 18 | 111016 | 20 | 111165 | 13 | 111356 | 5 | 111706 | 16 | 112296 | 16 |
| 010349 | 4 | 011440 | 7 | 110054 | 11 | 110216 | 9 | 110404 | 7 | 110642 | 8 | 110839 | 18 | 111017 | 20 | 111167 | 13 | 111357 | 5 | 111712 | 16 | 112297 | 16 |
| 010352 | 4 | 011441 | 7 | 110055 | 11 | 110218 | 9 | 110405 | 7 | 110643 | 8 | 110840 | 18 | 111018 | 20 | 111169 | 13 | 111358 | 5 | 111713 | 16 | 112298 | 16 |
| 010353 | 4 | 011443 | 7 | 110056 | 14 | 110219 | 9 | 110410 | 17 | 110644 | 8 | 110841 | 18 | 111024 | 12 | 111171 | 13 | 111365 | 17 | 111714 | 16 | 112299 | 16 |
| 010354 | 4 | 011444 | 7 | 110057 | 14 | 110220 | 9 | 110413 | 7 | 110645 | 8 | 110842 | 18 | 111026 | 12 | 111173 | 13 | 111368 | 17 | 111715 | 16 | | |
| 010355 | 4 | 011447 | 7 | 110059 | 11 | 110221 | 9 | 110414 | 7 | 110646 | 10 | 110843 | 18 | 111027 | 12 | 111175 | 13 | 111373 | 17 | 111716 | 16 | | |
| 010356 | 4 | 011450 | 6 | 110062 | 11 | 110222 | 9 | 110416 | 7 | 110648 | 14 | 110844 | 18 | 111028 | 12 | 111177 | 13 | 111374 | 17 | 111717 | 16 | | |
| 010357 | 4 | 011452 | 6 | 110065 | 22 | 110223 | 9 | 110417 | 7 | 110653 | 11 | 110845 | 18 | 111033 | 12 | 111179 | 13 | 111375 | 17 | 111718 | 30 | | |
| 010358 | 4 | 011454 | 7 | 110071 | 22 | 110224 | 9 | 110418 | 7 | 110660 | 9 | 110846 | 18 | 111035 | 12 | 111181 | 13 | 111376 | 17 | 111732 | 17 | | |
| 010431 | 7 | 011456 | 7 | 110074 | 22 | 110244 | 9 | 110419 | 7 | 110661 | 9 | 110847 | 18 | 111037 | 12 | 111183 | 13 | 111377 | 15 | 111733 | 17 | | |
| 010507 | 10 | 011458 | 7 | 110075 | 22 | 110246 | 6 | 110420 | 7 | 110670 | 10 | 110848 | 18 | 111038 | 12 | 111185 | 13 | 111378 | 17 | 111734 | 18 | | |
| 010508 | 10 | 011463 | 7 | 110079 | 28 | 110247 | 6 | 110421 | 7 | 110671 | 10 | 110849 | 18 | 111039 | 12 | 111187 | 13 | 111381 | 17 | 111752 | 16 | | |
| 010558 | 11 | 011465 | 7 | 110087 | 6 | 110248 | 6 | 110425 | 7 | 110672 | 10 | 110850 | 18 | 111040 | 12 | 111189 | 13 | 111384 | 17 | 111775 | 16 | | |
| 010559 | 11 | 011466 | 7 | 110088 | 28 | 110250 | 6 | 110429 | 7 | 110673 | 10 | 110851 | 18 | 111041 | 12 | 111191 | 13 | 111387 | 13 | 111776 | 16 | | |
| 010723 | 17 | 011468 | 7 | 110089 | 28 | 110251 | 6 | 110434 | 7 | 110676 | 10 | 110852 | 18 | 111047 | 13 | 111193 | 13 | 111391 | 17 | 111777 | 16 | | |
| 010724 | 17 | 011469 | 7 | 110090 | 28 | 110252 | 6 | 110435 | 7 | 110677 | 10 | 110853 | 18 | 111049 | 13 | 111195 | 13 | 111392 | 17 | 111778 | 16 | | |
| 010743 | 11 | 011471 | 7 | 110091 | 28 | 110253 | 6 | 110439 | 7 | 110680 | 9 | 110854 | 18 | 111050 | 13 | 111197 | 13 | 111396 | 34 | 111781 | 16 | | |
| 010768 | 17 | 011473 | 7 | 110092 | 28 | 110256 | 6 | 110443 | 7 | 110681 | 20 | 110855 | 18 | 111051 | 13 | 111199 | 13 | 111405 | 31 | 111782 | 16 | | |
| 010769 | 17 | 011474 | 7 | 110094 | 33 | 110257 | 6 | 110444 | 7 | 110682 | 20 | 110856 | 18 | 111056 | 13 | 111201 | 12 | 111406 | 10 | 111783 | 16 | | |
| 010793 | 10 | 011475 | 7 | 110095 | 31 | 110259 | 6 | 110445 | 7 | 110683 | 20 | 110857 | 18 | 111058 | 13 | 111203 | 12 | 111407 | 10 | 111784 | 16 | | |
| 010921 | 25 | 011476 | 6 | 110096 | 31 | 110260 | 6 | 110453 | 7 | 110684 | 15 | 110858 | 18 | 111060 | 13 | 111205 | 12 | 111408 | 10 | 111786 | 26 | | |
| 010922 | 25 | 011479 | 6 | 110103 | 28 | 110262 | 6 | 110454 | 7 | 110690 | 4 | 110859 | 18 | 111062 | 13 | 111207 | 12 | 111411 | 17 | 111787 | 26 | | |
| 010923 | 25 | 011482 | 6 | 110105 | 28 | 110263 | 6 | 110459 | 7 | 110691 | 4 | 110860 | 18 | 111063 | 13 | 111209 | 12 | 111412 | 18 | 111788 | 26 | | |
| 010924 | 25 | 011487 | 6 | 110107 | 28 | 110264 | 6 | 110460 | 6 | 110692 | 4 | 110861 | 18 | 111064 | 13 | 111211 | 12 | 111414 | 18 | 111789 | 26 | | |
| 010925 | 25 | 011489 | 6 | 110108 | 27 | 110266 | 6 | 110480 | 22 | 110693 | 4 | 110862 | 22 | 111065 | 13 | 111213 | 12 | 111417 | 22 | 111790 | 26 | | |
| 010926 | 25 | 011491 | 6 | 110109 | 27 | 110267 | 6 | 110482 | 22 | 110694 | 20 | 110863 | 22 | 111066 | 13 | 111215 | 12 | 111419 | 14 | 111791 | 26 | | |
| 010927 | 25 | 011493 | 6 | 110110 | 27 | 110268 | 6 | 110487 | 11 | 110695 | 20 | 110864 | 22 | 111068 | 13 | 111217 | 12 | 111423 | 22 | 111797 | 26 | | |
| 010928 | 25 | 011501 | 7 | 110111 | 11 | 110269 | 6 | 110490 | 23 | 110696 | 34 | 110865 | 22 | 111070 | 13 | 111219 | 12 | 111424 | 18 | 111802 | 20 | | |
| 010929 | 25 | 011502 | 7 | 110112 | 11 | 110270 | 15 | 110491 | 23 | 110697 | 34 | 110866 | 22 | 111071 | 13 | 111221 | 12 | 111430 | 14 | 111803 | 20 | | |
| 010939 | 25 | 011641 | 13 | 110113 | 17 | 110271 | 15 | 110492 | 23 | 110698 | 34 | 110867 | 22 | 111072 | 13 | 111223 | 12 | 111503 | 20 | 111804 | 20 | | |
| 010940 | 25 | 011671 | 5 | 110114 | 32 | 110272 | 19 | 110493 | 23 | 110699 | 14 | 110868 | 33 | 111073 | 13 | 111225 | 12 | 111504 | 10 | 111805 | 20 | | |
| 010941 | 25 | 011672 | 5 | 110116 | 32 | 110273 | 19 | 110494 | 23 | 110729 | 14 | 110869 | 33 | 111076 | 12 | 111227 | 12 | 111505 | 10 | 111806 | 20 | | |
| 010942 | 25 | 011673 | 5 | 110117 | 32 | 110274 | 19 | 110495 | 23 | 110732 | 14 | 110872 | 18 | 111078 | 12 | 111229 | 12 | 111506 | 10 | 111807 | 20 | | |
| 010943 | 25 | 011674 | 5 | 110119 | 17 | 110275 | 19 | 110496 | 10 | 110744 | 4 | 110883 | 14 | 111080 | 12 | 111231 | 12 | 111507 | 26 | 111811 | 13 | | |
| 010944 | 25 | 011746 | 24 | 110120 | 28 | 110276 | 15 | 110497 | 10 | 110745 | 4 | 110885 | 14 | 111081 | 12 | 111233 | 12 | 111508 | 26 | 111830 | 20 | | |
| 010945 | 25 | 011747 | 24 | 110122 | 23 | 110277 | 15 | 110504 | 10 | 110749 | 18 | 110887 | 14 | 111082 | 12 | 111235 | 12 | 111509 | 26 | 111831 | 20 | | |
| 010946 | 25 | 011748 | 24 | 110126 | 23 | 110278 | 15 | 110505 | 10 | 110750 | 14 | 110889 | 14 | 111083 | 12 | 111237 | 12 | 111510 | 11 | 111833 | 16 | | |
| 010947 | 25 | 011749 | 24 | 110127 | 31 | 110279 | 15 | 110509 | 11 | 110751 | 20 | 110891 | 14 | 111084 | 12 | 111239 | 12 | 111511 | 11 | 111835 | 16 | | |
| 010957 | 25 | 011751 | 24 | 110128 | 32 | 110280 | 18 | 110518 | 34 | 110752 | 20 | 110893 | 20 | 111089 | 12 | 111241 | 12 | 111517 | 11 | 111850 | 34 | | |
| 010958 | 25 | 011753 | 24 | 110129 | 28 | 110281 | 18 | 110519 | 2 | | | | | | | | | | | | | | |

Builder's Best, Inc.
201 Broiles Drive
Jacksonville TX 75766

Email:
sales@venting.biz

Phone:
1-8-U VENT SAFE (1-888-368-7233)
or 903-586-8283

Fax:
1-800-259-VENT (1-800-259-8368)
or 903-586-9370

www.BuildersBest.com

The All Metal Solution to Dryer Venting™, inVenting solutions™ E-Z-Fasten™ Read-i-Pipe™ Econo-Pipe™ Metalflex™ Pro-Vent™ and ZipTorq™ are trademarks of Builder's Best, Inc. Over-The-Top® Builder's Best® SAF-T-DUCT® Nemco® and the Builder's Best Logo are registered trademarks of Builder's Best, Inc.

Builder's Best, Inc. parts are covered by U.S. Patents: 5,121,948; 5,133,579; 5,145,217; 5,158,328; 5,498,204; 5,653,631; 5,819,435; 5,943,743; 6,035,495; 6,370,794; 6,390,510; D.335,174; D.342,130; D.342,782; Canadian patents 2,062,123; 2,063,098; 2,201,956; 2,279,599; 2,299,989; 2,317,863; Builder's Best, Inc.; © and/or patents pending.