

INSTALLATION INSTRUCTIONS

FIELD INSTALLED SLAB ECONOMIZER ACCESSORY MODEL 2EE04705724 / 2EE04705824

FOR 3 THRU 12.5 TON SINGLE PACKAGE EQUIPMENT APPLICATIONS WITH / WITHOUT AN ENERGY RECOVERY VENTILATOR

General

The instruction provides all the necessary information to properly field install this economizer on the above indicated equipment.

Economizer Model 2EE04705724 / 2EE04705824 has a single input solid state enthalpy sensor that provides automatic 100% outdoor air capability with 2% leakage.

Refer to the respective unit wiring diagram for information regarding electrical circuitry on the economizer.

For applications *without* an energy recovery ventilator, order the Barometric Relief / Fresh Air Hood accessory (Model 1EH0409) separately.

Step 1:

Verify all unit parts in box.
1 ea. - Damper Assembly

Step 2:

Remove the return air duct cover and the two (2) rear panels from the end of the unit as shown. Keep screws to use later in Steps 4 and 6.

Step 3:

Slide the damper assembly into the unit as shown .



HORIZONTAL DUCT OPENING WITH
COVER AND END PANELS REMOVED

Step 4:

Secure the damper assembly to the unit with the screws removed in Step 2 though the slotted holes in the damper section.

Do Not tighten screws at this time.

Step 5:

Plug the economizer cable into the unit as shown. The "jumper" plug that ships with the unit should be removed and saved in the control compartment for future needs.



UNIT PLUG

ECONOMIZER
HARNESS

INSTALLATION INSTRUCTIONS

FIELD INSTALLED SLAB ECONOMIZER ACCESSORY MODEL 2EE04705724 / 2EE04705824

Step 6:

Reinstall the horizontal duct cover which was removed in Step 2 using the remaining screws also removed in Step 2.

Step 7:

The Discharge Air Sensor installs in the blower compartment of the unit. Open the access door to the blower and you will see a cable on the left side. The cable has two wires with insulated connectors that the Discharge Air Sensor plugs into. These wires are shown in the photo. Plug the Discharge Air Sensor wires into those provided inside the unit, and using a wire tie, strap the Discharge Air Sensor to the cable as shown below.

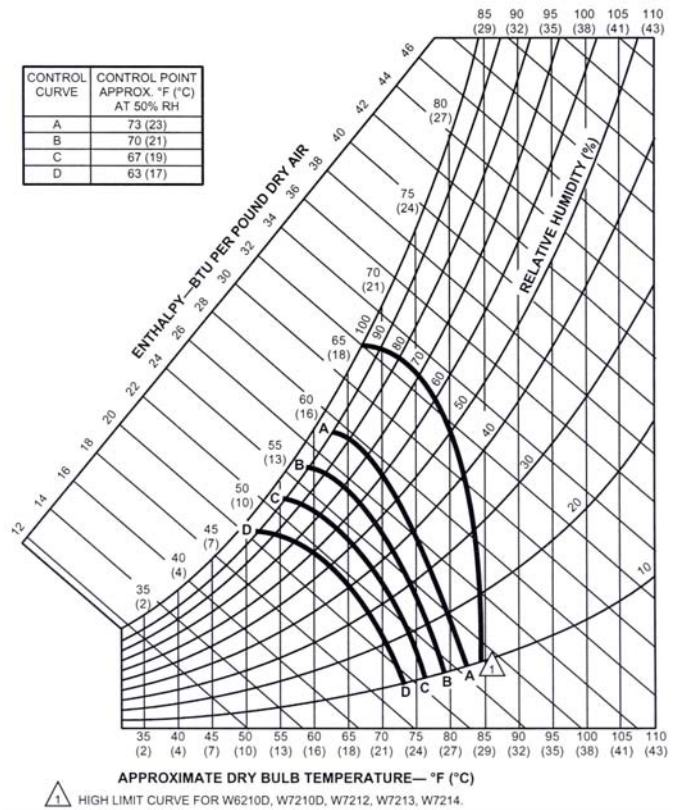


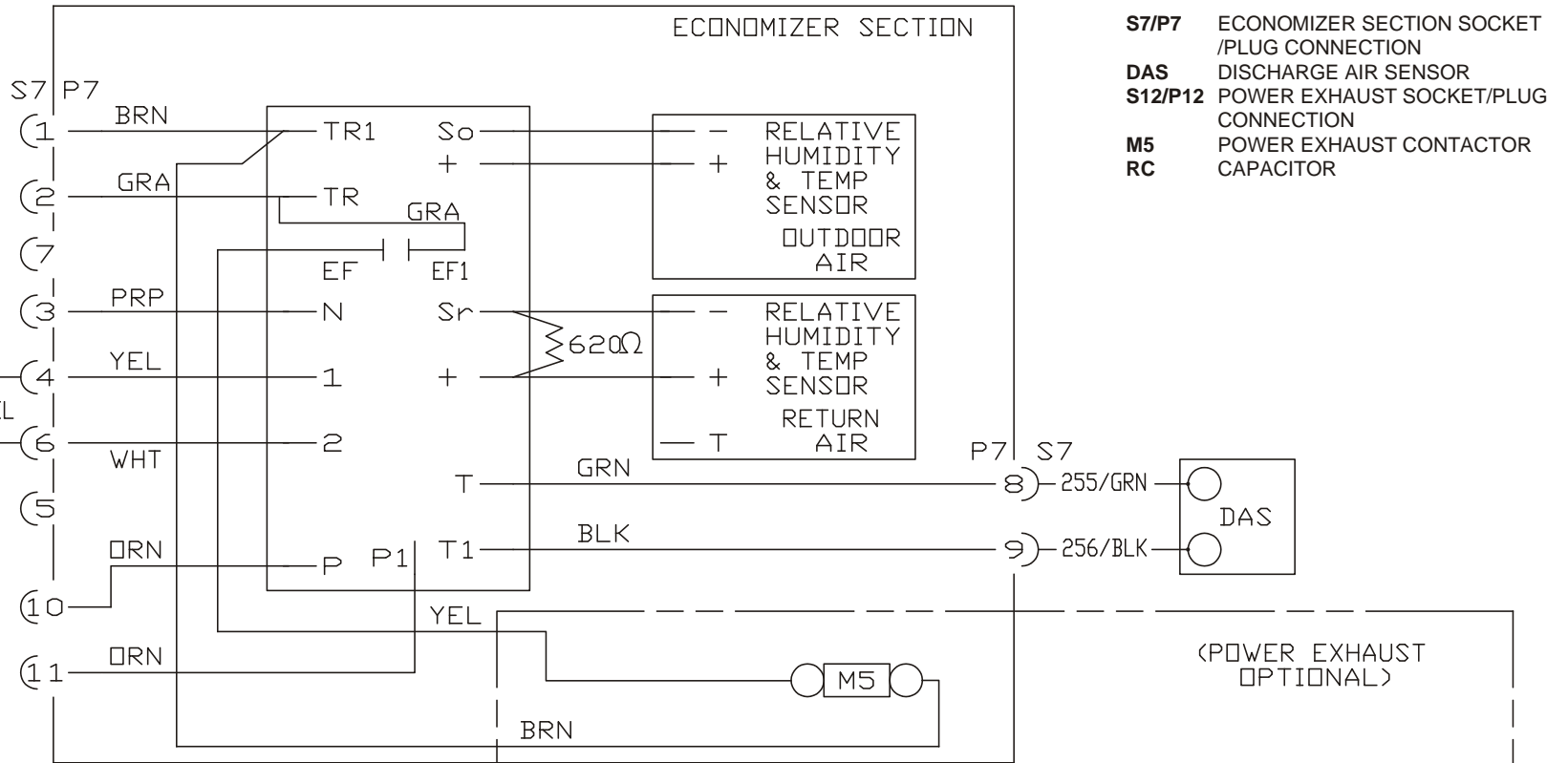
DISCHARGE AIR SENSOR WIRES



WIRE TIE

DISCHARGE AIR SENSOR





NOTES:

1. ALL FIELD WIRING TO BE ACCOMPLISHED FOLLOWING CITY, LOCAL AND/OR NATIONAL CODES IN EFFECT AT TIME OF INSTALLATION OF THIS UNIT.
2. CAUTION: LABEL ALL WIRES PRIOR TO DISCONNECTION WHEN SERVICING CONTROLS. WIRING ERRORS CAN CAUSE IMPROPER AND DANGEROUS OPERATION. IF ANY OF THE WIRE, AS SUPPLIED WITH THE UNIT MUST BE REMOVED. IT MAY BE REPLACED WITH TYPE 105 DEGREE C, 600 VOLT WIRE OR EQUIVALENT CLEARLY RENUMBERED FOR IDENTIFICATION. VERIFY PROPER OPERATION AFTER SERVICING.
3. WHEN ECONOMIZER IS INSTALLED REMOVE PLUG WITH JUMPER WIRE 816/YEL

