

GAS FURNACES



CRITERION® II PLUS 2 TWO STAGE 80% A.F.U.E.† DOWNFLOW GAS FURNACES

The Rheem® Criterion II Plus 2 line of downflow gas furnaces is designed for installation in closets, alcoves, utility rooms, or attics. The design is certified by CSA International.

Features

- Patented heat exchanger, constructed of both stainless and aluminized steel for the maximum in corrosion resistance.
- Low profile "34 inch" [864 mm] design is lighter and easier to handle, and leaves room for optional equipment.
- Left or right side gas and electric inlet connections with quick, simple change.
- Direct spark ignition.
- Integrated control board with humidifier and electronic air cleaner hookups.
- Insulated blower compartment, a two stage gas valve and a specially designed two speed draft inducer motor make it one of the quietest furnaces on the market today.
- Pre-paint galvanized steel cabinet.
- Grab-holes in doors to aid in easy door removal and replacement.
- Compatible with single or two-stage thermostat. (For optimal performance, two-stage thermostat recommended.)

A variety of cooling coils and plenums designed to use with Rheem Criterion II Plus 2 gas furnaces are available as optional accessories.

†A.F.U.E. (Annual Fuel Utilization Efficiency) calculated in accordance with Department of Energy test procedures.

RGLK- SERIES

Models with Input Rates from
50,000 to 150,000 BTU/HR
[15 to 44 kW]
(U.S. & Canadian Models)

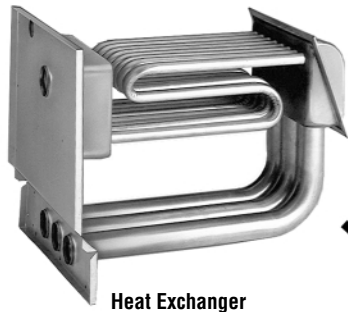


ENERGUIDE			
Annual Fuel Utilization Efficiency - AFUE			
THIS MODEL			
80.0%			
MID		HIGH	
78%	82%	88%	97%

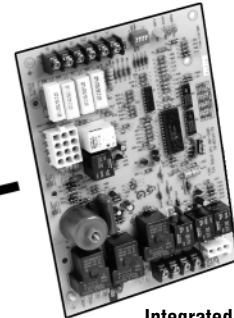




RHEEM CRITERION II PLUS 2 TWO STAGE 80% DOWNFLOW GAS FURNACE



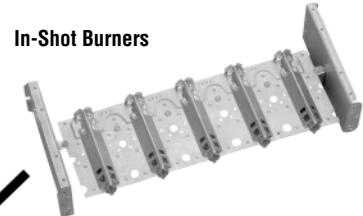
Heat Exchanger



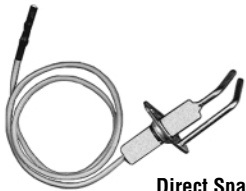
Integrated
Furnace Control



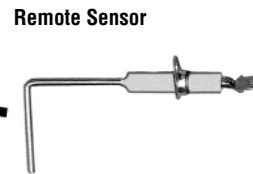
Two-Speed Draft
Inducer Motor



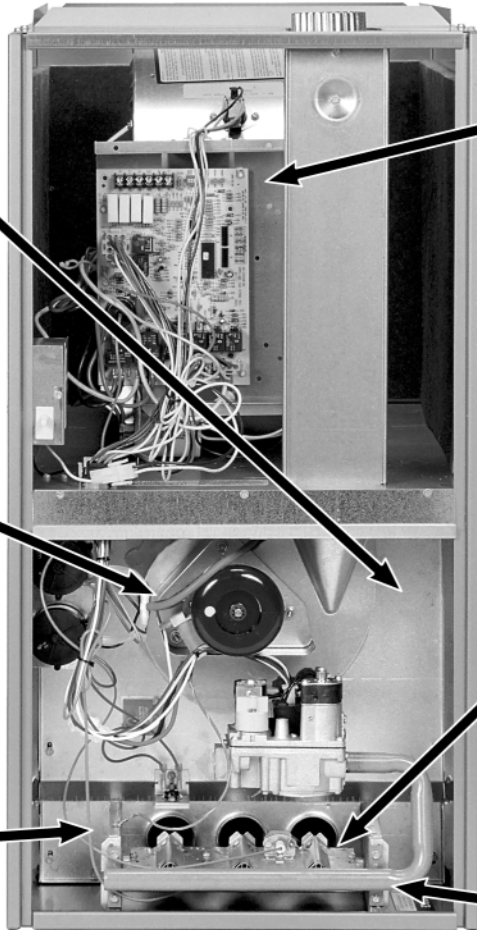
In-Shot Burners



Direct Spark Ignitor



Remote Sensor



STANDARD EQUIPMENT

Completely assembled and wired; 2 speed induced draft blower; high and low pressure switches; 2 stage redundant main gas control; blower compartment door safety switch; solid state time on/time off blower control; limit control; transformer; direct drive multi-speed blower motor. Furnaces are equipped with cooling/heating relay and transformer (40VA) ready for air conditioning applications. (Please note: a thermostat is not included as standard equipment.) Flame sensor diagnostics; fused-protection (secondary), **3rd speed option for continuous fan; common heat/cool terminal.**

NOTE: Furnace is not listed for use with fuels other than natural or L.P. (propane) gas.

The complete terms of limited and other warranties are available at our sales office, or through local installer.

All models can be converted by a qualified Rheem distributor or local service dealer to use L.P. (propane) gas without changing burners. Factory approved kits must be used to convert from natural to L.P. (propane) gas and may be ordered as optional accessories from a Rheem parts distributor.

For L.P. (propane) operation, refer to Conversion Kit Index Form.

NOTE: For natural and L.P. (propane) gas models, direct spark ignition is 100% lockout type.

WARNING
THIS FURNACE IS NOT APPROVED
OR RECOMMENDED
FOR USE IN MOBILE HOMES

BEFORE PURCHASING THIS APPLIANCE, READ IMPORTANT ENERGY COST AND EFFICIENCY INFORMATION AVAILABLE FROM YOUR RETAILER.

PHYSICAL DATA AND SPECIFICATIONS

U.S. AND CANADA MODELS (DOWNFLOW)

MODEL NUMBERS RGLK- SERIES	05EAUER 05NAUER	07EAMER 07NAMER	07EAMGR 07NAMGR	10EAMER 10NAMER	10EBRJR 10NBRJR	12EARJR 12NARJR	15EARJR 15NARJR
High Input–BTU–BTU/Hr [kW] ②	50,000 [15]	75,000 [22]	75,000 [22]	100,000 [29]	100,000 [29]	125,000 [37]	150,000 [44]
Heating Capacity–BTU/Hr [kW] ①	40,360 [12]	61,020 [18]	61,470 [18]	81,600 [24]	81,040 [24]	101,750 [29]	121,550 [35]
Low Input–BTU/Hr [kW]	35,000 [10]	52,500 [15]	52,500 [15]	70,000 [20]	70,000 [20]	87,500 [25]	105,000 [30]
Heating Capacity–BTU/Hr [kW]	28,000 [8]	41,600 [12]	41,600 [12]	56,000 [16]	56,000 [16]	70,000 [20]	84,000 [24]
Heating–Ext. Static Pressure [kPa]	.10 [.025]	.12 [.029]	.12 [.029]	.15 [.037]	.15 [.037]	.20 [.05]	.20 [.05]
Blower (D x W) [mm]	11 x 6 [279 x 152]	11 x 7 [279 x 178]	11 x 7 [279 x 178]	11 x 7 [279 x 178]	11 x 10 [279 x 254]	11 x 10 [279 x 254]	11 x 10 [279 x 254]
Motor H.P.–[W] Speeds–Type	1/2 [373] 4-PSC	1/2 [373] 4-PSC	3/4 [559] 4-PSC	1/2 [373] 4-PSC	3/4 [559] 4-PSC	3/4 [559] 4-PSC	3/4 [559] 4-PSC
Motor Full Load Amps	6.8	7.1	9.5	7.1	9.5	9.5	9.5
Heating Speed–High Fire	MED-LOW	MED-HIGH	MED-LOW	MED-HIGH	MED-HIGH	MED-HIGH	MED-HIGH
Heating Speed–Low Fire	LOW	MED-LOW	LOW	LOW	LOW	LOW	LOW
Cooling Speed	HIGH	HIGH	MED-HIGH	HIGH	HIGH	HIGH	HIGH
Cooling CFM @ .5" [kPa] E.S.P. (Nominal) [L/s]	1200 [566]	1200 [566]	1600 [755]	1200 [566]	2000 [944]	2000 [944]	2000 [944]
Max. E.S.P. (In. W.C.) [kPa]	0.5 [.12]	0.5 [.12]	0.5 [.12]	0.5 [.12]	0.5 [.12]	0.5 [.12]	0.5 [.12]
Temperature Rise Range °F [°C]	25-55 [13.9-30.6]	35-65 [19.4-36.1]	25-55 [13.9-30.6]	45-75 [25.0-41.7]	30-60 [16.7-33.3]	35-65 [19.4-36.1]	50-80 [27.8-44.4]
Max. Outlet Air Temp. °F [°C]	155 [68.3]	165 [78.3]	155 [68.3]	180 [82.2]	180 [82.2]	180 [82.2]	190 [87.7]
Standard Filter–In. [mm]	(1) 14 x 20 [356 x 508]	(2) 12 x 20 [306 x 508]	(2) 12 x 20 [306 x 508]	(2) 12 x 20 [306 x 508]	(2) 14 x 20 [356 x 508]	(2) 14 x 20 [356 x 508]	(2) 14 x 20 [356 x 508]
Approx. Shipping Weight (Lbs.) [kg]	85 [39]	105 [48]	105 [48]	115 [52]	120 [54]	140 [63]	150 [68]
AFUE ①	80.0%	80.0%	80.0%	80.0%	80.0%	80.0%	80.0%

NOTES: All models are 115V, 60HZ, 1Ø. Gas connection size for all models is 1/2" [12.7 mm] N.P.T.

① In accordance with D.O.E. test procedures.

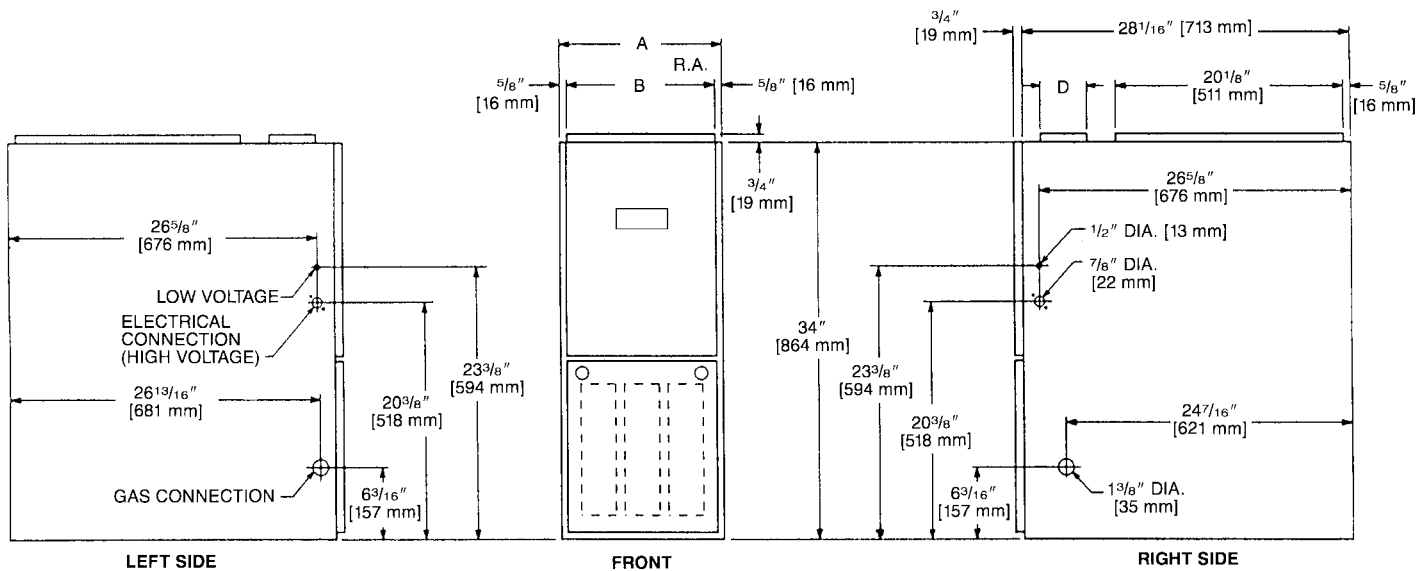
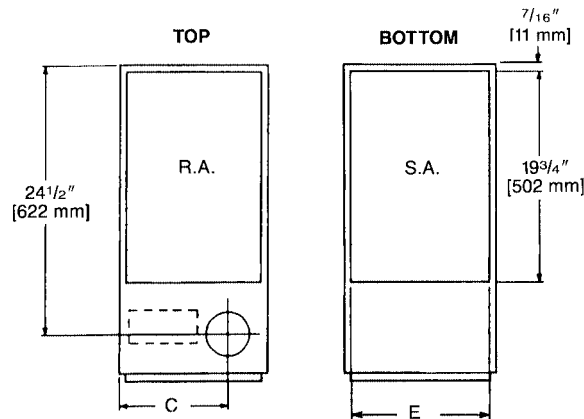
② See Conversion Kit Index for high altitude derate in U.S. applications. For Canadian applications, reference the furnace installation instructions.

MODEL IDENTIFICATION—DOWNFLOW MODELS

R	G	L	K	—	07E	A	M	E	R		
Rheem	Gas Furnace	Downflow	Design Series		Heating Input Designation			Variations	Blower Designation	Heating & Cooling Designation	Fuel Type
					Electric Ignition	Ignition– NO _x Models	Input BTU/HR	A = Std. Cabinet	U = 11 x 6 [279 x 152 mm]	E = 1100-1330 CFM [519-628 L/s]	R = Natural Gas, U.S. and Canadian Standard Furnace
					05E	05N	50,000 [15 kW]	B = Wide Cabinet	M = 11 x 7 [279 x 178 mm]	G = 1450-1750 CFM [684-826 L/s]	
					07E	07N	75,000 [22 kW]		R = 11 x 10 [279 x 254 mm]	J = 1800-2075 CFM [850-979 L/s]	
					10E	10N	100,000 [29 kW]				
					12E	12N	125,000 [37 kW]				
					15E	15N	150,000 [44 kW]				

[] Designates Metric Conversions

DOWNFLOW DIMENSIONS



DIMENSIONS AND CLEARANCE TO COMBUSTIBLE MATERIAL (INCHES) [mm]

MODEL RGLK-	A	B	C	D	E	REDUCED CLEARANCES (IN.) [mm]						SHIP. WGTS. (LBS.) [kg]
						LEFT SIDE	RIGHT SIDE	BACK	TOP	FRONT	VENT	
05	14 [356]	12 ²⁷ / ₃₂ [326]	10 ³ / ₈ [264]	①	13 ¹ / ₈ [333]	0	4 [102] ②	0	1 [25]	3 [76]	6 [152] ③	85 [38.6]
07	17 ¹ / ₂ [445]	16 ¹¹ / ₃₂ [415]	12 ¹ / ₈ [308]	①	16 ⁵ / ₈ [422]	0	3 [76] ②	0	1 [25]	3 [76]	6 [152] ③	105 [47.6]
10 (A)	17 ¹ / ₂ [445]	16 ¹¹ / ₃₂ [415]	12 ¹ / ₈ [308]	①	16 ⁵ / ₈ [422]	0	3 [76] ②	0	1 [25]	3 [76]	6 [152] ③	115 [52.2]
10 (B)	21 [533]	19 ²⁷ / ₃₂ [504]	13 ⁷ / ₈ [352]	①	20 ¹ / ₈ [511]	0	0	0	1 [25]	3 [76]	6 [152] ③	120 [54.4]
12	24 ¹ / ₂ [622]	23 ¹¹ / ₃₂ [593]	15 ⁵ / ₈ [397]	①	23 ⁵ / ₈ [600]	0	0	0	1 [25]	3 [76]	6 [152] ③	140 [63.5]
15	24 ¹ / ₂ [622]	23 ¹¹ / ₃₂ [593]	15 ⁵ / ₈ [397]	①	23 ⁵ / ₈ [600]	0	0	0	1 [25]	3 [76]	6 [152] ③	150 [68]

NOTES: ① May require a 3" [76 mm] to 4" [102 mm] or 3" [76 mm] to 5" [127 mm] adapter.

② May be 0" [0 mm] with type B vent.

③ May be 1" [25 mm] with type B vent.

Furnaces must be vented in accordance with the National Fuel Gas Code, ANSI Z223.1 and/or Can/CGA-B149 Installation Codes and in accordance with local codes.

[] Designates Metric Conversions

BLOWER PERFORMANCE DATA—DOWNFLOW MODELS

MODEL NUMBER RGLK-SERIES	BLOWER SIZE [mm]	MOTOR H.P. [W]	BLOWER SPEED	CFM [L/s] AIR DELIVERY EXTERNAL STATIC PRESSURE INCHES [kPa] WATER COLUMN							
				.1 [.02]	.2 [.05]	.3 [.07]	.4 [.10]	.5 [.12]	.6 [.15]	.7 [.17]	
				05EAUER	11 x 6 [279 x 152]	1/2 [373]	LOW MED-LO MED-HI HIGH	655 [309] 975 [460] 180 [557] 1335 [630]	630 [297] 943 [445] 1140 [538] 1290 [608]	600 [283] 915 [432] 1105 [521] 1250 [590]	565 [266] 886 [418] 1067 [503] 1202 [567]
07EAMER	11 x 7 [279 x 178]	1/2 [373]	*LOW MED-LO MED-HI HIGH	910 [429] 1074 [507] 1229 [580] 1409 [665]	887 [418] 1054 [497] 1207 [569] 1385 [653]	863 [407] 1034 [488] 1184 [558] 1361 [642]	839 [396] 1007 [475] 1159 [547] 1329 [627]	814 [384] 979 [462] 1134 [535] 1297 [612]	776 [366] 944 [455] 1099 [518] 1260 [594]	738 [348] 908 [428] 1063 [501] 1223 [577]	
07EAMGR	11 x 7 [279 x 178]	3/4 [559]	LOW MED-LO MED-HI HIGH	1180 [557] 1438 [678] 1730 [816] 1842 [869]	1170 [552] 1420 [670] 1697 [800] 1805 [851]	1153 [544] 1400 [660] 1660 [783] 1761 [831]	1141 [538] 1380 [651] 1620 [764] 1713 [808]	1125 [531] 1348 [636] 1575 [743] 1664 [785]	1108 [523] 1320 [623] 1530 [722] 1615 [762]	1083 [511] 1281 [604] 1480 [698] 1560 [736]	
10EAMER	11 x 7 [279 x 178]	1/2 [373]	LOW MED-LO MED-HI HIGH	895 [422] 1052 [496] 1238 [584] 1383 [652]	874 [412] 1033 [487] 1217 [574] 1366 [644]	852 [402] 1013 [478] 1196 [564] 1348 [636]	825 [389] 991 [467] 1169 [551] 1317 [621]	798 [376] 968 [457] 1143 [539] 1286 [607]	766 [362] 930 [439] 1094 [516] 1245 [587]	734 [346] 891 [420] 1044 [492] 1203 [567]	
10EBRJR	11 x 10 [279 x 254]	3/4 [559]	LOW MED-LO MED-HI HIGH	1374 [648] 1709 [806] 2132 [1006] 2362 [1114]	1356 [640] 1686 [795] 2085 [984] 2300 [1085]	1339 [632] 1663 [784] 2038 [961] 2237 [1055]	1323 [624] 1635 [771] 1988 [938] 2173 [1025]	1286 [607] 1607 [758] 1937 [914] 2108 [994]	1249 [589] 1562 [737] 1882 [888] 2036 [960]	1212 [572] 1516 [715] 1827 [862] 1964 [926]	
12EARJR	11 x 10 [279 x 254]	3/4 [559]	LOW MED-LO MED-HI HIGH	1315 [620] 1618 [763] 2065 [974] 2275 [1074]	1292 [609] 1597 [753] 2025 [956] 2219 [1047]	1269 [599] 1576 [743] 1984 [936] 2163 [1021]	1250 [590] 1552 [732] 1938 [915] 2103 [992]	1231 [581] 1528 [721] 1891 [892] 2042 [964]	1194 [563] 1486 [701] 1824 [861] 1982 [935]	1157 [546] 1443 [681] 1756 [829] 1921 [907]	
15EARJR	11 x 10 [279 x 254]	3/4 [559]	LOW MED-LO MED-HI HIGH	1300 [614] 1675 [791] 2105 [993] —	1280 [604] 1650 [779] 2075 [979] 2340 [1104]	1230 [580] 1620 [765] 2035 [960] 2290 [1081]	1205 [569] 1570 [741] 1990 [939] 2215 [1045]	1170 [552] 1545 [729] 1955 [923] 2145 [1012]	1115 [526] 1485 [701] 1900 [897] 2080 [982]	1030 [486] 1425 [673] 1815 [857] 1995 [942]	

NOTES: *Not to be used as a low stage heating speed.
Data compiled with factory filters installed.
See Form Number C11-206 for MultiFlex® coil data.

[] Designates Metric Conversions

GENERAL TERMS OF LIMITED WARRANTY

Rheem will furnish a replacement for any part of this product which fails in normal use and service within the applicable period stated, in accordance with the terms of the limited warranty.

For Complete Details of the Limited Warranty, Including Applicable Terms and Conditions, See Your Local Installer or Contact the Manufacturer for a Copy.

Gas Heat Exchanger Limited Warranty Twenty (20) Years
*Any Other Part.....Five (5) Years

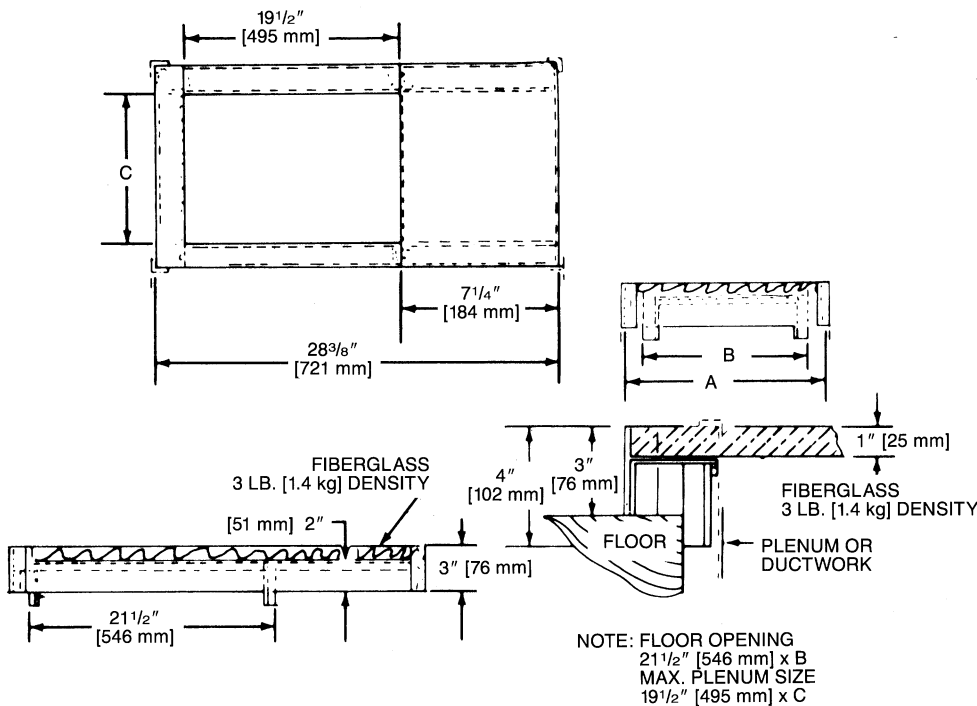
*This five year limited warranty is applicable only to single-phase products installed in residential applications on or after January 1, 2001.

ACCESSORIES—DOWNFLOW

DOWNFLOW WARNING: Unit design is certified for installation on non-combustible floor. A special factory supplied combustible floor sub-base is required when installing on a combustible floor. Failure to install the sub-base may result in fire, property damage and personal injury.

COMBUSTIBLE FLOOR BASE DIMENSIONS

COMBUSTIBLE FLOOR BASE	USE WITH FURNACE SIZES	A IN. [mm]	B IN. [mm]	C IN. [mm]
RXGC-B14	RGLK-05	14 ¹ / ₂ [368]	13 ¹ / ₄ [337]	11 ¹ / ₄ [286]
RXGC-B17	RGLK-07, RGLK-10(-)A	18 [457]	16 ³ / ₄ [425]	14 ³ / ₄ [451]
RXGC-B21	RGLK-10(-)B	21 ¹ / ₂ [546]	20 ¹ / ₄ [514]	18 ¹ / ₄ [464]
RXGC-B24	RGLK-12, RGLK-15	25 [635]	23 ³ / ₄ [603]	21 ³ / ₄ [552]



RXGF-CC*

FILTER RACK—Downflow top return mount.

NOTE: Filter racks are shipped without filters.

*Filters available through PROSTOCK®.

DOWNFLOW FILTER SIZES				
FURNACE WIDTH IN. [mm]	INPUT BTUH [kW]	SIZE IN. [mm]	QUANTITY	
14 [356]	45 [13.19] & 50 [14.65]	14 [356] x 20 [508]	1	
17 ¹ / ₂ [445]	67 [19.64], 75 [21.98] & 100 [29.31]	12 [305] x 20 [508]	1	
21 [533]	100 [29.31]	12 [305] x 20 [508]	2	
24 ¹ / ₂ [622]	125 [36.63] & 150 [44.0]	14 [356] x 20 [508]	2	

[] Designates Metric Conversions

RXPF-F01 and F02

FOSSIL FUEL KIT—is for use with Rheem Heat Pumps and Criterion II warm air furnaces. RXPF-F02 meets TVA requirements.

FOR HIGH ALTITUDES:

OPTION CODE FOR

HIGH ALTITUDE: US & Canada – None required for high altitudes.

HIGH ALTITUDE CONVERSION KITS:

US & Canada – None required for high altitudes.

CAUTION: Always follow National Fuel Gas Code (NFGC) guidelines when converting furnaces for high altitudes.

High altitude option codes are no longer required for these models. However, the burner orifice size needs to be recalculated and verified at elevations above 2000 ft. See Installation Instructions for more information.

NOTE: For Canadian installations only, an optional derate (manifold gas pressure reduction) method may be used to adjust the furnace for altitude. See Installation Instructions for more information. This optional method may **NOT** be used for U.S. installations.

NOTES

Before proceeding with installation, refer to installation instructions packaged with each model, as well as complying with all Federal, State, Provincial, and Local codes, regulations, and practices.

**RHEEM
AIR CONDITIONING
DIVISION**

5600 Old Greenwood Road, Fort Smith, Arkansas 72908



"In keeping with its policy of continuous progress and product improvement, Rheem reserves the right to make changes without notice."