

## MEDIA AIR CLEANERS/MEDIA FILTERS

High efficiency media air cleaners offer a significant improvement over one inch throw-away filters. They trap and filter to reduce major pollutants, such as dust and pollen from the air passing through the heating and cooling system. Deep pleated filters maximize surface area and increase life of filter.

MERV stands for Minimum Efficiency Reporting Value; a rating determined by testing in accordance with ASHRAE 52.2 procedures. The tests rate the ability to filter particles ranging from 0.3 to 10 microns in size. A higher MERV rating indicates a greater ability to filter these pollutants.



### Rheem/Ruud Exact Fit Media Air Cleaners – Air Handlers

- Exact fit for Rheem, Ruud, and WeatherKing residential air handlers; see equipment specification sheets for cross-reference
- Available in MERV 10 and MERV 13 options
- Neutra green paint matches equipment
- 5-year limited warranty



PART NO	HOUSING OVERALL OUTSIDE DIMENSIONS HEIGHT (IN)	HOUSING OVERALL OUTSIDE DIMENSIONS DEPTH (IN)	HOUSING OVERALL OUTSIDE DIMENSIONS WIDTH (IN)	MERV RATING OF INCLUDED MEDIA	MAXIMUM RATED AIR FLOW (CFM)	REPLACEMENT MEDIA
RXHF-E17AM10	17-15/32	21-1/2	6-3/4	10	1400	540010
RXHF-E17AM13	17-15/32	21-1/2	6-3/4	13	1400	540016
RXHF-E21AM10	21	21-1/2	6-3/4	10	1800	540012
RXHF-E21AM13	21	21-1/2	6-3/4	13	1800	540018
RXHF-E24AM10	24-15/32	21-1/2	6-3/4	10	2000	540014
RXHF-E24AM13	24-15/32	21-1/2	6-3/4	13	2000	540020



### Rheem/Ruud Exact Fit Media Air Cleaners – Gas Furnaces

- Exact fit for Rheem, Ruud, and WeatherKing furnaces; see equipment specification sheets for cross-reference
- Neutra green paint matches equipment
- 5-year limited warranty



PART NO	HOUSING OVERALL OUTSIDE DIMENSIONS HEIGHT (IN)	HOUSING OVERALL OUTSIDE DIMENSIONS DEPTH (IN)	HOUSING OVERALL OUTSIDE DIMENSIONS WIDTH (IN)	MERV RATING OF INCLUDED MEDIA	MAXIMUM RATED AIR FLOW (CFM)	REPLACEMENT MEDIA
RXGF-E17AM10	17-15/32	28-1/2	6-3/4	10	1800	540011
RXGF-E21AM10	21	28-1/2	6-3/4	10	2000	540013
RXGF-E24AM10	24-15/32	28-1/2	6-3/4	10	2000	540015



### PROTECH Media Air Cleaners

- Fits a wide variety of equipment
- Platinum metallic paint
- Rugged cabinet construction



PART NO	HOUSING OVERALL OUTSIDE DIMENSIONS HEIGHT (IN)	HOUSING OVERALL OUTSIDE DIMENSIONS DEPTH (IN)	HOUSING OVERALL OUTSIDE DIMENSIONS WIDTH (IN)	MERV RATING OF INCLUDED MEDIA	MAXIMUM RATED AIR FLOW (CFM)	REPLACEMENT MEDIA
84-25050-06	16-1/4	24-7/8	7-1/8	8	1400	54-25051-04
84-25050-05	20-1/4	21-3/8	7-1/8	8	1400	54-25051-03
84-25050-01	20-1/4	24-7/8	7-1/8	8	2000	54-25051-01

**MEDIA AIR CLEANERS/MEDIA FILTERS**



**PROTECH Media Air Cleaner – Right Angle**

- Quick and easy mounting for installations that require a 90 degree duct adapter
- Platinum metallic paint
- Filters angled to further maximize surface area
- Rugged cabinet construction



PART NO	HOUSING OVERALL OUTSIDE DIMENSIONS HEIGHT (IN)	HOUSING OVERALL OUTSIDE DIMENSIONS DEPTH (IN)	HOUSING OVERALL OUTSIDE DIMENSIONS WIDTH (IN)	MERV RATING OF INCLUDED MEDIA	MAXIMUM RATED AIR FLOW (CFM)	REPLACEMENT MEDIA
84-25050-03	23-1/2	25-5/8	15-1/2	8	2000	54-25051-01



**Rheem/Ruud Replacement Media Filters**

Custom sized filters for replacement of exact fit media air cleaners.



PART NO	MERV RATING	RATED AIR FLOW (CFM)	MEDIA DIM NOMINAL WIDTH (IN)	MEDIA DIM NOMINAL LENGTH (IN)	MEDIA DIM NOMINAL THICKNESS (IN)	MEDIA DIM ACTUAL WIDTH (IN)	MEDIA DIM ACTUAL LENGTH (IN)	MEDIA DIM ACTUAL THICKNESS (IN)	CROSS REFERENCE FITS MODELS	CASE QTY	CASE REQ
540010	10	1400	17-1/2	21	4-1/2	17-1/4	20-3/4	4-3/8	RXHF-E17AM10	4	Yes
540012	10	1800	21	21	4-1/2	20-3/4	20-3/4	4-3/8	RXHF-E21AM10	4	Yes
540014	10	2000	21	24-1/2	4-1/2	20-3/4	24-1/4	4-3/8	RXHF-E24AM10	4	Yes
540013	10	2000	21	28	4-1/2	20-3/4	27-1/2	4-3/8	RXGF-E21AM10	4	Yes
540011	10	1800	17-1/2	28	4-1/2	17-1/4	27-3/4	4-3/8	RXGF-E17AM10	4	Yes
540015	10	2000	24-1/2	28	4-1/2	24-5/32	27-3/4	4-3/8	RXGF-E24AM10	4	Yes
540016	13	1400	17-1/2	21	4-1/2	17-1/4	20-3/4	4-3/8	RXHF-E17AM13	4	Yes
540018	13	1800	21	21	4-1/2	20-3/4	20-3/4	4-3/8	RXHF-E21AM13	4	Yes
540020	13	2000	21	24-1/2	4-1/2	20-3/4	24-1/4	4-3/8	RXHF-E24AM13	4	Yes



**PROTECH Replacement Media Filters**

- Fits most popular brands
- High dust-holding capacity resulting in longer service life
- Moisture resistant synthetic media



PART NO	MERV RATING	RATED AIR FLOW (CFM)	MEDIA DIM NOMINAL WIDTH (IN)	MEDIA DIM NOMINAL LENGTH (IN)	MEDIA DIM NOMINAL THICKNESS (IN)	MEDIA DIM ACTUAL WIDTH (IN)	MEDIA DIM ACTUAL LENGTH (IN)	MEDIA DIM ACTUAL THICKNESS (IN)	CROSS REFERENCE FITS MODELS	CASE QTY	CASE REQ
54-25051-01	8	2000	20	25	5	19-3/4	24-1/4	5	84-25050-01, 84-25050-03	3	Yes
54-25051-02	8	1400	16	25	3	15-3/4	24-1/4	3	84-25050-06	6	Yes
54-25051-10	10	1600	20	25	5	19-3/4	24-5/8	4-1/4	Honeywell FC100A1037	3	Yes
54-25051-11	10	1000	16	20	5	15-3/4	19-3/4	4-1/4	Honeywell FC100A1003	3	Yes
54-25051-12	10	1200	16	25	5	15-3/4	24-1/4	5	Honeywell FC100A1029	3	Yes
54-25051-13	10	1400	20	20	5	19-3/4	20-3/4	5	Honeywell FC100A1011, 84-25050-05	3	Yes

## MEDIA AIR CLEANERS/MEDIA FILTERS



### Trion Air Bear Replacement Media Filters



PART NO	MERV RATING	RATED AIR FLOW (CFM)	MEDIA DIM NOMINAL WIDTH (IN)	MEDIA DIM NOMINAL LENGTH (IN)	MEDIA DIM NOMINAL THICKNESS (IN)	MEDIA DIM ACTUAL WIDTH (IN)	MEDIA DIM ACTUAL LENGTH (IN)	MEDIA DIM ACTUAL THICKNESS (IN)	CROSS REFERENCE FITS MODELS	CASE QTY	CASE REQ
255649-102	8	2000	20	25	5	19-3/4	24-1/4	5	84-25050-01, 84-25050-03	3	Yes
54-25051-03	8	1400	20	20	5	19-3/4	20-3/4	5	Honeywell FC100A1011, 84-25050-05	4	Yes
54-25051-04	8	1400	16	25	5	15-3/4	24-1/4	5	84-25050-06	3	Yes



### Emerald Air Collapsible Replacement Media Filters



- Durable, Tear Resistant Filter Media – Extremely durable media resists tearing or puncturing during the installation process making filter replacement quick and easy
- String Pleat Spacers – Unlike some competitive brands that use hot melt glue to hold the pleats together, Emerald Air uses string pleat spacers which keep the pleats evenly spaced so that the plastic pleat spacers can be installed in a fast and expedient manner
- Patented Gradient Density Media Technology – Emerald Air media is manufactured to exacting specifications using a patented gradient density technology; the result is superior efficiency, low resistance to airflow and long service life; the dual layer composite media contains ultra fine diameter synthetic fibers, electrostatically charged to enable the capture of even very small particles
- Packaging that Sells – Carton graphics are crisp, bold and effectively present the features and benefits of the filter inside; the heavy duty corrugated box will stand up to rough handling and will even function as a shipping carton

PART NO	MERV RATING	RATED AIR FLOW (CFM)	MEDIA DIM NOMINAL WIDTH (IN)	MEDIA DIM NOMINAL LENGTH (IN)	MEDIA DIM NOMINAL THICKNESS (IN)	MEDIA DIM ACTUAL WIDTH (IN)	MEDIA DIM ACTUAL LENGTH (IN)	MEDIA DIM ACTUAL THICKNESS (IN)	CROSS REFERENCE FITS MODELS	CASE QTY	CASE REQ
201-13RFM	13	2000	18	24	6	18	24-1/4	6	Aprilaire/Space-Gard 2200 & 2250	12	Yes
401-13RFM	13	2000	16	27	6	16	27-1/8	6	Aprilaire/Space-Gard 2400	12	Yes



### PROTECH Return Grille Media Filters



- Mounts in most third-party return filter grilles
- Provides high efficiency alternative to one inch filters
- Easy installation; pre-assembled filter easily inserts into and out of existing return grille
- Exclusive frame design nests properly into place
- Low pressure drop

PART NO	MERV RATING	RATED AIR FLOW (CFM)	MEDIA DIM NOMINAL WIDTH (IN)	MEDIA DIM NOMINAL LENGTH (IN)	MEDIA DIM NOMINAL THICKNESS (IN)	MEDIA DIM ACTUAL WIDTH (IN)	MEDIA DIM ACTUAL LENGTH (IN)	MEDIA DIM ACTUAL THICKNESS (IN)	CROSS REFERENCE FITS MODELS	CASE QTY	CASE REQ
540022	10	1400	20	25	4	19-3/4	24-3/4	4-3/8	Honeywell FC40R1011	5	Yes
540023	10	1800	20	30	4	19-3/4	29-3/4	4-3/8	Honeywell FC40R1029	5	Yes
540024	8	1200	16	25	2	15-3/4	24-3/4	2	Honeywell FC20R1625	5	Yes
540025	8	1200	20	20	2	19-3/4	18-1/2	2	Honeywell FC20R2020	5	Yes
540026	8	1400	20	25	2	19-3/4	24-3/4	2	Honeywell FC20R2025	5	Yes
540027	8	1800	20	30	2	19-3/4	29-3/4	2	Honeywell FC20R2030	5	Yes

## RHEEM/RUUD WHOLE-HOUSE HEPA AIR CLEANER



The Whole-House HEPA Air Cleaner provides powerful, 3-stage filtration to deliver the cleanest air possible throughout the home. HEPA stands for High Efficiency Particle Arresting, which is the standard that achieves 99.9% air filtration.



Ninety-nine percent of particles in the air are invisible to the naked eye, including pet dander, certain bacteria, pollens and more. Standard one inch air filters trap less than 1% of those invisible particles, allowing them to re-circulate in the home. For the ultimate in clean air, count on the Whole-House HEPA Air Cleaner.

- Three-filter system:
  - Activated carbon filter for odors
  - High efficiency pleated pre-filter extends HEPA filter life
  - HEPA filter traps at least 99.97% of the 0.3 micron particles that pass through it
- Requires no maintenance except periodic media filter replacement
- Includes four isolation straps
- Rugged steel cabinet
- Quiet operation
- 5-year limited warranty

PART NO	DUCT CONFIGURATION	MAXIMUM RATED AIR FLOW (CFM)	HOUSING OVERALL DIMENSIONS (IN)	AIR OPENING INLET DIMENSIONS (IN)	AIR OPENING OUTLET DIMENSIONS (IN)
RXIC-A01A	Bypass	400	25-1/2 x 19 x 12-1/2	4 x 10	4 x 10

## ELECTRONIC AIR CLEANERS

Electronic Air Cleaners work by placing a charge on airborne particles utilizing the principle of two-stage electrostatic precipitation and then collecting them like a magnet. They remove small, invisible particles that bypass standard air filters. Air is drawn by the ventilating system/blower through a washable metal mesh pre-filter, which traps large dust particles. The remaining particles (some as small as 0.01 microns) pass into a strong electrical field (ionizing section) where the particulate receives an electrical charge. The charged particles are then trapped into a negatively charged series of equally spaced parallel plates. The air, now cleaned of up to 95% of its impurities, is returned to the home.

- Easy to maintain; no replacement needed, simply wash the collection plates
- Traps and filters to reduce pollutants, such as dust, smoke, smog particles, mold spores and pet dander from the air passing through the heating and cooling systems
- Low pressure drop



### Rheem/Ruud Electronic Air Cleaners

- Includes optional post-filters for higher efficiency
- LED indicator for cell cleaning
- Convertible to 230V power supply with kit 203365A
- Airflow sensor included; no interlock required
- 5-year limited warranty



PART NO	MAXIMUM RATED AIR FLOW (CFM)	HOUSING OVERALL OUTSIDE DIMENSIONS HEIGHT (IN)	HOUSING OVERALL OUTSIDE DIMENSIONS DEPTH (IN)	HOUSING OVERALL OUTSIDE DIMENSIONS WIDTH (IN)	INPUT VOLTAGE (V)	POWER CONNECTION TYPE
RXIE-A14A	1400	19-9/16	25-1/2	6-3/4	120	Cord connected
RXIE-A20A	2000	23-9/16	25-1/2	6-3/4	120	Cord connected



### PROTECH Electronic Air Cleaners

- Optional charcoal pre-filter available for additional odor control
- Airflow sensor included; no interlock required
- Rugged cabinet construction



PART NO	MAXIMUM RATED AIR FLOW (CFM)	HOUSING OVERALL OUTSIDE DIMENSIONS HEIGHT (IN)	HOUSING OVERALL OUTSIDE DIMENSIONS DEPTH (IN)	HOUSING OVERALL OUTSIDE DIMENSIONS WIDTH (IN)	INPUT VOLTAGE (V)	POWER CONNECTION TYPE
84-25052-07	1400	16-29/32	24-7/8	7-1/8	120	Cord connected
84-25052-09	1400	20-29/32	21-3/8	7-1/8	120	Cord connected
84-25052-08	2000	20-29/32	24-7/8	7-1/8	120	Cord connected

## UV DEVICES

Ultraviolet (UV) energy producing devices are extremely effective as germicidal devices to control microbial pollutants, including mold spores and bacteria. The UV-C wavelength physically breaks down and destroys cell walls of organisms exposed to the energy.

Common applications for UV-C systems include protection against microbial growth on indoor evaporator coils, as well as control of airborne microbial pollutants passing through the ductwork.

CAUTION: UV energy can pose a risk of eye and skin damage. Installers should minimize the risk of UV exposure to equipment owners and service personnel by such methods as safety interlocks and appropriate placement of UV producing devices within the HVAC system.

### Rheem/Ruud UV Devices



#### RXIU-A01A UV Device (Coil Treatment System)

- Remote mount bulb and ballast allow for flexible installation in any application
- Ballast can be set to run continuously or to cycle – extending bulb life
- Shield allows installer to direct UV energy away from access panels for safety and onto evaporator coil
- Can be installed on exterior duct or on interior surfaces
- Adjustable mounting bracket allows the UV device to be installed in tight locations
- Exterior mounting requires little clearance, so the UV device can be installed in closets and tight spaces.
- Indicator window allows safe viewing of lamp operation
- No ozone production
- 5-year limited warranty



PART NO	TYPICAL APPLICATION	MOUNTING LOCATION	MOUNTING TYPE	BASE SIZE W x H x D (IN)	INSERTION DEPTH (IN)	VOLTAGE (V)	ELECTRICAL CONNECTIONS	BULB WATTAGE (W)	NUMBER OF BULBS	REPLACEMENT BULB
RXIU-A01A	Coil Surface	Coil	Internal/External	2-3/4 x 4-3/32 x 2-11/16	14	24	Pigtail leads	10	1	864037



#### RXIU-A02A UV Device (Coil or Air Treatment)

- Easy and economical lamp replacement
- Sealed unit prevents accidental installer/homeowner contact with high voltage and UV
- Safety interlock prevents lamp from lighting unless base is correctly mounted on duct
- Lamp light indicator to safely confirm lamp operation
- No ozone production
- 5-year limited warranty



PART NO	TYPICAL APPLICATION	MOUNTING LOCATION	MOUNTING TYPE	BASE SIZE W x H x D (IN)	INSERTION DEPTH (IN)	VOLTAGE (V)	ELECTRICAL CONNECTIONS	BULB WATTAGE (W)	NUMBER OF BULBS	REPLACEMENT BULB
RXIU-A02A	Coil Surface/ Air Treatment	Coil/Return	External	7 x 7 x 4	14-7/8	120	Cord connected	36	1	864038



#### RXIU-A03A UV Device (Air Treatment)

- Easy and economical lamp replacement
- Sealed unit prevents accidental installer/homeowner contact with high voltage and UV
- Safety interlock prevents lamp from lighting unless base is correctly mounted on duct
- Lamp light indicator to safely confirm lamp operation
- Control algorithm determines optimal UV lamp usage
- LED shows bulb life and replacement
- Reduced power consumption and extended bulb life
- Automatic brownout and high temperature protection for UV lamps
- Integrated airflow sensor to monitor air flowing through ductwork
- Dual-purpose reset button; commands lamp on with a single one-second push; resets internal lamp run-time timer after bulb replacement with extended five-second hold
- No ozone production
- 5-year limited warranty



PART NO	TYPICAL APPLICATION	MOUNTING LOCATION	MOUNTING TYPE	BASE SIZE W x H x D (IN)	INSERTION DEPTH (IN)	VOLTAGE (V)	ELECTRICAL CONNECTIONS	BULB WATTAGE (W)	NUMBER OF BULBS	REPLACEMENT BULB
RXIU-A03A	Air Treatment	Return	External	10 x 8-1/2 x 4	14-7/8	120	Cord connected	36	2	864038

**UV DEVICES**

**Lumalier UV Devices**



**ADPL136 UV Device (Coil or Air Treatment)**



- Sealed unit prevents accidental installer/homeowner contact with high voltage and ultraviolet rays
- Safety interlock prevents lamp from lighting unless base is correctly mounted on duct
- Viewport allows safe viewing of UV lamp operation
- No ozone production
- 5-year limited warranty on fixture and ballast; 1-year limited warranty on lamp

PART NO	TYPICAL APPLICATION	MOUNTING LOCATION	MOUNTING TYPE	BASE SIZE W x H x D (IN)	INSERTION DEPTH (IN)	VOLTAGE (V)	ELECTRICAL CONNECTIONS	BULB WATTAGE (W)	NUMBER OF BULBS	REPLACEMENT BULB
ADPL136	Coil Surface/ Air Treatment	Coil/Return	External	5-1/2 x 7-3/4 x 3	16-1/2	120	Cord connected	36	1	864026



**ADPL236 UV Device (Coil or Air Treatment)**



- Sealed unit prevents accidental installer/homeowner contact with high voltage and ultraviolet rays
- Safety interlock prevents lamp from lighting unless base is correctly mounted on duct
- Viewport allows safe viewing of UV lamp operation
- No ozone production
- 5-year limited warranty on fixture and ballast; 1-year limited warranty on lamp

PART NO	TYPICAL APPLICATION	MOUNTING LOCATION	MOUNTING TYPE	BASE SIZE W x H x D (IN)	INSERTION DEPTH (IN)	VOLTAGE (V)	ELECTRICAL CONNECTIONS	BULB WATTAGE (W)	NUMBER OF BULBS	REPLACEMENT BULB
ADPL236	Coil Surface/ Air Treatment	Coil/Return	External	14-5/8 x 7-1/4 x 3	16-1/2	120	Cord connected	36	2	864026



**PCOGRID for Lumalier ADPL Series**



Optional PCO grid for ADPL136 (1 required) and ADPL236 (2 required) takes advantage of Photo-catalytic oxidation (PCO) process to effectively destroys volatile organic compounds (VOCs) that create unpleasant odors including paints, cleaning supplies, cooking smells and other gases.

PART NO	DESCRIPTION
PCOGRID	TiO2 Grid for PCO Appl to ADPL Series

## WHOLE-HOUSE HUMIDIFIERS

Recommended indoor humidity is between 30% & 50% — more or less can increase the likelihood of bacteria, virus, fungus and mites. Air that is too dry can act like a giant sponge, soaking moisture up from everything that it touches in the home (woodwork, wood floors and furnishings) not to mention symptoms of dry skin, chapped lips, dry nasal passages and static electricity. Advantages of humidification include:

- Adding humidity will reduce energy costs — occupants are more comfortable at lower thermostat settings
- Reduces static electricity and contributes to the well-being of pets and indoor plants
- Protects wooden floors, cabinets and furnishings
- Automatic water supply – whole-house humidifiers are connected directly to the water supply and do not require manual refilling

HOME SIZE (SQ FT)	TIGHT HOUSE (GPD)	AVERAGE HOUSE (GPD)	LOOSE HOUSE (GPD)
1500	3.0	10.0	16.5
2000	5.0	14.0	24.0
2500	7.5	19.0	30.5
3000	10.0	23.5	37.5
4000	14.5	33.0	51.5

Calculations based on the following assumptions:

- Construction types:
  - Tight House: Well insulated with vapor barriers, tight storm doors and windows; dampered fireplace; air change rate of 0.50 changes per hour
  - Average House: Insulated with a dampered fireplace; no vapor barriers; loose storm doors and windows; Air change rate of 1.0 changes per hour
  - Loose House: Constructed before 1930; little or no insulation; no storm doors or windows, no weather stripping or vapor barriers; no dampering of fireplaces; air change rate as high as 1.5 changes per hour
- Indoor temperature of 70°F and 35% relative humidity
- Outdoor temperature of 20°F and 70% relative humidity
- 8 foot ceiling height
- Internal moisture gain of 1 lb/hour
- Furnace on-time of 70%

### Rheem/Ruud Whole-House Humidifiers

#### Humidifiers – Steam



Steam humidifiers work by warming water in a tank which is turned into steam and injected into the ductwork. Advantages of steam humidification include:

- Moisture on Demand – Produces steam independent of equipment operation, so the home gets moisture whenever it is needed
- Eco-Friendly – Uses up to 70% less water while delivering more moisture than traditional whole-house humidifiers
- While other humidifiers rely on moisture-filled pads that can be susceptible to bacteria growth in the water and the airstream, the unit delivers the cleanest form of humidification
- Minimal Maintenance – Automatic self cleaning cycle; manual cleaning once a year with soap and water and the rest of the time it cleans itself automatically
- Includes self-piercing saddle valve, solenoid valve, and humidistat (12 gallon model includes Digital IAQ Control)



PART NO	HUMIDIFIER TYPE	DUCT MOUNTING LOCATION	UNIT DIMENSIONS W x H x D (IN)	DUCT OPENING DIAMETER (IN)	INPUT VOLTAGE (V)	NOMINAL CAPACITY (GPD)	HUMIDISTAT CONTROLLER INCLUDED	REPLACEMENT PAD
RXIH-AS06A	Steam	Supply	11-1/4 x 9 x 19	1-3/4	120	6	H8908ASPST	—
RXIH-AS09A	Steam	Supply	11-1/4 x 9 x 19	1-3/4	120	9	H8908ASPST	—
RXIH-AS12A	Steam	Supply	11-1/4 x 9 x 19	1-3/4	120	12	FXIA-A01A	—

#### Humidifiers – Flow-Through Bypass



Flow-Through humidification directs the airflow from the ductwork to pass through a moisture filled pad, so the air stream picks up moisture evenly and distributes it throughout the home.

- Includes self-piercing saddle valve, solenoid, and humidistat
- 5-year limited warranty



PART NO	HUMIDIFIER TYPE	DUCT MOUNTING LOCATION	UNIT DIMENSIONS W x H x D (IN)	DUCT OPENING DIM W x H x D (IN)	INPUT VOLTAGE (V)	NOMINAL CAPACITY (GPD)	HUMIDISTAT CONTROLLER INCLUDED	REPLACEMENT PAD
RXIH-AB12A	Flow-Thru Bypass	Return or Supply	12 x 9-1/8 x 13-9/16	9-5/16 x 9-7/16	24	14.5	H8908ASPST	HC22E1003
RXIH-AB17A	Flow-Thru Bypass	Return or Supply	13-9/16 x 9-1/4 x 16-3/4	9-3/4 x 12-5/8	24	18.1	H8908ASPST	HC26E1004

## WHOLE-HOUSE HUMIDIFIERS

### PROTECH Whole-House Humidifiers

#### Humidifiers – Power



Power humidification uses an integral fan to blow air directly over a moisture filled pad into the air stream. Ideal for heat pump applications.

- Includes self-piercing saddle valve, solenoid valve, and humidistat
- 2-year limited warranty



PART NO	HUMIDIFIER TYPE	DUCT MOUNTING LOCATION	UNIT DIMENSIONS W x H x D (IN)	DUCT OPENING DIMENSIONS W x H x D (IN)	INPUT VOLTAGE (V)	CAPACITY @ 140°F SUPPLY/ RETURN (GPD)	CAPACITY @ 120°F SUPPLY/ RETURN (GPD)	CAPACITY @ 100°F SUPPLY/ RETURN (GPD)	HUMIDISTAT CONTROLLER INCLUDED	REPLACEMENT PAD
84-25054-01	Power	Supply	13 x 11-1/2 x 18-3/4	12-1/4 x 15-1/4	120	24.0 / -	19.0 / -	14.5 / -	45-25055-99	84-25055-01

#### Humidifiers – Flow-Through Bypass



Flow-Through humidification directs the airflow from the ductwork to pass through a moisture filled pad, so the air stream picks up moisture evenly and distributes it throughout the home.

- Includes self-piercing saddle valve, solenoid valve, and humidistat
- 2-year limited warranty



PART NO	HUMIDIFIER TYPE	DUCT MOUNTING LOCATION	UNIT DIMENSIONS W x H x D (IN)	DUCT OPENING DIMENSIONS W x H x D (IN)	INPUT VOLTAGE (V)	CAPACITY @ 140°F SUPPLY/ RETURN (GPD)	CAPACITY @ 120°F SUPPLY/ RETURN (GPD)	CAPACITY @ 100°F SUPPLY/ RETURN (GPD)	HUMIDISTAT CONTROLLER INCLUDED	REPLACEMENT PAD
84-25054-02	Flow-Thru Bypass	Return or Supply	11-1/2 x 9-1/2 x 16-1/2	8-5/8 x 10-3/4	24	16.1 / 18.7	12.4 / 14.4	8.2 / 9.5	45-25055-99	84-25055-02
84-25054-05	Flow-Thru Bypass	Return or Supply	11-1/2 x 9-1/2 x 19-1/2	8-5/8 x 13-3/4	24	20.0 / 23.3	15.4 / 18.0	11.0 / 12.8	45-25055-99	84-25055-01

#### Humidifiers – Atomizing



Atomizing humidification sprays a fine mist of water directly into the air stream. Not recommended for heat pumps or systems where supply air is less than 120°F.

- No pads or filters
- Includes self-piercing saddle valve, solenoid valve, and humidistat
- Tilt-out mounting
- Patented multi-position adjustable nozzle
- 2-year limited warranty



PART NO	HUMIDIFIER TYPE	DUCT MOUNTING LOCATION	UNIT DIMENSIONS W x H x D (IN)	DUCT OPENING DIMENSIONS W x H x D (IN)	INPUT VOLTAGE (V)	CAPACITY @ 140°F SUPPLY/ RETURN (GPD)	CAPACITY @ 120°F SUPPLY/ RETURN (GPD)	CAPACITY @ 100°F SUPPLY/ RETURN (GPD)	HUMIDISTAT CONTROLLER INCLUDED	REPLACEMENT PAD
84-25054-04	Atomizing	Supply	6 x 2-3/4 x 6	5 x 5-3/8	24	11.0 / -	11.0 / -	Not Recommend	45-25055-99	—

## WHOLE-HOUSE HUMIDIFIERS – HUMIDIFIER PADS



#### Humidifier Pads – Foam Type for Conical Drum (Split)

PART NO	VENDOR	VENDOR PART NO	FILTER SHAPE	APPROX WIDTH (IN)	APPROX INSIDE DIA (IN)	APPROX OUTSIDE CIRCUM (IN)	APPROX MATERIAL THICKNESS (IN)	HUMIDIFIER CROSS REFERENCE	CASE QTY	CASE RES
84-25055-03	Trion	2024	Truncated Cone - Split	9	5	7-7/32	1	PROTECH: 84-25054-03; Trion (Herrmidifier): 2000	4	Yes



## WHOLE-HOUSE HUMIDIFIERS – HUMIDIFIER PADS



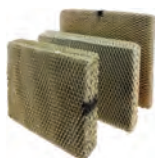
### Humidifier Pads – Foam Type for Drum (Split)

PART NO	VENDOR	VENDOR PART NO	FILTER SHAPE	APPROX WIDTH (IN)	APPROX INSIDE DIA (IN)	APPROX OUTSIDE CIRCUM (IN)	APPROX MATERIAL THICKNESS (IN)	HUMIDIFIER CROSS REFERENCE	CASE QTY	CASE RES
1412	Trion	1412	Cylindrical - Split	8	4-1/16	19	1	Trion (Herrmidifier): 447-1, 447C-1	—	No
1220	Trion	1220	Cylindrical - Split	8-5/8	5-7/8	24-3/4	1	Trion (Herrmidifier): 465-1, 465C-1, 470	—	No



### Humidifier Pads – Foam Type for Drum (Continuous)

PART NO	VENDOR	VENDOR PART NO	FILTER SHAPE	APPROX WIDTH (IN)	APPROX INSIDE DIA (IN)	APPROX OUTSIDE CIRCUM (IN)	APPROX MATERIAL THICKNESS (IN)	HUMIDIFIER CROSS REFERENCE	CASE QTY	CASE RES
84-A20	RPS Products	200EP	Cylindrical - Continuous	4-1/2	6-15/16	26-1/2	3/4	Auto Flo: 2500, 200P; Peerless Aire: 31002	6	Yes
84-A40	RPS Products	450EP	Cylindrical - Continuous	5	3-19/32	16	3/4	Auto Flo: 400BP, 450, 1400; Peerless Aire: 31001	12	Yes
84-HM1	RPS Products	HM1PR	Cylindrical - Continuous	7	4-13/16	19	5/8	Ward: 500; Hamilton: 2D; Wait: 2000 S.F.; Skuttle: 45; General: 65	12	Yes
84-HM2	RPS Products	HM2PR	Cylindrical - Continuous	8	6-1/16	24-1/2	7/8	Ward: 24, 700; Hamilton: 4D, 200D, 400D, 800D; Air King: 300, 400, 410; Lobb: WA1, WA2, AD-1; Lasko: 400L, 900L; General: 67, 81; Super: 700; Humidimatic: 98, 310, 4000; Skuttle: 90, 90-S, 190, 109, H100-S; Homeline: 400; Honeywell: HE120A1010; Wait: 900	12	Yes
84-A97	RPS Products	97EP	Cylindrical - Continuous	9	6-5/16	24-1/2	3/4	Auto Flo: 97	6	Yes



### Humidifier Pads – Rectangular Honeycombed Mesh Type

PART NO	VENDOR	VENDOR PART NO	FILTER SHAPE	APPROX WIDTH (IN)	APPROX LENGTH (IN)	APPROX THICKNESS (IN)	HUMIDIFIER CROSS REFERENCE	CASE QTY	CASE REQ
84-4EP	RPS Products	40EP	Rectangular	8-1/2	9	1-5/8	Auto Flo: 40, 40S, 250	12	Yes
84-25055-02	Trion	251597-004	Rectangular	9	11	2	PROTECH: 84-25054-02; Trion (Herrmidifier) : 200	6	Yes
84-25055-01	Trion	251597-003	Rectangular	9	14	2	PROTECH: 84-25054-01, 84-25054-05	6	Yes
HC22E1003	Honeywell	HC22E1003	Rectangular	9-1/2	10	1-1/2	Rheem/Ruud: RXIH-AB12A	10	Yes
84-A10	RPS Products	A10PR	Rectangular	9-1/2	10	1-5/8	Aprilaire: 110, 220, 550, 550A, 558; Chippewa: 220 Lasko: 5000L, 5000EC, 6000 Honeywell: HE-220A, HE-220B, HE-225A, HE-225B Hamilton: 12-HF; Lennox: WB212	10	Yes
84-G13	RPS Products	G13PR	Rectangular	9-1/2	11-3/4	1-1/2	General: 709, 990, 1040, 1042, 1137; Hamilton: 10HF Williamson Power: 500	6	Yes
HC26E1004	Honeywell	HC26E1004	Rectangular	10	13	1-1/2	Rheem/Ruud: RXIH-AB17A	10	Yes
84-A35	RPS Products	A35PR	Rectangular	10	13	1-5/8	Aprilaire: 350, 360, 560, 560A, 568, 600, 700, 760, 760A, 768 Honeywell: HE-260A, HE-260B, HE-265A, HE-265B, HE-360A, HE-360B, HE-365A, HE-365B, ME-360	10	Yes
84-A12	RPS Products	A12PR	Rectangular	11-3/8	14-3/4	1-5/8	Aprilaire: 112, 136, 224, 440, 445, 445A, 448; Chippewa: 224, 225, 226; Walton: 600, 620, 660	10	Yes
84-G20	RPS Products	G20PR	Rectangular	11-3/4	14-1/4	1-1/2	General: 1099	12	Yes

## RHEEM/RUUD WHOLE-HOUSE DEHUMIDIFIERS



In any season, excess humidity in the home can make for an uncomfortable indoor environment. Dampness, stickiness, and odors are just a few of the many symptoms associated with air that has too much moisture. The solution is a whole-house dehumidifier. Unlike portable units, a whole-house unit is installed in the home's central heating and cooling system, and works to eliminate excess moisture in all rooms.



- Includes MERV 11 media filter
- Compact and easy to install enclosure
- RXID-AW90A features an integrated ventilation control damper option that introduces outside fresh air into ductwork
- 5-year limited warranty

PART NO	CAPACITY PINTS/DAY @ 80°F & 60% RH	NOMINAL MAX CAPACITY (SQ FT)	UNIT DIM L x W x H (IN)	INLET DUCT SIZE DIA (IN)	OUTLET DUCT SIZE DIA (IN)	BLOWER RATING (CFM @ 0.0 IN WC)	BLOWER RATING (CFM @ 0.4 IN WC)	FRESH AIR DUCT SIZE DIA (IN)	INPUT VOLTAGE (V)	INPUT CURRENT (A)	POWER CONNECT TYPE
RXID-AW65A	65	2080	27 x 11-5/8 x 11-1/2	8	8	160	120	—	120	5.5	Cord connected
RXID-AW90A	97	2800	43-1/2 x 15-3/4 x 20-7/8	10	10	240	220	6	120	6.3	Cord connected

## RHEEM/RUUD RXIA-A01A DIGITAL CONTROL



The RXIA-A01A integrates control of home humidification, dehumidification and ventilation (including bathroom fans) into a single device. This control allows for programming air quality and fan settings individually or as a system. Features of this unit will automatically adjust settings for changes in outside temperature and provide maintenance reminders to help the equipment operating at peak efficiency, and increasing comfort and energy savings.



- Easy to use – Setting changes can be made easily with the touch of a button
- Easy to see – Intuitive digital backlit display
- All-in-One Control – Manages humidification, dehumidification, ventilation and bathroom fans from a central point in your home
- Smart Change/Check Reminders – Lets you know when to service or replace filters, UV bulbs and humidifier pads (based on actual run time)
- Customizable – Include individual air quality enhancements to your system with or integrate them all as part of a total air quality system
- Outdoor sensor included
- Advanced Temperature and Humidity Sensing – Simultaneously displays both indoor and outdoor temperature and humidity levels on-screen. Automatically adjusts inside settings based on outdoor conditions

PART NO	VOLTAGE (VAC)	MAX CURRENT - VENT, DEHUM, HUM CONTACTS (A)	ADJUSTMENT RANGE (% RH)	CONNECTIONS	SIZE W x H x D (IN)
RXIA-A01A	24	1	35-80	R,C,Sensor,Sensor,Switch,W,G,Vent,Vent,Dehum,Dehum,Hum,Hum	2-3/4 x 4-3/4 x 7/8

## PROTECH 3-STAGE IAQ-1 SYSTEM

The 3-Stage Indoor Air Quality (IAQ-1) System utilizes the latest in contamination control technology to reduce indoor pollution. It attacks all three classes of airborne contaminants: particulates, microbial and volatile organic compounds (VOCs). These include small dust particles, airborne mold spores, bacteria, viruses and chemical based odors.

The IAQ-1 is installed in the HVAC ductwork. Air in the home passes through the following stages:

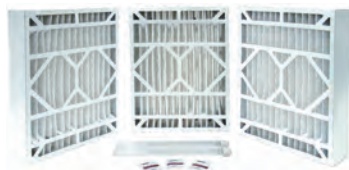
- 1 Media Filter – A high efficiency MERV 11 pleated particulate filter removes over 95% of particles down to 1 micron, including pollen, dust and pet dander.
- 2 UV-C Lamps – Two UV-C ultraviolet lamps remove bio-aerosols by penetrating the microbe's cell preventing reproduction. These include viruses, bacteria, mold spores and fungi.
- 3 Photo-catalytic oxidation (PCO) – The UV-C energy reacts with a patented Quartzel® felt material containing titanium dioxide. The Photo-catalytic oxidation (PCO) process effectively destroys volatile organic compounds (VOCs) that create unpleasant odors including paints, cleaning supplies, cooking smells and other gases.

Features include:

- Dual safety interlock switches; viewport allows safe viewing of UV lamp operation
- Mounts vertically or horizontally
- Low profile cabinet – only 10 in. high
- Front access door



PART NO	UNIT DIMENSIONS W x H x D (IN)	INPUT VOLTAGE (V)	CONNECTION TYPE	REPLACEMENT 5 IN MEDIA FILTER	REPLACEMENT 1 IN PICO FILTER	REPLACEMENT UV-C LAMP	TWO-YEAR MAINTENANCE PACK
IAQ17AH	17-1/2 x 21-3/4 x 10	120	Cord connected	540001	540004	864026-1PK	864027
IAQ17F	17-1/2 x 28 x 10	120	Cord connected	540001	540004	864026-1PK	864027
IAQ21AH	21 x 21-3/4 x 10	120	Cord connected	540002	540005	864026-1PK	864028
IAQ21F	21 x 28 x 10	120	Cord connected	540002	540005	864026-1PK	864028
IAQ24AH	24-1/2 x 21-3/4 x 10	120	Cord connected	540003	540007	864026-1PK	864029
IAQ24F	24-1/2 x 28 x 10	120	Cord connected	540003	540007	864026-1PK	864029

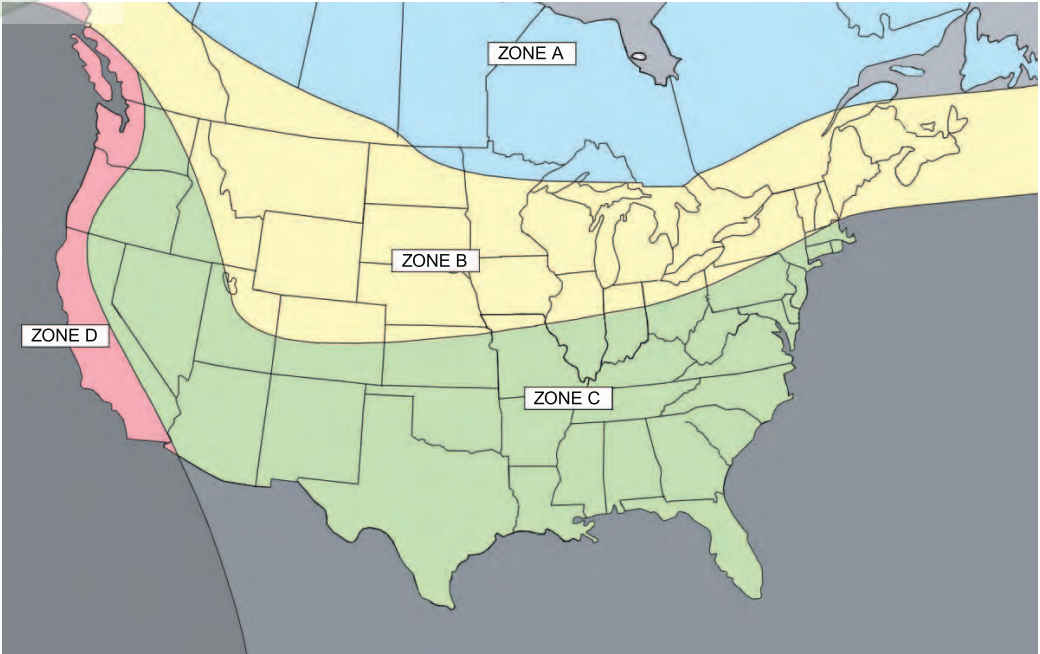


### Two Year Maintenance Packs for PROTECH 3-Stage IAQ-1 System

Includes three 5 inch pleated media filters (replace every 6 months); one Quartzel® Photo-catalytic felt filter (replace every 24 months); two UV-C lamps (replace every 12 months – clean every 6 months using included cotton gloves and pre-moistened cloth)

PART NO	DESCRIPTION
864027	Two Year Maintenance Pack for IAQ17AH and IAQ17F
864028	Two Year Maintenance Pack for IAQ21AH and IAQ21F
864029	Two Year Maintenance Pack for IAQ24AH and IAQ24F

**ENERGY AND HEAT RECOVERY VENTILATORS (ERV/HRV)**



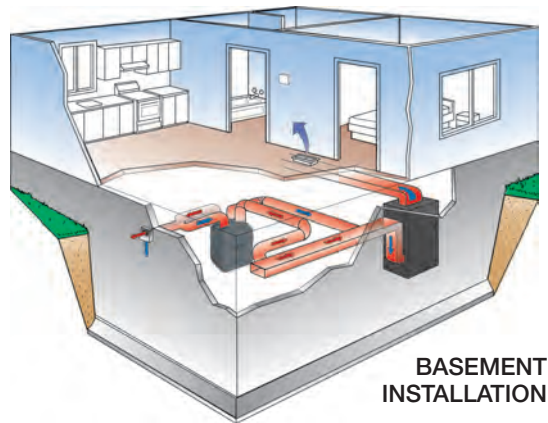
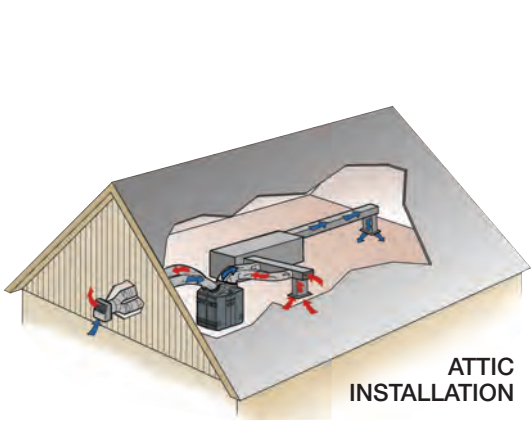
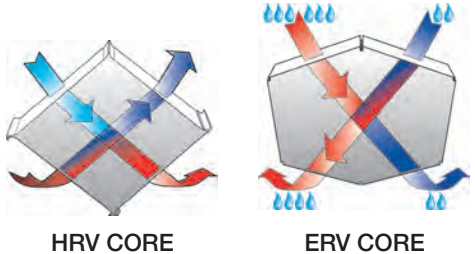
**INSTALLATION ZONES**

- Zone A HRV only
- Zone B ERV or HRV recommended
- Zone C ERV recommended
- Zone D HRV recommended

Energy Recovery Ventilators (ERVs) and Heat Recovery Ventilators (HRVs) are fresh air exchange appliances that take fresh air into a dwelling, clean and evenly circulate the fresh air and expel stale, polluted air while controlling humidity and minimizing heat loss/gain. The ERVs and HRVs are identical except for the recovery core (heat exchanger). HRVs are used primarily in cold northern climates while ERVs are used in the middle and southern U.S.

ERV/HRV systems use centrifugal blowers to remove the stale indoor air. The incoming and outgoing air streams moving through the system capture and transfer the heat from one air stream to another, while passing through a patented set of exchange cores. The temperature level from the indoor air is retained and transferred to the new incoming fresh outdoor air before circulating throughout the house.

- Provides a constant, controlled supply of fresh air to the home year-round
- Reduces unhealthy indoor air pollutants, such as radon, formaldehyde, smoke and odors



## ENERGY AND HEAT RECOVERY VENTILATORS (ERV/HRV)



### PROTECH 84-ERV/HRV Series



- Constructed of pre-painted steel and lined with foil-faced fiberglass insulation to minimize energy loss
- Choice of wall controls (required, sold separately)
- Optional remote push-button timer available to allow utilization of ERV/HRV for spot ventilation
- 6 in. round inlets and outlets for easy duct connections
- Smart defrost system to prevent freeze-ups
- 20 gauge pre-painted steel with corrosion resistant finish
- Easily removable, washable, metal framed air filters
- Built-in 1/2 in. drain tube connection fittings
- Integral dampers for balancing air flow
- PSC motor designed for constant operation
- Three optional blower speeds, two speeds
- Ultra quiet blower design
- Deeper one-piece condensate tray
- Sturdy damper design for adverse weather conditions
- HVI certified

PART NO	PRODUCT TYPE	OVERALL DIMENSIONS H x W x D (IN)	MAX RATED AIR FLOW (CFM)	INTERNAL FILTER	VOLTAGE INPUT (V)	INPUT CURRENT (A)	CONNECTION TYPE	WALL CONTROL	PUSH BUTTON CONTROLS	LIMITED WARRANTY CORE	LIMITED WARRANTY PARTS
84-ERV100	Energy Recovery Ventilator (ERV)	20 x 30-1/4 x 13-3/4	100	—	120	1.4	Cord connected	Required sold separately	Optional sold separately	5 years	1 year
84-ERV200	Energy Recovery Ventilator (ERV)	20 x 30-1/4 x 19	200	—	120	1.9	Cord connected	Required sold separately	Optional sold separately	5 years	1 year
84-HRV100	Heat Recovery Ventilator (HRV)	20 x 30-1/4 x 13-3/4	100	—	120	1.4	Cord connected	Required sold separately	Optional sold separately	Lifetime	1 year
84-HRV200	Heat Recovery Ventilator (HRV)	20 x 30-1/4 x 19	200	—	120	1.9	Cord connected	Required sold separately	Optional sold separately	Lifetime	1 year



### PROTECH 84-ERV/HRV Series – Main Wall Control – Value Model

All 84-ERV/HRV models require a main wall control. Two options are available.

PART NO	DESCRIPTION	SWITCH POSITIONS	SWITCH TYPE	INDICATORS	CONDENSATION CONTROL	SIZE W x H x D (IN)
41-40220-01	Value Wall Control	Off, Intermittent, Low, High	Push button	Mode, Air Exchange, Condensation Control Max. Speed, Maintenance	Yes	5 x 5 x 1-3/8



### PROTECH 84-ERV/HRV Series – Main Wall Control – Economy Model

All 84-ERV/HRV models require a main wall control. Two options are available.

PART NO	DESCRIPTION	SWITCH POSITIONS	SWITCH TYPE	INDICATORS	CONDENSATION CONTROL	SIZE W x H x D (IN)
41-40210-01	Economy Wall Control	Off, Low, High	Slide switch	None	Yes	5 x 5 x 1-3/8



### PROTECH 84-ERV/HRV Series – Remote Push Button

This optional remote illuminated switch is typically installed in bathrooms, kitchen and laundry rooms to provide 20, 40 or 60 minutes of high speed ventilation at the push of a button.

PART NO	DESCRIPTION
41-18061-10	Remote Push Button



### PROTECH 84-ERV/HRV Series – Metal Vent Kit

PART NO	DESCRIPTION
89-16071-00	Metal Vent Hood Kit – 6 in.

**ENERGY AND HEAT RECOVERY VENTILATORS (ERV/HRV)**



**PROTECH 84-ERV/HRV-HEPA Series**

These models combine the advantages of an ERV/HRV with a high efficiency HEPA, which traps airborne allergens such as pollen, dust, mold and bacteria.

- Eliminates 99.97% of all particles down to 0.3 micron
- Rugged ABS polymeric cabinet
- Oval outlets with adapters to fit 8 in. non-insulated ducts or 5 to 6 in. insulated duct
- Wall control included
- HVI certified



PART NO	PRODUCT TYPE	OVERALL DIMENSIONS H x W x D (IN)	MAX RATED AIR FLOW (CFM)	INTERNAL FILTER	VOLTAGE INPUT (V)	INPUT CURRENT (A)	CONNECTION TYPE	WALL CONTROL	PUSH BUTTON CONTROLS	LIMITED WARRANTY CORE	LIMITED WARRANTY PARTS
84-ERV-HEPA4	Energy Recovery Ventilator (ERV)	29-3/8 x 22-7/8 x 17-3/4	270	HEPA	120	2.0	Cord connected	Included	Not available	2 years	2 years
84-HRV-HEPA3	Heat Recovery Ventilator (HRV)	29-3/8 x 22-7/8 x 17-3/4	270	HEPA	120	2.0	Cord connected	Included	Not available	2 years	2 years

**OEM ACCESSORY FILTER BASES**



**RXHF Residential Air Handler Series – Upflow with Hinged Door**

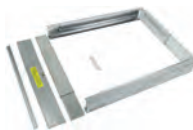


PART NO	HOUSING OVERALL (OUTSIDE) DIM WIDTH (IN)	HOUSING OVERALL (OUTSIDE) DIM LENGTH (IN)	HOUSING OVERALL (OUTSIDE) DIM HEIGHT (IN)	AIR OPENING INLET DIM WIDTH (IN)	AIR OPENING INLET DIM LENGTH (IN)	AIR OPENING OUTLET DIM WIDTH (IN)	AIR OPENING OUTLET DIM LENGTH (IN)	NUMBER OF FILTERS PER UNIT	REPLACEMENT MEDIA DIM NOMINAL (IN)	REPLACEMENT MEDIA DIM ACTUAL (IN)	REPLACEMENT MEDIA THICKNESS (IN)	INSULATION	TYPICAL APPLICATION	DUCT CONFIGURATION	DOOR TYPE	DOOR OPENING ON
RXHF-17	17-1/2	21	3-5/8	15-3/4	19-1/2	15-3/4	19-1/2	1	16 x 20	15-7/8 x 19-11/16	1 or 2	Yes	Upflow - Electric	Through	Hinged	17-1/2 Side
RXHF-21	21	21	3-5/8	19-1/4	19-1/2	19-1/4	19-1/2	1	20 x 20	19-9/16 x 19-9/16	1 or 2	Yes	Upflow - Electric	Through	Hinged	21 Side
RXHF-24	25-1/2	21	3-5/8	22-3/4	19-1/2	22-3/4	19-1/2	1	20 x 25	19-3/4 x 24-1/2	1 or 2	Yes	Upflow - Electric	Through	Hinged	25-1/2 Side

**RXGF-CA Side Return Filter Rack – Gas Upflow**



PART NO	HOUSING OVERALL (OUTSIDE) DIM WIDTH (IN)	HOUSING OVERALL (OUTSIDE) DIM LENGTH (IN)	HOUSING OVERALL (OUTSIDE) DIM HEIGHT (IN)	AIR OPENING INLET DIM WIDTH (IN)	AIR OPENING INLET DIM LENGTH (IN)	AIR OPENING OUTLET DIM WIDTH (IN)	AIR OPENING OUTLET DIM LENGTH (IN)	NUMBER OF FILTERS PER UNIT	REPLACEMENT MEDIA DIM NOMINAL (IN)	REPLACEMENT MEDIA DIM ACTUAL (IN)	REPLACEMENT MEDIA THICKNESS (IN)	INSULATION	TYPICAL APPLICATION	DUCT CONFIGURATION	DOOR TYPE	DOOR OPENING ON
RXGF-CA	25-1/8	16-1/8	2-1/16	25	16	25	16	1	16 x 25	15-7/8 x 24-7/8	1	No	Side Return - Gas Upflow	Through	Slide Out	16-1/8 Side



**RXGF-CB Bottom Mount Filter Rack – Gas Upflow**



PART NO	HOUSING OVERALL (OUTSIDE) DIM WIDTH (IN)	HOUSING OVERALL (OUTSIDE) DIM LENGTH (IN)	HOUSING OVERALL (OUTSIDE) DIM HEIGHT (IN)	AIR OPENING INLET DIM WIDTH (IN)	AIR OPENING INLET DIM LENGTH (IN)	AIR OPENING OUTLET DIM WIDTH (IN)	AIR OPENING OUTLET DIM LENGTH (IN)	NUMBER OF FILTERS PER UNIT	REPLACEMENT MEDIA DIM NOMINAL (IN)	REPLACEMENT MEDIA DIM ACTUAL (IN)	REPLACEMENT MEDIA THICKNESS (IN)	INSULATION	TYPICAL APPLICATION	DUCT CONFIGURATION	DOOR TYPE	DOOR OPENING ON
RXGF-CB	24-1/4	28-1/4	3-1/2	21-1/2	27-1/4	21-1/2	24-1/4	1	23 x 25	22-3/4 x 25	0.375	No	Bottom Mount - Gas Upflow	Through	Lift-Out	24-1/2 Side

**ENERGY AND HEAT RECOVERY VENTILATORS (ERV/HRV)**



**84-ERV/HRV-HEPA Series – Vent Termination Accessory**

PART NO	DESCRIPTION
14690	Tandem Transition (Installation Kit – Optional)



**Flow Collar Installation Kit for ERV/HRV Installation**

This kit is designed for the installing technician and allows easy and accurate balancing in incoming and outgoing airflow through the ERV/HRV system during installation, assuring the system is not imposing either a negative or positive pressure upon the structure.

PART NO	DESCRIPTION
11988	Flow Collar Kit

OEM ACCESSORY FILTER BASES

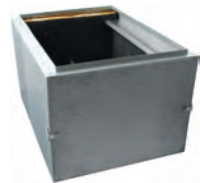


RXGF-CC Top Mount Filter Rack – Gas Downflow



PART NO	HOUSING OVERALL (OUTSIDE) DIM WIDTH (IN)	HOUSING OVERALL (OUTSIDE) DIM LENGTH (IN)	HOUSING OVERALL (OUTSIDE) DIM HEIGHT (IN)	AIR OPENING INLET DIM WIDTH (IN)	AIR OPENING INLET DIM LENGTH (IN)	AIR OPENING OUTLET DIM WIDTH (IN)	AIR OPENING OUTLET DIM LENGTH (IN)	NUMBER OF FILTERS PER UNIT	REPLACEMENT MEDIA DIM NOMINAL (IN)	REPLACEMENT MEDIA DIM ACTUAL (IN)	REPLACEMENT MEDIA THICKNESS (IN)	INSULATION	TYPICAL APPLICATION	DUCT CONFIGURATION	DOOR TYPE	DOOR OPENING ON
RXGF-CC	24-3/4	21	16	23-1/4	19-3/4	23-1/2	20-1/4	2	12 x 20 14 x 20	11-15/16 x 19-15/16 13-15/16 x 19-15/16	1	No	Downflow - Gas	Through	Lift-Out	24-1/2 Side

MCDANIELS METAL FILTER BASES



Filter Bases – Downflow with Flip Latch Door (CF Series) **McDaniel Metals, Inc.**

- Uses standard filter sizes
- Easy filter access
- Filter access without vent pipe interference
- Filters angled to maximize surface area
- Embossed heavy gauge steel construction
- Fully insulated

PART NO	VENDOR PART NO	SERIES	HOUSING OVERALL (OUTSIDE) DIM WIDTH (IN)	HOUSING OVERALL (OUTSIDE) DIM LENGTH (IN)	HOUSING OVERALL (OUTSIDE) DIM HEIGHT (IN)	AIR OPENING INLET DIM WIDTH (IN)	AIR OPENING INLET DIM LENGTH (IN)	AIR OPENING OUTLET DIM WIDTH (IN)	AIR OPENING OUTLET DIM LENGTH (IN)	NUMBER OF FILTERS PER UNIT	REPLACEMENT MEDIA DIM NOMINAL (IN)	REPLACEMENT MEDIA DIM ACTUAL (IN)	REPLACEMENT MEDIA THICKNESS (IN)	INSULATION	TYPICAL APPLICATION	DUCT CONFIGURATION	DOOR TYPE	DOOR OPENING ON
54-1020-CF1	1020-CF1	CF	15-3/4	21-3/8	12	12-5/8	20-1/8	13-3/4	19-7/8	2	10 x 20	9-7/8 x 19-7/8	1	Yes	Downflow - Gas	Through	Flip Latch	15-3/4 Side
54-1020-CF2	1020-CF2	CF	18-3/4	21-3/8	12	16-1/8	20-1/8	16-3/4	19-7/8	3	10 x 20	9-7/8 x 19-7/8	1	Yes	Downflow - Gas	Through	Flip Latch	18-3/4 Side
54-1020-CF3	1020-CF3	CF	23-1/4	21-3/8	12	20	20-1/8	21-1/4	19-7/8	3	10 x 20	9-7/8 x 19-7/8	1	Yes	Downflow - Gas	Through	Flip Latch	23-1/4 Side
54-1020-CF4	1020-CF4	CF	27-3/4	21-3/8	12	23-3/8	20-1/8	25-3/4	19-7/8	4	10 x 20	9-7/8 x 19-7/8	1	Yes	Downflow - Gas	Through	Flip Latch	27-3/4 Side



Filter Bases – Upflow with Hinged Door (ACD, ACG Series) **McDaniel Metals, Inc.**

- Uses standard filter sizes
- Hinged door provides easy filter access
- Gasketed door ensures tight seal
- Fully insulated

PART NO	VENDOR PART NO	SERIES	HOUSING OVERALL (OUTSIDE) DIM WIDTH (IN)	HOUSING OVERALL (OUTSIDE) DIM LENGTH (IN)	HOUSING OVERALL (OUTSIDE) DIM HEIGHT (IN)	AIR OPENING INLET DIM WIDTH (IN)	AIR OPENING INLET DIM LENGTH (IN)	AIR OPENING OUTLET DIM WIDTH (IN)	AIR OPENING OUTLET DIM LENGTH (IN)	NUMBER OF FILTERS PER UNIT	REPLACEMENT MEDIA DIM NOMINAL (IN)	REPLACEMENT MEDIA DIM ACTUAL (IN)	REPLACEMENT MEDIA THICKNESS (IN)	INSULATION	TYPICAL APPLICATION	DUCT CONFIGURATION	DOOR TYPE	DOOR OPENING ON
54-1420-E3	1420-E3	ACE	15-3/8	22	3-3/4	12-7/8	19	12-7/8	19	1	14 x 20	13-15/16 x 19-15/16	1 or 2	Yes	Upflow - Electric	Through	Hinged	15-3/8 Side
54-1420-E6	1420-E6	ACE	15-3/8	22	5-3/4	12-7/8	19	12-7/8	19	1	14 x 20	13-15/16 x 19-15/16	1,2 or 4	Yes	Upflow - Electric	Through	Hinged	15-3/8 Side
54-1425-G3	1425-G3	ACG	15-3/8	28-1/2	3-3/4	12-7/8	26-1/2	12-7/8	26-1/2	1	14 x 25	13-15/16 x 24-15/16	1 or 2	Yes	Upflow - Gas	Through	Hinged	15-3/8 Side
54-1425-G6	1425-G6	ACG	15-3/8	28-1/2	5-3/4	12-7/8	26-1/2	12-7/8	26-1/2	1	14 x 25	13-15/16 x 24-15/16	1,2 or 4	Yes	Upflow - Gas	Through	Hinged	15-3/8 Side
54-1620-E3	1620-E3	ACE	17-3/8	22	3-3/4	14-7/8	19	14-7/8	19	1	16 x 20	15-7/8 x 19-11/16	1 or 2	Yes	Upflow - Electric	Through	Hinged	17-3/8 Side
54-1620-E6	1620-E6	ACE	17-3/8	22	5-3/4	14-7/8	19	14-7/8	19	1	16 x 20	15-7/8 x 19-11/16	1,2 or 4	Yes	Upflow - Electric	Through	Hinged	17-3/8 Side
54-1625-G3	1625-G3	ACG	17-3/8	28-1/2	3-3/4	14-7/8	26-1/2	14-7/8	26-1/2	1	16 x 25	15-7/8 x 24-7/8	1 or 2	Yes	Upflow - Gas	Through	Hinged	17-3/8 Side
54-1625-G6	1625-G6	ACG	17-3/8	28-1/2	5-3/4	14-7/8	26-1/2	14-7/8	26-1/2	1	16 x 25	15-7/8 x 24-7/8	1,2 or 4	Yes	Upflow - Gas	Through	Hinged	17-3/8 Side
54-1625-H6	1625-H6	ACG	17-3/8	28-1/2	5-3/4	14-7/8	26-1/2	14-7/8	26-1/2	1	16 x 25 or Honeywell F100	15-7/8 x 24-7/8 or Honeywell F100	1,2 or 4	Yes	Upflow - Gas	Through	Hinged	17-3/8 Side
54-2020-E3	2020-E3	ACE	21-3/8	22	3-3/4	17-1/4	19	17-1/4	19	1	20 x 20	19-9/16 x 19-9/16	1 or 2	Yes	Upflow - Electric	Through	Hinged	21-3/8 Side
54-2020-E6	2020-E6	ACE	21-3/8	22	5-3/4	18-7/8	19	18-7/8	19	1	20 x 20	19-9/16 x 19-9/16	1,2 or 4	Yes	Upflow - Electric	Through	Hinged	21-3/8 Side
54-2025-E3N	2025-E3N	ACE	21-3/8	25	3-3/4	18-3/4	23	18-3/4	23	1	20 x 25	19-3/4 x 24-1/2	1 or 2	Yes	Upflow - Electric	Through	Hinged	21-3/8 Side
54-2025-E6N	2025-E6N	ACE	21-3/8	25	5-3/4	18-3/4	23	18-3/4	23	1	20 x 25	19-3/4 x 24-1/2	1,2 or 4	Yes	Upflow - Electric	Through	Hinged	21-3/8 Side
54-2025-G3	2025-G3	ACG	21-3/8	28-1/2	3-3/4	18-7/8	26-1/2	18-7/8	26-1/2	1	20 x 25	19-3/4 x 24-1/2	1 or 2	Yes	Upflow - Gas	Through	Hinged	21-3/8 Side
54-2025-G6	2025-G6	ACG	21-3/8	28-1/2	5-3/4	18-7/8	26-1/2	18-7/8	26-1/2	1	20 x 25	19-3/4 x 24-1/2	1,2 or 4	Yes	Upflow - Gas	Through	Hinged	21-3/8 Side
54-2424-G3	2424-G3	ACG	25-3/8	28-1/2	3-3/4	22-7/8	26-1/2	22-7/8	26-1/2	1	24 x 24	23-5/8 x 23-5/8	1 or 2	Yes	Upflow - Gas	Through	Hinged	25-3/8 Side
54-2424-G6	2424-G6	ACG	25-3/8	28-1/2	5-3/4	22-7/8	26-1/2	22-7/8	26-1/2	1	24 x 24	23-5/8 x 23-5/8	1,2 or 4	Yes	Upflow - Gas	Through	Hinged	25-3/8 Side
54-2025-E3	2025-E3	ACE	26-3/8	22	3-3/4	19	23-7/8	23-7/8	19	1	20 x 25	19-3/4 x 24-1/2	1 or 2	Yes	Upflow - Electric	Through	Hinged	26-3/8 Side
54-2025-E6	2025-E6	ACE	26-3/8	22	5-3/4	19	23-7/8	23-7/8	19	1	20 x 25	19-3/4 x 24-1/2	1,2 or 4	Yes	Upflow - Electric	Through	Hinged	26-3/8 Side

## MCDANIEL METALS FILTER BASES



### Filter Bases – Horizontal with Hinged Door (HR, HRB Series) **McDaniel Metals, Inc.**

- Uses standard filter sizes
- Horizontal or side return applications
- Fully insulated
- HR models include duct flange
- HRB models blocked on both side

PART NO	VENDOR PART NO	SERIES	HOUSING OVERALL (OUTSIDE) DIM WIDTH (IN)	HOUSING OVERALL (OUTSIDE) DIM LENGTH (IN)	HOUSING OVERALL (OUTSIDE) DIM HEIGHT (IN)	AIR OPENING INLET DIM WIDTH (IN)	AIR OPENING INLET DIM LENGTH (IN)	AIR OPENING OUTLET DIM WIDTH (IN)	AIR OPENING OUTLET DIM LENGTH (IN)	NUMBER OF FILTERS PER UNIT	REPLACEMENT MEDIA DIM NOMINAL (IN)	REPLACEMENT MEDIA DIM ACTUAL (IN)	REPLACEMENT MEDIA THICKNESS (IN)	INSULATION	TYPICAL APPLICATION	DUCT CONFIGURATION	DOOR TYPE	DOOR OPENING ON
54-2025-HR25	2025-HR25	HR	6-5/8	20-1/2	25	19-3/4	19	Cut in Field	Cut in Field	1	20 x 25	19-3/4 x 24-1/2	1,2, or 4	Yes	Horizontal	Through	Hinged	25 Side
54-2025-HRB25	2025-HRB25	HRB	6-5/8	20-1/2	25	Cut in Field	Cut in Field	Cut in Field	Cut in Field	1	20 x 25	19-3/4 x 24-1/2	1,2 or 4	Yes	Horizontal - Blank	Through	Hinged	25 Side
54-2025-HR20	2025-HR20	HR	6-5/8	25-1/2	20	19-3/4	19	Cut in Field	Cut in Field	1	20 x 25	19-3/4 x 24-1/2	1,2, or 4	Yes	Horizontal	Through	Hinged	20 Side
54-2025-HRB20	2025-HRB20	HRB	6-5/8	25-1/2	20	Cut in Field	Cut in Field	Cut in Field	Cut in Field	1	20 x 25	19-3/4 x 24-1/2	1,2 or 4	Yes	Horizontal - Blank	Through	Hinged	20 Side



### Filter Bases – Upflow (Labor Saver - LS Series) **McDaniel Metals, Inc.**

- Adjustable rack for 1 in., 2 in. or 4 in. filters
- Uses standard filter sizes
- Easy hardware-free dual-sized filter access
- Fully insulated with 1 in. insulation
- Filters angled to maximize surface area
- Embossed heavy gauge steel construction
- Elevated boxes raises furnace to plenum for efficient installation

PART NO	VENDOR PART NO	SERIES	HOUSING OVERALL (OUTSIDE) DIM WIDTH (IN)	HOUSING OVERALL (OUTSIDE) DIM LENGTH (IN)	HOUSING OVERALL (OUTSIDE) DIM HEIGHT (IN)	AIR OPENING INLET DIM WIDTH (IN)	AIR OPENING INLET DIM LENGTH (IN)	AIR OPENING OUTLET DIM WIDTH (IN)	AIR OPENING OUTLET DIM LENGTH (IN)	NUMBER OF FILTERS PER UNIT	REPLACEMENT MEDIA DIM NOMINAL (IN)	REPLACEMENT MEDIA DIM ACTUAL (IN)	REPLACEMENT MEDIA THICKNESS (IN)	INSULATION	TYPICAL APPLICATION	DUCT CONFIGURATION	DOOR TYPE	DOOR OPENING ON
54-2232-LS	2232-LS	LS	32	22-1/2	14	9-1/2	20-1/2	14-1/2	20-1/2	1	20 x 20	19-9/16 x 19-9/16	1,2, or 4	Yes	Upflow Gas/Electric (Labor Saver)180° Angle	Through	Lift-Out	32 Side
54-2832-LS	2832-LS	LS	32	28-1/2	14	8	24	13-1/2	26-1/2	1	20 x 25	19-3/4 x 24-1/2	1,2, or 4	Yes	Upflow Gas/Electric (Labor Saver)180° Angle	Through	Lift-Out	32 Side
54-2240-LS	2240-LS	LS	40	22-1/2	14	12	20-1/2	20	20-1/2	—	20 x 25	19-3/4 x 24-1/2	1,2, or 4	Yes	Upflow Gas/Electric (Labor Saver)180° Angle	Through	Lift-Out	40 Side
54-2840-LS	2840-LS	LS	40	28-1/2	14	10	24	19	26-1/2	—	24 x 24	23-5/8 x 23-5/8	1,2, or 4	Yes	Upflow Gas/Electric (Labor Saver)180° Angle	Through	Lift-Out	40 Side



### Upflow Plenums (UFFPE, UFFPG Series) **McDaniel Metals, Inc.**

- Adjustable rack for 1 in., 2 in. and 4 in. filters
- Uses standard filter sizes
- Hinged door for easy filter access
- Return access on sides and rear
- No need for construction platform
- Gasketed door for tight seal
- 24 gauge steel construction

PART NO	VENDOR PART NO	SERIES	HOUSING OVERALL (OUTSIDE) DIM WIDTH (IN)	HOUSING OVERALL (OUTSIDE) DIM LENGTH (IN)	HOUSING OVERALL (OUTSIDE) DIM HEIGHT (IN)	AIR OPENING INLET DIM WIDTH (IN)	AIR OPENING INLET DIM LENGTH (IN)	AIR OPENING OUTLET DIM WIDTH (IN)	AIR OPENING OUTLET DIM LENGTH (IN)	NUMBER OF FILTERS PER UNIT	REPLACEMENT MEDIA DIM NOMINAL (IN)	REPLACEMENT MEDIA DIM ACTUAL (IN)	REPLACEMENT MEDIA THICKNESS (IN)	INSULATION	TYPICAL APPLICATION	DUCT CONFIGURATION	DOOR TYPE	DOOR OPENING ON
UFFPE14	UFFPE14	UFFPE	15-1/2	22	18	Cut in Field	Cut in Field	13	19	1	14 x 20	13-15/16 x 19-15/16	1,2 or 4	No	Upflow - Electric	Through	Hinged	15-1/2 Side
UFFPG14	UFFPG14	UFFPG	15-1/2	29	18	Cut in Field	Cut in Field	13	26	—	14 x 25	13-15/16 x 24-15/16	1,2 or 4	No	Upflow - Gas	Through	Hinged	15-1/2 Side
UFFPE17	UFFPE17	UFFPE	17-1/2	22	18	Cut in Field	Cut in Field	15	19	1	16 x 20	15-7/8 x 19-11/16	1,2 or 4	No	Upflow - Electric	Through	Hinged	17-1/2 Side
UFFPG17	UFFPG17	UFFPG	17-1/2	29	18	Cut in Field	Cut in Field	15	26	1	16 x 25	15-7/8 x 24-7/8	1,2 or 4	No	Upflow - Gas	Through	Hinged	17-1/2 Side
UFFPE21	UFFPE21	UFFPE	21-1/2	22	18	Cut in Field	Cut in Field	19	19	1	20 x 20	19-9/16 x 19-9/16	1,2 or 4	No	Upflow - Electric	Through	Hinged	21-1/2 Side
UFFPG21	UFFPG21	UFFPG	21-1/2	29	18	Cut in Field	Cut in Field	19	26	—	20 x 25	19-3/4 x 24-1/2	1,2 or 4	No	Upflow - Gas	Through	Hinged	21-1/2 Side
UFFPG25	UFFPG25	UFFPG	25-1/2	29	18	Cut in Field	Cut in Field	23	26	—	24 x 24	23-5/8 x 23-5/8	1,2 or 4	No	Upflow - Gas	Through	Hinged	25-1/2 Side
UFFPE24	UFFPE24	UFFPE	26-1/2	22	18	Cut in Field	Cut in Field	24	19	—	25 x 20	24-1/2 x 19-3/4	1,2 or 4	No	Upflow - Electric	Through	Hinged	26-1/2 Side



## DYNAMIC POLARIZED MEDIA AIR CLEANERS



As tiny sub-micron particles and volatile organic compounds (VOCs) pass through the central heating and cooling system, they become polarized by the electric field inside the air cleaner. Polarized particles become larger as they join together with other polarized particles and collect on the polarized media pad. The Dynamic Air Cleaner is a non-ionizing air cleaner that removes sub-micron particles that other filters miss, including bacteria, pollen, mold and fine dust. Excellent for removing tobacco smoke and residual odors.



- Very high multiple pass efficiency (95-99% for particles of 0.3 to 0.5 micron size); rises as the air cleaner loads (confirmed by independent laboratories)
- Equivalency to MERV 13 rating on more traditional media filters
- Air cleaners fit directly into existing filter racks or return air grilles
- 24V power supply; optional transformer 84-110V-24V plugs directly into a 120V outlet
- 6000VDC output voltage to polarized media
- No ozone production
- Low static resistance to airflow; maximum recommended face velocity: 500 FPM
- Disposable carbon-filled media pads only require a few minutes to change; requires replacement every three to four months
- Custom sizes available
- Toll-Free NATE certified Technical Support 800.578.7873
- 5-year limited warranty

PART NO	NOMINAL WIDTH (IN)	NOMINAL LENGTH (IN)	THICKNESS (IN)	REPLACEMENT MEDIA (3 PK)	REPLACEMENT MEDIA (24 PK)
84-10X20-1	10	20	1	54-10X20-R	54-10X20-RB
84-10X30-1	10	30	1	54-10X30-R	54-10X30-RB
84-12X12-1	12	12	1	54-12X12-R	—
84-12X20-1	12	20	1	54-12X20-R	54-12X20-RB
84-12X24-1	12	24	1	54-12X24-R	54-12X24-RB
84-12X25-1	12	25	1	54-12X25-R	54-12X25-RB
84-12X30-1	12	30	1	54-12X30-R	—
84-12X36-1	12	36	1	54-12X36-R	54-12X36-RB
84-14X14-1	14	14	1	54-14X14-R	—
84-14X20-1	14	20	1	54-14X20-R	54-14X20-RB
84-14X24-1	14	24	1	54-14X24-R	54-14X24-RB
84-14X25-1	14	25	1	54-14X25-R	54-14X25-RB
84-14X30-1	14	30	1	54-14X30-R	54-14X30-RB
84-14X38-1	14	38	1	54-14X38-R	54-14X38-RB
84-15X20-1	15	20	1	54-15X20-R	54-15X20-RB
84-16X16-1	16	16	1	54-16X16-R	54-16X16-RB
84-16X20-1	16	20	1	54-16X20-R	54-16X20-RB
84-16X24-1	16	24	1	54-16X24-R	54-16X24-RB
84-1RF-16X25-1	16	25	1	54-16X25-R	54-16X25-RB
84-16X25-1	16	25	1	54-16X25-R	54-16X25-RB
84-16X30-1	16	30	1	54-16X30-R	54-16X30-RB
84-16X36-1	16	36	1	54-16X36-R	54-16X36-RB
84-16-1/2X21-1	16-1/2	21	1	54-16-1/2X21-R	—
84-1RF-AA2400-1	16-5/8	27-1/2	1	—	—
84-17X28.25-1	17	28-1/4	1	54-17X28.25-R	54-17X28.25-RB
84-17.25X29.5-1	17-1/4	29-1/2	1	—	—
84-18X18-1	18	18	1	54-18X18-R	54-18X18-RB
84-18X20-1	18	20	1	54-18X20-R	54-18X20-RB
84-18X23-1	18	23	1	—	—
84-18X24-1	18	24	1	54-18X24-R	54-18X24-RB
84-18X25-1	18	25	1	54-18X25-R	54-18X25-RB
84-18X30-1	18	30	1	54-18X30-R	54-18X30-RB
84-19X19-1	19-3/8	19-3/8	1	54-19X19-R	54-19X19-RB
84-19X23-1	19-3/8	23-3/8	1	54-19X23-R	54-19X23-RB
84-19X29-1	19-3/8	29-3/8	1	54-19X29-R	54-19X29-RB
84-19.5X19.5-1	19-1/2	19-1/2	1	—	—
84-19.5X26-1	19-1/2	26	1	54-19.5X26-R	54-19.5X26-RB

(continued on next page)

## DYNAMIC POLARIZED MEDIA AIR CLEANERS CONTINUED

PART NO	NOMINAL WIDTH (IN)	NOMINAL LENGTH (IN)	THICKNESS (IN)	REPLACEMENT MEDIA (3 PK)	REPLACEMENT MEDIA (24 PK)
84-20X20-1	20	20	1	54-20X20-R	54-20X20-RB
84-20x21.58-1	20	21-5/8	1	54-20x21.58-R	—
84-20X24-1	20	24	1	54-20X24-R	54-20X24-RB
84-1RF-20X24.25-1	20	24-1/4	1	54-20X24.25-R	54-20X24.25-RB
84-1RF-20X25-1	20	25	1	54-20X25-R	54-20X25-RB
84-20X25-1	20	25	1	54-20X25-R	54-20X25-RB
84-20X28-1	20	28	1	54-20X28-R	54-20X28-RB
84-20X30-1	20	30	1	54-20X30-R	54-20X30-RB
84-20X32-1	20	32	1	54-20X32-R	54-20X32-RB
84-20X36-1	20	36	1	—	—
84-20X40-1	20	40	1	54-20X40-R	54-20X40-RB
84-20X48-1	20	48	1	54-20X48-R	54-20X48-RB
84-20.5X26-1	20-1/2	26	1	—	—
84-21X23-1	21	23	1	—	—
84-21X24-1	21	24	1	54-21X24-R	54-21X24-RB
84-21.5X25.5-1	21-1/2	25-1/2	1	54-21.5X25.5-R	54-21.5X25.5-RB
84-1RF-AA2200-1	21-1/2	25-1/2	1	54-21.5X25.5-R	54-21.5X25.5-RB
84-22X28-1	22	28	1	54-22X28-R	54-22X28-RB
84-22X30-1	22	30	1	—	—
84-23X27-1	23	27	1	54-23X27-R	—
84-23X23-1	23-3/8	23-3/8	1	54-23X23-R	54-23X23-RB
84-24X24-1	24	24	1	54-24X24-R	54-24X24-RB
84-24X30-1	24	30	1	54-24X30-R	54-24X30-RB
84-24X36-1	24	36	1	54-24X36-R	54-24X36-RB
84-25X25-1	25	25	1	54-25X25-R	54-25X25-RB
84-26-1/2X35-1/4-1	26-1/2	35-1/4	1	54-26-1/2X35-1/4-R	—
84-28X32-1	28	32	1	54-28X32-R	—
84-28X36-1	28	36	1	54-28X36-R	—
84-30X30-1	30	30	1	54-30X30-R	54-30X30-RB
84-30X32-1	30	32	1	54-30X32-R	54-30X32-RB
84-30X36-1	30	36	1	54-30X36-R	54-30X36-RB
84-16X20-2	16	20	2	54-16X20-R	54-16X20-RB
84-16X25-2	16	25	2	54-16X25-R	54-16X25-RB
84-20X20-2	20	20	2	54-20X20-R	54-20X20-RB
84-20X25-2	20	25	2	54-20X25-R	54-20X25-RB
84-24X24-2	24	24	2	54-24X24-R	54-24X24-RB

## DYNAMIC CONSOLE ROOM UNITS



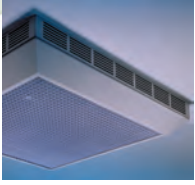
Extremely quiet and effective, Dynamic console air cleaners utilize the patented Dynamic Polarized Media Air Cleaner in an attractive cabinet for applications where a high efficiency air cleaner is needed in a confined space. Whether for a bedroom or a boardroom, the Dynamic console unit is engineered to do the job.

- Airflow Capacity: 500 CFM
- Dimensions: 23-3/4 in. height x 11 in. width x 26 in. depth
- Electrical supply: 120V, cord connected
- Weight: 43 lbs



PART NO	DESCRIPTION
84-CT500	Console Unit - 500 CFM
54-CT500-RB	Replacement Media (24 Pack)
54-CT500-R	Replacement Media (3 Pack)

## DYNAMIC OVERHEAD SMOKE-EATER UNITS



Dynamic overhead units provide commercial high efficiency air cleaning in a self-contained ceiling-mounted unit. The unit fits into common size drop-ceiling grids. Perfect for spaces where smoke is present such as restaurants, bars, boardrooms and cafeterias.



Ceiling-mount units use electronic polarized-media technology to remove fine particles, including smoke, and odors and VOCs. A quiet fan pulls air in through the air cleaner on the bottom of the unit and expels clean air from all four unit sides.

- Airflow Capacity: 750 CFM
- Dimensions: 23-3/4 in. x 23-3/4 in. x 9 in.
- Weight: 45 lbs
- Electrical Supply: 120 or 230V, 50/60Hz
- Power Consumption: 400W maximum
- Fan Control: 2 speed

PART NO	DESCRIPTION
84-1010-R	Overhead Unit - 750 CFM
54-1010-RB	Replacement Media (24 Pack)
54-1010-R	Replacement Media (3 Pack)

## OEM REPLACEMENT PERMANENT WASHABLE FILTERS



Custom sizes for replacement of filters shipped with Rheem, Ruud, and WeatherKing equipment.

PART NO	ACTUAL WIDTH (IN)	ACTUAL LENGTH (IN)	ACTUAL THICKNESS (IN)
54-40112-08	7-5/8	15-5/8	7/8
54-19655-10	10	25	1
54-42577-06	11-5/8	24-5/8	7/8
54-42577-02	11-7/8	17-7/8	7/8
54-42577-01	11-7/8	23-7/8	7/8
54-22699-01	12	20	3/8
68-101807-01	12-3/4	21	3/8
54-22699-02	14	20	3/8
54-19655-18	14	25	1
54-42577-05	15-5/8	24-5/8	7/8
54-24094-01	15-3/4	25	3/8
54-19655-25	16	20	1
54-19655-06	16	25	1
68-101807-02	16-1/4	21	3/8
54-40112-13	16-1/4	35-3/4	7/8
54-42577-07	16-1/4	35-3/4	7/8
54-19655-12	17	21-3/8	1
54-19655-21	17	25	1
54-24094-02	19-1/4	25	3/8
54-40112-07	19-5/8	15-5/8	7/8
68-101807-03	19-3/4	21	3/8
54-19655-13	22	23-7/8	1
54-24094-03	22-3/4	25	3/8
68-101807-04	23-1/4	21	3/8
54-42577-03	23-7/8	23-7/8	7/8
54-19655-19	24	25	1
54-40112-12	24-5/8	9-5/8	7/8
54-40112-11	24-5/8	11-5/8	7/8
54-40112-09	24-5/8	15-5/8	7/8

## DUST FREE DUSTFIGHTER 90 PERMANENT WASHABLE FILTERS



The Dust Free electrostatic air filter utilizes a patented configuration of alternate polarity self-charging layers of polypropylene filtration media to attract particles as small as 0.1 microns.



- Filter can be cleaned with water and mild detergent
- Each filter is individually packaged in clear plastic with instructional brochure

PART NO	NOMINAL WIDTH (IN)	NOMINAL LENGTH (IN)	NOMINAL THICKNESS (IN)
84-25127-110	7	29	1
84-25127-118	9-1/4	23-1/4	1
84-25127-84	10	20	1
84-25127-37	10	30	1
84-25127-73	11	23	1
84-25127-94	11-1/2	20	1
84-25127-112	11-3/4	11-3/4	1
84-25127-17	12	12	1
84-25127-147	12	18	1
84-25127-140	12	18	1
84-25127-01	12	20	1
84-25127-02	12	24	1
84-25127-127	12	25	1
84-25127-47	12	29-3/4	1
84-25127-75	12	30	1
84-25127-103	12	36	1
84-25127-129	12-1/2	20	1
84-25127-58	12-1/2	21	1
84-25127-67	12-1/2	30-3/4	1
84-25127-40	12-5/8	21	1
84-25127-106	12-3/4	20-3/4	1
84-25127-74	12-3/4	21	1
84-25127-124	12-3/4	22-1/2	1
84-25127-98	13	17-1/2	1
84-25127-134	13	20	1
84-25127-50	13	20-3/4	1
84-25127-33	13	21	1
84-25127-31	13	21-1/4	1
84-25127-57	13	21-1/2	1
84-25127-138	13	22	1
84-25127-03	13	25	1
84-25127-48	13-3/8	17-1/2	1
84-25127-141	13-1/2	15	1
84-25127-89	13-1/2	20	1
84-25127-142	13-1/2	21	1
84-25127-113	13-3/4	13-3/4	1
84-25127-32	14	14	1
84-25127-69	14	16	1
84-25127-126	14	18	1
84-25127-04	14	20	1
84-25127-130	14	22-1/2	1
84-25127-44	14	23-1/2	1
84-25127-05	14	24	1
84-25127-06	14	25	1
84-25127-62	14	28	1
84-25127-07	14	30	1

*(continued on next page)*

## DUST FREE DUSTFIGHTER 90 PERMANENT WASHABLE FILTERS CONTINUED

PART NO	NOMINAL WIDTH (IN)	NOMINAL LENGTH (IN)	NOMINAL THICKNESS (IN)
84-25127-78	14	32	1
84-25127-64	14-1/2	21	1
84-25127-149	15	16	1
84-25127-35	15	20	1
84-25127-117	15	20	2
84-25127-66	15	21	1
84-25127-27	15	22	1
84-25127-139	15	22-1/2	1
84-25127-28	15	23	1
84-25127-125	15-1/4	21-1/2	1
84-25127-121	15-1/2	15-1/2	1
84-25127-59	15-1/2	18-1/2	1
84-25127-150	15-1/2	23-1/2	1
84-25127-104	15-1/2	24-1/2	1
84-25127-133	15-1/2	26	1
84-25127-56	15-3/4	17-3/4	1
84-25127-99	15-7/8	35-3/4	1
84-25127-24	16	16	1
84-25127-18	16	16	2
84-25127-63	16	19	1
84-25127-08	16	20	1
84-25127-116	16	20	2
84-25127-54	16	21	1
84-25127-122	16	22-1/4	1
84-25127-135	16	22-3/4	1
84-25127-09	16	24	1
84-25127-10	16	25	1
84-25127-20	16	25	2
84-25127-46	16	28	1
84-25127-91	16	30	1
84-25127-43	16-1/8	21-1/4	1
84-25127-53	16-1/4	21	1
84-25127-72	16-3/8	21-1/2	1
84-25127-86	16-1/2	21	1
84-25127-90	16-1/2	21-1/4	1
84-25127-128	16-1/2	21-1/2	1
84-25127-95	16-1/2	21-3/4	1
84-25127-55	16-1/2	25	1
84-25127-61	17	19	1
84-25127-96	17	21-1/2	1
84-25127-60	17	22	1
84-25127-107	17-3/4	27-3/4	1
84-25127-23	18	18	1
84-25127-19	18	18	2
84-25127-87	18	20	1
84-25127-137	18	23	1
84-25127-11	18	24	1
84-25127-81	18	25	1
84-25127-136	19	20	1
84-25127-30	19	22	1
84-25127-51	19	23	1
84-25127-131	19	25	1
84-25127-111	19-1/4	23-1/4	1

(continued on next page)

## DUST FREE DUSTFIGHTER 90 PERMANENT WASHABLE FILTERS CONTINUED

PART NO	NOMINAL WIDTH (IN)	NOMINAL LENGTH (IN)	NOMINAL THICKNESS (IN)
84-25127-77	19-1/2	20-3/4	1
84-25127-79	19-1/2	21	1
84-25127-52	19-1/2	23	1
84-25127-105	19-1/2	24-1/2	1
84-25127-41	19-3/4	21	1
84-25127-12	20	20	1
84-25127-83	20	20	2
84-25127-80	20	20-1/8	1
84-25127-151	20	20-1/4	1
84-25127-152	20	21-1/2	1
84-25127-88	20	22	1
84-25127-93	20	22-1/2	1
84-25127-154	20	23-1/4	1
84-25127-34	20	24	1
84-25127-45	20	24-1/4	1
84-25127-13	20	25	1
84-25127-115	20	25	2
84-25127-14	20	30	1
84-25127-68	20-1/2	21-1/2	1
84-25127-120	20-1/2	45-1/2	1
84-25127-36	20-3/4	22-3/4	1
84-25127-42	20-3/4	23	1
84-25127-76	20-7/8	23-3/8	1
84-25127-71	21	23	1
84-25127-70	21	23-1/2	1
84-25127-82	21	25	1
84-25127-144	21	36-1/2	1
84-25127-101	21-1/2	23-1/4	1
84-25127-153	21-1/2	23-1/2	1
84-25127-97	22	22	1
84-25127-145	22	24	1
84-25127-146	22	24	1
84-25127-29	22	25	1
84-25127-102	22	27	1
84-25127-119	23	23	1
84-25127-15	23	25	1
84-25127-123	23-3/4	23-3/4	1
84-25127-16	24	24	1
84-25127-132	24	25	1
84-25127-108	24	25-1/2	1
84-25127-109	24	25-1/2	2
84-25127-22	24	30	1
84-25127-100	24	36	1
84-25127-25	25	25	1
84-25127-21	25	25	2
84-25127-65	25	30	1
84-25127-26	26	26	1
84-25127-85	26-1/2	35-1/4	1
84-25127-49	28	28	1
84-25127-114	28	34	1
84-25127-143	30	32	1
84-25127-38	30	36	1

