

Job Name \_\_\_\_\_  
 Purchaser \_\_\_\_\_  
 Submitted to \_\_\_\_\_  
 Unit Designation \_\_\_\_\_

Location \_\_\_\_\_  
 Engineer \_\_\_\_\_  
 Reference \_\_\_\_\_ Approval \_\_\_\_\_ Construction \_\_\_\_\_  
 Schedule # \_\_\_\_\_

### Specifications

Power	Voltage (øV/Hz)		1 / 208-230 / 60
	Maximum Ampacity (A)		1.0
Connectable Capacity	Btu/h	3 X	18,000 - 24,000
Piping Connections (inches)	Supply Pipes In (flare)	Liquid	3/8
		Suction	3/4
	To Indoor Unit (flare)	A - Expanded Gas	3/8
		A - Suction	5/8
		B - Expanded Gas	3/8
		B - Suction	5/8
		C - Expanded Gas	3/8
		C - Suction	5/8
Condensate Drain Line		ID 1/2", OD 11/16"	
Maximum length from EEV kit to each indoor unit (feet)			65
Unit Dimensions	Width	Inches	19 5/8
	Height	Inches	8 1/16
	Depth	Inches	7 1/2
	Weight	lbs.	17
Refrigerant Type			R410A
Safety Certifications			ETL & ETLc



- Electronic expansion valve kit for use with 3 wall-mounted (AM0\*\*\*NTDCH) and/or under-ceiling (AM0\*\*\*NCDCH) evaporators
- Compatible with Samsung DVM S and Mini DVM systems only (AM\*\*\*\*X\*\*\*H/AA and AM\*\*\*\*XW\*\*\*\*R/AA when configured as a heat pump system)
- Installs external to evaporator cabinet
- PCB shall contain high voltage fuses

#### Construction

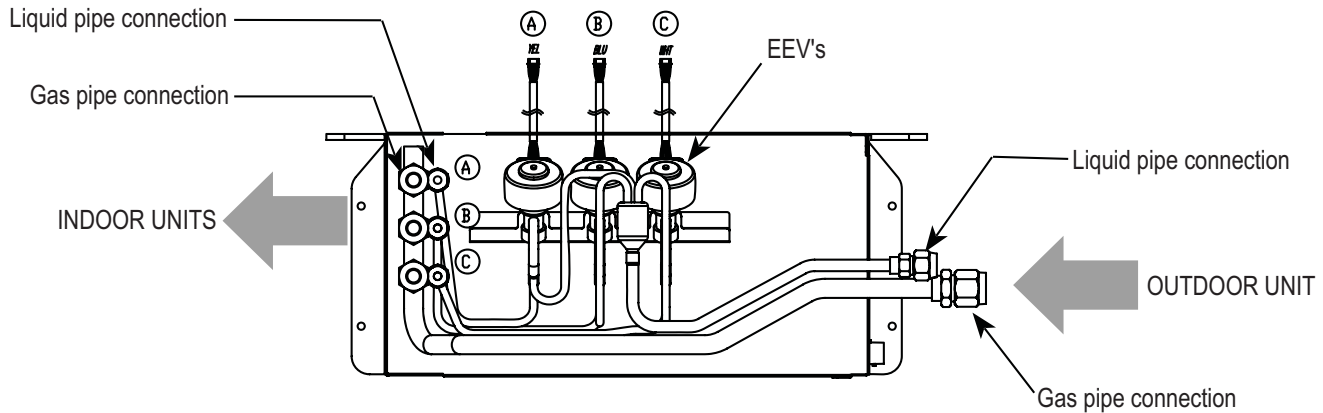
Galvanized steel chassis

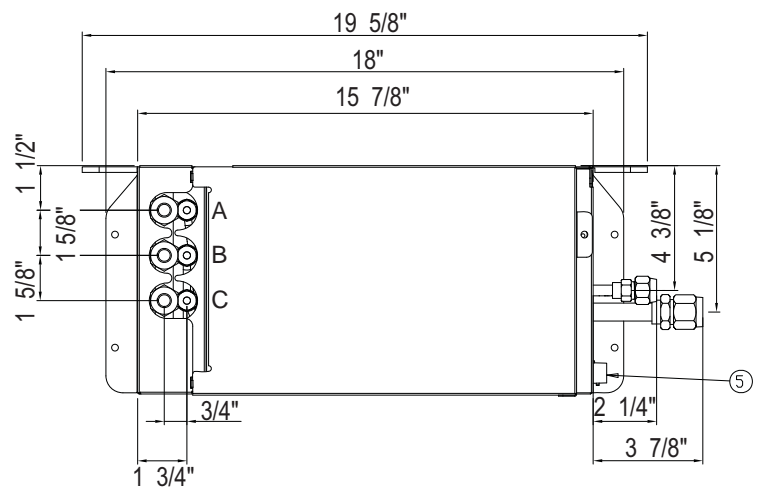
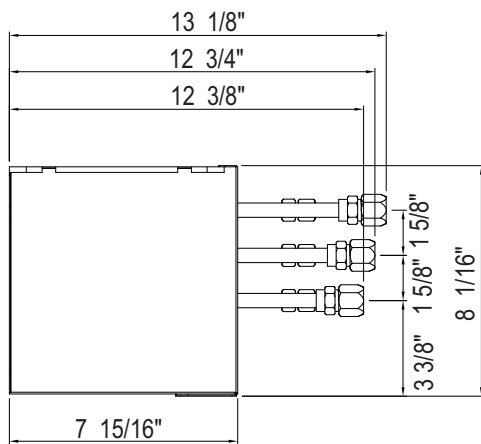
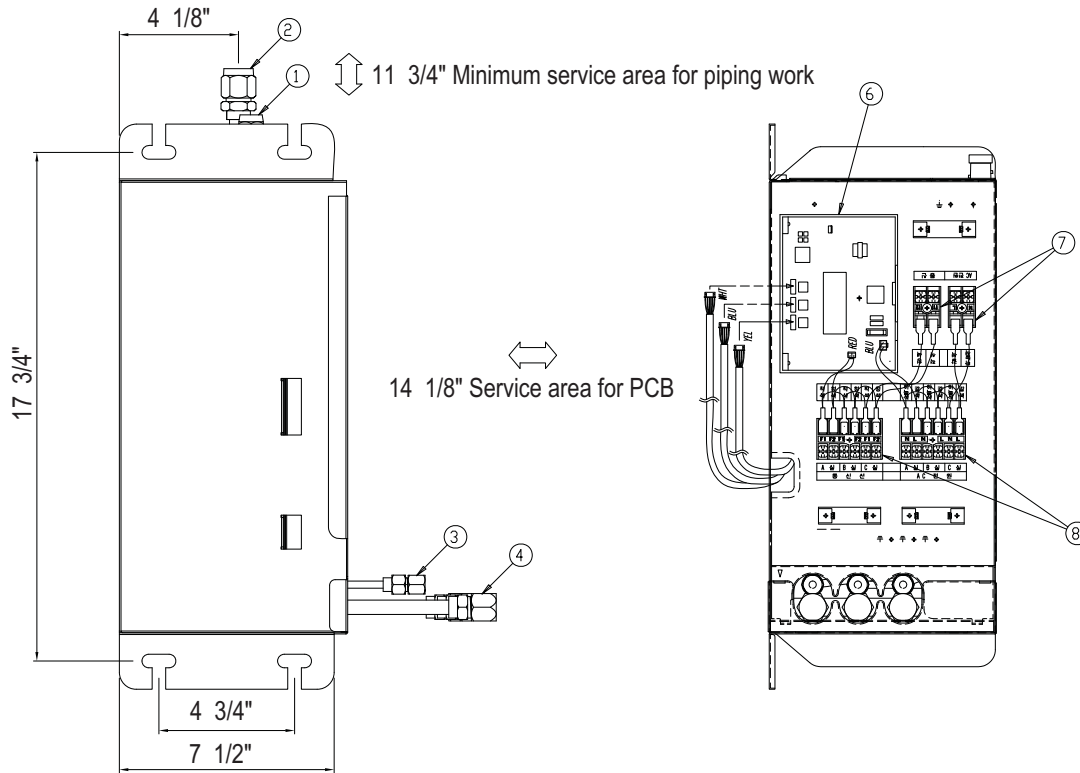
#### Controls

The unit shall be operated via a DDC type signal

Controlled through main system communication wires (COM 1, F1/F2)

Must mount level to facilitate proper condensation drainage and internal refrigerant flow





No.	Name
1	Liquid pipe connection from branch joint or outdoor unit
2	Gas pipe connection from branch joint or outdoor unit
3	Liquid pipe connections to wall mounted/ceiling units
4	Gas pipe connections to wall mounted units/ceiling units
5	Condensate pipe connection (ID 1/2" / OD 11/16")
6	PCB
7	Power and communication wiring terminals from outdoor unit
8	Power and communication wiring terminals from outdoor unit