



# Product Data

---

**Split System (R-410A)  
Air Handler for Multi Split  
Inverter System  
12,000 to 24,000 BTU/Hr**

---



**Cassette Type Indoor Unit:**

4MXC8512A10N0AA

4MXC8518A10N0AA

4MXC8524A10N0AA

**Cassette Cover:**

4MXL8518A10N0AA - Sold with 4MXC8512 & 4MXC8518

4MXL8524A10N0AA - Sold with 4MXC8524

# It's Hard to Stop a Trane.

## **Split System (R-410A, 60Hz) 16 SEER, Inverter System - 12,000 to 24,000 BTU/Hr**

Whatever their specific heating and cooling needs, people trust Trane to provide reliable efficient solutions. Trane Ductless Systems allow you to create a comfortable indoor environment in spaces where adding ductwork might be impractical or too expensive, or not as efficient as a ductless option.

Retrofit a house that doesn't have a ducted system or where the central system is already at capacity. Bring efficient, economical comfort to new room additions. Provide spot heating and cooling that operates independently of the central system. Utilize ductless efficiency for new construction projects where ductless systems make more sense than a traditional ducted system. .

Easy to install Trane Ductless Systems offer flexibility in design and provide efficiency and economy with two simple components - an outdoor unit and one or more stylish, low profile, indoor units. All built with Trane's legendary reliability and innovative thinking.

## **Introducing the new TRANE Split System Family**



### **4MXC High Efficiency Cassette Indoor Unit**

#### **Quiet Operation**

Specially designed air vent efficiently reduces operation noise to provide quiet comfort, as low as 35 dB.

#### **Built-in Drain Pump**

Easily drain condensation from the unit with the built-in drain pump.

#### **Compact Design**

The compact construction and simple structure make the cassette model easy to install and maintain.

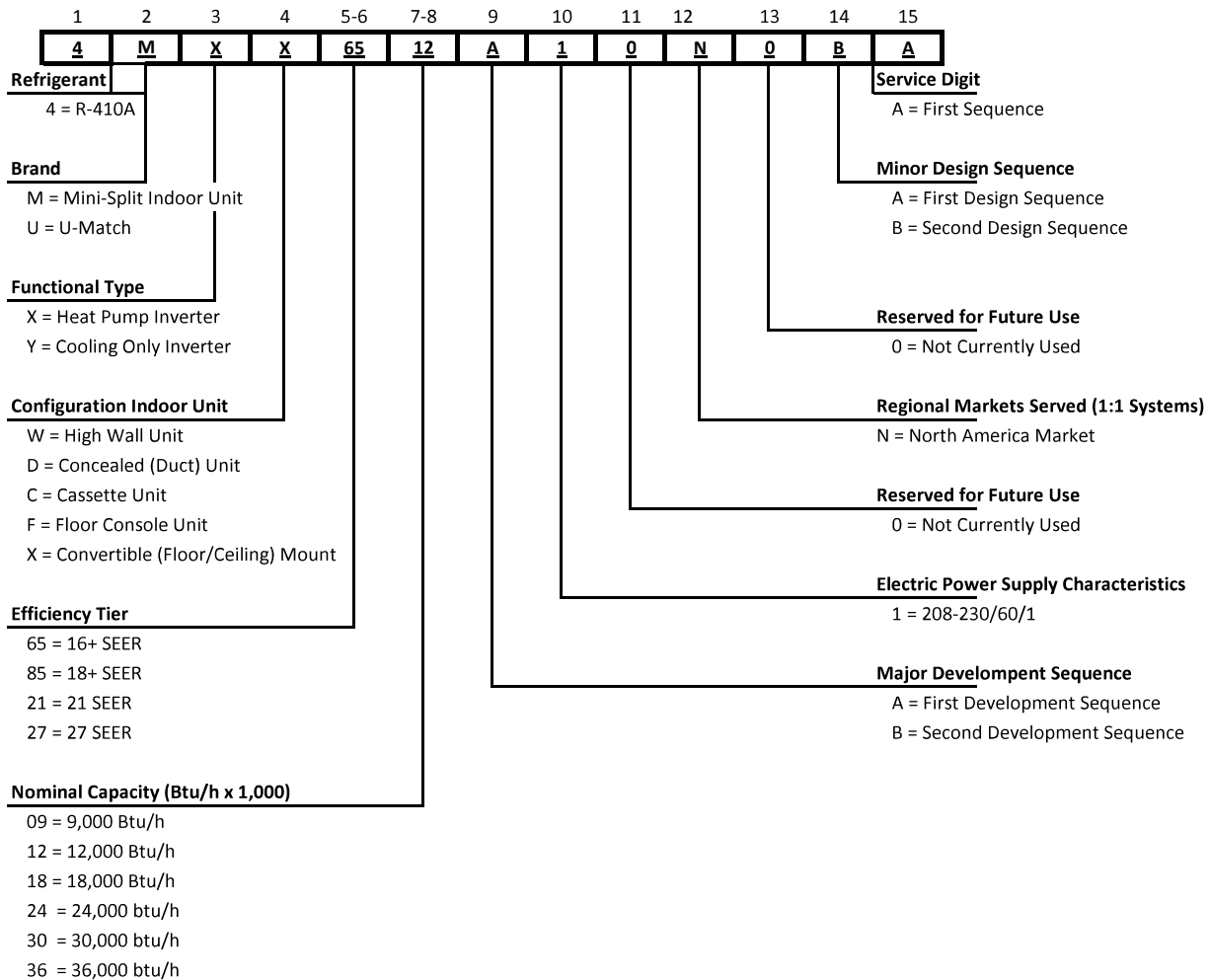
#### **Washable Filter**

To reduce moisture on filter and provide fresh, healthy air into the room, clean filter regularly with water.

# Contents

<b>Model Nomenclature</b>	<b>3</b>
<b>General Data</b>	<b>4-5</b>
<b>Unit Dimensions</b>	<b>6-7</b>
<b>Mechanical Specifications</b>	<b>8</b>

## INDOOR UNIT MODEL NOMENCLATURE



# General Data

MODEL - Cassette	4MXC8512A10N0AA *	4MXC8518A10N0AA *
RATED Volts/PH	208 / 230 / 1	208 / 230 / 1
Frequency (Hz)	60Hz	60Hz
Total Cooling Capacity (Btu/h)	12000	14400
Total Heating Capacity (Btu/h)	13000	16000
Air Flow Volume (CFM) (H/M/L)	353 / 294 / 265	353 / 294 / 265
Sound Power Level dB(A) (H/M/L)	56 / 52 / 47	56 / 52 / 47
Sound PRESSURE Level dB(A) (H/M/L) ①	46 / 42 / 37	46 / 42 / 37
Dehumidifying Volume (pint/h)	2.96	3.8
PCB Fuse Current (A)	PCB 3.15A Transformer 0.2A	PCB 3.15A Transformer 0.2A
Fan Quantity	1	1
Fan Type	Centrifugal	Centrifugal
Motor Full Load Amp (FLA)	0.23	0.23
Fan Motor Drive Type	Direct Drive	Direct Drive
Fan Motor Speed (RPM) (H/M/L)	845 / 700 / 600	845 / 700 / 600
Evaporator Face Area (ft <sup>2</sup> )	2.05	2.05
Evaporator Fin Type	Hydrophilic film-louver fin	Hydrophilic film-louver fin
Evaporator Fin Color - Blue/Not Blue	Blue	Blue
Air Filter Size (L x W / No.)	13.56 x 13.13 / 1	13.56 x 13.13 / 1
Gas Pipe (to indoor unit) (inch)	3/8	1/2
Liquid Pipe (inch)	1/4	1/4
Connection Method	Flare Connection	Flare Connection
Drain Connection (inner diameter)(inch)	1.0	1.0
Dimension (Uncrated) (W x D x H)	22.44 x 22.44 x 9.06	22.44 x 22.44 x 9.06
Dimension (Crated) (L x W x H)	33.39 x 28.66 x 12.20	33.39 x 28.66 x 12.20
Net Weight (lbs)	39.7	39.7
Gross Weight (lbs)	50.7	50.7
Panel Outline Dimension (W x D x H)	25.59 x 25.59 x 1.97	25.59 x 25.59 x 1.97
Panel Net Weight (lbs)	5.50	5.50

① Sound PRESSURE Level @ 3.3 ft. dB(A)

**\* Order cassette cover 4MXL8518A10N0AA (Sold Separately)**

# General Data

**MODEL - Cassette**

**4MXC8524A10N0AA \*\***

---

RATED Volts/PH	208 / 230 / 1
Frequency (Hz)	60Hz
Total Cooling Capacity (Btu/h)	22800
Total Heating Capacity (Btu/h)	27400
Air Flow Volume (CFM) (H/M/L)	694 / 560 / 500
Sound Power Level dB(A) (H/M/L)	49 / 47 / 45
Sound PRESSURE Level dB(A) (H/M/L) ①	39 / 37 / 35
Dehumidifying Volume (pint/h)	5.28

---

PCB Fuse Current (A)	PCB 3.15A Transformer 0.2A
Fan Quantity	1
Fan Type	Centrifugal
Motor Full Load Amp (FLA)	0.43
Fan Motor Drive Type	Direct Drive
Fan Motor Speed (RPM) (H/M/L)	620 / 570 / 520

---

Evaporator Face Area (ft2)	3.77
Evaporator Fin Type	Hydrophilic film-louver fin
Evaporator Fin Color - Blue/Not Blue	Blue
Air Filter Size (L x W / No.)	21.38 x 21.34 / 2
Gas Pipe (to indoor unit) (inch)	5/8
Liquid Pipe (inch)	3/8
Connection Method	Flare Connection
Drain Connection (inner diameter)(inch)	1.0

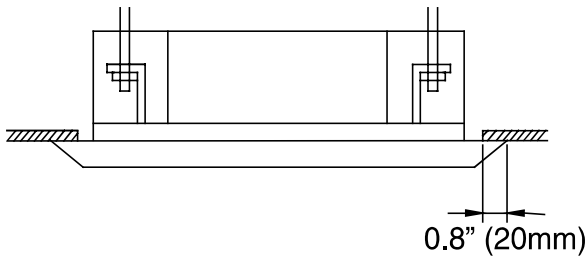
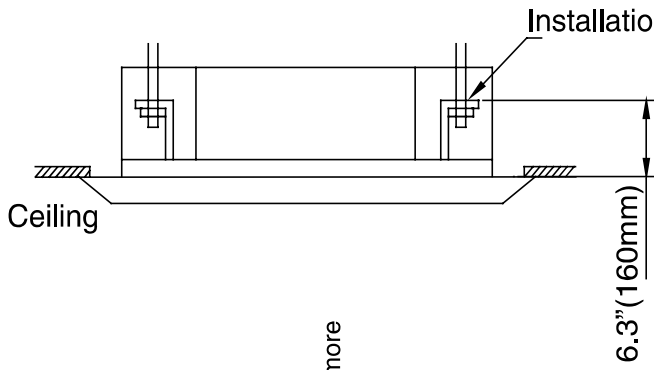
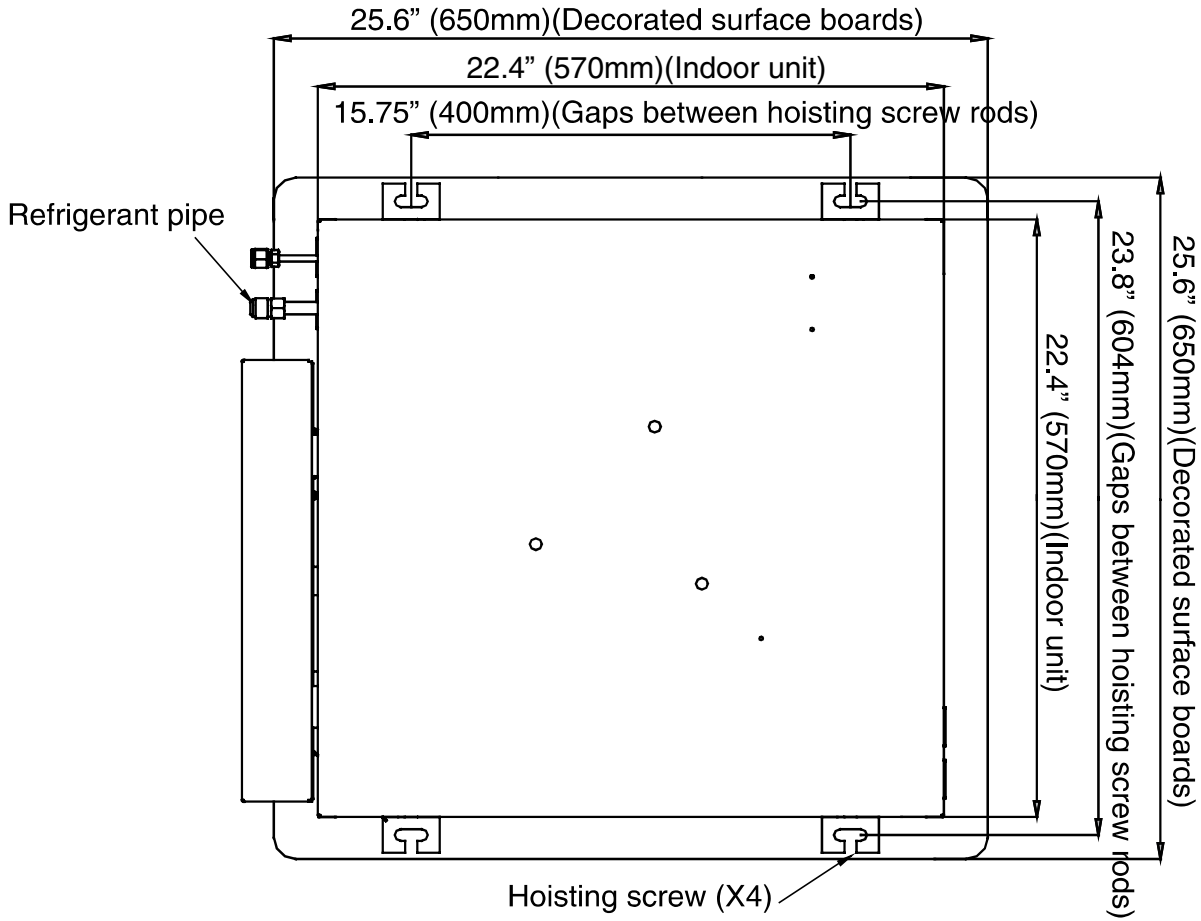
---

Dimension (Uncrated) (W x D x H)	33.07 x 33.07 x 9.45
Dimension (Crated) (L x W x H)	37.80 x 37.80 x 12.20
Net Weight (lbs)	66.1
Gross Weight (lbs)	83.8
Panel Outline Dimension (W x D x H)	37.40 x 37.40 x 2.36
Panel Net Weight (lbs)	14.33

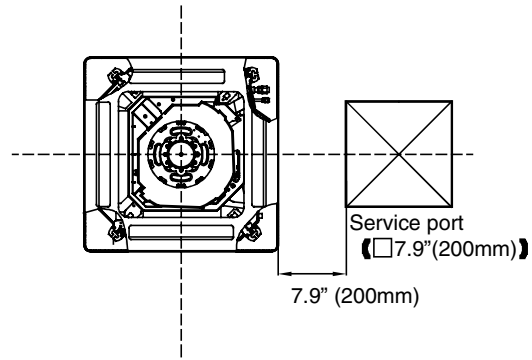
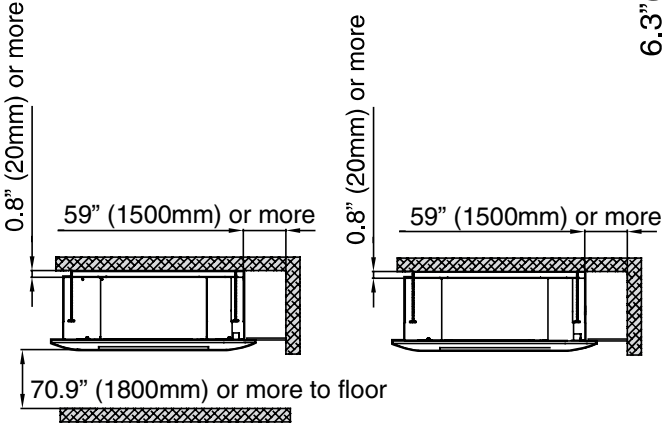
① Sound PRESSURE Level @ 3.3 ft. dB(A)

**\*\* Order cassette cover 4MXL8524A10N0AA (Sold Separately)**

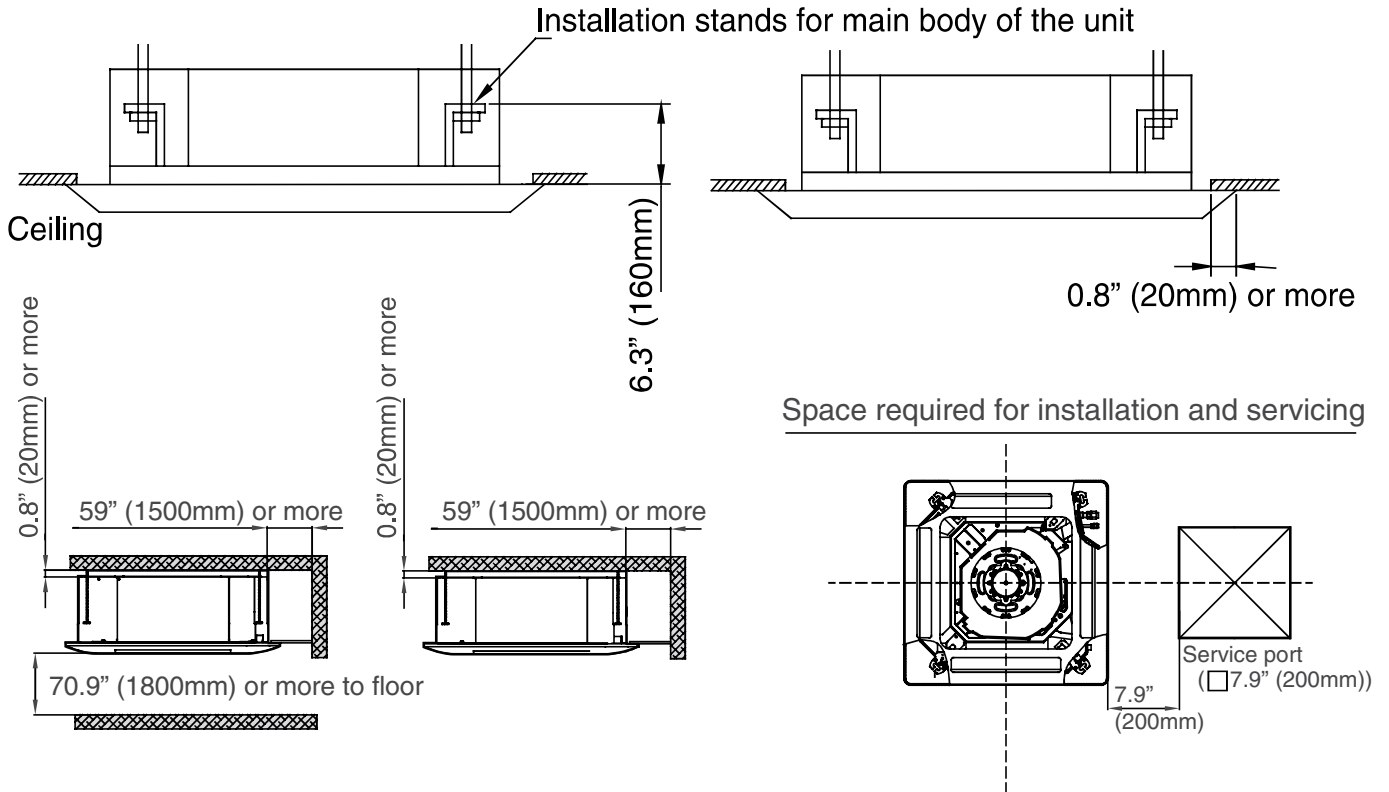
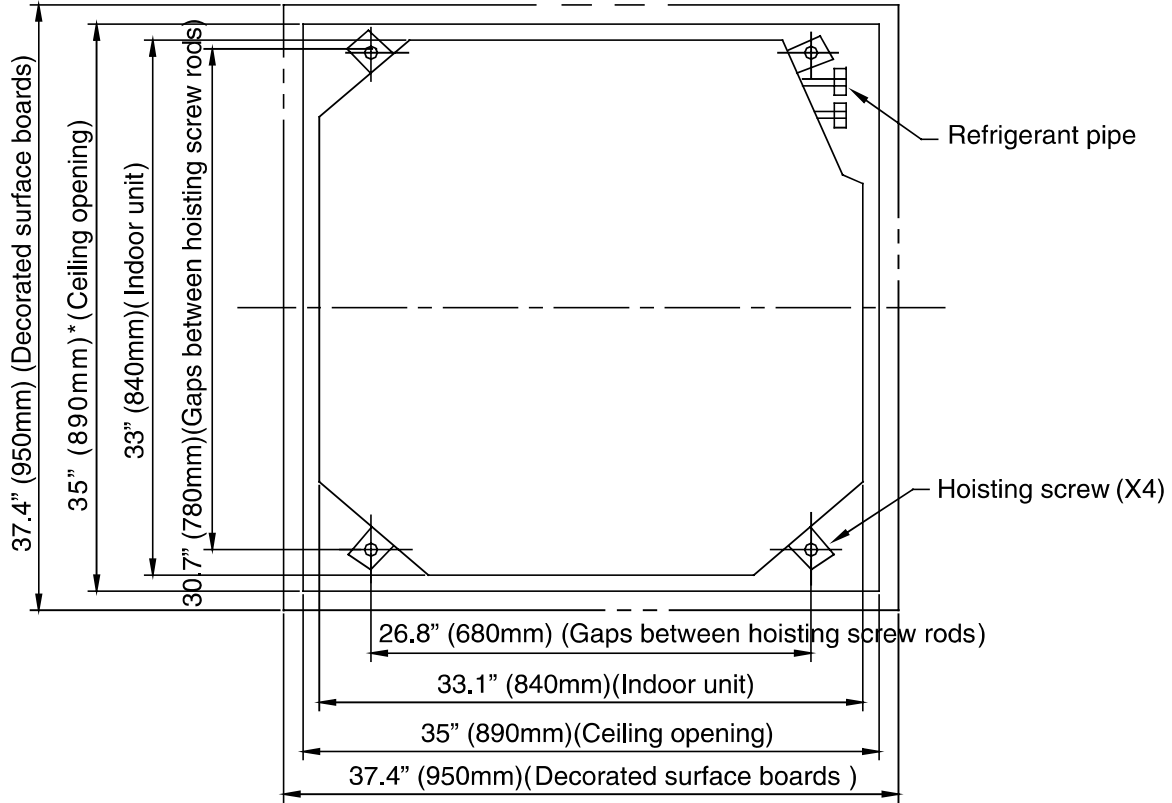
# Unit Dimensions 4MXC8512A-4MXC8518A



Space required for installation and servicing



# Unit Dimensions 4MXC8524A



# Mechanical Specifications

---

## Cassette Type Indoor Unit

### General

The Cassette type air handler shall be completely factory assembled including coil, condensate drain pan, built-in condensate drain pump, fan motor, washable filter, and electric controls to be used with a wired controller. Unit shall be matched with a Trane outdoor unit, rated and tested in accordance with AHRI standard. Unit shall be ETL listed.

### Unit Casing

Casing shall be provided with drain hose to facilitate piping and electrical connection on the right of the unit. An electrical service cover shall be provided to permit easy access to the electrical terminal strip.

### Discharge Airflow and Distribution System

Unit shall have auto swing, horizontal blades on each of the units four sides to optimize the aperture outlet for airflow and air distribution. Blades shall close automatically when the air conditioner is turned off to minimize dust entering the unit. Five-Step preset program on the remote controller shall be available to control the blade angle.

Manually adjusted wide-angle louvers shall be provided to adjust the coverage and direction of airflow.

### Controls

Units shall have the capability to be controlled with the supplied wired control unit. The optional wireless remote may be used to operate the wall mounted control.

### Remote Controller

The unit may have an optional wireless infrared remote controller with easy reading digital display panel to start, stop and regulate the supplied wired control from a distance.

The wireless controller is available for all units. **(Sold separately)**

### Washable Filtration

The unit shall have an easy clean, washable filter which allows for cleaning when needed. Clean filters provide optimum efficiency and fresh air into the room.

