



**GE APPLIANCES**  
*a Haier company*

# Product Specifications

**NF80UV**  
80% 2 Stage Variable  
Speed Gas Furnace



**READ CAREFULLY.  
KEEP THESE INSTRUCTIONS.**

# NF80UV

## PRODUCT SPECIFICATIONS

---

### **CONFIGURATIONS**

- Upflow/Horizontal only

### **HEAT EXCHANGER DESIGN**

- Crimped no-weld aluminized clam shell heat exchanger construction

### **CABINET DESIGN**

- Compact 33" height
- Standardized widths for easy coil fit

### **AIR DELIVERY SYSTEM**

- ECM Variable Speed Blower Motor
- Easily removable slide-out blower design

### **CONTROLS**

- Two stage gas valve
- Self diagnostics saves last 5 fault codes regardless of power interruption

### **INSTALLATION FEATURES**

- Left or right utility connections
- Removable floor base for bottom return air
- Zero step horizontal conversion

### **VENTING**

- Rotatable draft inducer for venting flexibility

### **WARRANTY**

See warranty document for details.

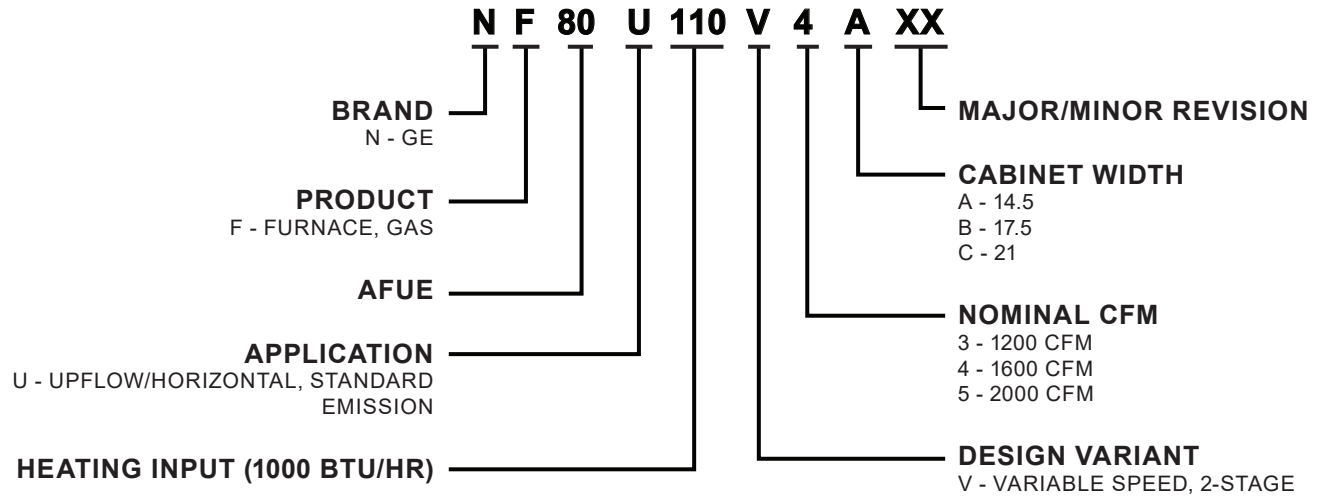
**Note:** Not for sale in Canada

#### **California Only**

These furnaces do not meet the South Coast Air Quality Management District (SCAQMD) Rule 1111 and San Joaquin Valley Air Pollution Control District (SJVAPCD) Rule 4905 NOx emission limit (14 NG/J) and cannot be installed within the SCAQMD and SJVAPCD areas.



**MODEL NUMBER GUIDE**



**PHYSICAL AND ELECTRICAL DATA**

	Model	Input (Btuh)	Output* (Btuh)	AFUE (ICS)	Nom. Cooling Capacity	Gas Inlet (in.)	Volts/ Hz/ Phase	Min. Time Delay Breaker or Fuse	Nominal F.L.A.	Trans. (V.A.)	Approx. Shipping Weight (lbs.)
<b>UPFLOW / HORIZONTAL</b>	NF80U070V3A	66,000	52,000	80.0%	3 tons	1/2	120-60-1	15	7.7	40	128
	NF80U090V4B	88,000	70,000	80.0%	4 tons	1/2	120-60-1	20	12.8	40	154
	NF80U110V5C	110,000	87,000	80.0%	5 tons	1/2	120-60-1	20	12.8	40	181

**Note:** For vent length and clearances to combustibles, please reference installation instructions.

\* Outputs shown are High Fire, 100% rate, Low Fire is 67% of shown output.

**BLOWER PERFORMANCE DATA BOTTOM INLET**

Model	Motor Size (hp)	Blower Size	Temp Rise F°	Speed Adjustment	Heating CFM @ 0" - 0.5" w.c.				Cooling Stages	Speed Adjustment	Cooling CFM @ 0" - 0.8" w.c.				
					Setting "A"	Setting "B"	Setting "C"	Setting "D"			Setting "A"	Setting "B"	Setting "C"	Setting "D"	
UPFLOW / HORIZONTAL	NF80U070V3A	1/2 HP	10 x 8	High Fire 40 - 70	+	1129	1027	990	787	2nd Stage	+	1335	1215	1080	995
					Norm	1026	934	900	715		Norm	1225	1105	985	920
					-	923	841	810	644		-	1100	995	905	820
				Low Fire 25 - 55	+	1031	926	829	747	1st Stage	+	965	865	785	735
					Norm	937	842	754	679		Norm	885	795	735	690
					-	843	758	679	611		-	790	755	685	650
	NF80U090V4B	1 HP	11 x 9	High Fire 40 - 70	+	1646	1529	1518	1187	2nd Stage	+	1755	1545	1335	1030
					Norm	1496	1390	1380	1079		Norm	1600	1405	1200	940
					-	1346	1251	1242	971		-	1435	1260	1060	790
				Low Fire 25 - 55	+	1539	1398	1136	1096	1st Stage	+	1210	1035	890	665
					Norm	1399	1271	1033	996		Norm	1090	960	810	600
					-	1259	1144	930	896		-	985	850	690	525
NF80U110V5C	1 HP	11 x 10	High Fire 35 - 65	+	2175	1950	1935	1546	2nd Stage	+	2205	1905	1705	1535	
				Norm	1977	1773	1759	1405		Norm	2015	1710	1560	1400	
				-	1779	1596	1583	1265		-	1810	1555	1395	1260	
			Low Fire 25 - 55	+	1977	1783	1497	1431	1st Stage	+	1560	1355	1230	1065	
				Norm	1797	1621	1361	1301		Norm	1425	1205	1085	955	
				-	1617	1459	1225	1171		-	1265	1075	960	845	

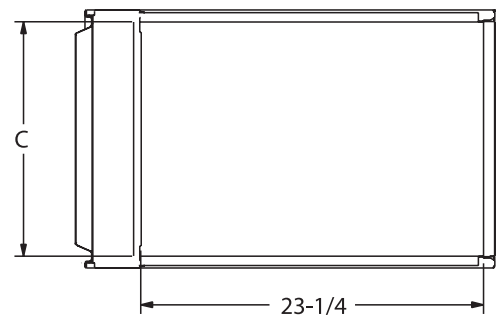
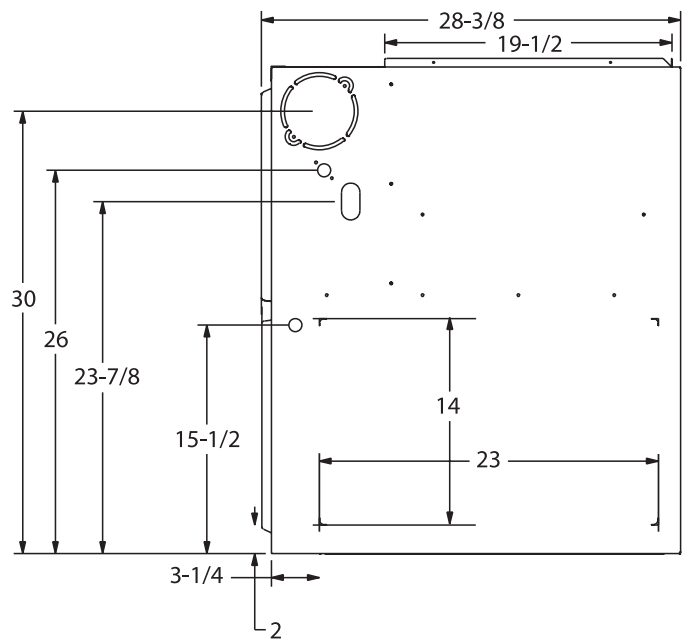
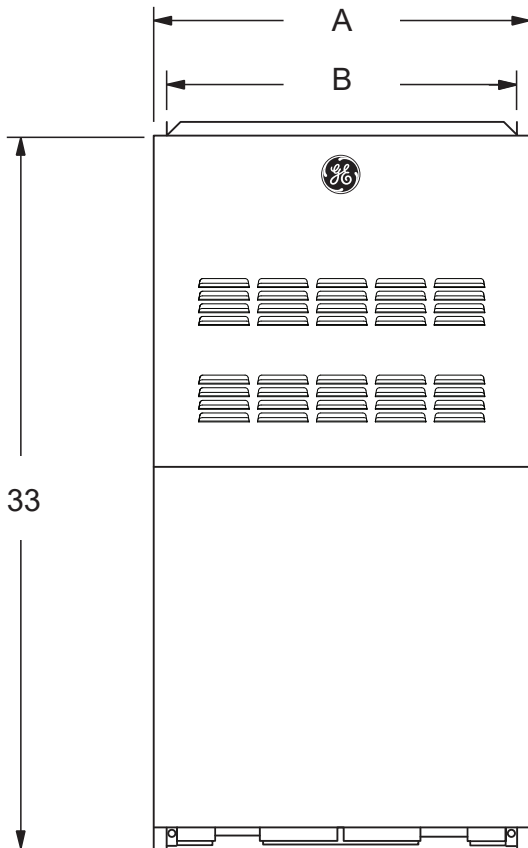
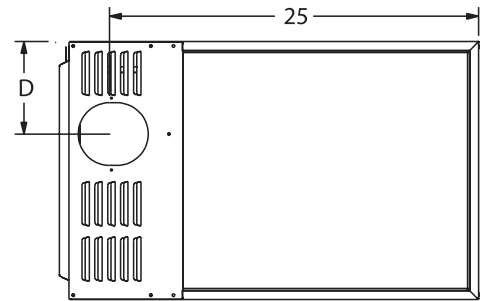
**BLOWER PERFORMANCE DATA SIDE INLET**

Model	Motor Size (hp)	Blower Size	Temp Rise F°	Speed Adjustment	Heating CFM @ 0" - 0.5" w.c.				Cooling Stages	Speed Adjustment	Cooling CFM @ 0" - 0.8" w.c.				
					Setting "A"	Setting "B"	Setting "C"	Setting "D"			Setting "A"	Setting "B"	Setting "C"	Setting "D"	
UPFLOW / HORIZONTAL	NF80U070V3A	1/2 HP	10 x 8	High Fire 40 - 70	+	1114	1018	979	778	2nd Stage	+	1345	1218	1097	1010
					Norm	1013	925	890	707		Norm	1213	1104	1003	926
					-	912	833	801	636		-	1106	1013	893	820
				Low Fire 25 - 55	+	1044	950	825	740	1st Stage	+	916	848	767	735
					Norm	949	864	750	673		Norm	859	795	726	689
					-	854	778	675	606		-	781	727	677	635
	NF80U090V4B	1 HP	11 x 9	High Fire 40 - 70	+	1667	1533	1522	1183	2nd Stage	+	1672	1498	1296	1006
					Norm	1515	1394	1384	1075		Norm	1499	1346	1158	897
					-	1364	1255	1246	968		-	1406	1210	1049	795
				Low Fire 25 - 55	+	1539	1398	1136	1096	1st Stage	+	1174	1013	901	638
					Norm	1399	1271	1033	996		Norm	1040	930	778	571
					-	1259	1144	930	896		-	956	809	698	529
NF80U110V5C	1 HP	11 x 10	High Fire 35 - 65	+	2094	1925	1880	1505	2nd Stage	+	2011	1857	1688	1506	
				Norm	1904	1750	1709	1368		Norm	1843	1687	1526	1375	
				-	1714	1575	1538	1231		-	1640	1503	1382	1235	
			Low Fire 25 - 55	+	1903	1730	1455	1375	1st Stage	+	1420	1286	1160	1019	
				Norm	1730	1573	1323	1250		Norm	1277	1154	1048	942	
				-	1557	1416	1191	1125		-	1116	1020	944	836	

**Note:** See installation instructions for Return Air configurations and proper blower setup.

**DIMENSIONS**

	Model	A	B	C	D
UPFLOW / HORIZONTAL	NF80U070V3A	14-1/2	13-3/8	13	4-3/4
	NF80U090V4B	17-1/2	16-3/8	16	6-1/4
	NF80U110V5C	21	19-7/8	19-1/2	8



**ACCESSORY LIST**

CATALOG NUMBER	DESCRIPTION
Return Air Base	
68W61	14.5", A Width
68W62	17.5", B Width
68W63	21.0", C Width

**Note:** For vent length and clearances to combustibles, please reference installation instructions.

		Natural Gas High Altitude Conversion Kit			Pressure Switch			LP High Alt. Conversion Kit		
MODEL NUMBER	Description	0-4500	4500-7500	7500-10,000	0-4500	4500-7500	7500-10,000	0-4500	4500-7500	7500-10,000
NF80U070V3A	80% Upflow 2-Stage Variable Speed	Not Required	51W01	Not Required	69W56	73W35	11K48	11K47		
NF80U090V4B										
NF080U110V5C										





**GE APPLIANCES**  
*a Haier company*

All specifications and illustrations subject to change without notice and without incurring obligations.