



**SUBMITTAL EH052CAV / UH052CAV**  
Slim Duct, single zone split system

Job Name	Location		
Purchaser	Engineer		
Submitted to	Reference	Approval	Construction
Unit Designation	Schedule #		

**Specifications**

Performance	Nominal Capacity	Cooling/Heating (Btu/h)	18,000 / 20,500	
	Capacity Range	Cooling (Btu/h)	5,500 - 21,000	
		Heating (Btu/h)	5,800 - 30,700	
	SEER / EER			13.6 / 10.9
	HSPF			8.5
	Condensate (pints/hour)			3.4
Power	Voltage (øV/Hz)		1 / 208-230 / 60	
	Rated Current (Low/Std./Max.)	Cooling (A)	2.3 / 7.0 / 9.2	
		Heating (A)	2.6 / 8.2 / 14.5	
	Max. Breaker			35 A
Min. Circuit Ampacity			20 A	
Dimensions	W X H X D (inches)	Indoor Unit	43 3/8 X 7 13/16 X 23 5/8	
		Outdoor Unit	34 5/8 X 25 1/8 X 12 1/4	
	Weight (lbs.)	Indoor Unit	68	
		Outdoor Unit	110	
	Supply duct connection (inches)			6 X 41 3/4
	Return duct connection (inside, inches)			6 5/8 X 38 1/4
Condensate Connection			OD 1 1/4", ID 1"	
Heat Exchanger	Indoor & Outdoor Unit	Type	Aluminum Fin - Copper Tube	
		FPI	18	
		Pipe Diameter	1/4 inch	
Sound Pressure Level (dB)	Indoor Unit (high)		33	
	Outdoor Unit (high)		49	
Operating Temperatures	Cooling	°F	14 ≤ T ≤ 115	
	Heating	°F	- 4 ≤ T ≤ 75	
Pipe Connections	Indoor & Outdoor	High side (flare)	1/4"	
		Low side (flare)	1/2"	
	Maximum Line Set Length		98 ft.	
	Maximum Vertical Separation		49 ft.	
Oil Trap			Every 26' of vertical separation	
Refrigerant	Type		R410A	
	Control Method		Electronic Expansion Valve	
	Factory Charge (oz)		51.2	
	Charged for		25 ft.	
Additional Refrigerant			0.2 oz/ft over 25'	
Compressor	Manufacturer		Samsung	
	Type		DC, Inverter Driven, Twin Rotary	
	RLA (A)		15.0	
Evaporator Fan	Type		Sirocco (3)	
	Air Volume (CFM)	Cooling (high)	512	
		Heating (high)	565	
	External Static Pressure	Standard/max. (WC)	0.08 / 0.125	
Condenser Fan	Motor		BLDC With Axial Type Fan (1)	
	Output	W	130	
	FLA	Amps	0.6	
Accessories	Samsung condensate pump		MDP-E075SEE	
	Wireless Remote Control	Wireless remote	MR-AH01U	
		Wire from receiver to unit	MRW-10AU	
		Wireless signal receiver	MRK-A00U	
Line sets - insulated and flared, interconnect cables included			25' - ILS2507 50' - ILS5007	
Safety Certifications			ETL & ETLc	
Warranty	5 Years compressor, 3 Year Parts, 120 Day limited labor			



EH052CAV



UH052CAV

- Low ambient control built in
- Outdoor unit shall provide 208/230V power to indoor unit via 14AWG X 3 interconnect power cable
- Wired controller ships as standard

**Construction**

Indoor unit chassis shall be constructed from galvanized steel

The outdoor unit shall be galvanized steel with a baked on powder coated finish for durability

**Heat Exchanger**

The heat exchanger shall be mechanically bonded fin to copper tube

**Refrigerant System**

The compressor shall be hermetically sealed, inverter controlled, Twin BLDC Rotary

Refrigerant flow shall be controlled by EEV (electronic expansion valve) at outdoor unit

**Indoor Fan**

Indoor fans are twin backward curved centrifugal Sirocco type with a single BLDC motor

Three fan speed settings and auto setting

**Controls**

Control signal shall be DDC type signal

Interconnect control wiring shall be 16AWG X 2 shielded wire between outdoor and indoor units

Unit shall be operated via wired or wireless controller

Nominal cooling capacities are based on: Indoor temperature: 80°F DB, 67°F WB. Outdoor temperature: 95°F DB, 75°F WB.  
Nominal heating capacities are based on: Indoor temperature: 70°F DB, 60°F WB. Outdoor temperature: 47°F DB, 43°F WB.

Quietside maintains a policy of ongoing development, specifications are subject to change without notice. Refer to www.AHRIdirectory.org for current reference numbers.

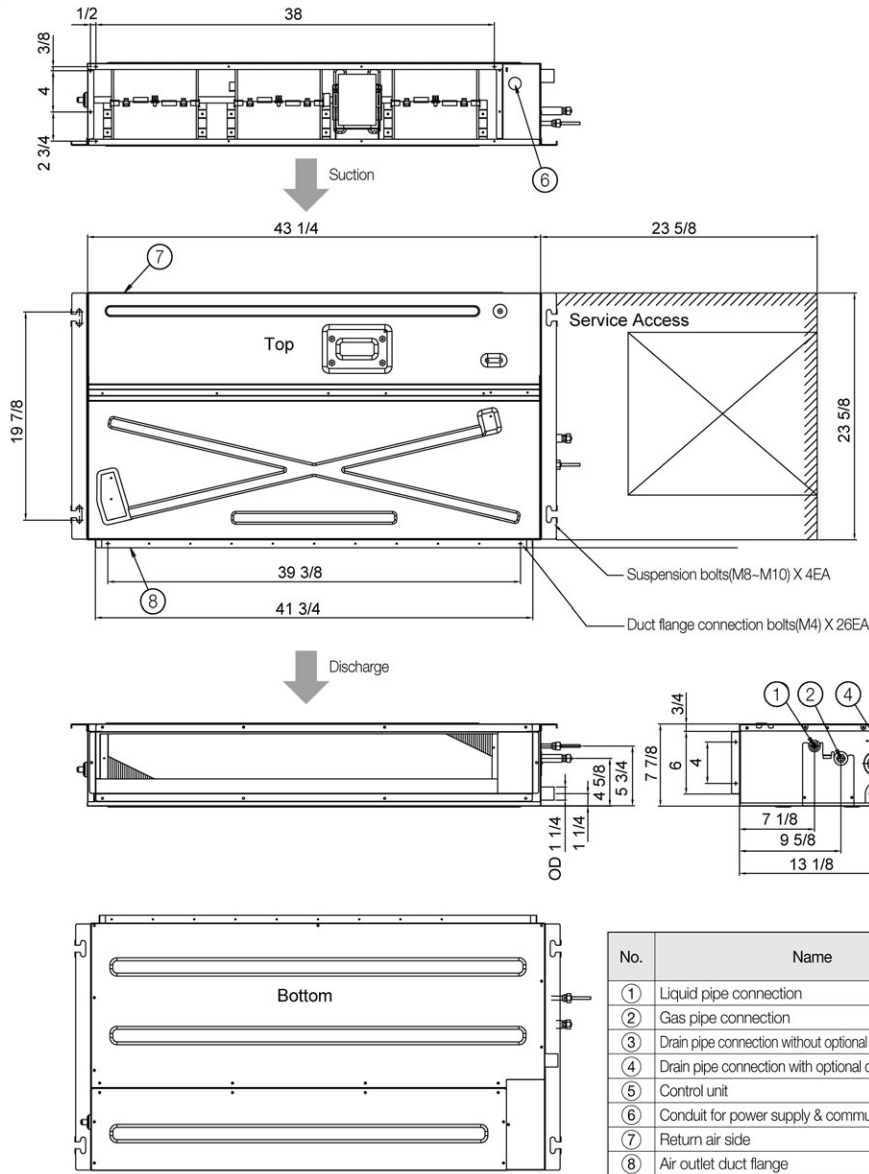




**SUBMITTAL EH052CAV / UH052CAV**  
Slim Duct, single zone split system

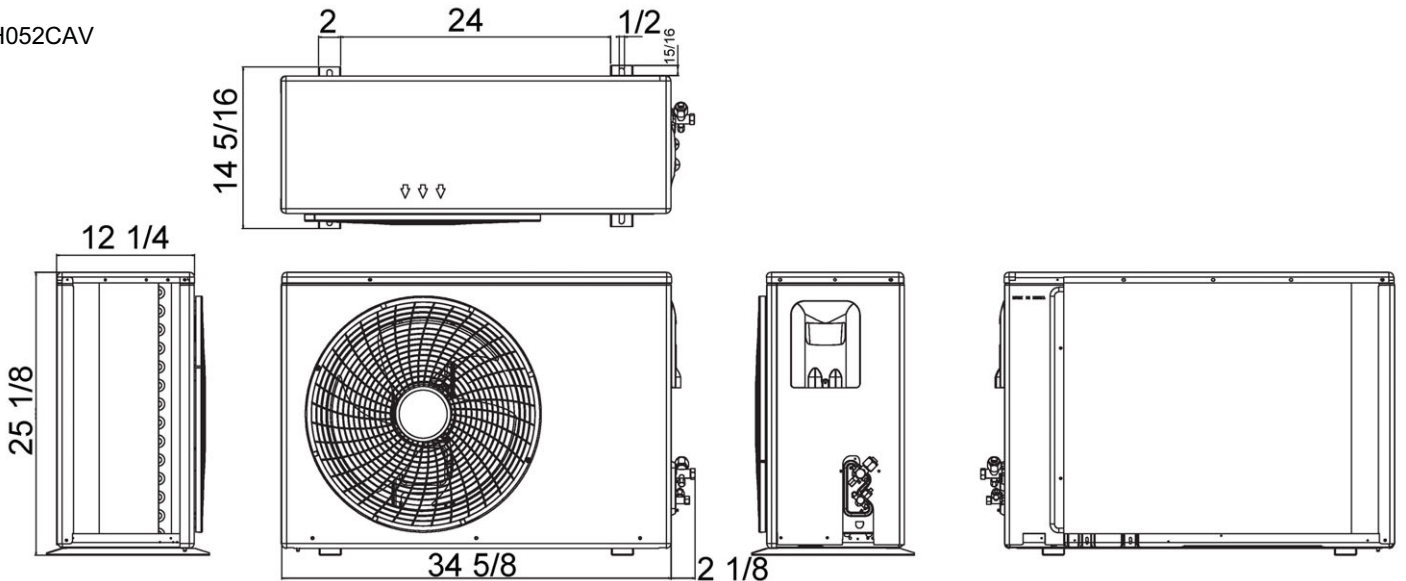
EH052CAV

Unit: Inches



No.	Name	Description
①	Liquid pipe connection	1/4" Flare
②	Gas pipe connection	1/2" Flare
③	Drain pipe connection without optional drain pump kits	VP25 (OD 3/2, ID 25) / VP25 (OD 1 1/4", ID 1")
④	Drain pipe connection with optional drain pump kits	Quick lock
⑤	Control unit	-
⑥	Conduit for power supply & communication wiring	-
⑦	Return air side	-
⑧	Air outlet duct flange	-

UH052CAV



Quietside maintains a policy of ongoing development, specifications are subject to change without notice.

888-699-6067

www.Quietside.com

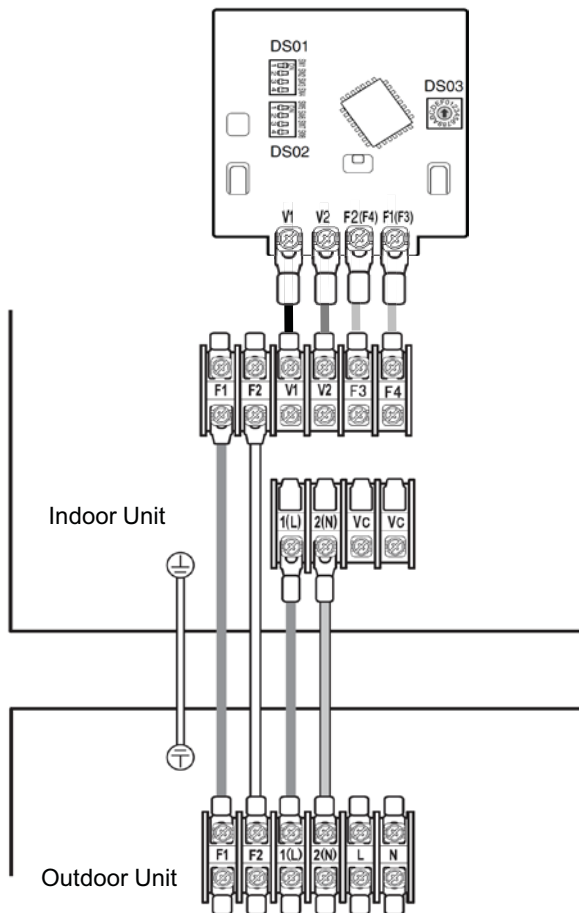


**Easy air handler control**

- Air handler operation ON/OFF
- Air handler operation mode, set temperature, air flow direction, fan speed
- Error display
- Filter replacement alarm display and reset
- Single indoor unit control or multiple unit control (maximum 16 units)
- Restriction on wireless control usage
- Heat mode skip option
- Indoor unit operation state display

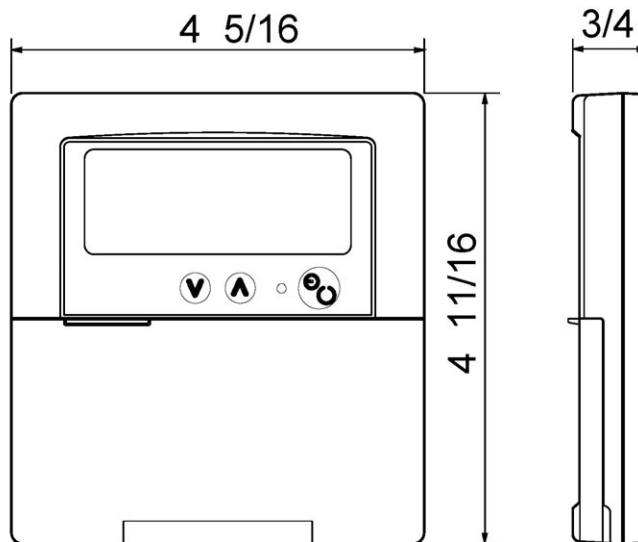


MWR-TH01



- DC 12V (V1/V2) power supplied by indoor unit
- RS485 communication (F3/F4)
- 16AWG shielded cable is necessary for proper operation

Unit: inches



Quietside maintains a policy of ongoing development, specifications are subject to change without notice.