

ComfortStar®

plus

2010

ductless split systems

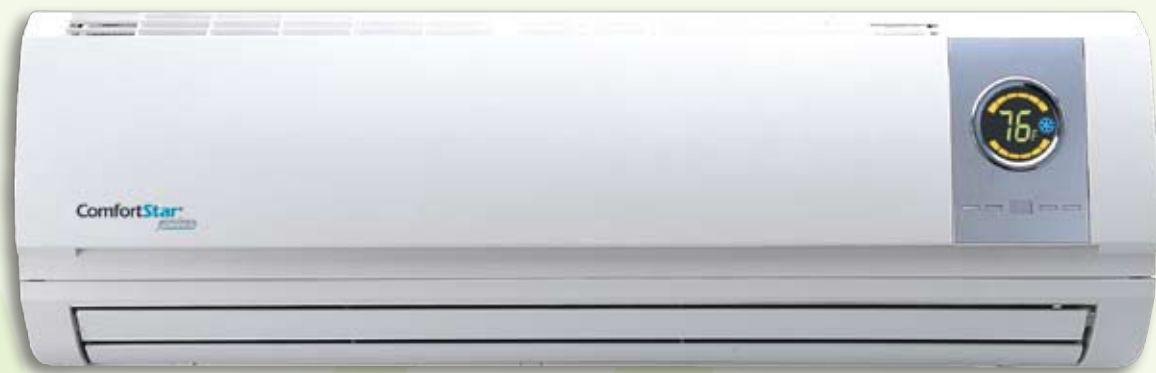


ENVIRONMENTALLY
FRIENDLY

R410A



THE
REAL TRUE
VALUE™
The Best For Less



COMFORTSTAR PLUS DUCTLESS SYSTEM BRINGS YOU:

COMFORT Single-zone or multi-zone comfort for residential and light commercial applications: Schools, nursing homes, apartments, computer and telephone rooms.

GREAT for remodeling older homes.

QUIETER than a window unit, Mini-splits are comprised of an indoor and an outdoor unit, which keeps noisy compressors and motors outdoors.

BURGLAR FREE Intruders cannot climb in through openings. The indoor unit is connected to the outdoor unit through a small 3 inch opening in the wall.

BEAUTIFUL It looks beautiful on the wall and includes the comfort of a remote control.

POWERFUL Inverter Technology helps the system reach it's temperature set point quicker.

SAVINGS More than a 60% increase in energy efficiency in comparison to the 10 SEER unit, therefore reducing your utility bill and increasing savings.

VALUE 16 SEER in full line including air conditioning, heat pump and multiple splits. This represents up to 23% above the Federal "13 SEER" efficiency mandate.

ENVIRONMENTALLY FRIENDLY reducing fossil fuel consumption and limiting air pollution. Units use environmentally friendly R410A refrigerant designed to prevent the depletion of the ozone layer.

HIGH EFFICIENCY The high efficiency compressor and coil, increases the unit size by only 3 inches from the 10 SEER units. Heat pump units use Inverter Technology to achieve even higher efficiency in the smaller sizes.

We care about our environment

Heat pump applications may not be suitable for all climates. Please consult installation manual.

featuring:

- 2 Summary of Benefits
- 4-5 Easy Installation & Gold Fin Protection
- 6-7 Product Information
- 8 ComfortStar Plus Standard Features
- 9 Comprehensive Remote Controller
- 10-11 CFS & CCH Mini-Splits / Cooling Units
- 12-13 CHH Mini-Splits / Heat Pumps
- 14-15 16 SEER Multi-Split: Dual, Tri & Quad-Zone System examples
- 16 Possible Combinations
- 17-19 Specifications & Performance Ratings

Our manufacturing facilities maintain the highest quality and reliability standards with ISO9001 and ISO14001. All our products are ARI and ETL certified. We provide solutions at a great value.

Our ductless system is simple, reliable and affordable. Across the world, we are committed to bringing daily comfort into every facet of your lives. Whether it is your home, your child's school, or your local grocery store, ComfortStar is there to ensure a pleasant environment, regardless of the climate.

IAQ INDOOR AIR QUALITY

- active carbon electrostatic fiber filter
- traps small dust particles
- smoke
- pet dander
- eliminates odors

INVERTER TECHNOLOGY

- Variable speed compressor provides precise temperature control for optimized comfort.
- Quickly reach the desired set point with high speed
- Maintain precise temperature with low speed
- Extends product life by eliminating on-off cycling
- Energy consumption depends on your need to reduce electricity cost





Indoor unit



Outdoor unit

Drain Line

Electrical Wires

Refrigerant lines

Installation is simple, only requires a 3" hole to run refrigerant lines and electrical wires between indoor and outdoor, no duct work required.

Ductless systems provide less than 5% cooling loss versus typical 40% loss through ducted systems.

environmentally friendly



COMFORTSTAR PLUS HAS GOLD FIN PROTECTION

Gold Fin Protection consists of two protective layers: an anti-corrosive coating and a waterproof membrane that prevents humidity. These ensure the durability of the equipment and maximizes energy efficiency.

easy installation:

- 1 MOUNT** indoor and outdoor units.
- 2 CONNECT** the refrigerant lines. Insulate both gas and liquid lines.
- 3 CONNECT** power to outdoor condenser only and then bring in the power from outdoor to indoor evaporator.





THE INVERTER CONTROLLED COMPRESSOR

operates by changing the frequency from 60Hz to a varying range (20Hz to 125 Hz). The inverter will control the compressor to modulate on a high frequency and rapidly reach desired temperature. When the desired temperature has been achieved, the inverter will control the compressor to run on a lower frequency to maintain precise temperature and consume less energy.

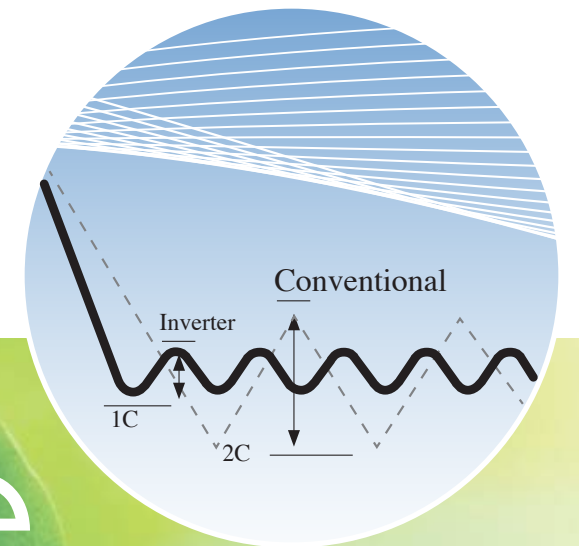
AT THE HEART OF COMFORTSTAR PLUS SERIES HEAT PUMP SYSTEM IS THE INNOVATIVE INVERTER TECHNOLOGY.



efficient energy use

WITH LOW-FREQUENCY OPERATION, THE SYSTEM **REDUCES ENERGY WASTE** AND PROVIDES THE BEST EFFICIENCY.

Inverter Controlled Compressor maintains **PRECISE CONTROL OF ROOM TEMPERATURE** and creates a more comfortable environment. In conventional ON/OFF compressors, the compressor turns OFF once the set temperature is reached, and turns back ON after the temperature rises. The time it takes for the unit to switch on and off causes the room temperature to greatly fluctuate. With the inverter Controlled Compressor, the power reduces once the desired temperature has been reached, but continues operating at a reduced state to maintain a stable room temperature with minimal fluctuation.



maximize 44% savings on your electric bill!

comfortstar plus standard features

- 1 ACTIVE CARBON ELECTROSTATIC FIBER FILTER** Electrostatic fiber filter traps small dust particles, smoke and pet dander to prevent allergies. Active carbon filter eliminates odors.
- 2 AUTO RESTART AND MEMORY FUNCTION** A power failure will not cause any setting to be lost, thus eliminating the need for re-programming.
- 3 HIGH EFFICIENCY** With a high efficiency compressor and the most optimized heat exchange system, the unit achieves higher efficiency and contributes to further energy savings.
- 4 GOLDEN FIN** Coated with anti corrosion golden layer on the coils to improve hydrophilic performance.
- 5 SWING FUNCTION** Allows the louver of the indoor unit to enhance the air distribution throughout the room.
- 6 24-HOUR TIMER** Allows the unit to start and stop as desired.
- 7 SLEEP FUNCTION** Adjusts the temperature while sleeping to make the room more comfortable.
- 8 3 SPEED CONTROL** Will change the fan speed to 3 different settings to accommodate your needs. Helps to control humidity levels when cooling may not be needed.
- 9 DRY MODE** Helps to control humidity levels when cooling may not be needed.
- 10 AUTO FAN MODE** The system starts in high fan speed and automatically adjusts downward as room reaches set temperatures.
- 11 ERROR INDICATING LIGHT** Allows you to identify the problems within the system quickly and accurately.
- 12 OVERLOAD PROTECTION** Internal overload protector ensures compressor is running safely.
- 13 ANTI-FREEZING PROTECTION** Pre-programmed control logic keeps coils from freezing.
- 14 LOW AMBIENT CONTROL** By installing a head pressure control (not supplied), the unit can operate down to zero degrees.

REMOTE CONTROLLER

COMFORTSTAR OFFERS A COMPREHENSIVE REMOTE CONTROLLER

that controls more than temperature and fan speed, it provides four modes: cool, heat, auto and dry, we also have a 24-hour ON/OFF timer, sleep and swing function. Our R410A multi-split units add:

- 1 "X-Fan"** button which blows out moisture from the indoor coil to prevent bacteria growing.
- 2 "Turbo"** button which allows the indoor fan motor to run at a super high speed, quickly cooling or heating the environment.



we care
about our
environment



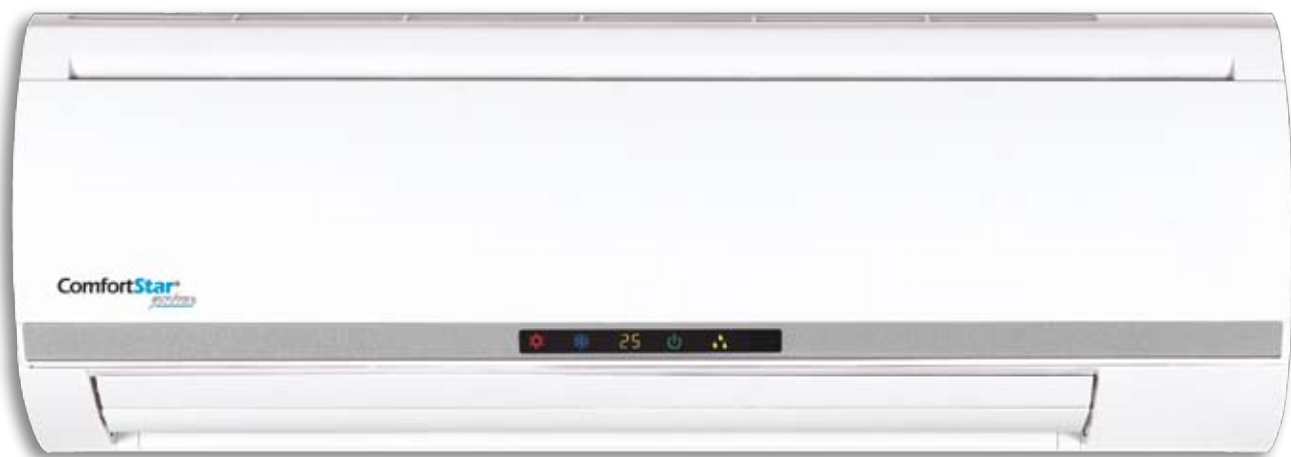
CFS mini-splits-16 SEER



INNOVATIVE INVERTER TECHNOLOGY

- Single-Zone, cooling only
- Individually controlled system perfect for residential or light commercial applications
- Duct free for easy installation
- Environmental friendly R410A to prevent depletion of the ozone layer
- Gold Fin protection for anti-corrosion
- Active carbon electrostatic fiber filter to improve the indoor air quality
- Swing function allow you to adjust the direction of air flow
- 24-hour timer let you to set up the on/off time
- Auto restart let unit keep the previous setting during power failure
- Sleep mode creates more comfortable environment throughout the night
- Large LED display
- Error code display for easy troubleshooting

CCH mini-splits-13 SEER



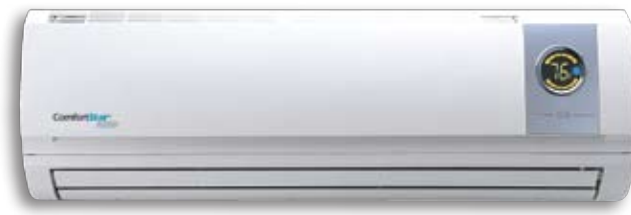
SINGLE ZONE mini-split cooling only specifications

MODEL		CFS009CA-410	CFS009CD-410	CFS012CA-410	CFS012CD-410	CFS018CD-410	CCH024CD-410
Application		Air Conditioning	Air Conditioning	Air Conditioning	Air Conditioning	Air Conditioning	Air Conditioning
Power supply		1/115V/60Hz	1/208V 230V/60Hz	1/115V/60Hz	1/208-230V ~/60Hz	1/208-230V/60Hz	1/208-230V/60Hz
Cooling Capacity	Btu/h	9000	9000	12000	12000	18000	22000
SEER		16	16	16	16	16	13
Refrigerant/charge	lb	R410A / 2.4	R410A / 2.4	R410A / 3.0	R410A / 2.6	R410A / 3.1	R410A / 5.1
Rated current A		10.5	5.5	12.5	6.5	11	10.4
Compressor Type		DC Inverter	DC Inverter	DC Inverter	DC Inverter	DC Inverter	Rotary
Compressor Brand		Mitsubishi	Mitsubishi	Mitsubishi	Mitsubishi	Sanyo	Hitachi
LRA of compressor	A	33	33	33	33	41	48
Air Flowrate	CFM	320	320	400	400	500	640
Sound Level (H/M/L)	dB (A)	43 /40 / 38	43 / 40 / 38	43 / 40 / 38	43 / 40 / 38	46/42/39	52/50/48
INDOOR UNIT							
Fan type		Axial-flow	Axial-flow	Axial-flow	Axial-flow	Axial-flow	Axial-flow
Fan speed	RPM	1300	1300	1300	1300	1300	1300
Fan motor output	W	14	14	20	22	20	45
OUTDOOR UNIT							
Fan type		Cross-flow	Cross-flow	Cross-flow	Cross-flow	Axial-flow	Axial-flow
Fan speed	RPM	850	850	850	850	780	815
Fan motor output	W	30	30	30	30	60	60
Suitable Area	Sq. Ft	150-300	150-300	200-400	200-400	300-600	400-800
Max. length of line run	Ft	50	50	60	60	100	50
Max. elevation between indoor and outdoor	Ft	30	30	30	30	30	30
Power Wire Gauge		3X AWG 12*	3X AWG 12*	3X AWG 12*	3X AWG 12*	3X AWG 12*	3X AWG 12*
Communication Wire Gauge		4X AWG 18*	4X AWG 18*	4X AWG 18*	4X AWG 18*	4X AWG 18*	4X AWG 18*
Weight of indoor unit	Net Weight (Lb)	19	19	24	24	29	39
Weight of outdoor unit	Net Weight (Lb)	88	88	88	88	129	138
Line set	gas	1/2"	1/2"	1/2"	1/2"	5/8"	5/8"
	liquid	1/4"	1/4"	1/4"	1/4"	3/8"	3/8"
Body dimension (mm)	indoor	30.31x9.81x7.5	30.31x9.81x7.5	32.67x11.22x8.88	32.67x11.22x8.88	40.15x12.2x8.94	46.4x12.8x9.0
	outdoor	33.38x21.27x12.6	33.38x21.27x12.6	33.38x21.27x12.6	33.38x21.27x12.6	37.4x26.9x13.4	40.1x33.1x16.2

* All Wires carry line voltage, the wire gauge on this table is factory minimum recommended size, always refer to the local code for proper wire size

CHH mini-splits

single zone - inverter technology
heat pump unit specifications



MODEL		CHH009CA-13B	CHH012CA-13B	CHH012CD-13B	CHH018CD-13B	CHH024CD-13B
FEATURE		Heat Pump	Heat Pump	Heat Pump	Heat pump	Heat pump
Power supply		115/1/60	115/1/60	230/1/60	230/1/60	230/1/60
Rated cooling capacity	Btu/h	9000	12000	12000	18000	21000
Rated heating capacity at 47°F	Btu/h	11500	12500	12500	21000	24000
Rated heating capacity at 17°F	Btu/h	4800	7000	7000	10000	13800
SEER FOR COOLING		16	16	16	16	16
HSPF for heating		8	7.7	7.7	8.0	8.0
Refrigerant/charge	Ounce	R410A/42	R410A/44	R410A/44	R410A/59	R410A/85
Rated current A	Cooling	6.4	10	5	11	14
	Heating	7	10.45	5.45	11	14.2
LRA of compressor	A	33	33	33	41	32
Air circulation	CFM	325	325	355	460	570
Noise level		40	43	43	46	47
INDOOR UNIT						
Fan type		Cross flow fan	Cross flow fan	Cross flow fan	Cross flow fan	Cross flow fan
Fan speed	RPM	1200/1060/860	1350/1200/1100	1250/1100/1050	1430 / 1250 / 1100	1400 / 1200 / 1100
Fan motor output	W	14	20	20	20	45
OUTDOOR UNIT						
Fan type		Axial fan	Axial fan	Axial fan	Axial fan	Axial fan
Fan speed	RPM	830	830	830	780/620	780/620
Fan motor output	W	30	30	30	60	60
Compressor type		D C Inverter	DC Inverter	DC Inverter	DC Inverter	DC Inverter
OTHER						
Filter		Active Carbon	Active Carbon	Active Carbon	Active Carbon	Active Carbon
24 hours timer		YES	YES	YES	YES	YES
Auto restart		YES	YES	YES	YES	YES
3 speed control		YES	YES	YES	YES	YES
Auto swing louver		YES	YES	YES	YES	YES
Suitable Area	Sq. Ft	150-300	200-400	200-400	300-600	400-800
Power Wire Gauge		12-3*	12-3*	12-3*	12-3*	12-3*
Communication Wire Gauge		18-4*	18-4*	18-4*	18-4*	18-4*
Weight of indoor unit		18.7	24.3	24.3	28.7	28.7
Weight of outdoor unit		88	88	88	130	149
Line set	gas	1/2"	1/2"	1/2"	5/8"	5/8"
	liquid	1/4"	1/4"	1/4"	3/8"	3/8"
Body Dimensions (inches)	indoor	30.31 x 9.81 x 7.5	32.67 x 11.22 x 8.88	32.67 x 11.22 x 8.88	40.15 x 12.2 x 8.94	40.5 x 12.2 x 8.94
	outdoor	33.38 x 21.27 x 12.6	33.38 x 21.27 x 12.6	33.38 x 21.27 x 12.6	40.25 x 26.93 x 16.56	39.88 x 33.07 x 16.56

* All wires carry line voltage, the wire gauge on this table is factory minimum recommended size; always refer to the local code for proper wire size



CHH mini-splits

2.5 tons single zone
16 SEER heat pump

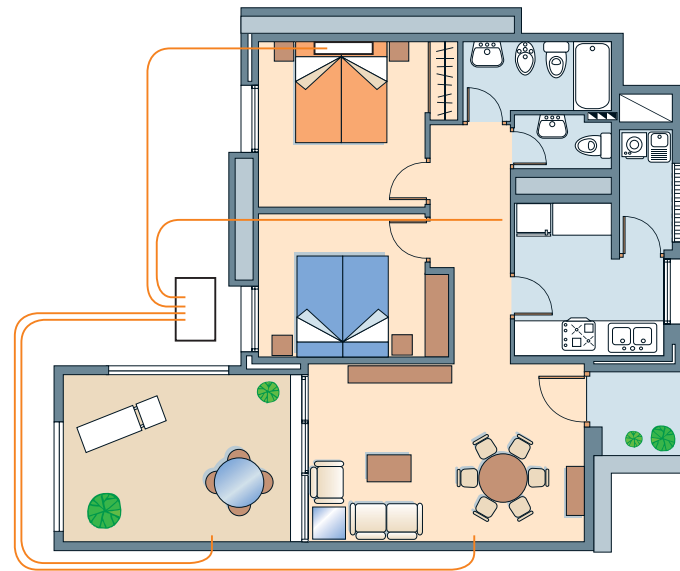
- Auto Changeover
- Auto Restart
- Sleep Mode
- Adjustable fan speed
- Swing Function (horizontal & vertical)
- 24-hour timer
- LED display
- Error code for troubleshooting
- Active carbon electrostatic filter
- Dry Mode
- Golden fin



MODEL	CHH030CD-410	
Application	Heat Pump	
Power supply	1/208-230V/60 Hz	
Rated cooling capacity	Btu/h	28000
Rated heating capacity at 47oF	Btu/h	28000
Rated heating capacity at 17oF	Btu/h	17000
SEER FOR COOLING	16	
HSPF FOR HEATING	8.2	
Refrigerant/charge	Lb	R410a 5.7
Rated current A	A	17.17
Compressor Type	DC inverter	
Compressor Brand	Mitsubishi	
LRA of compressor	A	45
Air Florate	CFM	800
Sound Level dB (A) (H/M/L)	52/50/48	
Indoor unit		
Fan type	Cross-flow	
Fan speed	RPM	1400/1300/1200
Fan motor output	W	40
outdoor unit		
Fan type	Axial-flow	
Fan speed	RPM	830
Fan motor output	W	90
Other		
Suitable Area	Sq. Ft	500-1000
Max. length of line run	Ft	100
Max. elevation between indoor and outdoor	Ft	30
Power Wire Gauge	3X AWG 10*	
Communication Wire Gauge	4XAWG16*	
Weight of indoor unit	Net Weight(LB)	44
Weight of outdoor unit	Net Weight (LB)	154
Line set	gas	5/8"
	liquid	1/4"
Body dimension (mm)	indoor	53.15x12.83x10
	outdoor	38.58x31.1x16.8

* All Wires carry line voltage, the wire gauge on this table is factory minimum recommended size, always refer to the local code for proper wire size

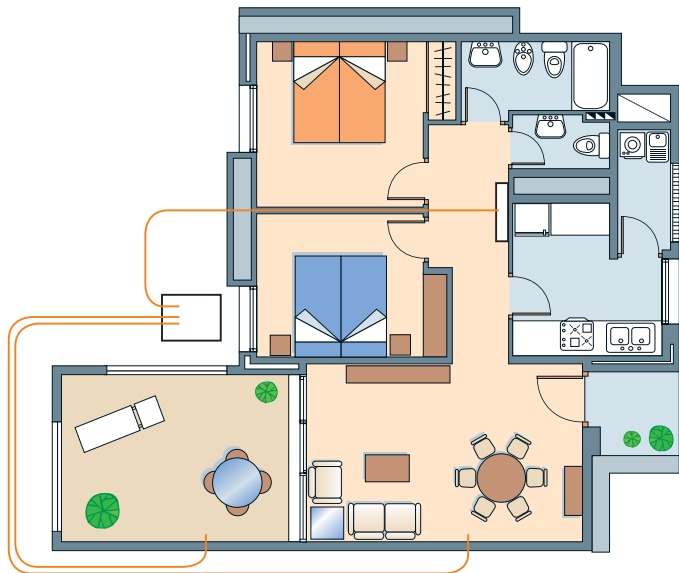
comfortstar plus multi-split is perfect for residential and light commercial application



EXAMPLE OF A QUAD-ZONE COMBINATION, 9K+9K+9K+12K
one of 19 possible combinations for your home or office.

4

R410

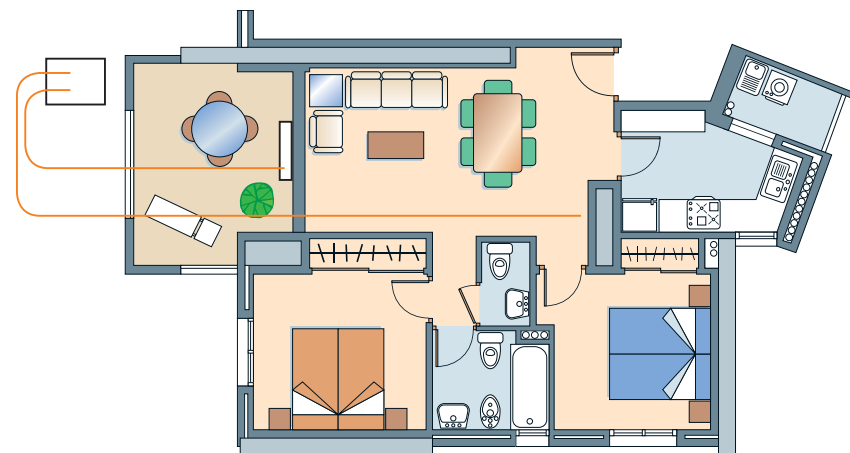


EXAMPLE OF A TRI-ZONE COMBINATION, 9K+9K+12K
one of 19 possible combinations for your home or office.

3

2

EXAMPLE OF A DUAL-ZONE COMBINATION, 12K+12K
one of 19 possible combinations for your home or office.



THERE ARE 4 TYPES OF OUTDOOR UNITS AND 3 TYPES OF INDOOR UNITS CREATING 19 DIFFERENT COMBINATIONS.

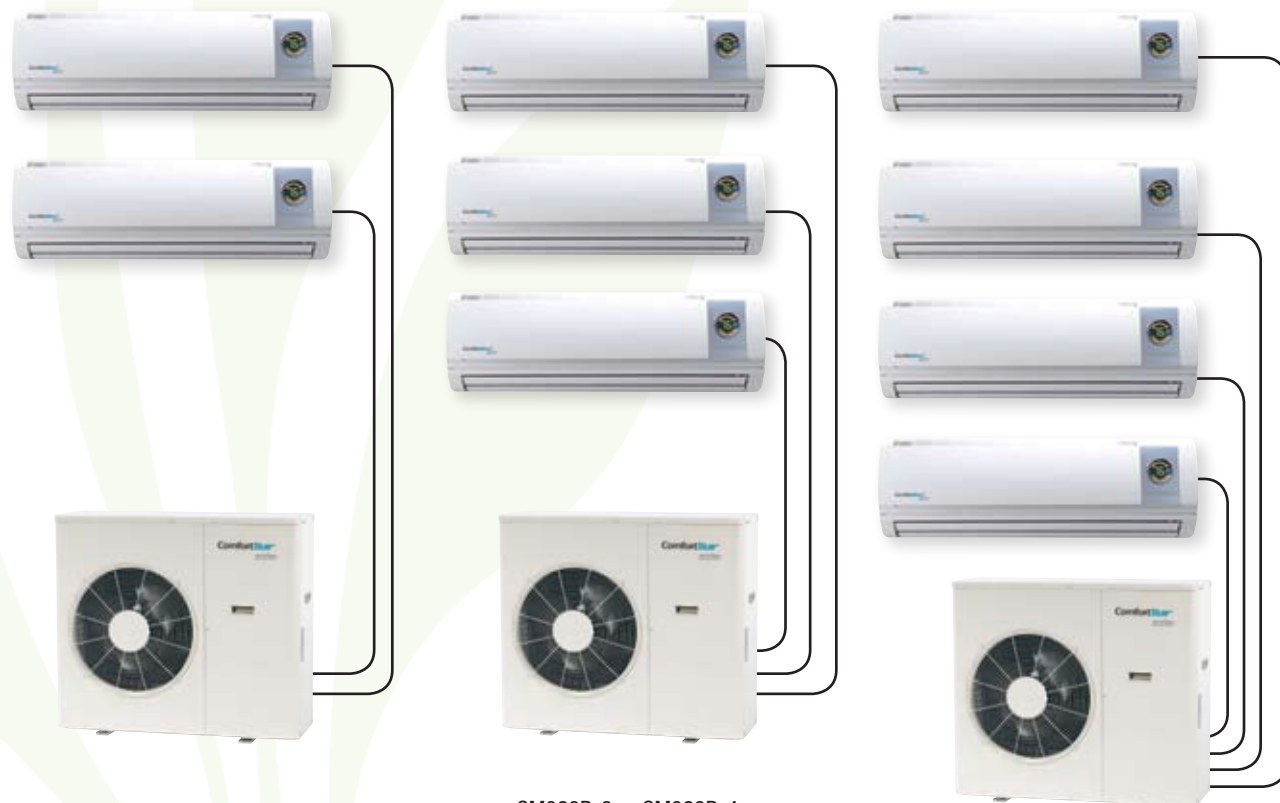
- Flexi-multi design: let installer mix and match evaporators and condensers for different sized spaces
- High efficiency: with an inverter controlled compressor, the system runs at an efficiency up to 16 SEER
- Individually controlled for each zone allows you to save more
- Duct free for easy installation
- Precise temperature control creates a more comfortable zone
- Environmentally friendly R410A prevents depletion of the ozone layer
- Gold Fin protection for anti-corrosion
- Active carbon electrostatic fiber filter to improve the indoor air quality
- Turbo fan speed for cooling or heating quickly
- Indoor fan delay keeps the indoor coil dry to prevent bacteria growing
- Auto swing allows you to adjust the direction of air flow
- 24-hour timer lets you set up the ON/OFF time
- Auto restart lets unit keep the previous setting even during a power failure
- Sleep mode creates a more comfortable environment during the night
- Auto changeover between heating and cooling mode
- Large LED display
- Error code display for easy troubleshooting



possible R410 combinations

Individually controlled flex multi-split: choose the capacity you need for each room, you can choose up to 4 indoor units to match with just one outdoor unit. Individual controls allow you to reduce the electricity cost by turning off the air conditioning in an unoccupied area. Duct-free indoor evaporator allows you to install the system quickly and easily without expensive duct work and wiring.

9K+9K	9K+9K+9K	9K+9K+9K+9K
9K+12K	9K+9K+12K	9K+9K+9K+12K
12K+12K	9K+12K+12K	9K+9K+12K+12K
9K+18K	12K+12K+12K	9K+12K+12K+12K
12K+18K	9K+9K+18K	9K+9K+9K+18K
	9K+12K+18K	9K+9K+12K+18K
	12K+12K+18K	9K+12K+12K+18K



CM018B, CM024B, CM028B-3 or CM028B-4: check pages 17-19 for details

CM028B-3 or CM028B-4: check pages 17-19 for details

CM028B-4: check pages 17-19 for details

SPECIFICATIONS FOR OUTDOOR CONDENSER

Inverter technology changes the compressor speed according to the cooling and heating load of the room. Therefore, the system cooling or heating your room quickly maintains the desired room temperature more precisely.

OUTDOOR MODELS		CM018B	CM024B	CM028B-3	CM028B-4
Power supply		1PH 208-230V~60Hz			
Cooling capacity (BTU)	max	21000	28000	34000	34000
	nom	17500	24000	27000	27000
	min	7200	10000	10000	10000
SEER		16	16	16	16
Heating capacity* (BTU)	max	22000	33000	37000	37000
	nom	19000	25000	28000	28000
	min	6500	9000	9000	9000
HSPF		8.2	8.2	8.2	8.2
Liquid Pipe		1/4"	1/4"	1/4"	1/4"
Gas Pipe		3/8"	1/2"	3/8"	3/8"
				1/2"	1/2"
Compressor Type		DC Inverter	DC Inverte	DC Inverte	DC Inverte
Compressor L.R.A. (A)		41	34	34	34
Compressor RLA(A)		8.96	8.2	8.2	8.2
Fan Motor Speed (rpm) (H/M/L)		780/-/600	780/-/600	840/740/640	840/740/640
Fan Motor RLA(A)		0.65	0.65	0.68	0.68
Sound Pressure Level dB (A) (H/L)		56/54	59/58	60/54	60/54
Dimension (W/H/D) (In)		33.3 x 27.0 x 11.8	37.4 x 33.0 x 16.5	37.4 x 33.0 x 16.5	37.4 x 33.0 x 16.5
Net Weight (LB)		114	149	165	165
Refrigerant		R410A	R410a	R410a	R410a

INDOOR MODELS	CMI09B	CMI12B	CMI18B
Fan Motor Speed (RPM) (SH/H/M/L)	1150/1050/900/750	1250/1050/950/800	1350/1200/1050/900
Power Output of Fan Motor (W)	14	20	20
Fan Motor Capacitor (uF)	1	1	1
Fan Motor RLA(A)	0.17	0.21	0.28
Sound Pressure Level dB (A) (SH/H/M/L)	38/34/31/28	40/34/32/30	46/43/40/36
Dimension (W/H/D) (In)	30.3 x 9.8 x 7.5	32.7 x 11.2 x 7.9	40.2 x 12.2 x 9.0
Net Weight (LB)	19	24	28

performance rating

CM018B		Cooling Capacity (BTU)				Heating Capacity (BTU)			
Indoor units	Room	Room	Room	Room	Room	Room	Room	Room	
Combination	A	B	C	D	A	B	C	D	
9k+9k	9,000	9,000			9,500	9,500			
9k+12k	9,000	12,000			9,500	12,500			

CM024B		Cooling Capacity (BTU)				Heating Capacity (BTU)			
Indoor units	Room	Room	Room	Room	Room	Room	Room	Room	
Combination	A	B	C	D	A	B	C	D	
12K+12K	12,000	12,000			14,700	14,700			

CM028B-3		Cooling Capacity (BTU)				Heating Capacity (BTU)			
Indoor units	Room	Room	Room	Room	Room	Room	Room	Room	
match	A	B	C	D	A	B	C	D	
9+9	8,525	8,525			10,912	10,912			
9+12	8,525	11,935			10,912	13,640			
12+12	11,935	11,935			13,299	13,299			
9+18	8,866	15,345			9,889	17,050			
12+18	11,935	12,276			12,276	15,345			
9+9+9	9,091	9,091	9,091		10,002	10,002	10,002		
9+9+12	8,184	8,184	10,912		9,378	9,378	11,253		
9+12+12	7,502	9,889	9,889		8,184	11,253	11,253		
12+12+12	9,091	9,091	9,091		10,230	10,230	10,230		
9+9+18	8,525	8,525	10,230		8,355	8,355	13,981		
9+12+18	7,843	9,207	10,230		7,843	9,548	13,299		
12+12+18	8,866	8,866	9,548		8,866	8,866	12,958		



PERFORMANCE RATING

CM028B-4		Cooling Capacity (BTU)				Heating Capacity (BTU)			
Indoor units	Room	Room	Room	Room	Room	Room	Room	Room	
match	A	B	C	D	A	B	C	D	
9+9	8,525	8,525			10,912	10,912			
9+12	8,525	11,935			10,912	13,640			
12+12	11,935	11,935			13,299	13,299			
9+18	8,866	15,345			9,889	17,050			
12+18	11,935	12,276			12,276	15,345			
9+9+9	9,091	9,091	9,091		10,002	10,002	10,002		
9+9+12	8,184	8,184	10,912		9,378	9,378	11,253		
9+12+12	7,502	9,889	9,889		8,184	11,253	11,253		
12+12+12	9,091	9,091	9,091		10,230	10,230	10,230		
9+9+18	8,525	8,525	10,230		8,355	8,355	13,981		
9+12+18	7,843	9,207	10,230		7,843	9,548	13,299		
12+12+18	8,866	8,866	9,548		8,866	8,866	12,958		
9+9+9+9	6,820	6,820	6,820	6,820	8,184	8,184	8,184	8,184	
9+9+9+12	5,968	5,968	5,968	9,378	7,502	7,502	7,502	10,230	
9+9+12+12	5,115	5,115	8,525	8,525	7,161	7,161	9,207	9,207	
9+12+12+12	5,797	7,161	7,161	7,161	6,138	8,866	8,866	8,866	
9+9+9+18	6,138	6,138	6,138	8,866	7,161	7,161	7,161	11,253	
9+9+12+18	5,115	5,115	7,843	9,207	6,479	6,479	8,525	11,253	
9+12+12+18	5,115	6,479	6,479	9,207	6,479	7,502	7,502	11,253	

refrigerant charge instruction

MODEL		CM018B		CM024B		CM028B-3			CM028B-4			
Liquid valve	In	1/4	1/4	1/4	1/4	1/4	1/4	1/4	1/4	1/4	1/4	1/4
Gas valve	In	3/8	3/8	1/2	1/2	3/8	3/8	3/8	3/8	3/8	3/8	3/8
		Change 3/8 to 1/2 with tube adaptor (Included) when connect 12K or 18K indoor units										
Max. length of line run (total)	ft	60		60		210			210			
Max. elevation between indoor and outdoor	ft	16		16		30			30			
Refrigerant type		R410A										
Length of pre-charge	ft	16	16	16	16	100 (total)			100 (total)			
Additional Refrigerant charge for each additional feet	Oz	0.7										

ComfortStar®

plus



Our state of the art facility has an advanced distribution warehouse management system with radio frequency equipment that ensures error-free shipping. We guarantee same day shipping on orders received before 1 p.m. EDT. Our extensive inventory levels allow us to achieve an average fill rate of 95%. We carry a vast selection of spare parts in stock, ready to ship. Custom bar-coding or any other special requirements can be met as needed.

WARRANTY:
5 YEARS COMPRESSOR
1 YEAR PARTS

COMFORTSTAR®

12201 N.W. 107TH AVE.

MEDLEY, FLA 33178

toll free: 1-866-524-9898

fax: 305-500-9896

e-mail: info@comfortstarusa.com

web: www.comfortstarusa.com

CERTIFICATIONS:



We are Proud Sponsors of
Casa Amor
Mending Hearts, One Child at a Time
www.casaamorvillages.org

All rights reserved printed in the United States of America.
This publication is protected by copyright, and permission must be obtained by eAir, LLC prior to any reproduction or transmission in any form or by any means.
Trademarks: ComfortStar logo is a registered brand of eAir, LLC

